

2023
GIBSON COUNTY FAIR
OPEN CLASS EXHIBITS



BUILDING HOURS:
Sunday, July 9—Friday 14, 2023
12:00 noon until 9:00 p.m.

Open to the Public

Sponsored by:
Gibson County
Extension Homemakers

The Gibson County Extension Homemakers
Present.....

BOUNTIFUL BASKETS SILENT AUCTION

Baskets will be on display daily in the Activities Building
at the Gibson County Fairgrounds until 9:00 P.M. on
Thursday, July 13, 2023

Persons may enter a bid on bid slips provided.

Bid slips will be checked throughout the day with highest
bids posted periodically.

Bid daily to be sure you are the winner!!

Winners will be notified Friday, July 14, 2023
Baskets should be picked up and paid for by
11:00 a.m. on Saturday, July 15.

**All proceeds will go to the Gibson
County Extension Homemakers
Scholarship Fund.**

If you or your organization would like to donate a basket,
please call the Gibson County Extension Office, 812-385-3491.
We encourage all baskets to be valued at \$40 or less. Total
price of basket and items must be listed on basket along with
all items included in basket.

Superintendents & Assistants

Emma Ault
Joe Padgett
Barbara Young
Peg Hall
June Neyhouse
Susan Franklin
Kyle Ellis
Marilyn Young
Becky Richeson
Judy Dossett
Mary Memmer
Patty Wildt
Martha Dever
Sharon Richeson

RULES – GIBSON COUNTY FAIR

Open Class exhibits will be entered Saturday, July 8, 8—11. Judging begins at 12:30. Foods can be picked up between 3-4 pm.

Bring address labels for quick entry!

All exhibits to be picked up from 8-11 am Saturday, July 15.

Exhibits not picked up by this time will forfeit premiums and will need to be picked up at Extension Office during office hours.

1. **Anyone is eligible to exhibit.** Entries will be accepted from anyone, regardless of county of residence or age.
2. Entry fee: \$6 for the first five entries
\$10 for six or more exhibits
Children's Art Exhibits (Ages 10 and under): \$3 entry fee)
3. An exhibit number and receipt will be given to each exhibitor. Exhibitors will proceed to Department Superintendents to register exhibits.
4. All exhibits must be made or grown by the exhibitor.
5. No entries will be accepted that have previously taken first prize.

6. Exhibitors are limited to ONE entry per class, but may exhibit in multiple classes and departments. It is the exhibitors' responsibility to enter in the correct class. If there is no class listed the exhibit will not be accepted. Department Superintendent has the final decision.
7. Every precaution will be taken to insure the safety of items entered, but management is not responsible for the loss or damage of any exhibit. Exhibits are subject to handling by public.
8. Placings of 1st through 5th may be awarded. Placings of 1st, 2nd and 3rd will receive premium money.
9. Best of Show ribbons will be given in each Department.
10. All articles should be ready for display. Any exhibit requiring mounting must be mounted at home.
11. Exhibits must be clean. Soiled items are disqualified.
12. The judges will be instructed not to award a 1st placing if an item is not worthy of merit. If no competition exists and article is not 1st premium merit, the article may be awarded a 2nd or 3rd placing.
13. All exhibits will be entered strictly according to classes listed in the Open Class Exhibit List. Any exhibit entered that does not qualify in a specific class will be entered in the unclassified class. Unclassified exhibits cannot be eligible for exhibit in any other class.
14. Identification is not allowed on the front of any exhibit. Any visible identification will be covered during judging.
15. Department has right to dispose of deteriorating perishable exhibits.

Judges will be required to submit a scorecard with comments for each project. This will help you to improve or make changes for next year's Open Class!

CRAFTS

Superintendent – Barbara Young

Premium: \$3.00 \$2.00 \$1.00

- Exhibits must be clean.

Classes:

1. Ceramic
2. Plaque, any material
(solid back)
3. Doily Craft
4. Tole Painting
5. Holiday Ornament
6. Decorative Wreath
7. Unclassified Wall Hanging
8. Basket Weaving
9. Recycled Material
(list items used)
10. Stuffed Toys
11. Scrapbooking
(exhibit page only)
 - 11.A. Birthday
 - 11.B. Sports
 - 11.C. Wedding
 - 11.d. Babies
 - 11.e. Animals
12. Stenciling
13. Appliqué – Clothing
14. Fabric Painting – Clothing
15. Unclassified Clothing Art
16. Paper Ribbon Art (creative twist)
17. Jewelry
18. Hair Bows
19. Dolls
20. Collections - at least 5 no more than 10
21. Silk Flower arrangements
 21. A. Miniature arrangement
 21. B. Centerpiece
 21. C. Holiday arrangement
 21. D. Exhibitors choice
22. No Sew Lap Robe/Blanket
23. Hand Painted Article
24. Unclassified

Fine ART

Superintendent - Terri Franz

Assistant—Pat Douglas

Premium: \$3.00 \$2.00 \$1.00

- Artwork must be framed and ready to hang with eye hook and picture wire.
- No sawtooth hangers or cardboard hangers
- No wet paint
- All artwork should be done within the last two years by artist/exhibitor
- Exhibits are restricted to 36x40 inches

-
Classes:

1. Oil
2. Watercolor (opaque or transparent, when an acrylic is framed with glass it is considered a watercolor)
3. Acrylic
4. Mixed Media (The separate media must be apparent in the painting, not the foundation only)
5. Ink – Black or Colored
6. Pencil – Black or Colored
7. Pastel – Chalk or Charcoal
8. Specified

Children's Art Exhibit

Premium: \$1.00 \$.75 \$.50

Classes:

9. Crayons or markers or pastel chalk
10. Paints, oil or acrylic or watercolor
11. Pencil, black or colored or charcoal
12. Miscellaneous-anything that doesn't fit above

NO PAINT BY NUMBER

FLOWERS

Superintendent – Kyle Ellis

Assistant—Andrea Devoy

Green Thumb Garden Club

Premiums: \$3.00 \$2.00 \$1.00

1. All flowers must be exhibited in clear glass jar or bottle. **No vases!** The container will not be judged. *Exception large sunflowers Jar size should be appropriate to flower exhibit size—use small mouth jar when appropriate.
2. Hybrid roses should be shown one-third to one-half open.
3. Daylilies should have 10-12 in. stems.
4. Potted plants must be grown by the exhibitor for at least six weeks.
5. Potted plants should be in round pots no larger than 12 in. in diameter. Square or rectangle pots should be in pots no longer than 12 in. in length.
6. When possible exhibits may be wedged with extra material in order to present the exhibit better for judging).
7. No foliage in water. No leaves in water.

Classes:

1. Any herb cut single spray
2. Potted herb-single variety
3. daylilies - 6-12 in. stems. No more than 12 in.
4. Potted Blooming Plant-single variety
5. Potted Blooming plant-3 varieties
6. Potted Green Non-Blooming plant
7. African Violets
8. Dahlia – 1 bloom
9. Dahlia –3 stems/mixed colors
10. Gladiolus – 1 spike
11. Gladiola – 3 spikes, mixed color
12. Marigolds – large type, 1 bloom
13. Marigolds – small type, 1 bloom
14. Marigolds-small type, 3 stems/mixed colors
15. Roses, 3 hybrid tea blooms

FLOWERS (continued)

16. Rose, floribunda or polyantha, 1 spray
17. Zinnias – 1 bloom (over 3 in. diameter)
18. Zinnias – 3 mixed colors (over 3 in. diameter blooms) 3 stems
19. Zinnias – 1 bloom (under 3 in. diameter)
20. Zinnias – 3 mixed colors (under 3 in. diameter blooms) 3 stems
21. Petunias – single, 1 stem
22. Petunias – single, 3 stems/mixed colors
23. Petunias – double, 1 stem
24. Daylilies – single, 1 stem under 3" diameter
25. Daylilies—single, 1 stem over 3" diameter
26. Daylilies – double, 1 stem under 3" diameter
27. Daylilies—double, 1 stem over 3" diameter
28. Daylilies – single, 3 stems/mixed color under 3" diameter blooms
29. Daylilies—single, 3 stems/mixed color over 3" diameter blooms
30. Daisy – 1 stem
31. Sunflowers – large, one bloom on paper plate over 4 in.
32. Sunflowers – small, one bloom under 4 in.
33. Asiatic Lily – one stalk
34. Hydrangea – one bloom
35. Black Eyed Susan – one bloom
36. Tiger Lily – One stalk
37. Calla Lily-one stalk/one stem
38. Hosta: 1 leaf under 3 in. diameter solid color
39. Hosta: 1 leaf, variegated under 3 in. diameter
40. Hosta: 1 leaf over 3 in. wide and under 6 in. wide solid color
41. Hosta: 1 leaf, variegated over 3 in. wide and under 6 in. wide
42. Hosta: 1 leaf over 6 in. wide solid color
43. Hosta: 1 leaf, variegated over 6 in. wide
44. Cone flower-1 stem

FLOWER ARRANGING

Superintendent – Jodi Meyer
Assistants— Kyle Ellis & Andrea Devoy

Premiums: \$3.00 \$2.00 \$1.00

- Accessories may be added to compliment the arrangement.
- All arrangements will be judged using the following scoring system:
Design, Distinction & Originality, Color Combination, Relation to Container,
Suitability of Combination of Material Condition

Classes:

Fresh Flower Arrangement (Fresh Flowers Only in Classes 1-13)

1. Miniature Arrangement – not to exceed 6" in height
(includes container and flowers).
2. Roadside Arrangement – fresh foliage and flowers gathered
along the roadside
3. It Suits Me – choice of the exhibitor
4. Centerpiece for the dining room table
5. Holiday Arrangement – any holiday
6. Candle Magic – candle must be included in arrangement
7. All zinnias arrangement
8. All marigold arrangement
9. All one color
10. Arrangement—featuring Gladiolas (other flowers may
be used)
11. Arrangement—featuring Vegetables (other flowers may be
used)
12. Arrangement—featuring Fruits (other flowers may be used)
13. Arbor Day Salute-use your choice of tree material in fresh arrangement
(may add flowers of your choice)

Dried Flower Arrangement (Dried Flowers Only in Classes 13-17)

14. Miniature Arrangement- not to exceed 6" in height (includes
container and flowers)
15. It Suits Me – choice of the exhibitor
16. Holiday Arrangement – any holiday
17. Centerpiece—for dining room table
18. Door decoration

FOOD PRESERVATION

Superintendent – Susan Franklin
Assistant—Sharon Richeson

Premium: \$3.00 \$2.00 \$1.00

- Use brand name canning jars and lids with rings. Leave the ring on the jar. No baggies.
- All canned exhibits subject to opening by the judge.
- **Entries MUST be labeled with product name, month/year of preparation, and processing method.** Jars should be dated by the exhibitor before exhibiting.
- All preserved foods must be prepared within one year period prior to judging date.

1. Pickles
2. Relish – any type
3. Unclassified Sauces or Catsup
4. Fruit Jelly (whole fruit) or unclassified jellies
5. Jams, Fruit Preserves
6. Best Collection of Jellies and/or Jams (3 varieties)
7. Fruit Butters
8. Canned Fruit
9. Best collection of pickled items (3 varieties)
10. Fruit Sauce
11. Tomatoes
12. Best Collection of Fruits
13. Juices
14. Canned Vegetables
15. Best Collection of Vegetables (3 varieties)
16. Green Beans
17. Salsa
18. Dehydrated (any type) in jar
19. Soups
20. Pie Filling
21. Honey
22. Unclassified

FOODS

Superintendent – Judy Hudson

Assistant – June Neyhouse & Donna Burkett

Premiums: \$3.00 \$2.00 \$1.00

Complete recipes must accompany all food exhibits including amount of ingredients and directions on 3X5 or 4X6 card. All food exhibits must be on cardboard or paper plates, except pies, and be in a plastic bag or covered with plastic. We will not be responsible for return of containers. Baked products should be entered whole for exhibit. A portion will be kept for exhibit display after judging unless it is Best of Show — the entirety of those products will be kept for display.

-

Classes:

Cakes – Iced or Un-iced (All entries must be from scratch except #5)

No perishable ingredients may be used in frostings.

1. Butter Cake
2. Chocolate Cake
3. Sponge Cake
4. Angel Food Cake
5. Unusual Cake from a mix
6. Unclassified

Cookies – 4 each

7. Drop
8. Refrigerator (rolled and sliced)
9. Bar
10. Decorated Fancy
11. No Bake
12. Brownies
13. Unclassified

Pies—Enter the whole pie.

No cream/custard pies (including pumpkin)

14. Fruit – one crust
15. Fruit – two crust or lattice top
16. Pie shell
17. Pecan Pie

Continued on next page....

FOODS (continued)

Bread

18. 4 Yeast Rolls
19. 4 Breakfast Rolls
20. Tea Ring
21. Yeast Bread
22. Bread Machine Bread
23. Quick Bread
24. 4 Muffins
25. 4 Biscuits
26. 4 Pieces Corn Bread
27. Scones
28. Unclassified

Candy – 4 pieces in each class

28. Fudge
29. Hand Dipped
30. Peanut Brittle
31. Hard Rock Candy
32. Unclassified

For baked product competition: Filling, frosting, glazing, pie filling and meringue, whether cooked or uncooked, are NOT permitted to contain cream cheese, whipped cream, unpasteurized milk, eggs or egg whites (pasteurized eggs or eggs cooked to 160° may be used). Home canned fruits, vegetables or meats are not permitted in products. **Recipes must be provided that show which ingredients were used in each part of the products.** Contestants should carefully wash their hands and make sure that their hands do not have any open cuts before preparing foods. Whenever possible, baked products should be transported and stored in chilled coolers (41°F).

Judges and individuals who will consume products from County and State Fair competitions should be informed that they are at risk for foodborne illness since the established policy cannot guarantee that an entry which is a potentially hazardous food has been properly prepared or handled before, during or following the competition.

GARDEN

Superintendent – Janet Ault

Assistants – Emma Ault

Premiums: \$3.00 \$2.00 \$1.00

- The exhibitor must home grow entries.
- All entries must be edible.

-

Classes:

- | | |
|---|---|
| 1. Zucchini Squash | 17. Cabbage |
| 2. Summer Squash | 18. Okra (3) |
| 3. Corn (three ears with
window cut in husk) | 19. 3 Vegetable Variety Tray
(no tomatoes) |
| 4. Green Beans (15 pods) | 20. Cauliflower |
| 5. Lima Beans (15 pods) | 21. Broccoli |
| 6. Green Peppers (3) | 22. Brussels Sprouts (3) |
| 7. Banana Peppers (3 long) | 23. Carrots (3) |
| 8. Hot Peppers (3) | 24. Apples (3) |
| 9. Potatoes– Red (3) | 25. Tomatoes (regular, 3
slicing) |
| 10. Potatoes-White (3) | 26. Salad Tomatoes
(5 red or yellow) |
| 11. Potatoes—Yukon Gold (3) | 27. Italian Tomatoes
(3 used for sauces) |
| 12. Beets (3) | 28. 3 Fruit Variety Tray |
| 13. Onions-Red (3) | 29. Blackberries (15) |
| 14. Onions-White (3) | 30. Unclassified |
| 15. Cucumbers (3) | |
| 16. Eggplant | |

\$10.00 Award for the BIGGEST!

- | | |
|-----------------|--------------|
| 31. Ripe Tomato | 34. Zucchini |
| 32. Squash | 35. Potato |
| 33. Cabbage | |

*The award will be given by **GIBSON COUNTY MASTER GARDENERS**. Entries in this division may not be exhibited in any other division.
The exhibitor must home grow all entries in 2022.*

NEEDLEWORK

Superintendent – Ann Georges

Assistant—Sue Harrell

Premium: \$3.00 \$2.00 \$1.00

Classes:

Crochet

1. Baby Article
2. Set of 2 or more baby articles
3. Afghans & bedspreads
4. Doilies
5. Doll
6. Accessories (hat, gloves, mittens, handbags)
7. Poncho, cape or shawl
8. Scarf
9. Sweater
10. Tablecloth
11. Household

Needlepoint

12. Picture or wall hanging
13. Household item
14. Plastic canvas articles

Knitting

15. Baby article
16. Set of 2 or more baby articles
17. Afghans
18. Bedspread
19. Accessories (hats, gloves, handbags, etc)
20. Poncho, cape or shawl
21. Scarf
22. Socks
23. Sweater
24. Household item

Embroidery

25. Counted cross stitch
26. Cross stitch
27. Crewel embroidery
28. Machine embroidery
29. Silk ribbon embroidery
30. Traditional embroidery

Vintage Needlework

(Newly handmade items using vintage skills)

31. Candlewicking
32. Hardanger embroidery
33. Lace making
34. Needle punch
35. Swedish weaving
36. Tatting

Rugs

37. Hooked
38. Braided

Pillows

39. Appliqued
40. Surface stitchery (cross stitch, hand embroidery, machine embroidery)
41. Candlewicking
42. Crocheted
43. Knitted

Woven

44. Any article

Felting

45. Gloves & mittens
46. Hat
47. Handbag
48. Scarf

PHOTOGRAPHY

Superintendent – Mary Kay Turner

Assistant—Rita Hirsch

Premium: \$3.00 \$2.00 \$1.00

- Entries must be suitable for family viewing.
- Pictures should be developed on good quality photo paper, not copier or computer paper.
- Photos should be matted only, not framed, on **clean black, white, ivory, or gray mat board**. Do not cover photos with plastic or shrink-wrap.
- Photos can be either 5x7 or 8x10, and may be displayed either vertically or horizontally.

-

-

Non-Professional

-

1. Nature – scenery – black & white
2. Nature – scenery – color
3. Portraits – black & white
4. Portraits – color
5. Animals/Living creature – black & white
6. Animals/Living creature – color
7. Structures – black & white
8. Structures – color
9. Human Interest – black & white
10. Human Interest – color
11. Unclassified – black & white
12. Unclassified – color
13. Digital Art- computer manipulated
(Must bring original 4x6 print)
14. Matted collage up to 16x20
or 5 mated photos which
maybe displayed vertical
or horizontal. Must be a series or tell a story

QUILTED ITEMS

Superintendent—Peg Hall

Assistant—Becky Richeson

Premium: \$3.00 \$2.00 \$1.00

- **Unless otherwise specified, all work must be done by exhibitor by hand or with machine quilting.**

Classes:

1. Quilts/Bedspreads (70 in. x 95 in. or larger)
 - A. Pieced**
 - B. Whole cloth/cross stitched/embroidered/appliqued**
 - C. Made by 2 or more individuals (exhibitor made top individually or within a group, and someone else or group quilted)**
 - D. Found and finished (finished top found in family belongings, at auction/sale, etc. and exhibitor quilted and finished. Please include history of quilt, if known)**
2. Quilts/Bedspreads (less than 70 in. x 95 in.)
 - A. Pieced**
 - B. Whole cloth/cross stitched/embroidered/appliqued**
 - C. Made by 2 or more individuals (exhibitor made top individually or within a group, and someone else or group quilted)**
 - D. Found and finished (finished top found in family belongings, at auction/sale, etc. and exhibitor quilted and finished. Please include history of quilt, if known)**
3. Placemats **(minimum of 2) table runner/pillow**
4. Wall Hangings **(must have a sleeve and rod to display)**
5. Historic (For display only. No judging will occur) **Please Include history or quilt, if known.**
6. Does not fit any other category

SEWING

Superintendent – Marilyn Young
Assistant—Betty Deputy

Premium: \$3.00 \$2.00 \$1.00

- Exhibit must be clean and on a hanger
- Can be male or female

Men or Women's

Adult Wear:

1. Shirt or blouse
2. Pants or skirt
3. Dress or jumper
4. Separates-2 or more articles
5. Active wear
6. Sleepwear
7. Accessories
8. Miscellaneous

Children's Wear:

9. Special Occasion
(includes First Communion
Dress, etc)
10. Play/Active Wear
11. Costumes
12. Outerwear
13. School Wear
14. Miscellaneous
15. Sleepwear

Household Sewing:

- A. Pillow covers or cases
- B. Bedspreads/Comforters

WOOD CRAFT

Superintendent – Joe Padgett

Premium: \$3.00 \$2.00 \$1.00

Entries may be more than one piece (ex: set of toys).

Classes:

-
Small Handmade: Less than 6 inches

1. Toy(s)
2. Woodcarving
3. Woodturning
4. Unclassified

Large Handmade: More than 6 inches

5. Children's furniture
6. Household furniture
7. Toy(s) 2 or more pieces
8. Woodcarving
9. Outdoor furniture
10. Doll House
11. Woodturning
12. Unclassified

Purchased and Finished pieces

13. Children's furniture
14. Household furniture
15. Toys
16. Household
17. Doll House
18. Large– More than 6 inches
19. Small– Less than 6 inches
20. Unclassified

Specialty Display

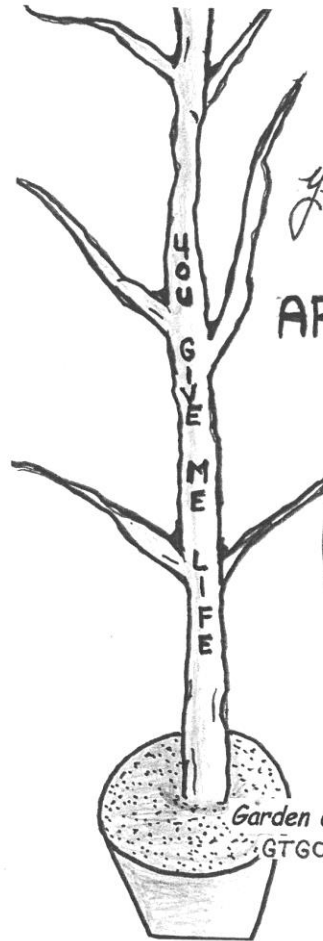
- May exhibit any item you have made or grown that would coincide with the Open Class Projects. Limited to 2 entries per person.
- This is a non-judged, for display purposes only department.
- Specialty Display was created to provide a non-judged exhibition option for all in the Gibson County community to be able to participate in Open Class regardless of needs
- You are more than welcome to exhibit items in the Specialty Display in addition to other Departments in Open Class.

Gibson County Extension Homemaker

Club Displays

1. Each Extension Homemaker Club in Gibson County may enter one exhibit.
2. Entry times and removals will be the same as for other Open Class exhibits.
3. Space for the exhibits will be assigned when the exhibit is entered. Every club that enters will have floor and wall space.
4. No commercial advertising. The Superintendent will rule on questionable exhibits. It is not necessary to cover tables.
5. Any article exhibited in a club display is not eligible for individual exhibit.

ANY COMPLETE EXHIBIT THAT HAS BEEN DISPLAYED
PREVIOUSLY CANNOT BE EXHIBITED AGAIN



150
Year Celebration
of
ARBOR DAY



Princeton Green Thumb Garden Club
Call Jodi (385-5891)

Garden Club Members Wanted:
GTGC1951@GMAIL.COM



**Thank You
Gibson County
Farm Bureau
for their
continued
support of the
Open Class Department
of the
Gibson County Fair**



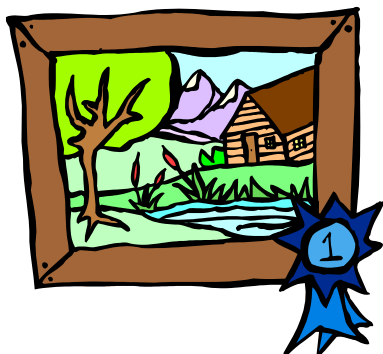
Gibson County Master Gardeners
Sponsor of Best of Show Award and sponsoring
biggest vegetable including:

ripe tomato, squash, cabbage, zucchini, and
potato





**Gibson County Extension
Homemakers Have
Supported the Open Class
Department of the Gibson
County Fair for over 75 years.**





www.pathwayfamilyfarms.com

Mike, Beverly, Jacob & Lauren Hirsch
Christopher & Emily Cooper

5756 S 325 W
Fort Branch, IN
812-753-1010

**Crimson Fire
Protection
Inc.**



Sprinklers Save Lives

Mark Gray Manager

Evansville, Indiana

812 -319- 5195

crimsonfireprotection@gmail.com

Thank you to our sponsors!!!!

Amanda Originals
202 W Walnut
Ft. Branch, IN 47648
812-753-3463

Red Dawn Armory
2178 S Old Hwy 41
Princeton, IN 47670
812-385-4741

Kiesel Enterprises, Inc
1198 S Kiesel Drive
Princeton, IN 47670
821-386-6580

Walker's Hometown
Store
1607 W Broadway
Princeton, IN 47670
812-385-5757

Sue's Flowers & Gifts
310 W Morton
Oakland City, IN 47660
812-749-4500

The Brickhouse Boutique
100 W Locust St
Ft. Branch, IN 47648
812-664-6737

Uniquely Michael's
121 W Broadway
Princeton, IN 47670
812-386-0065

Old National Bank
1703 W Broadway
Princeton, IN 47670

Princeton Auto Parke
820 S Main
Princeton, IN 47670
812-386-8282

Steve Faulkner
Automotive
2843 State Road 64
West
Princeton, IN 47670
812-386-6193

Memmer's True Value
990 North US Hwy 41
Princeton, IN 47670
812-385-2641

LeeAndreas Sweet
Treats, Café & Bakery
105 N McCreary St.
Ft. Branch, IN 47648
812-615-0235

The Log Inn Family
Restaurant
One mile east of 41 on
Warrenton Road
12491 S 200 East
Haubstadt, IN 47639
812-867-3216

Siemers Auto Glass Co.
1251E Broadway St.
Princeton, IN 47670
812-386-1100

Quilts in Bloom
Tues 2-8 Fri/Sat 10-4
879 W CR 1000 S
Haubstadt, IN 47639
812-768-6009

Stop & Go Inc.
120 N. 3rd St
Owensville, IN 47665
812-729-7460

Cunningham Tax &
Accounting
131 E Morton Street
Oakland City, IN 47660
812-749-3670

Ferguson Ag Insurance
127 E Morton
Oakland City, IN 47665
812-729-7460

Owensville Auto Body
Inc.
119 E Brummitt St.
Owensville, IN 47665
812-724-4305

Hueyz Handrafted
5038 S St. Rd. 65
Owensville, IN 47665
812-724-2405



Ritter Farms
2167 Old St. Rd. 65
Owensville, IN 47665
812-664-0704

Mae's Market
4058 S Co Rd 350 W
Owensville, IN 47665
812-632-0491

