

**4-H**

***FAMILY GUIDE***



New Member  
Guide To  
4-H In  
Orange County

## Contents

|  |    |
|--|----|
| WELCOME .....                              | 3  |
| WHAT IS 4-H?.....                          | 5  |
| Mission.....                               | 5  |
| Motto.....                                 | 5  |
| Emblem.....                                | 5  |
| Colors.....                                | 5  |
| 4-H Pledge.....                            | 5  |
| Membership.....                            | 5  |
| WHAT MAKES 4-H DIFFERENT?.....             | 5  |
| HOW DOES LEARNING HAPPEN IN 4-H.....       | 6  |
| THE 4-H YEAR.....                          | 6  |
| WHO'S WHO IN 4-H.....                      | 7  |
| LOCAL LEVEL.....                           | 7  |
| COUNTY LEVEL.....                          | 7  |
| STATE LEVEL.....                           | 7  |
| 4-H CLUBS.....                             | 8  |
| 4-H NEWSLETTER.....                        | 8  |
| 4-H HANDBOOK.....                          | 9  |
| RECORD KEEPING IN 4-H.....                 | 9  |
| 4-H Project Manuals and Record Sheets..... | 9  |
| My Record of 4-H Achievement Cards.....    | 9  |
| Fair Entry.....                            | 9  |
| 4-H PROJECTS.....                          | 9  |
| PROJECT SELECTION .....                    | 10 |
| PROJECT AREAS AVAILABLE THROUGH 4-H.....   | 10 |
| ANIMAL SCIENCES.....                       | 10 |
| COMMUNICATION AND EXPRESSIVE ARTS.....     | 10 |
| ENGINEERING & TECHNOLOGICAL SCIENCES.....  | 11 |
| HEALTHY LIVING.....                        | 11 |
| LEADERSHIP & CITIZENSHIP.....              | 11 |
| PLANT & ENVIRONMENTAL SCIENCES.....        | 11 |
| FAIR JUDGING.....                          | 11 |
| RIBBONS .....                              | 12 |
| AWARDS & TRIPS.....                        | 12 |
| ACTIVITIES AND EVENTS .....                | 13 |
| HOW TO BECOME A 4-H VOLUNTEER.....         | 13 |
| 4-H Terms Used in Orange County.....       | 14 |
| My Record of 4-H Achievement EXAMPLE ..... | 18 |
| FAQS.....                                  | 20 |
| CLUB LIST.....                             | 23 |



## WELCOME

2024

Dear New 4-H Family,

Welcome to the Orange County 4-H Program! We are excited to have you join us. We look forward to meeting your family and helping you have a successful 4-H experience. Below are a few things you need to know about our county's 4-H program.

When you signed up through 4-H online, you created an account. You should use the same login credentials throughout your 4-H career. 4-H online is used to add/drop any 4-H projects you wish to complete, sign up for various 4-H events/trips, as well as for re-enrollment into the next program year.

Throughout the year, we communicate with our 4-H families primarily by email broadcasts, occasionally by phone, or via printed materials mailed to the primary address you have listed in 4H online. Please be sure to keep this information as up to date as possible to avoid missing important deadline information. You can even set up text notifications through your 4-H online account.

A 4-H project is a learning opportunity for a 4-H member. Our staff is more than happy to assist you with any information on all projects, requirements, and selecting the perfect project for your child's personal interests. The deadline for project entry in the County or State 4-H fair is May 15<sup>th</sup> each year. Each member must complete at least one project's requirements for that project to count as a completed year in 4-H. Youth can receive the honor of "10-year member" by completing 10 consecutive years in grades 3-12. The projects are then judged and exhibited at the County 4-H fair in the summer.

As a member of 4-H, youth may join one of several 4-H clubs offered in Orange County 4-H. 4-H Clubs are a way for members to build community and learn more about 4-H. Some clubs are project-specific like our Happy Hounds Dog Club, but we also have general clubs which educate youth on a variety of topics related to 4-H including projects. Monthly club meetings typically run January-June.

You may have noted on your account that you would like to be contacted to learn about clubs. Attached is a club list from this past year. We anticipate changes as our 4-H year goes forward. However, this list will give you a basic idea of where clubs meet and when. A calendar of club events/meetings can be found at <https://extension.purdue.edu/county/orange/index.html>, which we will update as we get new info.

We understand busy schedules and juggling extracurricular activities with school, work, and family time; and club meetings are not mandatory, but are an opportunity to build friendships, memories, and much more. So of course, we encourage you to allow your child to get involved in the experience of it all.

How to keep up with important 4-H information such as: Activities, Events, Programs, & Projects

1. The Orange County 4-H Member Handbook—This contains detailed information about participation in 4-H and requirements for completing and exhibiting different projects.
2. Orange County Extension Newsletter—This includes the 4-H newsletter as it keeps you up to date on new guidelines, workshops, upcoming events, and much more.
3. 4-H Club Meetings—Here you will not only receive information and have fun, but you will have the opportunity for help and advice from leaders, 4-H members and their families.
4. Project Manuals—These manuals have information about how to successfully complete a project and are available in the Extension Office.
5. Social Media – We frequently post 4-H information regarding upcoming events and more.

In this packet, you will find some handouts that will help you out along the way!  
Included in this packet:

- **Orange County 4-H Family Guide:** this guide will give you some basics of 4-H, what to expect from our program, and a quick glossary of terms in case you hear or see something you are not familiar with.
- **What is 4-H? :** This handout will give you an overview of the 4-H program
- **4-H Meeting:** Learn about club meetings – what they typically look like, what their purpose is, etc.
- **Pledges:** Each meeting and 4-H event is started with the Pledge of Allegiance and the 4-H Pledge. A copy of each pledge is in this folder for you to review.
- **Handouts for Parents/Guardians:** Learn what is expected of you as a 4-H Parent. Review some “do’s and don’ts” when it comes to helping your 4-Her. We want you to be involved with the 4-H program, but would remind you that it is a program for the youth!
- **Orange County Slice:** Our Orange County Slice is our quarterly newsletter. You will be able to access it from your 4-HOnline account and it will also be on our website.
- **Important dates:** Be sure to put these dates on your calendar! More will be to come, but these will get you started!
- **Clubs and club leaders list:** See just how many clubs we have in Orange County and who our leaders are.
- **Project Descriptions:** See a quick overview of the projects we offer here in Orange County to see what you might be interested in.
- **Trip Information:** A handout about the 2024 4-H Trips available to youth at the State Level
- **Volunteering:** The first step in becoming a screened 4-H Volunteer.

If you have any questions after reviewing this folder, please feel free to contact the Orange County Extension Office. We would be happy to go over any questions you may have. We are glad to have you with us. Please let us know how we can help!

Once again, welcome to Orange County 4-H. Follow our Facebook page for all the happenings in Orange County 4-H <https://www.facebook.com/PurdueExtOrangeCounty>. Thank you for joining Orange County 4-H!

Thank you,

*Julie Carrell*

Extension Educator, 4-H Youth Development  
Extension Educator, Agriculture & Natural Resources  
County Extension Director

# WHAT IS 4-H?

4-H is an extracurricular, volunteer led, family-oriented program that includes activities for youth in grades 3<sup>rd</sup> through 12<sup>th</sup>, with Mini 4-H being for youth in grades K through 2<sup>nd</sup>.

## Mission

The Indiana 4-H Youth Development mission is to provide real-life educational opportunities that develop young people who will have a positive impact in their communities and the world. 4-H has three main mission areas: Science, Technology, Engineering, Math (STEM); Healthy Living; and Civic Engagement.

## Motto

“To make the best better.”

## Emblem

The 4-H emblem is the four-leaf clover with the letter “H” on each leaf. The Hs stand for Head, Heart, Hands, and Health.



## Colors

The 4-H colors are green and white. Green symbolizes nature’s most common color and represents life, springtime, and youth. White symbolizes purity.

## 4-H Pledge

I pledge

My **head** to clearer thinking  
My **heart** to greater loyalty  
My **hands** to larger service, and  
My **health** to better living  
For my club, my community,  
my country, and my world.

## Membership

More than 6 million youth are 4-H members throughout the United States. In Indiana, there are more than 250,000 youth who are 4-H members. Orange County has an enrollment of around 350 each year.

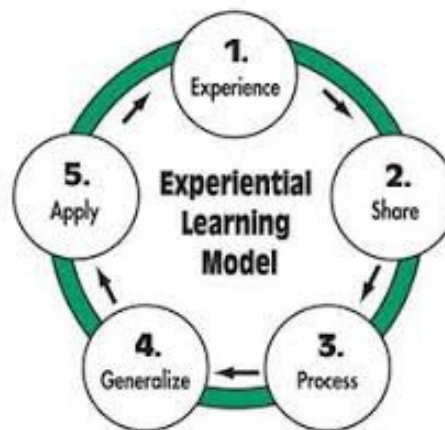
## What Makes 4-H Different?

4-H is unique because it is the only youth organization tied to the research base of our nation’s land-grant university system. This connection allows Purdue Extension Staff and the volunteers they work with to receive training based on the most up-to-date research on youth development theory and practice.<sup>1</sup>

In Indiana, 4-H can be found in all 92 counties as delivered through *Purdue Extension*. Purdue Extension is the outreach link between local communities, the land grant universities, and the United States Department of Agriculture (USDA). Since 1914, this educational system has assisted in the well-being and productivity of people throughout the United States.

# HOW DOES LEARNING HAPPEN IN 4-H?

Since young people learn best when they are actively involved in the learning process, 4-H programs are designed to provide hands-on educational experiences that are reinforced through personal and group reflection and application – “do-reflect-apply.” This research based educational methodology is called “Experiential Learning.”<sup>1 2</sup>



Phiffer, J.W., & Jones, J.E. "Reference Guide to Handbooks and Annuals"  
© 1983 John Wiley & Sons, Inc.  
Reprinted with permission of John Wiley & Sons, Inc.

## THE 4-H YEAR

A new 4-H year starts October 1 and concludes in September of every year. In the fall, Orange County hosts a 4-H Kickoff to educate the public about our 4-H Program. Youth are welcome to enroll at the 4-H Kickoff or by visiting [in.4honline.com](http://in.4honline.com) at any time *after* October 1.

Below are some events that take place in Orange County throughout our 4-H Year:

|   |   |   |
|---|---|---|
| <p><b>October</b></p> <ul style="list-style-type: none"> <li>• Enrollment Begins</li> <li>• 4-H Kickoff</li> <li>• National Youth Science Day</li> <li>• National 4-H Week</li> </ul>             | <p><b>November</b></p> <ul style="list-style-type: none"> <li>• Indiana Youth Leadership Summit</li> </ul>  | <p><b>December</b></p> <ul style="list-style-type: none"> <li>• 4-H Scholarships Open</li> <li>• Heifer International Trip Applications Due</li> </ul>  |
| <p><b>January</b></p> <ul style="list-style-type: none"> <li>• January 15 – statewide target enrollment date</li> <li>• Scholarship Applications Due</li> <li>• Livestock: Beef ID Day</li> </ul> | <p><b>February</b></p> <ul style="list-style-type: none"> <li>• Camp Counselor Interviews</li> <li>• February 24-All Species Workshop</li> </ul>  | <p><b>March</b></p> <ul style="list-style-type: none"> <li>• Spark into the Dark- Spark Club on the 2024 Solar Eclipse</li> </ul>   |
| <p><b>April</b></p> <ul style="list-style-type: none"> <li>• April 26-Animal ID Day</li> </ul>  | <p><b>May</b></p> <ul style="list-style-type: none"> <li>• May 15 – Drop/Add Deadline</li> <li>• May 15 – Livestock Identification Deadline on 4- H Online</li> <li>• Camp Counselor Trainings</li> </ul> | <p><b>June</b></p> <ul style="list-style-type: none"> <li>• Mini 4-H Day Camp</li> <li>• May 30-June 2 4-H Camp (3<sup>rd</sup>-6<sup>th</sup> grade)</li> <li>• 4-H Academy (9<sup>th</sup>-12<sup>th</sup> grade)</li> <li>• State Jr. Leader Conference</li> <li>• 4-H Round Up (7<sup>th</sup>-9<sup>th</sup> grade)</li> <li>• 4-H Chorus/Band</li> <li>• Fair Entry Deadline</li> <li>• June 29-Project Check-in (judging)</li> </ul> |
| <p><b>July</b></p> <ul style="list-style-type: none"> <li>• Orange County 4-H Fair</li> <li>• Pre-fair judging (foods)</li> </ul>   | <p><b>August</b></p> <ul style="list-style-type: none"> <li>• Indiana State Fair</li> <li>• Jr Leader Completion Trip</li> </ul>  | <p><b>September</b></p> <ul style="list-style-type: none"> <li>• Preparation for New 4-H Year</li> <li>• Promotional Events</li> </ul>  |

*Several programs are also held monthly throughout the year including Club meetings, Jr. Leader programs, Mini 4-H events, and workshops. Be sure to read your emails & newsletter for more info!*

# WHO'S WHO IN 4-H

## LOCAL LEVEL

|                       |  |
|-----------------------|--|
| Mini 4-H Member       | Any child currently in grades K, 1 <sup>st</sup> or 2 <sup>nd</sup> who has completed the enrollment process for 4-H.  |
| 4-H Member            | Any child currently in grades 3 <sup>rd</sup> through 12 <sup>th</sup> who has completed the enrollment process for 4-H  |
| Club Leader           | An adult volunteer who is responsible for the organizational aspects of the club. All 4-H volunteers go through a screening process which includes a background check before being allowed to work with 4-H members. |
| Junior Leader         | A 4-H member who is in grade 7 through 12 that has selected to be part of the Jr. Leader project. Jr. Leaders have monthly meetings, perform community service projects, and sponsor various events.                 |
| 4-H Parents/Guardians | Important to the success of the child in 4-H. Parents are strongly ENCOURAGED to attend club meetings as well as county-wide events with their child.  |

## COUNTY LEVEL

|   |   |
|---|---|
| 4-H Council                                       | The 4-H Council meets monthly and is the policy-making organization for Orange County 4-H through the Extension Service of Purdue University. The 4-H Council also provides methods of recruiting members, establishes and services 4-H clubs, develops positive 4-H community awareness, provides continual financial support. |
| 4-H Incorporated Board                            | The 4-H Inc Board is made up of members to care for the 4-H Fairgrounds and make decisions related to the annual 4-H Fair regarding maintenance and events.   |
| Project Advisor/Leader/Livestock Committee Member | A volunteer who answers questions a 4-Her may have about a project. This person is often a 4-H parent with special expertise in a particular subject area. Many Project Advisors/Leaders hold workshops based on their projects.  |
| Extension Educators                               | They are professionals who help to carry out the 4-H program and serve as a source of research-based information.   |

## STATE LEVEL

|                   |   |
|-------------------|---|
| Purdue University | Purdue is a land grant college that has the responsibility for taking education to the people of the state. The 4-H program is part of that directive and has a state 4-H Office located on campus.             |
| State 4-H Program | The State 4-H Program has the responsibility for 4-H programming at the State Level. The 4-H Program has employees based at Purdue University.  |
| State Specialist  | State Specialists have responsibility for the 4-H program on a statewide basis for a specific part of the total 4-H program. They are under the direction of the State 4-H Program Leader at Purdue University. |

Indiana 4-H Foundation     A nonprofit organization that works to provide additional resources for the 4-H program. They sponsor scholarships, funding for county and state programs, finance the State 4-H Leaders recognition, trips for outstanding youth to National 4-H Congress, as well as underwrite the cost of many 4-H trips offered on the state level. Forms for donation are available at the County Extension Office. They also sponsor the 4-H license plate program. Contact the Extension Office for information about license plates for your vehicles.

## **4-H CLUBS**

4-H clubs are groups of youth and adults who meet on a regular basis and together practice positive youth development and cooperative learning.<sup>1</sup> Clubs usually meet once a month from fall until August. Each club elects officers from the club membership. The officers conduct the business portion of the club meeting.

4-Hers may belong to any 4-H Club in the county. Residence does not restrict club membership. However, most 4-Hers belong to the club closest to where they live or attend school. In Orange County, we have 4-H Clubs in all parts of the county. All Clubs should strive to create a quality learning environment for youth that give members a chance to be an active part of the club, to enhance life skills, and to promote positive youth development throughout all activities. All clubs also participate in community service projects throughout the year.

4-Hers may change membership to another club if they wish. It is important to change your club information on 4-HOnline and notify the leaders of both clubs (the one you are leaving and the one you are joining).

### **Types of Clubs:**

**Community Club**     A club that is usually hosted in a specific part of the county. Meetings in Community Clubs cover a broad range of topics within the 4-H Program

**Project Club**     A club focused more deeply on a specific subject matter related to 4-H Projects. Dog is an example of a Project Club. Meetings in Project Clubs usually focus on topic areas in that specific project.

### **Selecting a Club**

Youth may participate in one or more clubs depending on their interests. It is recommended that if a youth is involved in a project that has a project-related club, they be involved with that club as well since many of those club meetings will help the youth understand topics in that project. Other things to consider when selecting a club: location, dates of meetings, size of club you are comfortable with, and areas of interest.

## **4-H NEWSLETTER**

The Orange County Slice is sent electronically. You may access it on 4-HOnline, on our website, or by requesting a hard copy at the Extension Office. Please read your newsletter carefully and keep it handy for any future references to find out about club meetings, project workshops, and other timely 4-H news! It can also be found on the Orange County Extension Website:

<http://www.extension.purdue.edu/orange> as well as on your 4-HOnline home page.



# 4-H HANDBOOK

The 4-H Handbook is found on the Orange County Extension website. One Handbook is provided per family each year. The Handbook has all projects and requirements listed for the current year.

Members may also ask the project advisor/leader about the project, the completion requirements, and Fair exhibit requirements for that project.

## RECORD KEEPING IN 4-H

### 4-H Project Manuals and Record Sheets

Most 4-H projects have manuals that give in-depth information for that project. Project Manuals are available for those projects. In the past, completion of Project Manuals was required, HOWEVER that is not the case anymore. As long as you complete the record sheet for your project and meet all project requirements you do NOT need to complete the manual.

Some projects may still be guided by the manual. Those projects are noted in the handbook and 4-Hers are encouraged to pick up a manual from the extension office to use while completing their project. Again, the manual will not be graded.

All projects, including livestock, have record sheets. They will be distributed at project manual pick up or by club leaders after that date.

### My Record of 4-H Achievement

“My Record of 4-H Achievement” should be filled out completely each. It is important that these be filled out accurately in order to remember what you have done in 4-H, and to apply for trips, awards and scholarships throughout your 4-H career.

4-H records should be filled out as completely and accurately as possible. Parents may oversee the child’s work, but we expect the child to do his or her own writing. Achievement Sheets are required to be considered for any awards given at the Achievement Program.

### FairEntry

After completing your 4-H Enrollment on 4-HOnline, a secondary website will open in June each year. This site is called FairEntry and is used to describe which projects you will be bringing to the Orange County 4-H Fair in July.

This site is used for record keeping as well as tracking ribbon placement throughout the fair for projects and livestock shows. FairEntry MUST BE COMPLETED in order to sell an animal in the Auction. <http://faireentry.com>

## 4-H PROJECTS

Members have the opportunity to learn more about a subject matter that they choose to study through completing hands-on activities. We refer to these as **projects**. In order to enroll in a project, members must sign up for them at the time of enrolling in 4-H. Each project has a manual or worksheets that guide youth through the learning process as well as a set of guidelines that helps them meet the project requirements.

We provide adult volunteers and staff who are knowledgeable on that particular subject who may provide workshops to allow the youth to learn about that topic in a social environment. Each project has a beginner, intermediate, and advanced level. This allows youth to build on their knowledge each year and continue to challenge their skills.

Projects are meant to be worked on over time, providing an educational opportunity for youth outside of the classroom setting. Often, youth will exhibit and display their project at a local county fair in order to show the community what they have learned.

There is no limit to the number of projects youth can sign up for, however, we suggest starting out with one or two the first year. If you know what project(s) you are looking for, simply find it listed under a specific category listed on the next page.

Several of our 4-H Projects in Orange County have hands-on, educational workshops that 4-H Youth may attend. 4-H members may add or drop projects until May 15 at 4:00 p.m. You may add or drop a project via 4-HOnline.

## **PROJECT SELECTION**

In choosing a project, a member will consult with their parents/guardians and 4-H leader(s). After considering all the projects available and the requirements of each, he or she should select one based on interest, needs, and capabilities; family situation; suitability of the area in which he or she lives.

Early in the 4-H career, a member needs to consider developing a tentative project plan to guide them until they are past 4-H age. Some projects should be continued each year, with increases in the size of the project when possible. Members may also want to enroll in additional projects which are related to his or her other project work. For example, a Wildlife member may want to enroll in Forestry or Soil & Water Conservation.

Successful project completion results in member satisfaction and expansion of future project work. The learning experiences one obtains through his or her project could even lead to career/vocation possibilities.

## **PROJECT AREAS AVAILABLE THROUGH 4-H**

### **ANIMAL SCIENCES**

Develop basic understanding of animals – their purpose and functions. Proper care, feeding and fitting of animals are also emphasized, with accurate records expected. Some project meetings, tours, etc. are required for each.

Animal Poster (Dog, Cat, Rabbit, Poultry)  
Beef (Steers, Heifers, Starters)  
Dairy (Steers, Females, Feeders)  
Goats (Dairy, Meat, Pygmy)  
Rabbit  
Sheep  
Swine  
Poultry

Cat  
Dog  
Small Animal  
Vet Science

### **COMMUNICATION AND EXPRESSIVE ARTS**

Learn to use your imagination and express it through various projects.

Arts & Crafts  
Fashion Revue  
Sewing  
Needlecraft

Construction Toys  
Home Environment  
Collections  
Model Craft

Consumer Clothing  
Photography  
Public Speaking

Do Your Own Thing  
Cake Decorating  
Performing Arts

## **ENGINEERING & TECHNOLOGICAL SCIENCES**

Gain skills in various Science, Technology, Engineering, and Math-related projects.

Aerospace  
Electric

Agricultural Tractor  
Lawn & Garden Tractor

Computer  
Computer Graphics

Small Engines  
Woodworking

## **HEALTHY LIVING**

These projects help 4-Hers develop healthy living techniques for themselves, their families, and their community.

Child Development  
Health  
Shooting Sports

Food Preservation  
Microwave Cooking  
Food Preparation

Bicycle  
Sportfishing  
Sports

## **LEADERSHIP & CITIZENSHIP**

Develop leadership skills through activities in your local club and also at the county and state level.

Genealogy

Junior Leader

This Is 4-H (3<sup>rd</sup> grade only)

## **PLANT & ENVIRONMENTAL SCIENCES**

Learn about natural resources, wildlife, conservation practices, and issues affecting our environment.

Entomology  
Weather & Climate  
Wildlife

Beekeeping  
Forestry

Floriculture  
Soil & Water

Geology  
Garden

## **FAIR JUDGING**

Projects exhibited at the 4-H Fair will be judged, although members may choose to exhibit without being judged and receive a participation ribbon. Non-livestock exhibits will be checked in and judged in the week prior to fair. The judging method we use is called "open judging".

Open judging means that your Fair exhibits will be judged in your presence, as you check in. Here are some questions that you may be asked in an open judging setting.

- ✓ What new things did you learn?
- ✓ Have you taken this project before?
- ✓ How much time did you spend on this project?
- ✓ What were your goals for this project?
- ✓ What would you like to change about your exhibit?
- ✓ Tell me something about this exhibit that you want me to know.
- ✓ What did you like best (or least) about this project?
- ✓ Did you have any difficulty with this exhibit or do you have any questions that I may be able to answer?

#### Indoor Project Judging Procedures:

1. Determine the day and time your exhibit will be judged (look for information in the newsletter, at the Extension Office, and from your Club Leader).
2. On judging day, find the area of the Fairgrounds where your project will be judged. You will need to wait in line until it is your turn to check in.
3. When it is your turn to be judged, hand your exhibit and your project completion card to the assistant at the table.
4. After you have checked-in with the assistant, you will be able to move in front of the judge. The judge will talk with you about your project and may ask questions.
5. The judge will tell you the ribbon color that you have earned. Champions/Reserves will not be known until the day that the exhibit building opens.
6. Your project will stay at the fair for the week.
7. Be sure to pick up your projects during Project Pick Up. No projects will be allowed to go home early!

## RIBBONS

Youth in Orange County can have conference judging with their judge. This means that the judging process is open for youth only as parents must wait in the lobby. Youth have the experience of talking with the judge, answering questions, and telling the judge about their 4-H project and components.

A 4-H judge is hired to evaluate exhibits, demonstrations, or record of standards for each exhibit. Ultimately, the final decision relies with the hired judge.

Below are the ribbons that are used for 4-H Exhibit Hall Projects (non-animal) and their meaning:

**Grand Champion:** best exhibit overall in the project area; meets all requirements

**Reserve Grand Champion:** second best exhibit overall in the project area; meets all requirements

**State Fair:** project is selected to go to the state fair

**Champion:** best exhibit overall in the division of the project; meets all requirements

**Reserve Champion:** second best exhibit overall in the division; meets all requirements

**Blue (Excellent):** project meets all the requirements

**Red (Good):** project work is good, does not meet the requirements in some way and/or there is a missing element of the project

**White (Fair):** given to an exhibit that is missing 2 or more important elements of the project

**Green (Participation):** given to an exhibit that does not meet any of the requirements of the project, but the project is complete

**Mini 4-H Multi-Colored:** not judged in competition with others; all mini-4-H projects receive a ribbon for completion of the project.

## AWARDS & TRIPS

Numerous awards are given in 4-H throughout the year. Most youth are recognized during the 4-H Fair, either during their livestock show or at the Achievement Program for exhibit hall projects. Pins are presented to all members through their 4-H Club upon completion of a 4-H year.

Some 4-H members are eligible (based on grade) to apply for trips that usually take place throughout the year. Many of these are educational workshops at Purdue University. Funding for trips varies depending on what the trip is. See enclosed trip packet with this New 4-H Family Guide.

# ACTIVITIES AND EVENTS

Each club will have special activities for their club members throughout the year. In addition, there are county-wide events in which a 4-Her may participate.

Project Workshops- A variety of workshops in different project areas are offered each year. Be sure to read your emails, newsletters, check Facebook, and website to know what workshops are offered.

4-H Camp -This camp takes place each June and is open to 4-H members in grades 3-6. The 4-H members participate in many outdoor activities as they learn by doing. 4-Hers in grades 9-12 may apply to be Counselors.

4-H Roundup - This event takes place in June each summer and is open to 4- Hers grades 7-9. 4-Hers travel up to Purdue and stay overnight in the dorms on campus while attending career workshops, touring campus as well as many fun activities planned with 4-Hers from all over the state.

4-H Academy @ Purdue – This event takes place in June and is held at Purdue University and is designed specifically for youth in grades 9-12 to get hands-on experiences through a diverse selection of workshop opportunities. Youth will stay on Purdue Campus dorms and meet youth all across the state learning about all aspects of 4-H.

Mini 4-H Day Camp - This active day camp is designed to introduce 4-H activities and projects to students in kindergarten through 2nd grade. Crafts, games, snacks and guest speakers make this a great learning opportunity for youth who are considering joining a 4-H Club. This program is led by Extension.

4-H Demonstration and Public Speaking Contests -Demonstrations are a “show-and-tell” presentation that gives members a chance to speak in front of a group and develop public speaking skills. For those who enjoy public speaking, there is a county public speaking/demonstrations contest, as well as the opportunity to speak at the Indiana State Fair.

SPARK Programs – Short term programs designed to “spark” interest of youth in a specific topic area. These vary in topics and have a minimum of six hours of education throughout a time period. The program ends with a culminating project where youth showcase what they learned. Exhibit at the Fair is not required.

## 4-H Terms Used in Orange County

**4-HOnline:** A website designed as an enrollment and data management system for 4-H throughout Indiana. Members must enroll in 4-H and pay a \$15 program fee in order to be in 4-H in Indiana. The 4-HOnline website allows youth and parents to sign up for projects, change contact information, and receive access to any information from the Extension Office. 4-H members must enroll on 4-HOnline before the advertised deadline!

**4-H Handbook:** May be found on the web or at the Orange County Extension Office, this book describes all projects, many activities and awards. It contains all the rules for non-livestock projects and should be used as a reference throughout the year. Read EVERYTHING related to your projects so you will not be disappointed on judging day.

**Achievement Program:** A banquet held after fair to celebrate the accomplishments of all of our 4-Hers. It is open to all 4-H families.

**Adult Leader:** A person who volunteers their time to recruit, plan, organize, counsel, encourage, compliment, redirect, and whatever else it takes to make sure members have a great 4-H experience. These people are not paid, so please be considerate of their time and let them know how much they are appreciated.

**Tag-Day/ID Day:** Many animals must be identified by a county ear tag or retinal scanning. Beef and Dairy Steers are typically tagged-in at the fairgrounds in January. In late April/early May, Rabbit Poultry, Goats, and Sheep have a tag-in day for animals to receive their necessary tags. Swine tags will be available for pick up on tag-in day as well.

**Community Service Project:** Each club is encouraged to complete a service project that helps their community.

**Communications Contest:** A contest is held at the fair for those members who would like to compete with a speech or demonstration. Members may advance to the State Fair and can win a trip to Washington, D.C.

**Drop/Add Deadline:** If you would like to add a project or delete one that you had signed up for by May 15. You may drop/add projects on 4-HOnline until May 15<sup>th</sup>.

**E-Mail Blasts:** We send out e-mails with important reminders and program information. If you would like to receive these, make sure to update your email address on your 4-HOnline account – or call the Extension Office. We will never give out this information to third parties.

**Extension Educator:** The title given to a professional employed by Purdue University to coordinate the 4-H program on the local level.

**FairEntry:** FairEntry is a secondary website to 4-HOnline. This website is used for 4-Hers to specify exactly what projects/livestock they are bringing to fair. This data-tracking system also keeps record of ribbon placements and other awards for the 4-Her.

**Fashion Revue:** A public fashion show for members in the clothing project who choose to participate. 4-Hers are judged on modeling, style, accessorizing, and fit. Consumer Clothing members **MUST** participate to complete their project.

**Indiana 4-H Foundation:** A statewide “4-H booster” association that provides funds for trips, scholarships, materials and grants for programs all over the state.

**Indiana State Fair:** Held in Indianapolis at the State Fairgrounds. Projects eligible for the fair must be checked in ahead of time. Animal projects must be entered by June 1 through the Indiana State Fair website. *The State Fair website is a completely different website than 4-HOnline.*

**Judging Teams:** These are usually livestock judging teams. Members learn to evaluate animals and defend their evaluations by giving oral reasons before an experienced judge. Orange County currently has Horse & Pony, Livestock, Dairy, Soils, and Forestry judging teams.

**Junior Leaders:** County wide project for members in grades 7 and above focusing on leadership, citizenship and fun.

**Livestock Identification:** Each livestock project must have their animals identified on 4-HOnline. This is in addition to the regular 4-HOnline sign up for the 4-H member. A premise ID number is required on each animal. Be sure to pay close attention to due dates for Livestock information!

**Orange County 4-H Fair:** The culmination of the 4-H year! Members display their projects, show livestock, and participate in special events throughout the week.

**Mini 4-H:** A “pre-4-H” program for children in grades K, 1 and 2 (as of January 1 of the fair year). Members take projects, attend workshops, and exhibit at the fair.

**“My Record of 4-H Achievement”:** You keep a copy of these cards for your entire 4-H career. The original will also be turned into the Extension Office or your 4-H Club leader.

**Newsletter:** This comes from the Extension office. It’s filled with very important information and is one source of communication with 4-H families. **Please read it and share it!**

**Officers:** Each club elects their own officers to include President, Vice President, Secretary, Treasurer, and possibly others. Members learn to conduct business through active leadership.

**Open Judging:** A style of judging where the 4-H member can talk directly with the judge while their project is being graded. Parents must wait outside of judging area, but are not allowed to speak to the judge.

**Stall Reservation:** Each member taking livestock to the fair must turn in a pen/stall reservation form so that livestock superintendents will know how many animals to expect and plan where they will be housed.

**Poster Project:** Many projects must be completed on a 22” x 28” poster displayed horizontally. They must be covered in heavy plastic (not saran wrap) and have space in the lower right-hand corner for an exhibit tag. You can purchase the correct size foam board and plastic sleeves at the Extension Office!

**Premise ID:** A number given by the Indiana State Board of Animal Health to identify locations where animals are housed. All livestock members will need to submit their premise ID number on the enrollment form. More information is available at [www.in.gov/boah](http://www.in.gov/boah).

**Program Fee:** A \$15 program fee is required of all 4-H members (except Mini). This fee is a state-wide fee that provides insurance for youth for 4-H events as well as provides money to the Indiana 4-H program.

**Project Exhibit Tag:** A tag generated by FairEntry that is put on the bottom right corner of every 4-H project displayed during the Orange County 4-H Fair. This tag includes information such as your name, club, and a description of your project. It does not include personal identification information such as address or phone number.

**Project Fair/4-H Kickoff:** An “open house” is held every year to allow parents and potential 4-H members to experience what 4-H is about. Many projects are on display, last year’s project winners, and leaders and junior leaders on hand to answer questions regarding 4-H, how to join, etc.

**Project Manual:** Most projects have manuals that provide educational material and/or learning activities for members.

**Pullorum-Typhoid testing:** It must be certified that all poultry at the fair have come from Pullorum-typhoid free flocks or they must be tested and found free of Pullorum-typhoid.

**Record Sheet:** Most projects have record sheets or activity books that must be turned in BEFORE the fair to complete. Check the project handbook to find out whether your record sheets are turned in to your local leader or turned in with your project.

**SPARK Program:** A short-term program based on a specific topic designed to “spark” interest of youth. Programs must be a minimum of six hours and include a culminating project at the end of participation. Exhibit at the Fair is not required.

**State Fair Livestock Entry:** Livestock entries for state fair exhibition are due June 1 on a different website than 4-HOnline! You will need to sign up on the State Fair Website to reserve your spot at the State Fair.

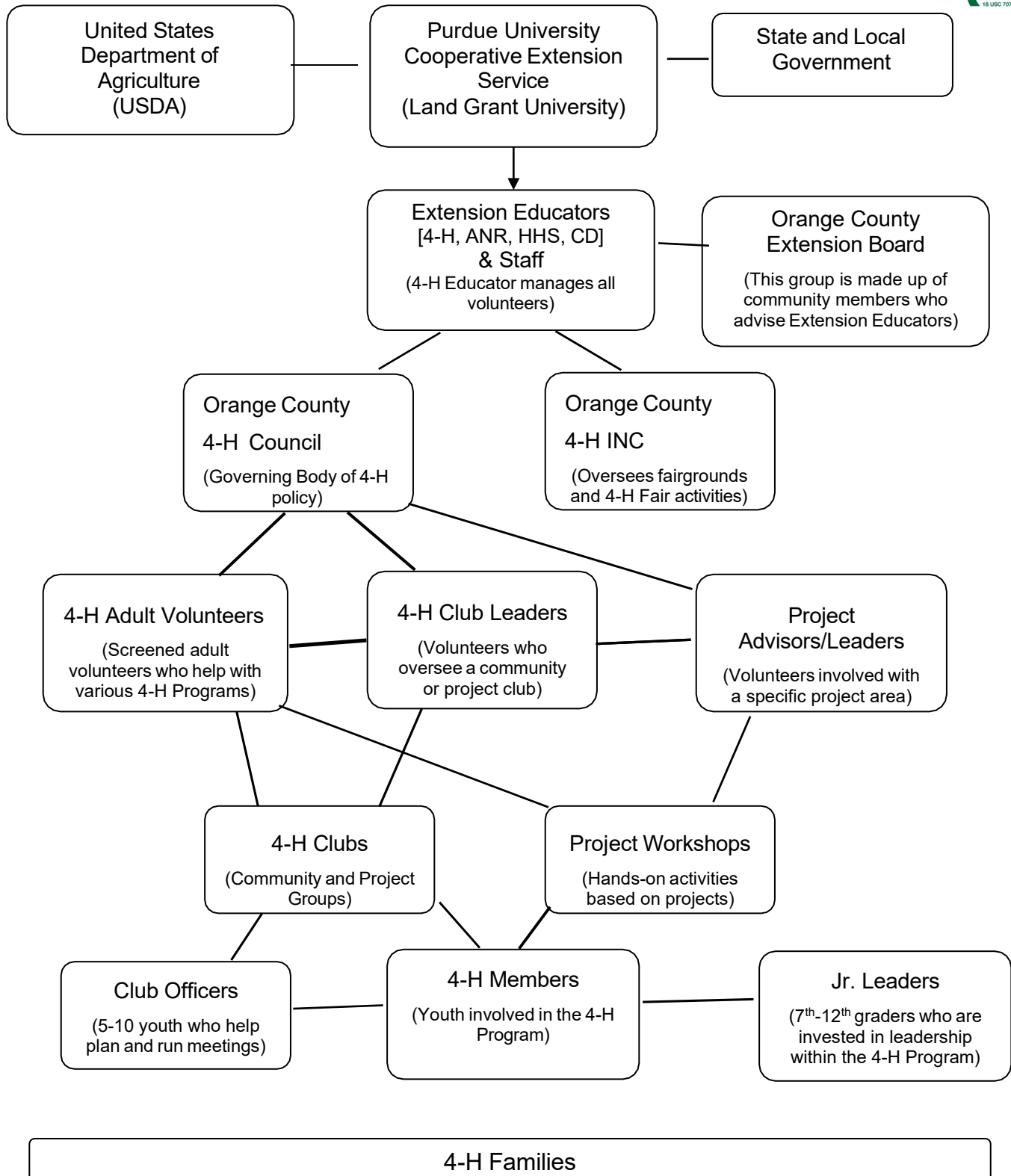
**Web Site:** 4-H information is provided on-line at Orange County Extension’s web site. Visit [www.extension.purdue.edu/orange](http://www.extension.purdue.edu/orange) for updated calendars, newsletters, project information and forms.

**Youth for the Quality Care of Animals (YQCA):** A training that must be completed yearly by 4-H members planning to exhibit a livestock animal at the State 4-H Fair and open class shows (except cats, dogs, horses, and Small Animal). Trainings are offered online only and can be substituted for county ILQC training requirements

**Indiana Livestock Quality Care (ILQC):** A training that must be completed yearly by 4-H members planning to exhibit a livestock animal at the Orange County Fair (except cats, dogs, horses, and Small Animal). Trainings are offered both online and in-person



# The 4-H Family Tree



Resources: 1 [https://www3.extension.umn.edu/sites/default/files/download/4-H\\_Family\\_Handbook-revised\\_10-10.pdf](https://www3.extension.umn.edu/sites/default/files/download/4-H_Family_Handbook-revised_10-10.pdf) 2 <https://nifa.usda.gov/sites/default/files/resource/Experiential-Learning-Model.pdf> <https://extension.purdue.edu/4h/Pages/projects.aspx>

"It is the policy of the Purdue University Cooperative Extension Service that all persons have equal opportunity and access to its educational programs, services, activities, and facilities without regard to race, religion, color, sex, age, national origin or ancestry, marital status, parental status, sexual orientation, disability or status as a veteran. Purdue University is an Affirmative Action institution. This material may be available in alternative formats. 10/2020

# My Record of 4-H Achievement **EXAMPLE**

*This is an EXAMPLE of what would be turned in to your club leader.*

## **EXAMPLE**

Name: \_\_\_\_\_ Date of Birth: \_\_\_\_\_

Address: \_\_\_\_\_ Telephone: \_\_\_\_\_

\_\_\_\_\_

Club: \_\_\_\_\_ Township: \_\_\_\_\_ Boy or Girl: \_\_\_\_\_

Parent or Guardian's Name: \_\_\_\_\_

| Year | Project           | Div/Lev | Description of Exhibit                                     | County Placing                        | State Placing |
|------|-------------------|---------|--|---------------------------------------|---------------|
| 2014 | Child Development | 2       | Poster about Child Care                                    | Blue, Honor                           | ---           |
| 2014 | Geology           | 2       | Exhibit box with six rocks and sandpaper showing texture   | Blue, Honor, Champion, State Fair     | Blue          |
| 2015 | Home Environment  | 3       | Refinished coffee table                                    | Red                                   | ----          |
| 2015 | Jr. Leaders       | N/A     | Year of service  | Blue                                  | ---           |
| 2015 | Astronomy         | 3       | A poster describing different types of stars and locations | Blue, Honor, Champion, Grand Champion | N/A           |
| 2015 | Swine             | 3       | Berkshire Gilt   | 4 <sup>th</sup> in class              | ----          |
| 2014 | Child Development | 3       | Imagination in a box                                       | Blue, Honor, Champion, State Fair     | Blue, Honor   |
|      |                   |         |  |                                       |               |
|      |                   |         |  |                                       |               |
|      |                   |         |  |                                       |               |
|      |                   |         |  |                                       |               |
|      |                   |         |  |                                       |               |



## Frequently Asked Questions & Answers Related to 4-H in Orange County

- **Who is eligible to be a 4-H member and when can I join?** Any youth in grades 3 through 12 is eligible to join. We have a special program for those in grade 2: Mini 4-H. For even younger youth, they can participate by exhibiting as a Future 4-H'er. All 4-H is based on the grade you are in on January 1<sup>st</sup> of that program year. Enrollment deadline is May 15<sup>th</sup>. There are many clubs in the county.
- **What is the cost to be a 4-H member?** There is a yearly \$15 enrollment fee. Project costs can vary. Most projects have a manual which are provided free of charge the first year in specific project/level and are available at the Extension Office. There is a huge range of cost in projects from something as inexpensive as a poster for a few dollars to a couple of thousand dollars for a steer.
- **Can a member enroll in additional projects after they turn in their enrollment form?** Yes, a member may add projects at any time by logging into your 4-H online account and making changes. Drop/add for each project year is May 15<sup>th</sup>.
- **Why should I go to club meetings and workshops?** Meetings and workshops serve as the information link for members. Members receive help on projects, make friends and learn about life skills. **All members** are highly encouraged to attend meetings on a regular basis. **Parents** are also encouraged to attend meetings to keep informed.
- **Does a member have to take a project to the county fair?** All members are highly encouraged to take projects to the fair. If something happens that keeps you from doing this, but you have completed the project, you can still get credit for completing by showing your project to your leader. The fair is the culmination of preparation, hard work and learning. Friendly competition and fellowship are valuable parts of learning. The fair is a showcase of an exhibitor's projects.
- **My animal died; how can I complete my project?** Unfortunately, this does happen. The project can be completed in any animal area by completing a poster which can be entered in the fair or by turning in the project manual to the project superintendent.
- **What ribbon system is used?** We use two different ribbon systems at the fair. Non-animal projects and some animal projects use the Danish system. This means that more than one blue ribbon may be awarded in a class. Each division will have a grand champion and a reserve grand champion designated. Livestock projects use placing ribbons, 1<sup>st</sup>-6<sup>th</sup> places.

- **What goes to the Indiana State Fair?** For livestock and other animals, there is a special entry for that is sent by the exhibitor directly to the State Fair Entry Department with a fee. All properly enrolled livestock and other animals may go to the State Fair. All livestock animals must have hair DNA samples submitted to the county office by May 15<sup>th</sup> in order to exhibit at the State Fair. There are varying dates, but the first due is for beef, sheep and swine and that date is June 1<sup>st</sup>. Forms are available in the office or the State Fair website. Non-animal projects are limited on the numbers that are eligible for the State Fair. The ones eligible will receive a letter that gives the dates they need to be taken to the fair. The Extension Office does take projects that are brought in by the designated time up to the Indiana State fairgrounds if they are not too large or fragile.
  
- **How often will my child and I have to go to the county or state fair?** If you take livestock projects, you will need to go every day to take care of your animals. Exceptions to this are dogs, cats and pocket pets, which are brought to the fair only on their day of judging and taken home after the show. Non-livestock projects are brought to the fairgrounds before the fair starts and are picked up on the last day of the fair.
  
- **What are Junior Leaders?** Junior Leaders are 4-H members who are enrolled in the Junior Leader project and are in 7<sup>th</sup> grade or higher. They assist the 4-H Leaders in organizing activities and helping younger 4-H members with their projects. They also participate in many community service projects and help with all aspects of the county fair.
  
- **As a 4-H parents, how can I help my child?** Assist your child in the selection of 4-H projects that are interesting and work with your home situation and family lifestyle. Show your interest and enthusiasm. Read over the handbook and project manual with your child to help them understand how to get started and what to do as they work on their project(s). Assist your child, but do not do the project for them. Your job is to teach, not to govern but to guide and not to control.



Purdue University is an equal opportunity/equal access/affirmative action institution.

## Purdue Extension Office Orange County

### Extension Educators:

- **Agriculture & Natural Resources/4-H Youth Development**
  - Julie Carrell – [carrell@purdue.edu](mailto:carrell@purdue.edu)
- **Health & Human Services/4-H Youth Development:**
  - Position Currently Vacant
- **County Extension Director:**
  - Julie Carrell – [carrell@purdue.edu](mailto:carrell@purdue.edu)

### Office Staff:

- **Office Manager:**
  - Amie Wilson – [wils1379@purdue.edu](mailto:wils1379@purdue.edu)
- **Secretary:**
  - Sara Durbin – [durbin4@purdue.edu](mailto:durbin4@purdue.edu)

**Our Office is located at the Orange County Complex Building (located just off the square in Paoli)**

**Address:** 205 E Main St, Ste 4, Paoli, IN, 47454

**Phone:** 812-723-7107

**Email:** [orangeces@purdue.edu](mailto:orangeces@purdue.edu)