

Extension Edge

An educational publication of Purdue Extension — DeKalb County



February 2024

Indiana 4-H Quality Livestock Care Program



All 4-H youth enrolled in a LIVESTOCK PROJECT (Beef, Dairy Beef, Dairy, Goat, Poultry, Rabbit, Sheep and Swine) must be QLC certified or have a YQCA online completion certificate.

If you choose to complete the YQCA option, you will register for the online course at <https://yqcaprogram.org/> Cost of the online YQCA course is \$12.

After completing the course, you must email the 4-H Educator with your certificate to receive credit.

If you prefer to take the QLC in person (Instructor-Led), the cost is \$3 per child and will be located at the Exhibit Hall (Fairgrounds); Registration is open now in 4-H Online!

Quality Livestock Care training sessions are:

Saturday, February 10, 10:00 a.m.

Monday, March 25, 1:00 p.m.

Saturday, April 20, 9:00 a.m.

Saturday, May 4, 9:00 a.m.

Saturday, August 10, 9:00 a.m.

After attending the course or submitting a YQCA online training certificate, you will be marked complete in the DeKalb 4-H Hub (Fall Fair Checklist)

**This certification does NOT replace the workshop/worksheet requirement.*

Canvas Painting



Under the sea we go to paint with the elements of Art! Join us for a fun Valentine's Day night of painting, and make this undersea adventure. This is open to youth in grades 3-12, but parents are welcome to dive in and paint with their youth.

- **Location:** DeKalb County Office Building (215 E. 9th St. Auburn, IN)
- **Date & Time:** February 14, 2024 6-8 p.m.
- Best suited for youth in Grades 3 & up
- **Cost:** \$15
- Registration closes: February 7
- **Register:** <https://bit.ly/canvassteam24>



P PURDUE UNIVERSITY Extension - 4-H Youth Development
Purdue University is an equal opportunity/equal access/affirmative action institution.

Under the sea we go to paint with the elements of Art! Join us for a fun Valentine's Day night of painting! This undersea adventure is open to youth in grades 3-12, but parents are welcome to dive in and paint with their youth. <https://bit.ly/canvassteam24>

Winter Cancellation Policy

Historically, we have followed schools in regards to meeting and event cancellations. If one school canceled for the day, we canceled all events for that day. However, with schools offering e-learning days, we think they will be quicker to react and cancel.

We certainly care about your safety, but want to be mindful that sometimes the fog fades and the snow is cleared by evening.

Moving forward from this point on, we will use cautious discretion and/or consult with the Sheriff's Department regarding cancellation of DeKalb County 4-H programs, events, activities, and meetings.

2024 4-H ORIENTATION

February 4 - 2:00-4:00 pm
4-H Exhibit Hall (708 S. Union St. Auburn, IN)
Sit down discussion on important 4-H information and a 4-H Leader meet & greet!

**COME READY WITH QUESTIONS!
SNACKS AND DRINKS WILL BE PROVIDED!**

RSVP at (link above)
<https://bit.ly/20244HOrientation>

Are you new to the 4-H program? Or do you need a refresher on 4-H? Well, either way, 4-H Orientation is the meeting for you! We will be sitting down to discuss important 4-H information for the year, and meeting the leaders for your Clubs and Projects. Join us on February 4th from 2:00-4:00 p.m. RSVP here <https://bit.ly/20244HOrientation>



ATTENTION PLEASE!

IMPORTANT CHANGES FOR 2024

Project Name Change
Construction Toy Models is now called Construction Architectural Replica.
Project rules have not changed.

Show Time Changes
Sheep Show - Monday, September 23 at 5:00 pm
Goat Show - Thursday, September 26 at 3:00 pm

Goats & Sheep

Sheep & Goat State ID Day
May 5, 3-4 p.m. - at the Goat Barn

Summer Goats Show
July 13, at Show barn

Goat Workshop
June 23, 1-2:30 p.m. at the petting zoo awning.
Trimming feet and clipping

Goat set up Day
September 15 at 1 p.m.



Sheep and Goat County ID day
June 23, 3-5 p.m. each in own barns

2024 IMPORTANT DATES

January 29, 31, February 5, 7	Go without Going - Your Passport to VR Travel (Join us as we explore the world through virtual reality), 6:00-8:00 p.m. - Exhibit Hall 708 S. Union St. Auburn, IN
February 1	Camp Counselor Applications are due to the Extension Office!
February 4	4-H Orientation - 2:00-4:00 p.m. - Exhibit Hall • 2:00 p.m. - 4-H Information Session, 3:00 p.m.- Meet your leaders!
February 5 and 19	Horse & Pony Club meeting, 7:00 p.m. - Exhibit Hall
February 10	QLC in-person training, 10:00 a.m. - Exhibit Hall Register through the “events” tab in 4-H Online - Required to exhibit Livestock!
February 11	Smithfield Busy Bees Club meeting, 4:00 p.m. - Exhibit Hall
February 12 and 26	Horse & Pony Hippology and Judging Practice, 6:30 p.m. - Exhibit Hall
February 14	Valentine’s Day Canvas Painting Class, 6:00-8:00 p.m. - Exhibit Hall (Must pre-register) DeKalb County 4-H Council meeting, 7:00 p.m. -Exhibit Hall
February 19, 21, 23	Let’s Get Crafty: Minecraft program (learn about architecture and engineering through Minecraft), 6:00-8:00 p.m. - Exhibit Hall 708 S. Union St. Auburn, IN
February 24	Horse & Pony Tack Auction Fundraiser, 5:00 p.m. (doors open at 4:00 p.m.)

Approved Rule Changes for 2024

Static Projects, General Static Project Guidelines, page 19

10. Any Static Project that is considered late for entering information into FairEntry will be able to pay a \$25 late fee per project per 4-H member, to register that project in the system. Anyone wishing to pay the late fee for Static Project must submit their payment by July 8th.

10. All exhibits must be entered into FairEntry for the county of exhibition. This serves as the "drop/add" deadline for 4-H projects. Non-livestock projects must identify classes of exhibition. Those missing the deadline may compete and the highest placing is "blue." Counties should correct mistakes in classes in FairEntry when mistakes are made by 4-H members.

Shooting Sports, page 53

- The 4-H Shooting Sports project teaches safe operation of firearms and archery equipment.
- ~~Seven~~Five projects/~~disciplines~~ are offered at the county level: Air Rifle, Archery, Air Pistol, .22 Rifle, ~~Muzzleloader, Shotgun,~~ and Shooting Sports Project.
- Youth may enroll in one or more project(s)/~~discipline(s)~~ depending on interest, age, and/or experience. ~~The S~~shooting Sports ~~Project~~ is offered as a county 4-H club.
- Interested youth are invited to attend a Shooting Sports information meeting in January.
- ~~3rd Graders may only enroll in the Shooting Sports Project, Air Pistol and Archery before the 4-H sign-up deadline for the current year.~~
- ~~2nd Graders may only enroll in Archery before the 4-H sign-up deadline for the current year.~~

Club

- Club meetings throughout the year (scheduled separately from discipline courses).
- Held at Exhibit Hall, Fairgrounds (regular meetings) with alternate events based on interest.
- Guidance and opportunity for project preparation for entry and demonstration at county and state level fair(s).
- Additional topic/discipline learning, including Outdoor Skills and other topics based upon interest.

Air Rifle (Beginner and Advanced)

- ~~10~~Each ~~an~~Both are an 8-week course, one session per week, in separate 8-week segments (16 weeks total).
- Held at Exhibit Hall, Fairgrounds.
- Equipment, materials, and insurance provided.
- After completion of the Beginner course, first course, second-year members will have may participate in the Advanced course with additional shooting positions, skill instruction, and awards. and distances increased.
- The Advanced course has space limitations, with preference given to those that completed the Beginner course in

prior years and/or those with a demonstrated history of regular attendance.

- Members that complete an equivalent Beginner course in another county/state may be considered for enrollment directly in the Advanced course on a case-by-case evaluation based upon demonstrated competency in safety and beginner marksmanship skills.
- ~~Attending a shooting sports workshop will fulfill the requirement for project completion and allow youth to attend competitions and special events:~~

Archery

- ~~10~~8-week course, one session per week.
- Held at Exhibit Hall, Fairgrounds.
- Equipment, materials, and insurance provided.
- After completion of first course, second-year and beyond members (depending on skill) may bring their own equipment upon instructors approval.
- ~~Attending a shooting sports workshop will fulfill the requirement for project completion and allow youth to attend competitions and special events:~~

Air Pistol (Beginner and Advanced)

- ~~10~~8-week course, one session per week; Beginner and Advanced participate simultaneously in a single 8-week segment.
- Held at Exhibit Hall, Fairgrounds.
- Equipment, materials, and insurance provided.
- After completion of ~~first~~the Beginner course, second-year members ~~will learn different shooting positions~~may participate in the Advanced course with additional shooting positions, skill instruction, and awards.
- Members that complete an equivalent Beginner course in another county/state may be considered for enrollment directly in the Advanced course on a case-by-case evaluation based upon demonstrated competency in safety and beginner marksmanship skills.
- ~~Attending a shooting sports workshop will fulfill the requirement for project completion and allow youth to attend competitions and special events:~~

.22 Rifle

- Must complete ~~one year of both~~ Beginner and Advanced Air Rifle ~~or Air Pistol:~~
- 6-week course, one session per week.
- ~~Equipment, materials, and insurance provided:~~
- Held at Auburn Conservation Club.
- Equipment, materials, and insurance provided.
- Members may bring their own equipment upon instructor approval.

4-H/Youth Development

- ~~Attending a shooting sports workshop will fulfill the requirements for project completion and allow youth to attend competitions and special events.~~

Muzzleloader

- ~~Must complete one year of Air Rifle or Air Pistol.~~
- ~~Equipment, materials, and insurance provided.~~
- ~~Held at 4-H Shooting Sports Range.~~
- ~~Attending a shooting sports workshop will fulfill the requirement for project completion and allow youth to attend competitions and special events.~~ Not currently offered. Future availability dependent on Volunteer and Certified Instructor participation.

Shotgun

- ~~Must complete one year of Air Rifle.~~
- ~~Equipment, materials, and insurance provided.~~
- ~~Held at Auburn Conservation Club.~~
- ~~Attending a shooting sports workshop will fulfill the requirements for project completion and allow youth to attend competitions and special events.~~ Not currently offered. Future availability dependent on Volunteer and Certified Instructor participation.

Shooting Sports Static Project, Exhibit Guidelines, page 54

1. All posters, notebooks, and display boards must include a reference list indicating where information was obtained, giving credit to the original author, ~~to complete the 4-H member's exhibit~~. This reference list should/might include web site links, people and professionals interviewed, books, magazines, etc. It is recommended this reference list be attached to the back of a poster or display board, be the last page of a notebook, or included as part of the display visible to the public. A judge is not to discredit an exhibit for the way references are listed.
2. Posters are to be 22"x28", ~~and~~ displayed horizontally, and placed in a clear plastic sleeve or covered with clear plastic to protect contents. Display boards should be designed to sit on a table using no more than 36" of tabletop space. Space should be left in the lower ~~right hand~~right-hand corner to place an exhibit tag provided by Purdue Extension staff.
3. Live ammunition ~~is not allowed to~~ may not be exhibited (no powder or primer). Firearms or ready ~~-to -shoot bows are not allowed to~~ may not be exhibited. Unstrung bows are ~~permissible~~permitted.
4. An arrow with its arrowhead attached must be displayed in a secure case. An arrowhead without the arrow attached must be displayed in a secure case. An arrow may be displayed unsecured if its arrowhead is removed. Modern broadhead arrows ~~are not allowed to~~ may not be exhibited.

Livestock Projects, page 58

5. All destination declarations must be made at the scales at check-in. All information on Animal Destination Card is final when turned in at check-in unless a member wins

a breed champion or higher in another specie that is not marked for auction. In this case, the member can change their auction designation up to one hour after the completion of the show the animal has won in. Changes need to be initialed by ~~both species-~~ superintendents a parent or guardian. As a courtesy to members, a list of all destinations will be posted in the show barn on Monday. If an error is found the member may request a change up until Wednesday at 4:00 pm. Changes after Wednesday will only be allowed for champions as outlined above. No changes will be made on auction day to any destination.

General Animal Guidelines, page 60-61

5. Pen reservations have been replaced by the online program FairEntry, accessible at FairEntry.com. FairEntry class selection for all fair livestock and Summer Goats is due no later than the published date each year. Late FairEntry entries and/or worksheets will incur a \$50 fee per species per 4-H member. The late fee/pen reservation/ worksheet must be submitted no later than July 8th for Summer Goat or September 15th for Fall Fair. There will be no refund if for any reason an animal is not shown at the fair.

5. All Fall Fair exhibits must be entered into FairEntry for the county of exhibition. This serves as the "drop/add" deadline for 4-H projects. Livestock projects must identify classes of exhibition. Those missing this deadline may exhibit and will have opportunities to receive feedback from the Exhibition Only class for the species. Youth may still participate fully in showmanship classes.

20. ~~No automatic waterers will be allowed in the Beef, Dairy, and Dairy Feeder barns.~~

Dog, Horse & Pony, Beef, Dairy, Dairy Beef, Goat, Poultry, Rabbit, Sheep, Swine (removing the same wording from all)

Project Requirements (for all species)

1. All youth must meet educational requirements by attending one (1) specie specific workshop or complete a specie specific Livestock Record Worksheet. Completed worksheets will be due on the publicized deadline. Online nomination via v2.4HOnline.com with premise ID number is required by stated deadline. Online entry into FairEntry is also required by stated deadline. ~~NO LIVESTOCK WORKSHOP/WORKSHEET—NO FAIRENTRY—NO SHOW!~~

Dairy

4. ~~All dairy members will have the opportunity to sell a dairy product through the auction, providing that it is the only item they sell.~~

Dairy Beef

Animal Identification Requirements, page 69

1. All Dairy Steers and Dairy Feeders must have both testicles banded (castrated/neutered). Dairy Feeders are to be castrated no later than August 1st. Both Dairy Feeders and Dairy Steers must be dehorned. No more than 1/2" of horn will be allowed at fair check-in. All Dairy Steers and Dairy Feeder calves must

4-H/Youth Development

show purebred characteristics of one approved dairy breed. Animals that do not meet purebred characteristics will be reclassified into the appropriate dairy beef cross-class. The approved dairy breeds include Ayrshire, Brown Swiss, Guernsey, Holstein (red and white OR black and white), **Milking Shorthorn** and Jersey. Animals must have the characteristics of that breed as provided by the Dairy Steer and Feeder advisory committee. **An independent sifter or the Dairy Steer and Feeder advisory committee and superintendent reserves the right to disqualify an animal if it doesn't have dairy characteristics. All decisions will be final.**

Weigh-in/ID Day Information, page 70

4. At March/ June ID Days the 4-H member will declare which class the animal will show- dairy beef feeder, dairy beef cross feeder, dairy beef steer, or dairy beef cross steer. **All dairy feeders (dairy cross-feeders) and dairy beef steer (dairy beef cross steer) will be genomically tested to determine breed composition. Testing will be at zero cost to the 4-H member. Testing media may consist of a tissue sample or blood test. The test will identify Dairy Breed-Based Representation (BBR) by the percentage of the following approved dairy beef breeds: Ayrshire, Brown Swiss, Guernsey, Holstein (red and white OR black and white), and Jersey. BBR results are as follows:**

- Dairy BBR at 90% and higher, animals will show in traditional respective dairy beef class
- Dairy BBR results from 45% to 89.9%, animals will show in dairy beef cross-class
- Dairy BBR results 44.9% and lower will show in beef cross-class

The tester, the Dairy Beef Superintendent/4-H Educator and 4-H member representative will verify the sample was from their animal, via signature. Access to the results of genomic testing will be available to the 4-H educator and the Dairy Beef Superintendent. If an animal's BBR results are in a different class than what 4-H member has declared, the 4-H member will be contacted about the BBR results and made aware of the new class the animal is assigned. Animals only need to be tested once. If a feeder is genomically tested one year and comes back the next year, we will use the test from the previous year to determine where your animal will show at the fair.

5. All dairy feeder calves going to auction, or consignment will provide proof of Bovine Respiratory Disease vaccine, **unless the animal is an auction member keep.** You may choose to waive the vaccine, but you must sign a waiver agreeing that the animal will not be allowed to sell in the auction or be consigned to sell. One of the forms will need to be uploaded into FairEntry by September 8. Acceptable documentation will be a veterinarian invoice or receipt of vaccine purchase and date of administration.

Exhibition Guidelines, page 70

6. Dairy Feeders/Dairy Cross Feeders may either be sold in the 4-H auction, sold on the market, or returned to the farm to be brought back to the Fair the following year.

7. There will be 3 1 Dairy Beef Herdsman Awards given to the exhibitors who display the best animal care, care of pens and surrounding area, participates in workshops, participates in barn set-up/clean-up, and knowledge of specie (based on the exhibitor's level).

• A Senior Dairy Beef Herdsman award will be given to a Dairy Beef member in grades 9-12; Intermediate Dairy Beef Herdsman award

who is in grades 6-8; a Junior Dairy Beef herdsman award will be given to a Dairy Beef member in grades 3-5-

- Herdsman will be chosen at the discretion of the specie Superintendent and the Dairy Steer and Feeder advisory committee. Qualities that we will be looking for are members that exhibit great character throughout the year and 4-H functions. Members that are willing to help other 4-H members by helping clean the barn, keeping a tidy area, and overall wanting to promote the dairy beef project.

- The winner of the Herdsmen award will be announced at the 4H Livestock auction prior to the Dairy Beef species at the DeKalb County Fair.

Goat

Grooming Guidelines, page 72

2. Dairy Goats (Does and Wethers) will have no more than ½ inch of horn by check-in for the Summer Doe show or the Fall Fair Market Wether show.

Market Wether & Market Meat Doe Classes, page 74

2. A Champion and Reserve Champion will be awarded for each of the above classes in each show category. Ribbons will be awarded to all Champions and Reserve Champions. **In the Grand Drive for Dairy and Meat type market animals, the top five (5) will be awarded placing per each category.**

Poultry

Exhibition Information, page 75

1. There are fifteen (15) categories available to exhibit in at the Fair. You may show a total of nine (9) exhibits in any combination of the 15 categories. **You may only show one (1) exhibit per class.** The classes are listed below.

7. Poultry and Waterfowl in the following **Exhibition** categories along with Eggs (Bantams, Large Fowl, Ducks, Geese, Turkeys, Exotics and Pigeons) can show **one (1) per class in any combination.** **Refer to complete list of Exhibition birds.**

9. Exhibitor must be able to handle all birds **because they will be shown in the show ring, as they show in the show ring, with possibility of Except for Pigeon and Exotic, turkeys, geese and other large species also which would be judged in the poultry barn, due to flight risk.** If a member has two (2) or more birds in the same class, they may have another 4-H member show one (1) of the birds for them.

11. There will be a Herdsman Award given to the exhibitor who displays the best animal care, care of pens and surrounding area, participates in workshops, participates in barn set-up/clean-up, and knowledge of specie (based on the exhibitor's level). Herdsman will be chosen at the discretion of the specie Superintendent and the specie Committee.

Showmanship Classes

1. There will be a Poultry Showmanship for Junior (grades 3-5), Intermediate (grades 6-8), and Senior (grades 9-12) 4-H members. A written quiz taken the poultry show day to test the exhibitors knowledge of their bird, exhibitors appearance and attitude,

4-H/Youth Development

exhibitors bird's cleanliness, and how the exhibitor handles their bird at the table will all be at 76 the decision of the judge. You must sign-up for Showmanship In FairEntry or in the Poultry barn on Monday of Fair by 5:00 pm.Livestock Auction, page 81-82

2. Each 4-H livestock member may sell any one (1) of the following through the auction at the County Fall Fair: market lamb, market barrow (220-290 lbs.), beef market project (steer or heifer), dairy steer, dairy feeder, dairy product, rabbit (roaster or stewer), goat market project (dairy or meat), poultry (broiler, roaster, commercial hen, commercial pullet, commercial turkey, commercial heavy weight duck or commercial heavy weight goose). If a 4-H animal was not shown (i.e., animal becomes injured, ill, unruly, is sent home, etc.), it will not be eligible to go through the Auction. **No animal that was shown in an "exhibition only" class may go through the auction.** In addition, other non-livestock entities may auction an item that has prior approval by the 4-H Council with funds going to an approved 4-H purpose.

8. All dairy members will have the opportunity to sell a dairy product through the auction, providing that it is the only item they sell.



M N 4-H

is excited to announce that we will be having a FARM theme this year!

We generally have meetings from early May through September. We are still working on exact dates so watch for future mailings of Extension Edge for those!

Our Club dues are \$5 per child and project manuals will be available at our first meeting. We will be at the 4-H Orientation on Feb 4. Be on the lookout for a "welcome" email from us.

We look forward to meeting with you all!

CLOVER HUNT

Find the black & white 4-H clover logo hidden somewhere within this newsletter. To win the 2024 prize (Clover Wallet, 4-H Sticker, Hat, Gold Button, and Thermos cup), email Effie



(campb314@purdue.edu) with the correct description of it's location and have the chance to win this month's prize. Winner will be announced on February 19. Contest open to Mini 4-H and regular 4-H members ONLY. Prize will be available for pick-up at the Extension Office once winner has been notified.



Sample only

4-H Enrollment

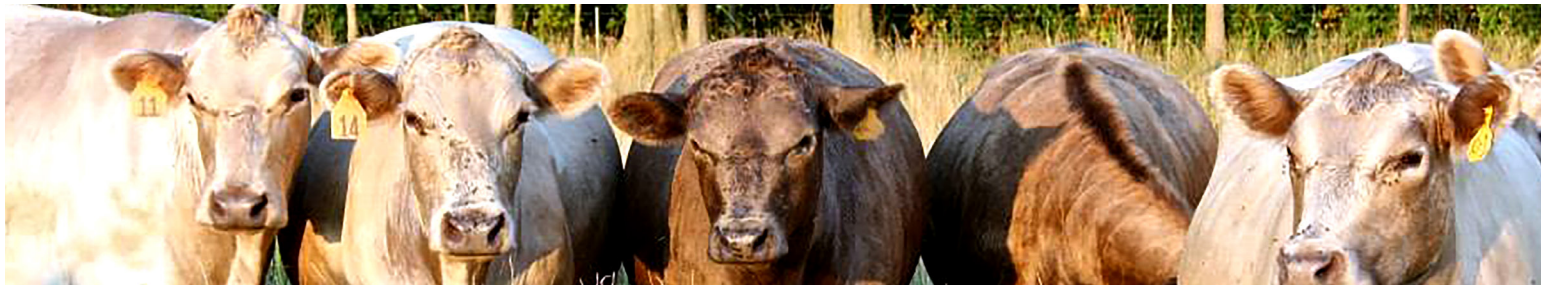


If you missed the enrollment deadline of January 15th, it's not too late to sign up for 2024. Go to v2.4honline.com to enroll and pay the fee.

Cost: \$25 4-H Program Fee* (Grades 3-12). There is no charge for Mini 4-H (K-2nd Grade), only \$5 for club dues at their first meeting in the spring. The 4-H Program Fee is non-refundable. The fee is assessed at the time of registration and can be paid online by credit/debit card, or paid at the Extension Office by cash, check or money order (Extension Office cannot process credit cards).

*\$25 each for up to three children, \$10 for each additional child.

If you have questions, call the Extension Office at 260-925-2562



LIVESTOCK NEWS

2024 Beef/Dairy Steers

Beef Heifers ID/WEIGH-IN

Saturday, April 13, 8-10 a.m.

MAY 15 DEADLINE

ALL Beef Steers, Registered & Unregistered Heifers, Dairy Steers, Horse & Pony, Draft Animals, and **STATE FAIR ELIGIBLE ANIMALS' MUST (excluding Poultry and Rabbit)** be entered into 4HOnline.

Rabbits

DeKalb 4-H Hub

Your go-to resource for everything Dekalb 4-H!



WHAT IS ON THE HUB?

- FALL FAIR CHECKLIST- SEE WHAT YOU STILL NEED TO COMPLETE TO BE ELIGIBLE TO EXHIBIT
- SUMMER JUDGING CHECKLIST - SEE WHAT YOU STILL NEED TO COMPLETE TO BE ELIGIBLE TO EXHIBIT
- 10 YEAR MEMBER TO-DO LIST! (NEW FOR 2024)
- LIST OF IMPORTANT DATES/WORKSHOPS
- MONTHLY NEWSLETTER
- GENERAL RECORD SHEET
- 4-H HANDBOOK
- APPLICATIONS FOR EVENTS/TRIPS
- 4-H FAMILY GUIDE, 4-H PROJECT MAGAZINE
- INSTRUCTIONS FOR 4-H ONLINE AND FAIR ENTRY
- LIST OF IMPORTANT WEBSITES
- ALL LIVESTOCK WORKSHEETS!

Rabbit Workshop

March 3, 2-3 p.m. -

Exhibit Hall

Parent meeting and rabbit stations

Please come with questions

Rabbit ID Day

June 30, 2-4 p.m. at the

Rabbit Barn

Showmanship,

Breed ID

July 28, 2-3 p.m.

Exhibit Hall

Bring one rabbit and towel

Barn Set Up and

Clean Up

August 25, starts at Noon

Show remark cards

Liter Class

Fryers

Meat pens

Rabbit Remind

send text to

81010

text this message

@dekabhops



USE THE LINK OR SCAN THE QR CODE WITH YOUR PHONE CAMERA
[HTTPS://BIT.LY/DEKALB4HHUB](https://bit.ly/DeKalb4HHub)



LET'S GET CRAFTY
MINECRAFT PROGRAM

Grades 5-8
February 19, 21, 23
6:00-8:00 pm
708 S. Union St. Auburn, IN

REGISTER NOW! LINK ABOVE

Learn about the basics of Engineering and Architecture using Minecraft!



Learning is always more fun using games! Learning about the basics of engineering and architecture using Minecraft? That's bound to be an amazing time. Youth in grades 5-8, join us over 3 sessions on February 19, 21, and 23 from 6:00-8:00 p.m. for Let's Get Crafty! Register at <https://bit.ly/24LetsGetCrafty>

FALL FAIR - BECK'S
T-SHIRT SURVEY

FALL FAIR LIVESTOCK EXHIBITORS! PLEASE ENTER YOUR T-SHIRT SIZES BY MARCH 1! IF YOU HAVE MULTIPLE YOUTH SHOWING LIVESTOCK IN YOUR FAMILY, PLEASE FILL OUT THE FORM 1 TIME FOR EACH MEMBER



STAFF:

Elysia Rodgers
 eberry@purdue.edu

Angela Sorg
 asorg18@purdue.edu

Effie Campbell
 campb314@purdue.edu

Brenda Cureton
 bcureton@purdue.edu

Heather Waldon
 waldenh@purdue.edu



YOU CAN HELP PURDUE'S BROADBAND TEAM!



The Problem

- The federal Broadband Equity, Adoption, and Deployment (BEAD) program is deploying broadband funds.
- Indiana is receiving close to \$870 million from the federal government starting mid to late 2024.
- A Federal Communications Commission (FCC) map will dictate where these funds go.

The Solution

- The Purdue Broadband Team's (PBT) goal is to make make Indiana's broadband map more accurate and help with broadband adoption.
- PBT will spread the word on the following resources:

Share validating tool for addresses and internet service on the FCC map.	Learning more about the Indiana Connectivity Program (ICP).	Share tool for speed tests or reporting a lack of connectivity at your address.	Learning more about the Affordable Connectivity Program (ACP).

Purdue University is an equal opportunity/equal access/affirmative action institution.

Purdue University Cooperative Extension Service is an Affirmative Action, Equal Access/Equal Opportunity institution.



Non-Profit Org
 U S Postage Paid
 Auburn in 46706
 Permit No. 80

RETURN SERVICE REQUESTED

County Office Building
 215 East 9th Street—Ste. 300
 Auburn, IN 46706