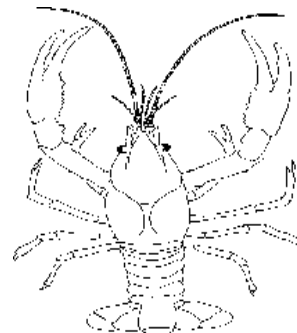


The Leading Edge



Northern Crayfish have a greenish color with orange highlights, especially on their largest claws.

Common name: Northern Crayfish

Scientific name: *Orconectes virilis*

Production potential: Easy

Marketing potential: Potential: Moderate
Size: 7 - 13 per pound
Market: Bait, food

Temperature Requirements: Growing: 75-85°F
Spawning: 60-70°F
Lethal: 95°F or more

Feed requirements: Protein: 30%
Fat: 4-6%

Spawning requirements: Northern crayfish spawn March-May. Females lay from 200-500 eggs, which hatch in three to ten days.

Most common production systems: Ponds

September 13, 1996

Publication Coordinator: Nancy F. Riggs

Designer: Larry Ecker

Publication No. IL-IN-SG-96-7

To Reprint, or to request additional copies, please contact

Illinois-Indiana Sea Grant Aquaculture Extension Specialist at: 317-494-6264 or
lswann@ansc.purdue.edu




Sea Grant
ILLINOIS - INDIANA

The Leading Edge Tip Sheet Series is produced by the Illinois-Indiana Sea Grant program, Phillip E. Pope, Director. Illinois-Indiana Sea Grant is a joint federal and state program of Purdue University, West Lafayette, Indiana, and the University of Illinois at Urbana-Champaign. Funding is received from the National Sea Grant College Program, National Oceanic and Atmospheric Administration, and the U.S. Department of Commerce. The U.S. Government is authorized to reproduce and distribute reprints for government purposes notwithstanding any copyright that may appear.

Issued furtherance of the Cooperative Extension Service of both Purdue University and the University of Illinois at Urbana Champaign, Purdue University and the University of Illinois offers equal opportunities in programs of employment.