



Wildlife ID and Equipment Flash Cards

Authors: Rod N. Williams, Dept. of Forestry & Natural Resources
Natalie Carroll, Dept. of Youth Development & Agricultural Education
*Photos by R. Williams unless otherwise noted

The flash cards provided within this publication will help students identify common Indiana wildlife species and equipment for the Indiana Wildlife Habitat Evaluation Program (WHEP)–Animal Identification event. All of the species listed in this publication are found in Indiana and are either listed in the national handbook or have been added to the state contest (species not in the national list are indicated by an asterisk).

Studies have shown that repetition is the most effective form of learning. Flash cards remain one of the simplest and most successful tools for engaging students in the learning process. Flash cards allow students to take advantage of brief periods of time throughout the day (e.g., car rides) because they can easily be taken anywhere. Flash cards also enable students to “compete” with themselves or against peers in a group setting.

Use the following pages to make flash cards by cutting the dotted lines and folding the papers where indicated. Students are encouraged to

print these cards using a color printer. Preprinted flash card sets are available for purchase at: Purdue Extension–The Education Store, www.the-education-store.com.

THE CONTEST

Preserved specimens (not pictures) will be used for the Indiana Wildlife Habitat Evaluation Program (WHEP) Career Development Event. While most specimens retain their coloration for decades, some may fade over short periods of time. To ensure students are prepared for these subtle changes, flash cards were developed using pictures of specimens that will be displayed on the day of the contest. Information about how to identify a particular species is listed on the back of each flash card. The most important characteristics used for identification are always listed first. Students will only be responsible for identifying specimens shown in the photos (i.e., generally adult males). Students will be allowed to gently handle specimens to view important features needed for positive identification. Students will be required to identify 50 wildlife species or associated wildlife equipment from among a total of 88 listed on the attached cards. Students will have 30 seconds to record an answer on the top of the scantron sheet before moving to the next station.

For more information, visit:
www.four-h.purdue.edu/whep



Fold

Cut



American Kestrel

Characteristics

Two black stripes on face, reddish-brown back and tail, hooked beak, sharp talons

Cut



American Robin

Characteristics

Brick-red breast and belly, yellow beak, grayish back with darker head and tail

Cut



American Woodcock

Characteristics

Reddish-brown breast and belly, long beak, horizontal dark bars on head

Cut

Fold

Cut



Blue-winged Teal

Characteristics

Blue forewing, crescent-shaped white patch on face, small for a duck

Cut



Broad-winged Hawk

Characteristics

Broad black and white bands on tail, last white band broader than others; hooked beak; sharp talons

Cut



Brown Thrasher

Characteristics

Reddish-brown on head, back, and tail; heavily streaked belly; long tail

Cut

Fold

Cut



Canada Goose

Characteristics

Black head and neck,
white “chin strap”

Cut



Common Nighthawk

Characteristics

White bar across wings,
white throat, small beak

Cut



Eastern Bluebird

Characteristics

Deep blue along head, back, and tail;
reddish-brown along throat and breast;
white belly

Cut

Fold

Cut



European Starling

Characteristics

Iridescent black feathers;
body feathers tipped with white;
short, square tail

Cut



Grasshopper Sparrow

Characteristics

Breast plain and dull brown (buff-colored);
dark head with light, buff-colored median stripe

Cut



Great Horned Owl

Characteristics

Large ear tufts, white throat,
hooked beak, sharp talons

Cut

Fold

Cut



Hairy Woodpecker

Characteristics

Back black except for white center stripe,
outer tail feathers white,
red patch on back of neck

Cut



House Finch

Characteristics

Front of head, throat, and breast reddish-purple;
reddish-purple spot on rump;
streaks on sides of belly

Cut



House Sparrow

Characteristics

Black throat, rusty-brown neck,
gray on top of head and belly

Cut

Fold

Cut



House Wren

Characteristics

Black barring on tail,
small size, brownish overall

Cut



Mallard

Characteristics

Metallic-green head, white neck ring,
reddish-brown breast

Cut



Mourning Dove

Characteristics

Long, pointed tail; small head;
gray body; rosy-colored breast

Cut

Fold

Cut



Northern Bobwhite

Characteristics

White throat and eye stripe,
sides striped reddish-brown,
chunky body

Cut



Northern Flicker

Characteristics

Black bib, black spots on belly,
shafts of feathers yellow, black barring on back,
red patch on back of neck

Cut



Northern Harrier

Characteristics

Large white spot at base of tail;
long, banded tail; brownish overall;
hooked beak; sharp talons

Cut

Fold

Cut



Ovenbird

Characteristics

Orange head stripe bordered by black,
breast with reddish-brown streaks or spots

Cut



Red-eyed Vireo

Characteristics

Gray head with white eye stripe,
small hook on beak,
olive body with gray belly

Cut



Red-tailed Hawk

Characteristics

Tail red on upper surface,
reddish-brown spots across belly,
hooked beak and sharp talons

Cut

Fold

Cut



Red-winged Blackbird

Characteristics

Body black, red and yellow patches on forewing,
beak straight and pointed

Cut



Ring-necked Pheasant

Characteristics

Long, pointed tail with black barring;
white neck ring; iridescent coloring on head

Cut



Rock Dove (Pigeon)

Characteristics

Multicolored feathers,
neck darker than back,
small head

Cut

Fold

Cut



Ruby-throated Hummingbird

Characteristics

Small body;
long, slender beak;
iridescent throat

Cut



Ruffed Grouse

Characteristics

Tail banded with wide terminal band,
black ruffs on sides of neck,
chicken-like in appearance

Cut



Rufous-sided Towhee

Characteristics

Sides reddish-brown,
black head and throat,
white outer tail feathers

Cut

Fold

Cut



Song Sparrow

Characteristics

Large spot on center of breast,
spotting or streaking along side of breast,
belly whitish, back brownish

Cut



Wild Turkey

Characteristics

Large size, naked head,
modified feathers (beard) on breast,
iridescent body feathers

Cut



Wood Duck

Characteristics

Glossy iridescent body,
head with large crest,
reddish-brown breast

Cut

Cut



Yellow-rumped Warbler

Characteristics

Yellow rump, yellow throat,
yellow crown, black breast

Cut



Beaver

Characteristics

Large, broad, and flattened tail;
fur brown and thick; hind feet webbed

Cut



Big Brown Bat

Characteristics

Black wings, brown fur,
tail membrane without fur

Cut

Fold

Fold

Cut



Bobcat

Characteristics

Tail short and black only at tip,
ear tufts short,
white spot behind each ear

Cut



Coyote

Characteristics

Resembles medium-sized dog,
body grizzled-gray or reddish-gray,
tail often with black tip

Cut



Eastern Cottontail

Characteristics

Large white hind feet; long narrow ears;
cotton-ball shaped tail, white below;
neck rusty-reddish color;
body fur speckled brownish and grayish

Cut

Fold

Cut



Eastern Fox Squirrel

Characteristics

Body fur rusty orange mixed with gray,
long tail with orange-tipped fur,
belly orange

Cut



Eastern Gray Squirrel

Characteristics

Body fur grayish,
long tail with white-tipped fur,
belly whitish

Cut



Eastern Mole

Characteristics

Huge front feet and claws;
short, naked tail;
soft, “reversible” body fur;
no external ears; eyes inconspicuous

Cut

Fold

Cut



Mink

Characteristics

Tail long and slightly bushy;
rich, dark-brown fur;
patch of white fur on chin

Cut



Muskrat

Characteristics

Body fur rich, dark brown;
tail long, naked, and compressed from side to side

Cut



Raccoon

Characteristics

Tail with alternating rings of yellowish-white and
black,
body fur "salt and peppered,"
black mask over eyes

Cut

Fold

Cut



Red Squirrel

Characteristics

Belly white with black lines along sides,
tail rusty-red tipped in black

Cut



Short-tailed Shrew

Characteristics

Short, furred tail;
small eyes, ears, and feet;
small size; pointed snout

Cut



Southern Flying Squirrel

Characteristics

Tail broad and smoothly furred;
folded layer of loose skin between front and hind legs;
soft and silky fur—grayish above; white belly

Cut

Fold

Cut



Virginia Opossum

Characteristics

Long, naked, round tail;
white face with black, leathery ears

Cut



White-tailed Deer

Characteristics

Fawns reddish-brown with white spots,
white undersides, feet with hooves

Cut



Woodchuck

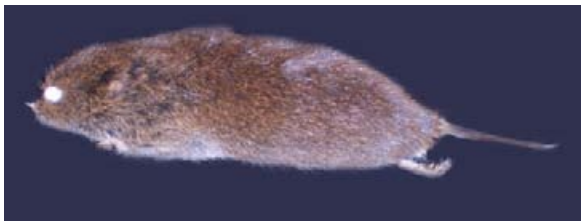
Characteristics

Body fur grizzled, yellowish-brown, and frosted at tips;
legs and feet dark brown or black; heavy-bodied

Cut

Fold

Cut



Meadow Vole

Characteristics

Body fur dark brown, belly silvery-gray

Cut



American Toad

Characteristics

Large warts,
1–2 warts per dark spot,
black pigmentation on belly

Cut



Black Rat Snake

Characteristics

Body mostly dark with lighter spaces between scales,
some blotches visible on back,
belly marked with light and dark squares

Cut

Fold

Cut



Bluegill

Characteristics

Black ear flap;
long, pointed pectoral fin;
small mouth

Cut



Box Turtle

Characteristics

High, dome-like shell;
black and yellow streaking on shell

Cut



Bullfrog

Characteristics

Large size,
no dorso-lateral ridge,
ridge around eardrum

Cut

Fold



Channel Catfish

Characteristics

Barbels (whiskers) on face,
spots on sides, forked tail



Copperhead

Characteristics

Dark bands form hour-glass shape,
reddish-brown body,
triangular-shaped head,
deep facial pits beneath nostril



Crappie

Characteristics

Deep, compressed body;
white body with dark spots on side and on fins

Cut

Cut

Cut

Cut

Fold

Cut



Creek Chub

Characteristics

Dark spot at base of dorsal fin,
smooth scales

Cut



Eastern Newt

Characteristics

Rough skin;
numerous small, black spots on back and sides;
no scales or claws; laterally compressed tail

Cut



Fence Lizard

Characteristics

Spiny scales,
long toes with small claws, long tail

Cut

Fold

Cut



Five-lined Skink

Characteristics

Smooth, shiny scales;
long toes with small claws; long tail

Cut



Garter Snake

Characteristics

Three longitudinal stripes along body,
small head, plain belly

Cut



Largemouth Bass

Characteristics

Large mouth; whitish body with
broad, dark stripe along side

Cut

Fold

Cut



Northern Leopard Frog

Characteristics

Large spots along head and back,
prominent dorso-lateral ridge

Cut



Painted Turtle

Characteristics

Smooth, flattened shell;
greenish-yellow spot on each side of head; short tail

Cut



Red-backed Salamander

Characteristics

Reddish-yellow stripe down back and tail,
small size, no scales or claws

Cut

Fold

Cut



Snapping Turtle

Characteristics

Large head, long tail,
shell with prominent ridges

Cut



Spring Peeper

Characteristics

Back with a dark "X" pattern,
small size, small toepads

Cut



Tiger Salamander

Characteristics

Dark body with large, yellow spots on back,
side, and belly; no scales or claws

Cut

Cut



WILDLIFE EQUIPMENT

Live trap

Fold

Cut



WILDLIFE EQUIPMENT

Hoop net

Cut



WILDLIFE EQUIPMENT

Minnow trap

Cut

Cut

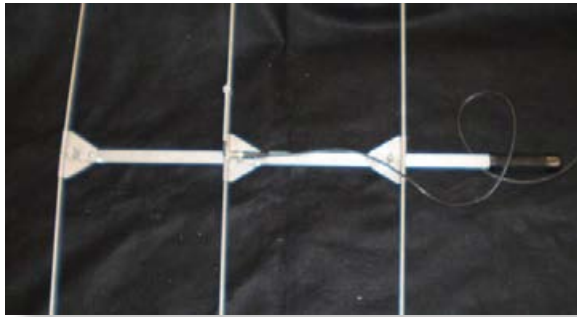


WILDLIFE EQUIPMENT

Telemetry receiver

Fold

Cut



WILDLIFE EQUIPMENT

Telemetry antenna

Cut



WILDLIFE EQUIPMENT

Transmitter/collar

Cut

Cut



WILDLIFE EQUIPMENT

GPS unit

Fold

Cut



WILDLIFE EQUIPMENT

Pesola scale

Cut



WILDLIFE EQUIPMENT

Calipers

Cut

Fold

Cut



WILDLIFE EQUIPMENT

Snake tongs

Cut



WILDLIFE EQUIPMENT

Ear tags

Cut



WILDLIFE EQUIPMENT

Pneumatic dart gun

Cut

Cut

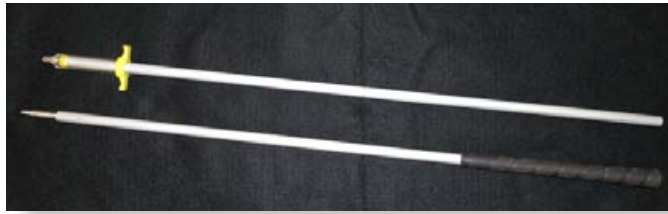


WILDLIFE EQUIPMENT

Chemical immobilization darts

Fold

Cut



WILDLIFE EQUIPMENT

Jabstick

Cut



WILDLIFE EQUIPMENT

Leg bands

Cut

Cut



Fold

WILDLIFE EQUIPMENT

Rocket net

Cut

Cut

Cut



New 11/10

It is the policy of the Purdue University Cooperative Extension Service that all persons have equal opportunity and access to its educational programs, services, activities, and facilities without regard to race, religion, color, sex, age, national origin or ancestry, marital status, parental status, sexual orientation, disability or status as a veteran. Purdue University is an Affirmative Action institution. This material may be available in alternative formats.

PURDUE
UNIVERSITY

Order or download materials at the *Purdue Extension*
Education Store • www.the-education-store.com

Purdue Extension
Knowledge to Go
1-888-EXT-INFO