

Would You Eat This Apple?

The reality is that diseases and insects destroy fruit crops. Responsible pesticide use is often the only way to prevent huge losses and inedible fruit.

Purdue Extension experts help growers responsibly manage their crops to grow fruit we all would eat.

Most people wouldn't.



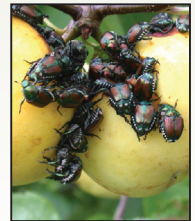
INSECTS



Codling moth



Plum curculio



Japanese beetle

DISEASES



Black rot



Bitter rot



Fire blight



Scab