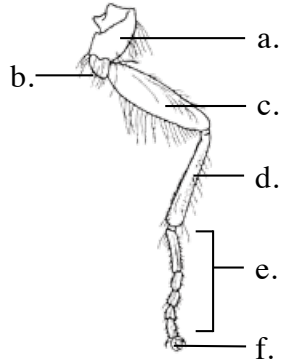


Leg and Wing

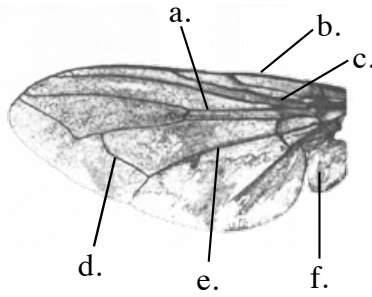
Match the following segments of the insect leg illustrated.

- ___ coxa
- ___ trochanter
- ___ femur
- ___ tibia
- ___ tarsi
- ___ pretarsus



Match the venation of the insect wing illustrated.

- ___ costa
- c. radius
- ___ media
- ___ cubitus
- ___ jugal
- ___ cross vein



Name _____

Number of insects in collection _____

Number of orders in collection _____

Number of families in collection _____

Number of new specimens added this year _____

Improvements in my collection that I intend to make for next year

Cut on dashed line