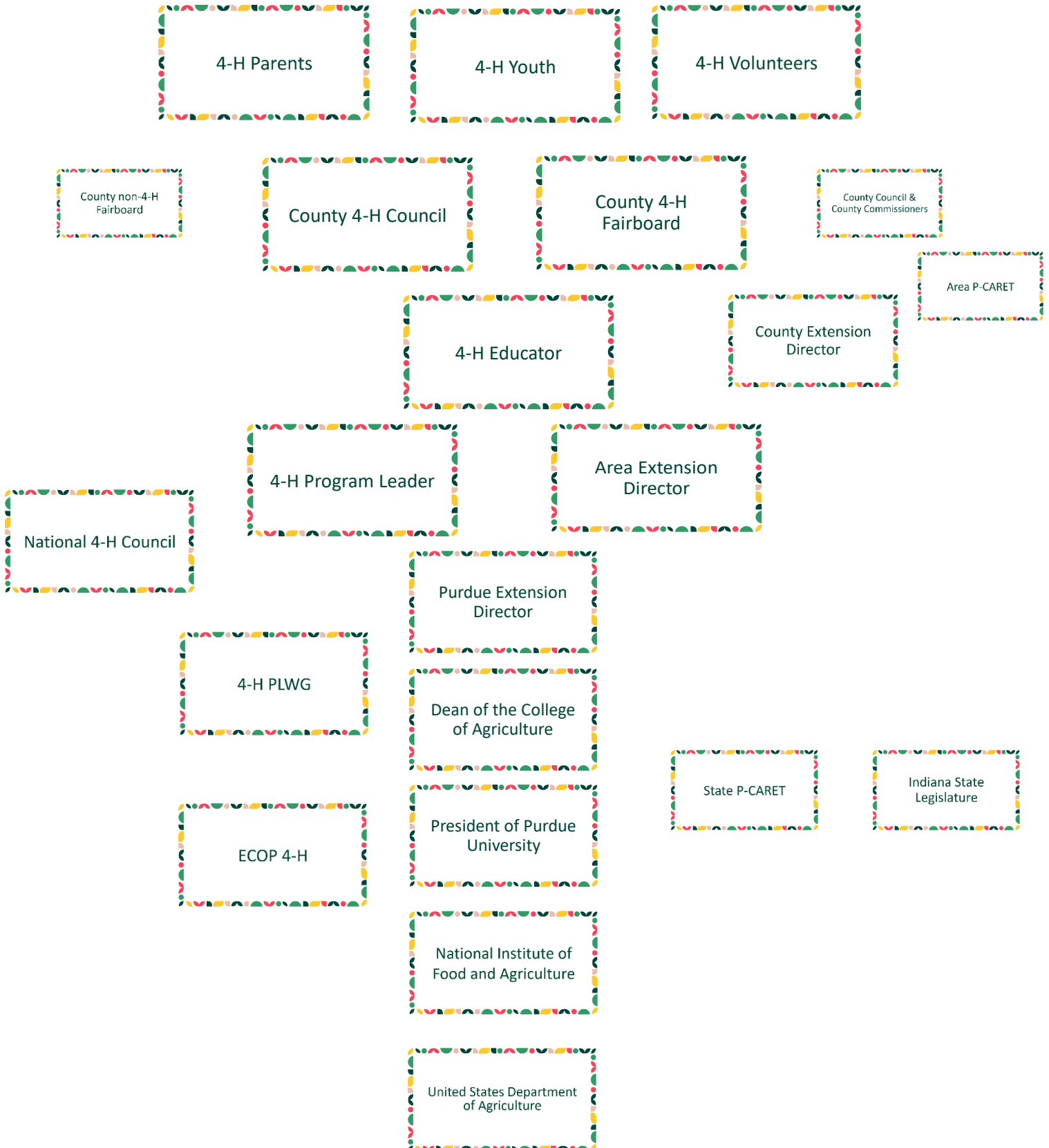


# Indiana 4-H Structure



# Indiana 4-H Structure

The larger blocks represent individuals or organizations included in the 4-H Program's chain of command with each level in the hierarchy reporting to the one below it in the graphic.

The Indiana 4-H Program decision authority hierarchy ends at the State 4-H Program Leader.

The smaller blocks at the county and lower levels represent organizations that support, guide and provide funding for the 4-H Program, but may not be a part of the chain of command. These organizations include:

## County:

- County Council and County Commissioners- local funding partner.
- County non-4-H Fairboard- provide venue for 4-H exhibition and may provide financial support to the county 4-H Program.
  - MOU recommended between this organization and the county 4-H Program and county 4-H Council.
- Area P-CARET- advisory group of volunteers and Extension educators to serve as a voice for Extension needs in the community.

## State

- State P-CARET- a volunteer group of Indiana residents that advocate for and promote Purdue Agriculture's mission and vision at the local, state and national level.
  - [https://extension.purdue.edu/purdue\\_caret/index.html](https://extension.purdue.edu/purdue_caret/index.html)
- Indiana State Legislature- state funding partner.

## National

- United States Department of Agriculture (USDA)- federal funding partner.
  - Houses NIFA
- National Institute of Food and Agriculture (NIFA)- one of four USDA agencies that make up the Research, Education and Economics mission area.
  - provides leadership and funding for programs that advance agriculture-related sciences.
  - Houses the Division of Youth and 4-H
- National 4-H Council- a private, non-profit organization that supports national fundraising efforts and 4-H opportunities.
- ECOP 4-H- The 4-H Leadership Committee of the Extension Committee on Organization and Policy (ECOP) which is the representative leadership and governing body of Cooperative Extension.
  - Facilitate a strategic and systematic response to critical challenges and opportunities in front of 4-H, helping define a coordinated approach to the implementation of the national 4-H mission and vision.
  - <https://www.nae4hydp.org/news/news.asp?id=467838>
- 4-H Program Leaders Working Group (4-H PLWG)- national group of representative program leaders and national partners (National 4-H Council and USDA-NIFA) to provide direction, management and coordinator for all national 4-H processes, activities and events.