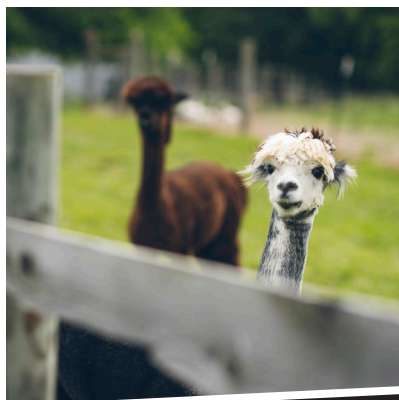


INDIANA SMALL FARM CONFERENCE

2025

Bringing together small-scale farmers for guidance, networking and expert information to help them succeed since 2013.



Keynote Speaker:
Clarenda "Farmer Cee" Stanley



SF

THANK YOU, SPONSORS!

OVERALL SPONSOR



GOLD SPONSOR



SILVER SPONSORS



INDIANA ORGANIC NETWORK

The award is USDA-NIFA ORG 2023-51106-40947:
Empowering Indiana's Organic Farmers: Assessing Regional
and Farm Scale Soil Health with a Farmer Network.



This material is based upon work supported by USDA-NIFA
under Award Number 2023-70027-4044.



Welcome to Purdue Extension's 13th Annual Indiana Small Farm Conference!

This conference is made possible through the generous support of the sponsoring organizations listed on the previous page. Special thanks to Bernie Engel, Glenn W. Sample Dean of Agriculture; Ron Turco, associate dean and director of agricultural research and graduate education; and Angela Abbott, interim associate dean and director Purdue Extension, for supporting Indiana's small farms and sustainable agriculture efforts. Lastly, the Indiana Small Farm Conference would not be possible without continued support and participation from you, Indiana's small-and diversified-farmer producers and professionals.

INDIANA SMALL FARM CONFERENCE COMMITTEE

Amy Thompson (co-chair)
 Laura Ingwell (co-chair)
 Ashley Adair
 Richard Beckort
 Cindy Black
 Amanda Bradshaw Burks
 Phil Cox
 Olivia De Young
 Melinda Duckett

Emily Evers
 Jayde Grisham
 Sarah Hanson
 Jeff Hermes
 Mike Hoopengardner
 Julie Huetteman
 Mathias Ingle
 Joan Klimek
 Emily Kresca

Rebecca Lies
 Karen Mitchell
 Jeff Pell
 Heidi Potter
 Brad Sewell
 Nathan Shoaf
 James Wolff

CONFERENCE AT A GLANCE

Conference information	5
Keynote speaker	7
Sessions schedule overview	8
Session descriptions	10

Program Editor:
 Charles Wineland

Program Designer:
 Tim Thompson

On behalf of Purdue Agriculture, Agricultural Research at Purdue, and Purdue Extension, we are delighted to welcome you to the 13th Annual Indiana Small Farm Conference!

It's an honor to host this event and help you advance small-farm production and profitability. We are thankful that this event has continued through the years and appreciate all of your involvement over the past 13 years.

Purdue University's College of Agriculture proudly serves a diversity of Indiana farms. We're excited to see growth in small and urban farms — highly entrepreneurial areas of agriculture powered by passionate producers, exciting ideas and bright futures. Purdue researchers, specialists and Extension educators combine leading-edge science and locally delivered programs to help you capitalize on opportunities for years to come.

At this conference you'll hear from many of our professionals firsthand, along with industry experts and fellow small-farm producers. With a variety of sessions, the trade show and networking opportunities, the schedule has something for everyone. We're especially excited about a new session dedicated to transitioning to organic production. We're also thrilled to continue sessions geared toward niche opportunities, urban agriculture, farmland access and succession, flower production, and the return of a facilitated networking luncheon.



Want to explore additional resources and stay up to date on Purdue Agriculture's work?

- Visit your county Purdue Extension website
extension.purdue.edu
- Visit Purdue Extension's Small Farm website
purdue.edu/dffs/smallfarms
- Visit Purdue Extension's Diversified Farming and Food Systems website
purdue.edu/dffs
- Visit the Agricultural Research at Purdue website
ag.purdue.edu/arp

Please join us in thanking the conference committee for its creativity, dedication and hard work to host this event and all those who work hard to keep small-farm producers on backroads and busy streets connected to expert information and each other.

HAVE A GREAT CONFERENCE!

Bernie Engel, Ph.D.
Glenn W Sample Dean of Agriculture,
Purdue University

Ronald Turco, Ph.D.
Associate Dean Ag Research and
Graduate Education

Angela Abbott, Ph.D.
Interim Associate Dean and Interim
Director Purdue Extension

CONFERENCE INFORMATION

Surveys

Thank you for attending the 2025 Indiana Small Farm Conference. We are required to report race, ethnicity, and gender of program participants to the U.S. Department of Agriculture (USDA). Only total numbers across all programs are reported so USDA will not be able to identify your individual responses. Your responses are voluntary and help Purdue Extension improve its programming. Thank you for assisting us with this request.



Scan this QR code to complete the demographic survey.

After the conference we will invite you to take a survey to contribute your feedback and suggestions. Please take a moment to complete the survey, once received, as it will impact the future of the Indiana Small Farm Conference. Your participation is voluntary and confidential.

Social Media

We would love for you to share your experiences at the 2025 Indiana Small Farm Conference on social media using the hashtag **#IndianaSFC**.

Connect with us to stay up to date about next year's conference and other news!



Facebook - **@PurdueExtensionDFFS**



Instagram - **@PurdueDFFS**

Questions?

Contact Amy Thompson

afthompson@purdue.edu

(765) 496-1930

purdue.edu/dffs/smallfarms/about-us/



CONFERENCE MAP

HENDRICKS COUNTY
4-H FAIRGROUNDS AND
CONFERENCE COMPLEX



KEYNOTE SPEAKER



Clarenda "Farmer Cee" Stanley

**TUESDAY, MARCH 4, 2025, 1:15-2:15 P.M. EST,
NORTH AND SOUTH HALLS**

Keynote Address: *Build the Brand, Cultivate the Land*

Clarenda "Farmer Cee" Stanley is the founding CEO of Green Heffa Farms, a Certified B Corp dedicated to harnessing the healing and nourishing power of nature. The farm cultivates more than 40 varieties of herbs and medicinal plants and is renowned for its unique loose-leaf herbal tea blends that promote wellness. Farmer Cee's multidisciplinary expertise, encompassing both business acumen and a profound understanding of sustainable agriculture, has solidified her position as a trailblazer in the industry.

FACILITATED NETWORKING LUNCHEON

Wednesday, March 5, 2025, 12-2:15 p.m., North and South Halls

We will have an organized yet relaxed opportunity for you to engage and network with your fellow farmers, researchers, agency personnel and others. Grab a boxed lunch and join a group that aligns with your interests!

Our designated tables will cover a range of subjects and topics, including farming segments (livestock, vegetables, fruits), small farm research needs, climate change, beginning farmers and more. Keep an eye out for directional signage as you enter the North/South Hall for lunch and stay tuned for instructions to "rotate" around the tables. Tables will rotate every 15 minutes for a total of five rotations.

Note: All times listed in the program are Eastern Standard Time.

SESSIONS OVERVIEW

TUESDAY, MARCH 4		Hendricks County 4-H Fairgrounds and Conference Complex			
8:00 –	Conference Registration				
	CONFERENCE ROOM	NORTH HALL	SOUTH HALL	CLASSROOM B-C	CLASSROOM A
8:45 – 9:45	Urban Ag	Vegetables	Business	Livestock	Farmland Access and Succession
	The Art and Skill of Urban Beekeeping	Crop Complexity Impacts Insect Dynamics in High Tunnel Systems	Price It Right: Smart Pricing Strategies with HortCalculator	Small Ruminant Secrets: Strategies for Thriving Herds	Future of Indiana Farmland – Assessment and Conservation
	Ross Harding, Beekeepers of Indiana	Allison Zablah, Purdue ENTM	Ariana Torres and Jean Zavala, Purdue Horticulture and Landscape Architecture	Sara Dzimianski, Purdue Extension	Kendell Culp, Indiana Farm Bureau & State Representative Shelly Yoder, State Representative Angie Doucette, American Farmland Trust
9:45 – 10:00	Break (Room Transitions)				
10:00 – 11:00	Urban Ag	Vegetables	Business	Livestock	Farmland Access and Succession
	Land Use/Zoning Roundtable	Farmers' Perspectives on Crop Production and Pest Management	Shared Experience: The Benefits and Need for Mentorship	Fencing and Watering Solutions for Rotational Grazing	Leasing Options and Resources and FSA Loans
	Linda Adams, Katherine Boyles and James Wolff, Purdue Extension	Jim Baughman, Freedom Valley Farm Genesis McKiernan-Allen, Fullhand Farm Roger and Mary Winstead, Beautiful Edibles	Axel Cooper, Community Montessori SARE Awardee	Jason Tower, Southern Indiana Purdue Agricultural Center	Bridgette Wanhainen, FSA Renee Wiatt, Purdue AgEcon
11:00 – Noon	Trade Show Break Trade Show Demonstration				
12:00 -1:15	Networking Luncheon – North and South Halls				
1:15 – 2:15	Keynote Session – North and South Halls Build the Brand, Cultivate the Land, Clarenda “Farmer Cee” Stanley, Green Heffa Farms				
2:15 – 2:30	Break				
2:30-3:20	Urban Ag	Vegetables	Business	Livestock	Farmland Access and Succession
	Growing a Dynamic Board	Protection from Above and Below: Entomopathogenic Nematodes in High Tunnel Specialty Crop Production	Practical Tax Strategies and Business Structures for Small Farms	Successful Solar Grazing	Stories of Succession: Farmers' Experiences in Land Transfer
	Steve Yoder, Purdue Extension	Julia Wooby, Purdue ENTM	Datrack Jefferson, D. Jefferson and Associates	Paul Cummings, energyRe	Jim Baughman, Freedom Valley Farm Mike Hoopengardner, Redbud Farm and Caprini Creamery Carmen Shepperd and Ayla Dollar, Butterfly Hill Flower Farm
3:20-3:30	Break (Room Transitions)				
3:30-4:20	Urban Ag	Vegetables	Business	Resilient Agriculture	Farmland Access and Succession
	Season Extension, Heat Islands and Implications for Pest Management on Urban Farms	Efficiency Hacks Part II	“Farmer Cee’s 5 V’s of Farm Brand Building	Christmas Trees and Sheep: Combining Enterprises for Efficiency and Sustainability	Policy and Advocacy: What Farmers Can Do
	Laura Ingwell, Purdue ENTM	Chris Adair, Purdue Student Farm Roger and Mary Winstead, Beautiful Edibles	Farmer Cee, Green Heffa Farms	Jeff and Elise Koning, Sylvanmore SARE Awardee	Andy Tauer, Indiana Farm Bureau Mike Hoopengardner, Redbud Farm
9:00 – 4:00	Two Quiet Rooms Available				
4:30-6:30	Evening Social Poster Session (4:30-6:30) Trade Show Passport				

SESSIONS OVERVIEW

WEDNESDAY, MARCH 5		Hendricks County 4-H Fairgrounds and Conference Complex			
8:00 –	Conference Registration				
	CONFERENCE ROOM	NORTH HALL	SOUTH HALL	CLASSROOM B-C	CLASSROOM A
8:45 – 9:45	Livestock	Vegetables	Business	Niche Opportunities	Resilient Agriculture
	Small Scale Dairying in Indiana: Understanding Industry Forces, Opportunities and Challenges Before You Begin	Nutrient Management Tool	Exploring Food Product Development and Business Opportunities	Pains, Gains and Remains: Establishing a Truffle Orchard	Integrating Sheep Wool Pellets with Specialty Crop Systems to Enhance Soil Health, Water Storage Carbon Sequestration, and Plant Production
	Kevin Allison, Marion County Soil and Water Conservation District	Madison Mehringer, Purdue Food Entrepreneurship and Manufacturing Institute (FEMI)	Evan and Mimi Kokoska	Whitney Schlegel, Marble Hill Farm	Rachel Beyer and Jonas Carpenter, Mavourneen Farm
	James Farmer, Twin Springs Creamery	Dan Perkins, Good Earth Farm	SARE Awardees	SARE Awardees	
9:45 – 10:00	Break (Room Transitions)				
10:00 – 11:00	Livestock	Flowers	Business	Niche Opportunities	Resilient Agriculture
	Meat Processing Do's and Don'ts	Extending the Specialty Cut Flower Season without Breaking the Bank	Entering the School Food Market, eFMNP and SNAP	Tapping Black Walnuts for Syrup	Impact of Soil Fertility Amendments and Cover Cropping on Soil Health
	Jessica Roosa, This Old Farm	Roberto Lopez, MSU	Anna Holloway, Indiana Farm to School Beckie Lies, Purdue Extension Legita Wilson, Indiana Department of Health	Jonathan Elrod, The Rusted Flatbed Farm SARE Awardee	Petrus Langenhoven, Purdue HLA Nathan Shoaf, Purdue Extension
11:00 – Noon	Trade Show Break Poster Session Trade Show Demonstration				
12:00 –2:15	Facilitated Networking Luncheon – North and South Halls				
2:15 – 2:30	Break				
2:30-3:20	Urban Ag	Flowers	Business	Niche Opportunities	Organic Ag
	Lead Ahead: New Insights for Safer Soil Practices	Adding Cut Flowers to your Farm	Building Your Brand: From Vision to Value	Sustainable Methods for Growing Figs in the North Central Region (Indiana)	Certification Transitions Panel - Organic and More
	Gabriel Flippelli, Professor and Executive Director of Indiana University Environmental Resilience Institute	John-Michael Elmore and Candace Minster, White Violet Center for Eco-Justice	Lita Rouser, Indiana Small Business Development Center	Kris Heeter, President of Indiana Nut and Fruit Growers Association	Rachel Beyer or Jonas Carpenter, Mavourneen Farm
	Anna Paltseva, Purdue Agronomy and HLA Nathan Shoaf, Purdue Extension			SARE Awardee	Jordan Bohall, Birdie & the Bees Farm Wendy Carpenter, Christopher Farm Dan Perkins, Perkins Good Earth Farm
3:20-3:30	Break (Room Transitions)				
3:30-4:20	Urban Ag	Flowers	Business	Niche Opportunities	Organic Ag
	Volunteer Management Roundtable	Growing for Your Market (Virtual presentation)	SBA Funding Options for Small Farms	Active Learning Session on Postharvest Dehydration: Food Safety and Beyond	Panel Continued
	Amanda Bradshaw Burks, Carey Grable, and John Orick, Purdue Extension	Alexis Sheffield, University of Kentucky	Lindsay Maliqi, U.S.Small Business Administration	Betty Feng and Fanny Gozzi, Purdue Food Science	
9:00 – 4:00	Two Quiet Rooms Available				

SESSION DESCRIPTIONS

TUESDAY, MARCH 4

URBAN AG / The Art and Skill of Urban Beekeeping*by Ross Harding***8:45 - 9:45 a.m.** CONFERENCE ROOM

Learn the basics to the most advanced strategies in one easy-to-understand presentation.

VEGETABLE PRODUCTION / Crop Complexity Impacts Insect Dynamics in High Tunnel Systems*by Allison Zablah***8:45 - 9:15 a.m.** NORTH HALL

Crop complexity, or rather plant diversity, within high tunnel systems play an important role in shaping insect communities. Through on-farm observations and manipulated research, we explored how variations in crop complexity impact pests and beneficial insect communities in high tunnels. We present our findings and identify plants that promote natural enemies in the system, contributing to biological control.

VEGETABLE PRODUCTION / Evaluating the Impact of Protected Culture and Plant Diversity on Pollinator Communities*by Robert Grosdidier***9:15 - 9:45 a.m.** NORTH HALL

Currently, the dynamics of beneficial insects, such as pollinators, in high tunnel growing systems are poorly understood. The goal of my research is understanding the ecology and diversity of pollinating insects in this controlled environment. Further, I am attempting to optimize high tunnel environments to attract pollinating insects with the goal of maximizing yield of flowering high tunnel crops. I will present data contrasting the composition of pollinating insects in high tunnel vs. field-grown crops, and how cultural practices influence these differences.

BUSINESS / Price It Right: Smart Pricing Strategies with HortCalculator*by Ariana Torres and Jean Zavala***8:45 - 9:45 a.m.** SOUTH HALL

Discover how to set profitable prices for your leafy greens using data-driven strategies and user-friendly tools. Learn to analyze your production costs, understand market dynamics, and determine optimal pricing points that maximize your farm's profitability. Through practical demonstrations of the HortCalculator, you'll see how to streamline financial recordkeeping and use breakeven analysis to make confident pricing decisions. Join us to transform your pricing approach from guesswork to strategy, ensuring your farm's long-term financial success.

LIVESTOCK / Small Ruminant Secrets: Strategies for Thriving Herds*by Sara Dzimianski***8:45 - 9:45 a.m.** CLASSROOM B-C

Learn the secrets to success in raising sheep and goats. Extension Educator and small ruminant expert Sara Dzimianski shares management strategies for successful small ruminant management. Whether you're planning a small backyard herd or flock, or planning to raise them on a larger scale, understanding the principles of small ruminant behavior and nutrition can place you on the road to success.

FARMLAND ACCESS AND SUCCESSION / Future of Indiana Farmland – Assessment and Conservation*by Kendell Culp, Shelly Yoder and Angie Doucette***8:45 - 9:45 a.m.** CLASSROOM A

We've all heard the statistics—Indiana's farmers are aging and we're losing farmland at record rates. But what's being done to protect it? Learn about current legislative efforts to preserve farmland and support farmers and what this could mean for future land access. Plus, hear from American Farmland Trust about their work in land protection and their new efforts in Indiana

URBAN AG / Land Use/Zoning Roundtable*by Linda Adams, Katherine Boyles and James Wolff***10:00 - 11:00 a.m.** CONFERENCE ROOM

Learn and discuss practical strategies for accessing urban land, navigating zoning regulations, and working with local governments to achieve urban agriculture goals.

SESSION DESCRIPTIONS

VEGETABLE PRODUCTION / Farmers' Perspectives on Crop Production and Pest Management

by Jim Baughman, Genesis McKiernan-Allen,
Mary Winstead and Roger Winstead

10:00 – 11:00 a.m. NORTH HALL

Join this panel as they talk about their experiences collaborating with Purdue Extension in on-farm research. They will talk about their participation in projects, pest challenges, strategies they have implemented that work and struggles they are still facing. While the research project focused on high tunnel production systems, the discussion will move beyond the tunnel and consider the whole farm.

BUSINESS / Shared Experience: The Benefits and Need for Mentorship

by Axel Cooper, SARE Grant Awardee

10:00 – 11:00 a.m. SOUTH HALL

This presentation will be on the growing need for meaningful experiences for our young people. The presenter will share the process of writing a grant for agriculturally based programming for a group of 80 middle schoolers, how the programming was implemented, and what the key takeaways and challenges were. It hopes to inspire small farmers to look at how their farms can accommodate retreats, youth groups, and educational experiences.

LIVESTOCK / Fencing and Watering Solutions for Rotational Grazing

by Jason Tower

10:00 – 11:00 a.m. CLASSROOM B-C

We will discuss and demonstrate temporary fence and water products that aid in making managed grazing efficient for both the livestock and operator.

FARMLAND ACCESS AND SUCCESSION / Leasing Options and Resources and FSA Loans

by Bridgette Wanhainen and Renee Wiatt

10:00 – 11:00 a.m. CLASSROOM A

Did you know that the Farm Service Agency (FSA) offers loan programs that could help you start or grow your farm? Could you qualify for an operating loan? Is FSA financing the right fit for buying a farm? Join us as we dive into the nitty gritty of how FSA lending works and what they can offer. Not ready to buy? Leasing may be an option for you! We'll also cover the basics of farmland leases and share resources to help you navigate the process.

KEYNOTE / Build the Brand, Cultivate the Land

by Clarendia "Farmer Cee" Stanley

1:15 – 2:15 p.m. NORTH AND SOUTH HALLS

In this inspiring keynote, Clarendia "Farmer Cee" Stanley, the founding CEO of Green Heffa Farms, shares her journey of building a purpose-driven brand while cultivating a sustainable farming operation. Drawing from her experience as a farmer, herbalist, and seasoned marketing and fundraising professional, she will explore how to align your personal values with your business vision to create an authentic brand that resonates with consumers. Attendees will gain actionable insights on balancing land stewardship with brand development, leveraging storytelling to connect with audiences, and navigating the challenges of building a business rooted in purpose and sustainability. Whether you're a new farmer or an established entrepreneur, this session will equip you with strategies to grow your brand and your land in harmony.

URBAN AG / Growing a Dynamic Board

by Steve Yoder

2:30 – 3:20 p.m. CONFERENCE ROOM

Impactful nonprofit organizations are intentional in the way they recruit, engage, and evaluate their board members. In this session, learn how to harness the power of the nine steps of the Board Development Cycle to grow a more dynamic board: Identify; Cultivate; Ask; Orient; Involve; Educate; Assess; Rotate; Celebrate!

VEGETABLE PRODUCTION / Protection from Above and Below: Entomopathogenic Nematodes in High Tunnel Specialty Crop Production

by Julia Wooby

2:30 – 2:55 p.m. NORTH HALL

Entomopathogenic nematodes (EPNs) are underutilized biological control agents in agricultural systems. EPNs effectively target the soil-dwelling life stages of key pests, while posing low risk to beneficial insects. Under high tunnel conditions, crop and pest dynamics are altered, requiring control methods that work synergistically with other management strategies in these protected agricultural systems. In this presentation I will share what I have learned about EPNs and management practices in high tunnels, informing how to successfully incorporate these organisms into biological control of key specialty crop pests.

SESSION DESCRIPTIONS

VEGETABLE PRODUCTION / Managing the Environment for Winter Production*by Wenjing Guan and Liz Maynard***2:55 – 3:20 p.m.** NORTH HALL

We will discuss environmental management practices for crop production in a protected environment in winter and how those practices affect plants and pests.

BUSINESS / Practical Tax Strategies and Business Structures for Small Farms*by Datrick Jefferson***2:30 – 3:20 p.m.** SOUTH HALL

This presentation will provide actionable tax strategies and insights on business structures to help farmers optimize and grow their operations.

LIVESTOCK / Successful Solar Grazing*By Paul Cummings***2:30 – 3:20 p.m.** CLASSROOM B-C

Interested in potentially having solar panels as part of your grazing system? Learn about solar development in general, the opportunity for grazing and how to manage everything for success.

FARMLAND ACCESS AND SUCCESSION / Stories of Succession: Farmers' Experiences in Land Transfer*by Jim Baughman, Mike Hoopengardner, Ayla Dollar and Carmen Sheppard***2:30 – 3:20 p.m.** CLASSROOM A

Does accessing land seem overwhelming? Learn from farmers about their experiences transferring land and/or businesses. How they did it, what resources they used, what they wish they might have done differently.

URBAN AG / Season Extension, Heat Islands and Implications for Pest Management on Urban Farms*by Laura Ingwell***3:30 – 4:20 p.m.** CONFERENCE ROOM

Throughout the past three years we have collaborated with high tunnel farmers across Indiana, Illinois, New Hampshire and Maine to get a better understanding of high tunnel production systems, season extension, and pest management along an urban-rural geographical gradient. In this presentation, we will look at the environmental regulation within high tunnels and explore the phenomena of an urban heat island effect in this agricultural system. We will share our observations of both pests and beneficial insects in these systems, as well as best practices for optimal production.

VEGETABLE PRODUCTION / Efficiency Hacks Part II*by Chris Adair, Mary Winstead and Roger Winstead***3:30 – 4:20 p.m.** NORTH HALL

Back by popular demand, join this panel as they share hacks that have made farming just a little bit easier, more efficient, or fun! We encourage audience participation!

BUSINESS / Farmer Cee's 5 V's of Farm Brand Building: Values, Vision, Visuals, Voice and Validity*by Clarendia "Farmer Cee" Stanley***3:30 – 4:20 p.m.** SOUTH HALL

Join Farmer Cee at the 2025 Indiana Small Farm Conference for an insightful session on building a farm brand that stands out and stands strong. Through her 5 V's framework — Values, Vision, Visuals, Voice and Validity — she will break down how to create an authentic and impactful farm brand rooted in purpose. Learn how to define your core values, craft a compelling vision, develop visuals that resonate, establish a distinct voice, and build validity that fosters trust and longevity. Whether you're just starting or looking to refine your brand, this session will provide practical, real-world strategies to help you grow with integrity and intention.

RESILIENT AGRICULTURE / Christmas Trees and Sheep: Combining Enterprises for Efficiency and Sustainability*by Jeff and Elise Koning, SARE Grant Awardees***3:30-4:20 p.m.** CLASSROOM B-C

Resources such as labor and land can be in short supply on a small farm, making resiliency and efficiency essential. Different enterprises can work together to benefit the entire farm. In this session, learn how growing Christmas trees and raising sheep blend to meet the goals of minimizing weed interference within the trees and maximizing pasture utilization for the animals.

FARMLAND ACCESS AND SUCCESSION / Policy and Advocacy: What Farmers Can Do*by Andy Tauer and Mike Hoopengardner***3:30 – 4:20 p.m.** CLASSROOM A

Are you concerned about the future of farmland? Farmers play a critical role in shaping policies that keep farming viable and accessible—now and for future generations. Learn how you can advocate for farmland and farmers at the local, state and national levels.

SESSION DESCRIPTIONS

WEDNESDAY, MARCH 5

LIVESTOCK / Small-Scale Dairying in Indiana: Understanding Industry Forces, Opportunities and Challenges Before You Begin*by James Farmer***8:45 – 9:45 a.m.** CONFERENCE ROOM

We will focus on factors leading to a growth in small and micro dairies and creameries, as well as critical variables to consider before you get started. From pasteurizers and personnel to insurance and inputs, we will dive deep into the world of on-farm creameries and small-scale dairies. Farmer will pull from his professional scholarship in speaking with dozens of dairy farmers, as well as his personal experience in starting and running Twin Springs Creamery in Bloomington, Indiana. Participants are encouraged to come with questions and excitement to partake in a lively conversation.

VEGETABLE PRODUCTION / Nutrient Management Tool*by Kevin Allison and Dan Perkins***8:45 – 9:45 a.m.** NORTH HALL

Take the guesswork out of nutrient management in vegetable production with Indiana's new Nutrient Management Tool. This session demonstrates how to seamlessly translate soil test results into precise recommendations for types and amounts of fertilizer and amendment for crops and beds. Dive into the tool's features and participate in a collaborative discussion led by Kevin and Dan Perkins of Perkins' Good Earth Farm on strategies, sourcing, and tips.

BUSINESS / Exploring Food Product Development and Business Opportunities*by Madison Mehringer***8:45 – 9:45 a.m.** SOUTH HALL

This presentation will examine the fundamental principles for creating food products and food businesses. We will discuss the important steps in food product and food business development, such as how to safely produce food products, and how to determine the feasibility and viability of your product in your target market. Additionally, home-based vendor and value-added product opportunities will be explored.

NICHE OPPORTUNITIES / Pains, Gains and Remains: Establishing a Truffle Orchard*by Evan and Mimi Kokoska, SARE Grant Awardees***8:45 – 9:45 a.m.** CLASSROOM B-C

The why, what, and who associated with growing truffles in Indiana and North America will be discussed. The challenges and rewards during our first three years in establishing a truffle orchard in Indiana (USDA Hardiness Zone 6a) will be shared. Decisions and solutions were usually pursued as needs arose. Some required immediate attention, while others occurred repeatedly before an answer was evident. There are variabilities and similarities for truffle growers, even when locations are within the same state and region.

RESILIENT AGRICULTURE / Integrating Sheep Wool Pellets with Specialty Crop Systems to Enhance Soil Health, Water Storage, Carbon Sequestration, and Plant Production*by Whitney Schlegel, Rachel Beyer and Jonas Carpenter, SARE Grant Awardees***8:45-9:45 a.m.** CLASSROOM A

This presentation will share the NCR-SARE Farmer Rancher Grant collaborative project of Marble Hill Farm and Mavourneen Farm that sought to further understand how to integrate animal and plant systems using sheep wool pellets as a soil amendment in specialty crop growing systems. Shearing is a necessary step in sheep husbandry, required for animal health and welfare. Since 1994, the market price for wool has been dropping, now below the cost of shearing. If not utilized in small batch wool niche markets, limited by availability of fiber mills, and with few wool buyers in the NCR wool piles up in barns or is dumped in sink holes and woods. Our project produced wool pellets from local waste wool and employed them as a soil amendment in organic specialty crop growing systems. The farmer team explored how sheep wool pellets fit with current management practices to meet soil nutrient requirements for vegetable crops. The results from this on-farm implementation of wool pellets in field and high tunnel production systems will be shared during this presentation. The farmer rancher team believes that for there to be adoption of new management practices in farming systems they must be applied and shared locally/regionally farmer-to-farmer to facilitate innovation and new management practices that can be applied on each unique small farm.

SESSION DESCRIPTIONS

LIVESTOCK / Meat Processing Do's and Don't's*by Jessica Roosa***10:00-11:00 a.m.** CONFERENCE ROOM

True partnerships require one another to walking in another's shoes. Jessica Roosa, small farmer and meat processor, will cover many of the misunderstandings from both sides of the fence (farming and meat processing) while looking at ways that each can improve. We will cover livestock, meat, and market segment choices. Plenty of audience feedback and questions welcomed.

FLOWERS / Extending the Specialty Cut Flower Season without Breaking the Bank*by Roberto Lopez***10:00-11:00 a.m.** NORTH HALL

Would you like to have specialty cut flowers available for your customers for a longer period of time, but cannot afford to build a greenhouse? In this session, Roberto will show you how to cost-effectively start transplants indoors to get a head start on the season. Have you ever considered constructing a high tunnel for season extension, but don't know if it is a worthwhile investment? Roberto will show you the benefits and return on your investment. Lastly, you will learn which specialty cut flower crops are day-length sensitive and how to improve cut flower quality and reduce time to harvest.

BUSINESS / Entering the School Fund Market, eFMNP and SNAP*by Anna Holloway, Beckie Lies and Legita Wilson***10:00-11:00 a.m.** SOUTH HALL

Are you looking for new market opportunities to sell your products? Learn about several programs that could open new opportunities with schools and at farmers markets and farm stands. See if your products qualify and find out how to sign up.

NICHE OPPORTUNITIES / Tapping Black Walnuts for Syrup*by Jonathan Elrod, SARE Grant Awardee***10:00-11:00 a.m.** CLASSROOM B-C

This presentation is intended to be a how-to guide for anyone who would like to make syrup from their black walnut trees. It will discuss the results of research on tapping black walnuts for syrup in a small operation. The focus of the research is learning how much black walnuts mirror or diverge from maples in regard to sap production. Jonathan will explain the tapping and tubing process. He will display the inexpensive pneumatic-powered

"lunchbox" vacuum tubing system he uses. Lastly, he will discuss the basics of filtering and bottling. The focus is on small producers and hobbyists and cost-effective options.

RESILIENT AGRICULTURE / Impact of Soil Fertility Amendments and Cover Cropping on Soil Health*by Petrus Langenhoven and Nathan Shoaf***10:00-11:00 a.m.** CLASSROOM A

Optimizing soil health and plant nutrient management can be challenging in organic systems due to the slow release of nutrients from organic soil amendments. In non-certified systems, conventional fertility sources can provide essential nutrients while growers build their soil health. Building soil health requires lots of biomass; summer and fall/winter cover cropping can provide a sustainable solution. Cover cropping offers clear benefits to farmers and the environment. This presentation discusses the impact of conventional, organic, and mixed soil amendment systems, summer and winter cover cropping, and the application of compost on soil health. Part of the presentation will be participatory, where we ask for attendees' input.

URBAN AG / Lead Ahead: New Insights for Safer Soil Practices*by Gabriel Flippelli, Anna Paltseva, and Nathan Shoaf***2:30 - 3:20 p.m.** CONFERENCE ROOM

Soil and dust generated from soil are a continuing environmental health burden to children. Here we will discuss briefly the history of lead use, the present distribution of legacy soil lead in the environment, the potential challenges dealing with soil lead at the household or urban farm scale, and how community science has improved our understanding of environmental lead. Catch these research updates from three experts on lead in urban soils and the implications for safe and sustainable agriculture practices.

FLOWERS / Adding Cut Flowers to Your Farm*by Candace Minster and John-Michael Elmore***2:30 - 3:20 p.m.** NORTH HALL

Cut flowers have exploded in popularity in recent years. While they can provide higher returns than produce on small amounts of land, there are important factors to consider before changing your farm model. White Violet Center Farm managers John-Michael Elmore and Candace Minster will share their experiences changing the farm from a CSA-driven vegetable operation to a market-driven vegetable and cut flower farm. They will share their processes, logistical considerations, tips, and save time for grower Q & A.

SESSION DESCRIPTIONS

BUSINESS / Building Your Brand: From Vision to Value

by Lita Rouser

2:30 – 3:20 p.m. SOUTH HALL

In today's competitive market, a strong brand is your greatest asset. This presentation equips you to define, develop and activate your brand in a way that aligns with your vision and delivers exceptional value to your audience. You'll walk away with actionable steps to create a brand that not only inspires but also delivers lasting impact.

NICHE OPPORTUNITIES / Sustainable Methods for Growing Figs in the North Central Region (Indiana)

by Kris Heeter, SARE Grant Awardee

2:30 – 3:20 p.m. CLASSROOM B-C

While it is known that figs can be grown by hobbyists in Zones 5/6, there is no documented research for farmers interested in growing them for local markets. Fresh figs are sought after for their fruity sweetness, fiber, prebiotic, anti-inflammatory and nutritional value. Local farm stops and co-ops in the Midwest are seeking a wider variety of locally grown fresh fruits, including figs. Establishing conditions for growing figs locally will mitigate challenges of easily bruised, short-shelf life, and expenses associated with the rare transport from California. This project, conducted on several Indiana farms, compares cold climate production models for figs. Cold hearty variety selection, tactical placement and economical winter protection of in-ground and potted trees will be discussed. This project is nearing the completion of Year 1 of a USDA-SARE funded grant. Data and Insights gathered to date, along with value-added product potential for figs, will be shared.

ORGANIC AG / Certification Transitions Panel - Organic and More

by Rachel Beyer, Jordan Bohall, Jonas Carpenter, Wendy Carpenter and Dan Perkins

2:30 – 4:20 p.m. CLASSROOM A

Is a certification right for you? Panelists will share their motivations for obtaining certifications (either USDA Certified Organic or Certified Naturally Grown) and their experiences completing the certification transition. Supported by the Indiana Organic Network and moderated by Ashley Adair.

URBAN AG / Volunteer Management Roundtable

by Amanda Bradshaw Burks, Carey Grable and John Orick

3:30 – 4:20 p.m. CONFERENCE ROOM

We'll discuss recruiting, selecting, screening, training, recognizing, and evaluating volunteers. Likewise, we'll talk about how to navigate difficult volunteer situations. There will be a panel discussion to gain insights from other volunteer managers within Purdue Extension.

FLOWERS / Growing for Your Market (virtual presentation)

by Alexis Sheffield

3:30 – 4:20 p.m. NORTH HALL

There are many different sales outlets for specialty cut flowers, and each has different goals for qualities such as vase life, colors, quantities and ideal varieties. We will explore the basics of each and how to thrive in four different cut flower market channels.

BUSINESS / SBA Funding Options for Small Farms

by Lindsay Maliqi

3:30 – 4:20 p.m. SOUTH HALL

Start or expand your farm with loans guaranteed by the U.S. Small Business Administration (SBA). You'll learn about three SBA loan programs, eligible use of proceeds for farm enterprises, how to connect with SBA lenders, and how to be loan-ready with assistance from SBA Resource Partners offering no-cost or low-cost business counseling across the state and virtually. We'll also touch on grant funding for innovative R&D and exporting.

NICHE OPPORTUNITIES / Active Learning Session on Postharvest Dehydration: Food Safety and Beyond

by Betty Feng and Fanny Gozzi

3:30 – 4:20 p.m. CLASSROOM B-C

Join us for an informative and engaging workshop focused on essential aspects of postharvest dehydration. We will discuss techniques of produce drying, quality preservation and food safety. Participants will have an interactive experience with different activities, ensuring they leave with practical knowledge that can be applied at home.

Speaker biographies are available online at:

https://extension.purdue.edu/anr/_teams/dffs/small_farm_conference/index.html

NOTE: SARE AWARDEE means these farms have either received a farmer/rancher grant or a partnership grant to investigate an innovative sustainable agricultural practice on their farms. To learn more about SARE grants to go <https://northcentral.sare.org/>.

TRADE SHOW VENDORS

AgrAbility

indianaagrability.org
ejsheldo@purdue.edu / 800-825-4264

Department of Horticulture and Landscape Architecture

ag.purdue.edu/department/hla/extension/index.html

Diversified Farming and Food Systems

extension.purdue.edu/anr/_teams/dffs/index.html
nlshoaf@purdue.edu

Indiana Organic Network

extension.purdue.edu/anr/_teams/dffs/organic_ag/ion/index.html
ionpurdue@purdue.edu / holmes9@purdue.edu

Indiana Grown for Schools

ingrown4schools.com
aholloway1@health.in.gov / 406-223-2751

Indiana State Trappers Association

indianastatetrappersassociation.org
mo2boys@yahoo.com / 765-5857036

Integrated Elements Compost LLC

iecompost.com
jgearheart72@gmail.com / 812-344-0109

Office of the Indiana State Chemist

oisc.purdue.edu/pesticide/index.html
carter14@purdue.edu / 765-494-1585

Purdue Ag Safety & Health

inprepared.org
ejsheldo@purdue.edu / 800-825-4264

Purdue Extension Farm Stress Team

extension.purdue.edu/farm_stress/
klanzzone@purdue.edu / 765-569-3176

Purdue Extension Nutrition Education Program

eatgathergo.org
fnp@purdue.edu

Report INvasive

ag.purdue.edu/reportinvasive
rfbruner@purdue.edu / 765-494-0822

Rimol Greenhouse Systems

rimol.com
mdelisi@rimol.com / 603-606-5474

Safe Produce Indiana

safeproducein.com
tgary@purdue.edu, 765-494-8271 / adeering@purdue.edu, 765-494-0512 / jsmonroe@purdue.edu, 812-888-7401

Society of St. Andrew Indiana Gleaning Network

endhunger.org/indiana
indiana@endhunger.org / 317-279-5119

Find more trade show vendors online at

extension.purdue.edu/anr/_teams/dffs/small_farm_conference/index.html.



RESOURCES

Purdue Extension Web Links

Horticulture & Landscape Architecture Extension home page
ag.purdue.edu/departments/hla/extension/index.html

Entomology Extension home page
ag.purdue.edu/departments/entm/extension/index.html

Commercial nursery and landscape
ag.purdue.edu/departments/hla/extension/nursery-and-landscape.html

Consumer horticulture (Indiana Yard & Garden)
purdue.edu/hla/sites/yardandgarden

Controlled environment agriculture
purdue.edu/hla/sites/cea/

Diversified Farming and Food Systems
extension.purdue.edu/anr/_teams/dffs

Horticulture business
purdue.edu/hla/sites/hortbusiness

Purdue Extension Master Gardener Program
hort.purdue.edu/mg

Entomology Extension vegetables
extension.entm.purdue.edu/veg

Entomology Extension fruit
extension.entm.purdue.edu/fruit

Midwest Vegetable Production Guide
mwvegguide.org

Extension Newsletters, Blogs & Social Media Pages

Facts for Fancy Fruit
hort.purdue.edu/fff/fff.shtml

In The Grow
purdue.edu/hla/sites/yardandgarden/publication/in-the-grow

Purdue Landscape Report
PurdueLandscapeReport.org

Vegetable Crops Hotline
vegcropshotline.org/

Yard & Garden Calendar
purdue.edu/hla/sites/yardandgarden/publication/gardening-calendars

Yard & Garden News
purdue.edu/hla/sites/yardandgarden/publication/yard-and-garden-news

Consumer Horticulture (Indiana Yard & Garden)
 Facebook @PurdueHomeHort

Pest & Crop Newsletter
extension.entm.purdue.edu/pestcrop

Purdue Horticulture Extension
 Facebook @PurdueHorticultureExtension
 Twitter/X @PurdueHortExt

Purdue Entomology Extension
 Facebook @PurdueFruitVegIPM
 Twitter/X @PurdueExtEnt

Purdue Landscape Report
 Facebook @PurdueLandscapeReport
 Twitter/X @PurdueLandscape Purdue

Master Gardener Program
 Facebook @PurdueExtensionMasterGardenerProgram
 Twitter/X @PurdueMG

Diversified Farming and Food Systems Newsletter
extension.purdue.edu/anr/newsletter.html

THANK YOU FOR ATTENDING!

NOTES

NOTES

[illegible]

OVERALL SPONSOR



Extension



SF

**SMALL
FARM**

UA

**URBAN
AGRICULTURE**

OA

**ORGANIC
AGRICULTURE**

LF

**LOCAL
FOOD**

BF

**BEGINNING
FARMER**

Purdue Diversified Farming and Food Systems is an Extension program made up of an interdisciplinary group of faculty, staff, Extension educators, students, practitioners and partners.

We work to connect programming, research and learning focused on urban agriculture, community wellness, local food, beginning farmers, small farms and organic agriculture, and the Purdue student farm.

Purdue University prohibits discrimination against any member of the University community on the basis of race, religion, color, sex, age, national origin or ancestry, genetic information, marital status, parental status, sexual orientation, gender identity and expression, disability, or status as a veteran.

www.purdue.edu/dffs



Agricultural Administration Building
615 Mitch Daniels Blvd.
West Lafayette, IN 47907-2053
Phone (765) 494-8490