

# Fairbanks Solar Energy Center

Lance Hoerbert

April 24, 2025



# Invenergy Overview and Indiana History

**World's  
Leading  
US Based  
Sustainable  
Energy  
Company**

---

**202**  
Projects  
Developed

**31GW**  
Developed  
Capacity

**9.3M**  
Homes  
Powered

**\$400M**  
Annual Local  
Economic  
Investment

# World's Leading Privately Held Clean Energy Company

---



## Wind

118 projects  
19,274 megawatts



## Solar

53 projects  
6,989 megawatts



## Storage

21 projects  
1,817 megawatt hours  
556 megawatts



## Offshore Wind

2 projects  
4,000+ megawatts in  
development



## Transmission

4 projects  
4,100+ miles of transmission  
& collection lines developed



## Clean Hydrogen

1 pilot project in construction  
40 metric tons will be  
produced annually



## Clean Water

9 water treatment facilities  
used at our project sites  
18 million gallons per day of  
raw water capacity



## Natural Gas

13 projects  
6,071 megawatts

## Invenergy Services

We use our 20 years of operations and maintenance experience to help you make the most of your energy center. Whether it's day one or years later, we use our owner's mindset to manage our energy centers and on behalf of our customers.

# Invenergy in Indiana

4 Projects | 775 Megawatts



**4 solar projects**  
totaling 775 megawatts



**136,000 American homes**  
powered through electricity generated



**850+ jobs**  
including Construction teams (830+) and  
operations & maintenance full-time staff (15+)



**3 Indiana counties**  
Sullivan, Clinton, and Pike



**\$9.4 million**  
in annual local economic investment



**Annual donations**  
to local education, emergency & veteran services, and  
environmental stewardship

# Local Benefits

# Benefits to Sullivan County

---

## Significant Investment in Sullivan County

**\$280,000,000+**

## New Local Tax Revenue & Landowner Income

**\$125 Million+** in local taxes and landowner payments over the life of the project

## Jobs

**~200-250 short-term jobs** during construction

**~3-5 long-term jobs** during operations

# Project Details & Layout

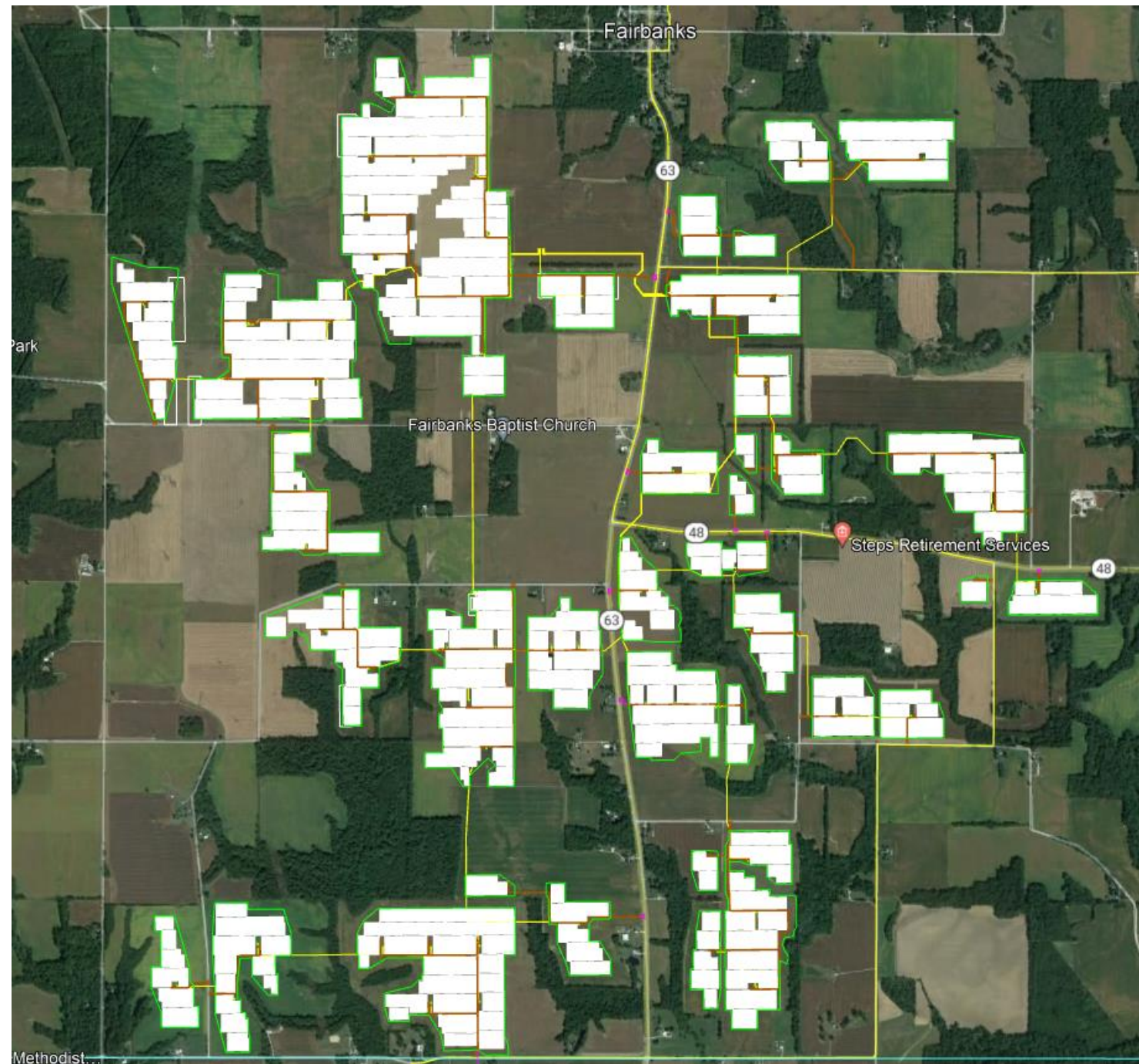
# Project Details

---

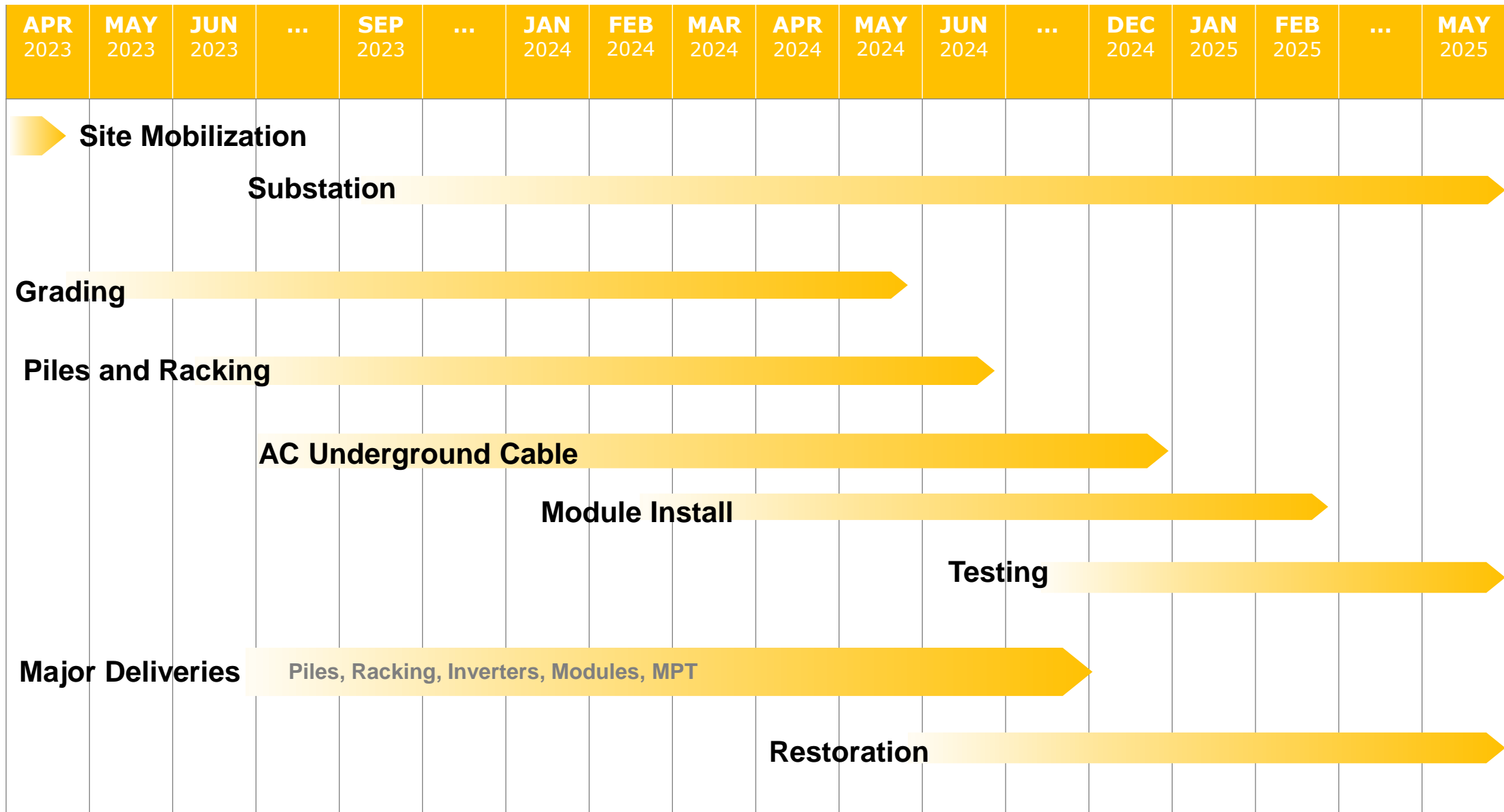
- 1,457 Acres
- 611,000 Solar Panels
- 63 Inverters
- 1 Substation
- 330MWdc / 250MWac

Will generate enough electricity to service the equivalent of ~50,000 average Indiana homes

Invenergy

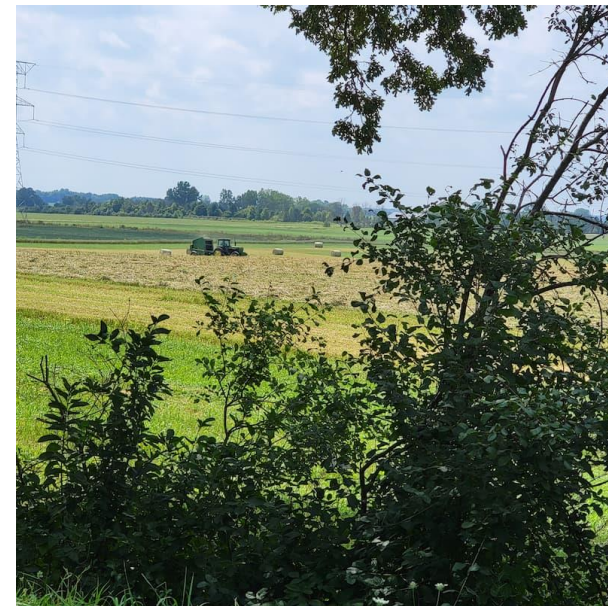


# Construction



# Initial Vegetation

---



# SWPPP BMPs

---

Installing silt fence



Filter Sock



Sediment Berm



# Grading

---

## Earthwork - Cut/Fill



Invenergy

## Installing Access Roads



# Electrical Install

---

CAB Install



AC/DC Trenching



# Inverters

---



# Piles and Racking

---

## Pile Driving



## Racking Install



# Module Installation

---

## Module Staging



Invenergy

## Module Install



# Substation

---

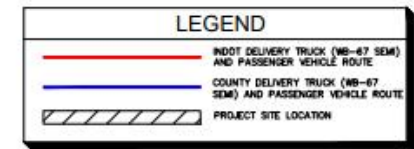
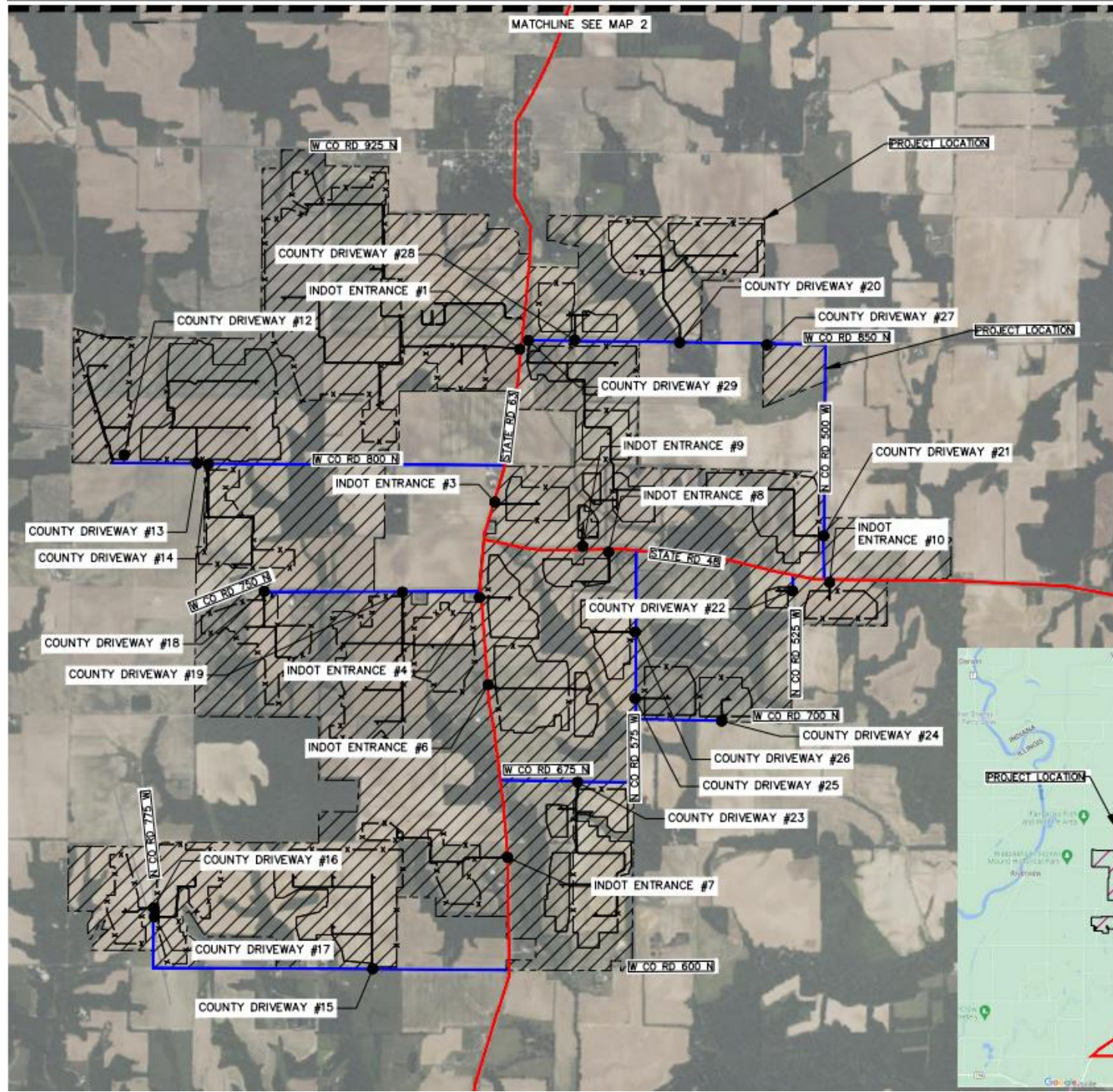
## 34.5 kV to 345 kV Substation



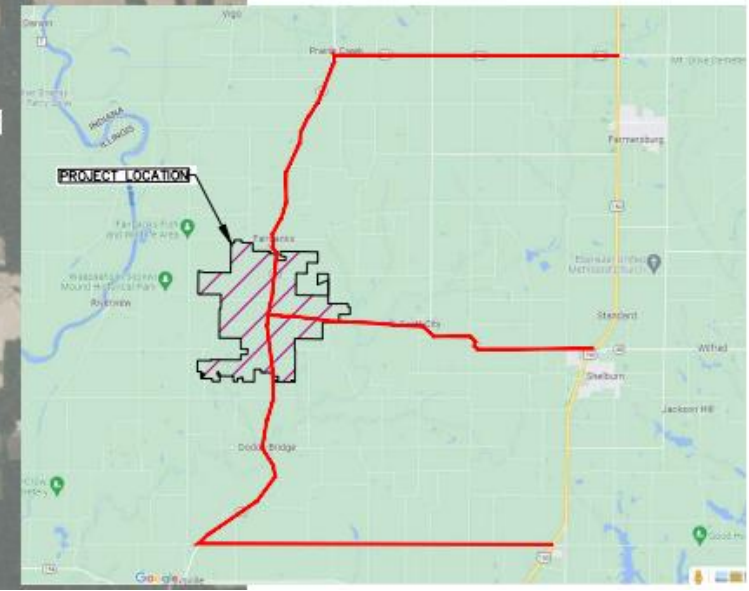
# Deliveries

---

- Road Use Agreement signed with Sullivan County
- Approved, designated haul routes
- Delivery of ancillary materials and equipment – rock, fencing, substation equipment, solar farm equipment



DRIVEWAY NO.	ROAD	DISTANCE
12	W COUNTY ROAD 800 N	1.57 MILES
13	W COUNTY ROAD 800 N	1.23 MILES
14	W COUNTY ROAD 800 N	1.18 MILES
15	W COUNTY ROAD 800 N	0.94 MILES
16	W COUNTY ROAD 800 N	1.42 MILES
17	N COUNTY ROAD 775 W	0.24 MILES
18	W COUNTY ROAD 800 N	1.43 MILES
19	N COUNTY ROAD 775 W	0.20 MILES
20	W COUNTY ROAD 750 W	0.87 MILES
21	W COUNTY ROAD 750 N	0.31 MILES
22	W COUNTY ROAD 850 N	0.63 MILES
23	N COUNTY ROAD 500 W	0.17 MILES
24	N COUNTY ROAD 525 W	0.06 MILES
25	W COUNTY ROAD 675 W	0.31 MILES
26	W COUNTY ROAD 700 W	0.34 MILES
27	N COUNTY ROAD 575 W	0.26 MILES
28	W COUNTY ROAD 675 W	0.52 MILES
29	N COUNTY ROAD 575 W	0.59 MILES
30	N COUNTY ROAD 575 W	0.33 MILES
31	W COUNTY ROAD 850 N	0.98 MILES
32	W COUNTY ROAD 850 N	0.21 MILES
33	W COUNTY ROAD 850 N	0.02 MILES
34	W COUNTY ROAD 1040 N	0.23 MILES



# County Roads

---

- Safety Emphasized with all Construction Parties
- Dust Control
- Close coordination with County Engineer, Jerry Netherlain

# Environment, Health and Safety

---

- Our #1 priority.
- Environment, Health, Safety and Job-Specific Training provided to all Team Members working at the Project
- Environment, Health, and Safety Supervisors and Management audits to ensure better outcomes and prevent incidences
- Ensuring an Environmental, Health, and Safety Culture across companies and all work levels

# Questions?

Invenergy

**We're building a  
sustainable world.**

---

**Join us.** [in](#) [f](#) [twitter](#) [instagram](#)

