



4-H Sheep Project

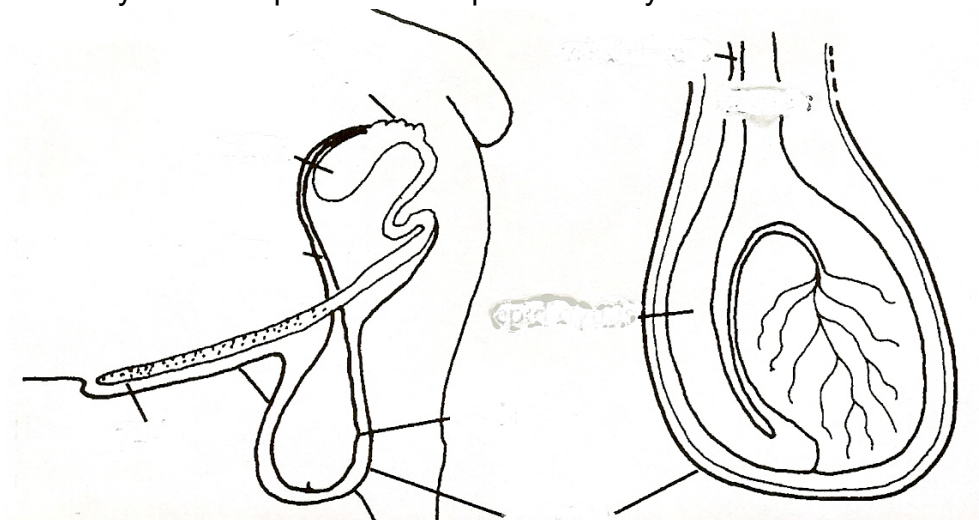
Boone County
Record Sheet A
Grade 8

Name: _____ 4-H Club _____

1. Find the genotype and phenotype of the following: Ram is an RR and the Ewe is an Rr.

| | |
|--|--|
| | |
| | |

2. Identify the male parts of the reproductive system.



3. Creep feeds need to have ____ to ____ percent protein, while lambs that reach 50-60 pounds require ____ to ____ protein levels.
4. All sheep should have plenty of clean fresh _____ in front of them at all times.
5. Make a list of items that you will need to bring with you to the fair for your sheep project:

6. Identify the following cuts of lamb:



- A. Arm Chop
- B. Loin Chop
- C. Sirloin Steak



- A. Arm Chop
- B. Loin Chop
- C. Sirloin Steak



- A. Shoulder Roast
- B. Loin Roast
- C. Whole Leg



- A. French Rib Chop
- B. Sirloin Steak
- C. Arm Chop



- A. Rack Roast
- B. Spareribs
- C. Riblets



- A. French Rib Chop
- B. Loin Chop
- C. Sirloin Steak

7. Match the treatment or prevention with the disease:

- | | | |
|---------------------|-------|--|
| A. Enterotoxemia | _____ | Eliminate the conditions that cause it |
| B. Coccidiosis | _____ | Vitamin E or selenium injections |
| C. Pneumonia | _____ | Optimal nutrition, clean dry fleece |
| D. Navel ill | _____ | Vaccinate with Clostridium type D |
| E. Sore Mouth | _____ | Good balance of calcium to phosphorus |
| F. Stiff Lamb | _____ | Drugs and feed additives help control |
| G. Urinary Calculi | _____ | Vaccinate the flock |
| H. Club lamb fungus | _____ | apply iodine and clean lambing areas |

8. Meat from sheep older then 12 months is referred to as _____.

Answers to all the questions can be found in the Sheep Resource Handbook 4-H 194R.