

ON THE HORIZON

on the horizon

In Boone County

IN THIS ISSUE

- 2025 Indiana Farm Custom Rate Survey
- Master Gardener Basic Training
- Online Pruning Workshop
- 2025 Boone County 4-H Enrollment
- Women in Agriculture 2024 Fall Newsletter
- Digital Ready Business
- New World Screwworm Information
- USDA Animal Health Advisory
- Beginning Farmer: Farm Resource Planning

Andrea Hatfield

County Extension Director
Agriculture & Natural Resources and Community
Development Educator

Purdue Extension - Boone County
www.extension.purdue.edu/boone

1300 E 100 S

Lebanon, IN 46052

765-482-0750

booneces@purdue.edu

Purdue University is an equal access/equal opportunity university.



JANUARY 2025

INDIANA FARM CUSTOM RATES SURVEY

JANUARY 2025



SCAN QR CODE FOR SURVEY

Please report rates for custom work which you have charged others, or which you have paid during the past year. Include the cost of hiring the machine with fuel and operator in all sections except the section which asks about machine rental rates. Please return this questionnaire even if you answer only one question. Facts about your business are kept confidential, and used only in combination with similar reports. Response is voluntary, but you can perform a valuable price discovery service for yourself and others by replying to this survey.

OR VISIT:
<https://purdue.ag/customrates>

QUESTIONS:
Please contact Michael Langemeier, Agricultural Economist, at mlangemei@purdue.edu or (317) 494-9557.



Center for Commercial Agriculture

2025 Indiana Farm Custom Rates Survey

We are frequently asked for the latest report on custom rates for ag services, and we need your help to ensure its accuracy. Please follow the link to report the rates you have charged for custom ag work or what you have been paid for it during the past year.

Facts about your business are kept confidential, and used only in combination with similar reports.

[Click Here For More Information or to Register](#)

Master Gardener Basic Training

Apply today to join the Master Gardener Basic Training where you will learn from experts in 14 sessions.

Training is on Tuesdays, February 4th-May 6th from 12:30-3:30PM

MASTER GARDENER BASIC TRAINING
BECOME A MASTER GARDENER VOLUNTEER

- ✓ Learn from Experts
- ✓ 14 in depth sessions
- ✓ Tuesdays, February 4th- May 6th, 2025
12:30pm-3:30pm
- ✓ At the Boone County 4-H Fairgrounds
- ✓ Applications Due January 17th

APPLY TODAY
at www.extension.purdue.edu/boone
Questions?? Call 765-482-0750 or booneces@purdue.edu

PURDUE UNIVERSITY Extension - Boone County

IN BOONE COUNTY!

[Click Here For More Information or to Register](#)

MICHIGAN STATE UNIVERSITY Extension

2025 Online PRUNING WORKSHOPS

Four FRIDAY dates in 2025 from which to choose:

January 17
January 24
March 7
March 14

All workshops will be held from 1 - 5:00 p.m. ET

MSU Extension Senior Horticulture Educator (retired), Rebecca Finneran will lead the interactive online Zoom workshops that are designed to help participants learn best practices for pruning and the proper equipment it takes for each job. You will be able to ask questions and interact with the instructor. And, prior to the workshop you have selected, you will have the option to submit photos for discussion and analysis, as time allows.

Following the January and March online webinars, Hands-on Outdoor Pruning Workshops will be organized in various Michigan locations. You will be notified about the dates, times and locations and can then register to select the workshop that works best for you, if applicable. There will be a separate fee for the Outdoor Pruning Workshop.

Fee: \$40.00

Partial scholarships may be available

Register via the link below and select the workshop date that works best for you.

<https://events.ans.msu.edu/2025OnlinePruningWorkshops>

Questions?
Contact Diane Brady at bradyd11@msu.edu



Online Pruning Workshop

An interactive online Zoom workshop series that is designed to help participants learn the best practices for pruning and the proper equipment to use.

Online classes will be held on January 17th, January 24th, March 7th, and March 14th from 1:00-5:00PM ET. The fee is \$40.00.

[Click Here For More Information or to Register](#)

2025 4-H Enrollment

The 2025 Boone County 4-H Enrollment is now open! There are over 60 projects offered in Boone County.



4-H: 3rd-12th graders
Mini 4-H: K-2nd



[Click Here For More Information or to Register](#)

Women in Agriculture 2024 Fall Newsletter

Learn more about the Women in Agriculture newsletter that provides timely events/activities you can partake in.

Events that are coming up include the Young Ladies in Ag Forum 2025 and you can read about Women in Ag 2024 Award Winners.



[Click Here For More Information or to Register](#)

DIGITAL READY BUSINESS
A Virtual Program Series

Learn how to help your business be tech savvy in 2025!! Grow your customer base and sales with these simple 1-hour sessions!

Sessions are Tuesdays & Thursdays from January 24th - February 28th from 1pm-2pm CST or 2pm-3pm EST

Come to one session (\$25) or all eleven sessions (\$250)
Questions: Contact Daniel Walker at walker422@purdue.edu

Session descriptions & Registration available here:

PURDUE UNIVERSITY Extension - Community Development

Digital Ready Business

A virtual program series to help you learn how to be tech savvy with your business.

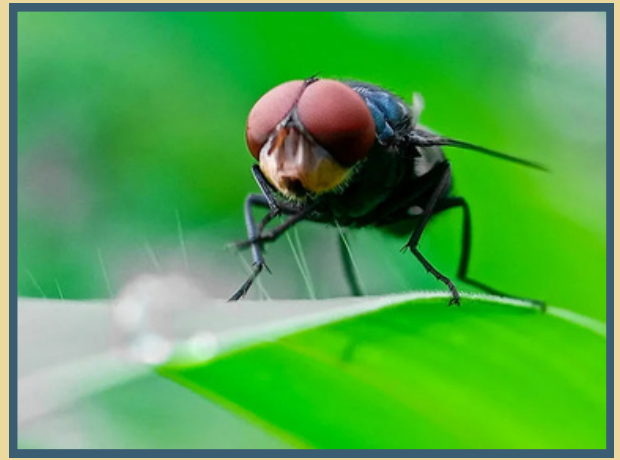
Sessions are Tuesdays & Thursdays from January 24th to February 28th from 1:00-2:00PM CST or 2:00-3:00PM EST

Fee: ONE session - \$25 or ALL sessions - \$250

[Click Here For More Information or to Register](#)

New World Screwworm

New World screwworm is a pest of livestock. It can affect any warm-blooded animal and people. Untreated screwworm can be fatal to livestock, wildlife, and humans.



[Click Here For More Information or to Register](#)



Animal Health Advisory

The US Department of Agriculture has updated specific federal traceability requirements for electronic identification (EID) in cattle and bison.

Effective November 5, 2024

[Click Here For More Information or to Register](#)

Beginning Farmer: Farm Resource Planning

An 8-session program designed to help small-scale and market farmers create a practical action plan.

Sessions will be via Zoom on Thursday evenings from 7:00-8:30PM EST starting January 9th-February 27th.

[Click Here For More Information or to Register](#)