



4-H LLAMA/ALPACA WORKSHEET

Grade 7

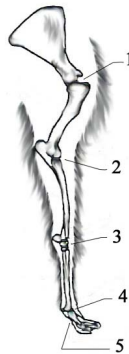


Name: _____ 4-H Club _____

1. Of the four South American camelids, the _____ inhabits the largest area from _____.

2. Label the parts of the front leg.

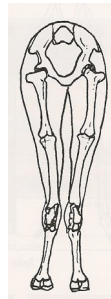
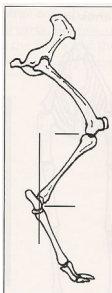
1. _____
2. _____
3. _____
4. _____
5. _____



3. Explain the three different types of classes offered to youth.

Showmanship	
Pack Obstacle	
Youth Judging	

4. Name the structural difference shown.



5. What is a "classic style" llama? _____

6. Choose a "condition of the skin". List the condition, what causes it, possible symptoms and possible treatment. Condition: _____

Cause:

Symptoms:

Treatment:

Use the Feed label to answer questions 7-13

7. What is the product name?

8. What is the main ingredient in this grain?

9. Overfeeding this product could result in

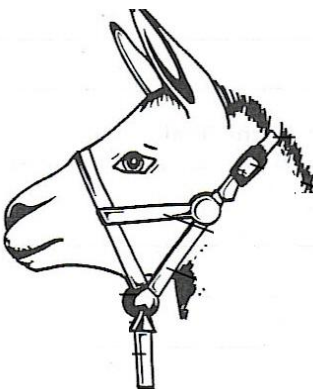
10. The minimum crude protein is

11. What are the feeding directions for this feed?

12. Do you need to feed extra minerals? _____

13. What is the minimum crude fat level? _____

14. Label the 5 parts of the halter.



15. Explain the proper way to pick up a llama's front foot. _____

RADITION	
LLAMA NUTRIENT PELLETS	
For Llama/Alpaca and Other Camelidae	
GUARANTEED ANALYSIS	
CRUDE PROTEIN, min.....	10.0%
CRUDE FAT, min.....	2.2%
CRUDE FIBER, max.....	22.0%
CALCIUM (Ca), min.....	2.6%
CALCIUM (Ca), max.....	3.1%
PHOSPHORUS (P), min.....	1.1%
SALT (NaCl), min.....	0.7%
SALT (NaCl), max.....	1.2%
VITAMIN A, min.....	30,000 IU/lb
INGREDIENTS	
Roughage products, grain products, calcium carbonate, monocalcium phosphate, dicalcium phosphate, salt, sodium selenite, magnesium oxide, zinc methionine complex, vitamin E supplement, manganous oxide, zinc oxide, ferrous sulfate, cobalt carbonate, sodium molybdate, ethylenediamine dihydriodide, vitamin A acetate, vitamin D3 supplement, vitamin B12 supplement, riboflavin supplement, niacin, calcium pantothenate, menadione dimethylpyrimidinol bisulfite (source of vitamin K activity), folic acid, biotin, thiamine mononitrate, pyridoxine hydrochloride, manganese methionine complex, copper lysine complex, cobalt glucoheptonate, vitamin A supplement, zinc sulfate, copper sulfate, manganese sulfate, calcium iodate.	
<i>This product has been specifically formulated for llamas and alpacas and is not intended for other species.</i>	
FEEDING DIRECTIONS:	
Feed Tradition Llama Nutrient Pellets at the rate of 1 pound per head per day to supply vitamins and minerals. It is not necessary to provide a free-choice mineral when fed at the recommended rate. This supplement should be fed with other sources of roughage and grains according to physiological needs of the animal. Always provide fresh, clean water.	
CAUTION: Do not overfeed. Overfeeding may result in an excess of minerals.	
Net weight 50 pounds (22.7 kilograms)	
Manufactured by: Llama and Alpaca Feed Company	

Llama/Alpaca Financial Record

Use separate pages to record your monthly data, if needed, and use this form to summarize your information.

Table 1: Feed Costs:

Hay Record	Number of days used	Cost per day	Cost per month
<i>example</i>	15	\$0.20	15 x 0.20 = \$3.00
April			
May			
June			
July			
Total cost			a.
Pasture Record	Number of Days	Avg. Cost per Day	Cost per month
April		\$0.30	
May		\$0.30	
June		\$0.30	
July		\$0.30	
Total cost			b.

Grain	Number of Lbs.	Cost per Pound	Cost per month
April			
May			
June			
July			
Total cost			c.
Total Average Feed Cost = a. + b. + c.= \$			

Table 2: Veterinary/Medical/Health costs:

Date	Item:(shots, vet fee, etc.)	Cost for service
Total Veterinary/Medical/Health cost = \$		

Table 3: Equipment and Tack costs:

Equipment	Cost/Value Each	Amount	Total: (cost x amount)
Brushes			
Halter			
Lead Rope			
Shearing fee			
Toenail clippers			
Pack			
Misc.			
Total Equipment cost = \$			

Table 4: Transportation costs: (to & from meetings, shows, etc.)

Date	Mileage	Cost	Total Cost (mile x per mile cost)
April			
May			
June			
July			
Total Transportations Cost = \$			

Financial Summary	
Item	4-H Show year
Income	
Any other income from project (i.e. Show Premiums)	
Total Income	\$
Expenses	
Purchase/value of animal(s)	
Boarding Fees (if applicable)	
Feed costs: (table 1)	
Veterinary/medical /health fees (Table 2)	
Equipment and Tack fees (Table 3)	
Transportation (to & from meetings, shows, etc.) (Table 4)	
Open or 4-H Show Fees	
Other (List)	
Total Expenses	\$
Income – Expenses: Actual or Projected Profit (loss)	\$