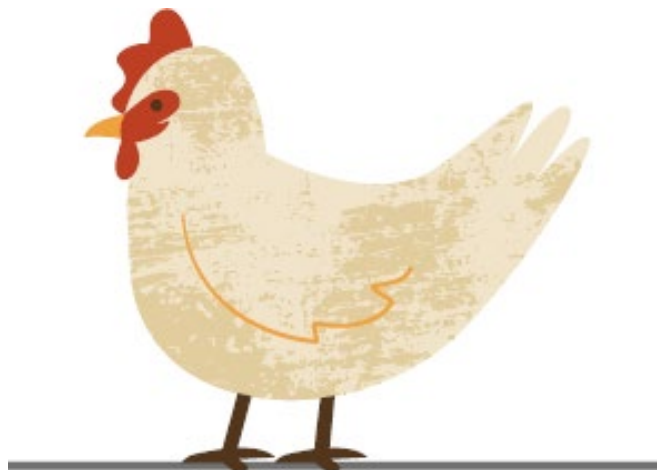




# Mini 4-H

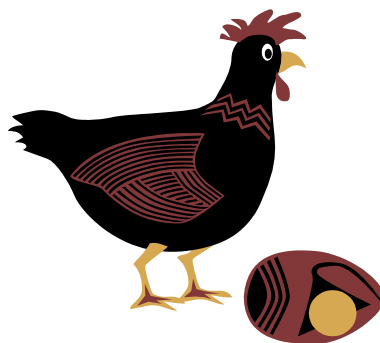
# FARM ANIMALS

(Dairy Cows, Beef Cattle, Goats, Sheep,  
Rabbits, Poultry, Horses & Swine)



## An Introduction to 4-H for Youth in Grades K – 2

Purdue University prohibits discrimination against any member of the University community on the basis of race, religion, color, sex, age, national origin or ancestry, genetic information, marital status, parental status, sexual orientation, gender identity and expression, disability, or status as a veteran.



Developed by Purdue Extension – Elkhart County  
17746 County Road 34 Ste E, Goshen, IN 46528, 574-533-0554

**Elkhart County Mini 4-H Farm Animals Manual**  
**Revised October 2024**



# 4-H Facts



**The 4-H Symbol:** A four leaf clover with an “H” in each leaf.

**4-H Colors:** Green and White

**The 4-H Motto:** To make the best better!

**The 4-H Pledge:**

**I Pledge**

**My *Head* to clearer thinking**

**My *Heart* to greater loyalty**

**My *Hands* to larger service**

**My *Health* to better living**

**For my Club,**

**My Community,**

**My Country,**

**and my World.**



# Mini 4-H



**Welcome** to *Mini 4-H*! You are now a member of the Elkhart County 4-H family! We hope that you will have lots of fun learning new things in your 4-H career.

*Mini 4-H* is designed for youth in Kindergarten through Second grade. It will give you a taste of the 4-H program as well as help you to explore a variety of project areas.

*Mini 4-H*'ers may enroll in two different projects each year. This manual contains fun, age appropriate activities to complete throughout the 4-H year. These activities will help you to learn about the project you have chosen. Additionally, the manual contains all instructions needed for the exhibit you will be preparing for the Elkhart County 4-H Fair in July.

There is no competition in the Mini 4-H program. Each child who completes a project for the Fair will receive the same green completion ribbon and certificate. Judges comment sheets are provided only as a way to help you do your very best on future projects.

*Mini 4-H* does not have regular monthly meetings. Try to attend the special activities planned especially for YOU! These will give you a chance to meet the project leaders, have some hands-on fun, and ask questions about your important Fair display. *Mini 4-H* is FUN! You will enjoy it.

Once you enter the third grade you can join a regular 4-H club that meets monthly. You must enroll each year of your 4-H career.

If you have questions about the *Mini 4-H* program, please call the Purdue Cooperative Extension Office at 574-533-0554. We will be happy to answer your questions.

**As a Mini 4-H parent, please help guide and encourage your child through the activities. Work with them to help them “learn by doing.” Activities in this manual are designed to help your child learn about the project they have chosen. It is not required that they complete all the activities. Choose those that interest you and your child.**



# Farm Animals

There are many types of farm animals. Some farm animals are large and some are small. They are all important to us. Farm animals provide food for us to eat. Can you name the animals from which we get these foods?

Hamburger \_\_\_\_\_

Ham \_\_\_\_\_

Milk \_\_\_\_\_

Eggs \_\_\_\_\_

Other farm animals help us on the farm. An example of a big helper is the horse. Before we had tractors, horses would help with plowing. Horses also pulled wagons and buggies. We can still see this example in the Amish communities in Elkhart and surrounding counties.

## ACTIVITY 1 – ANIMALS ON THE FARM

There are many animals on the farm. You will choose one animal for your project. You may want to do all the exercises in this manual to learn about all the animals, or you may want to only study your animal. It is up to you.

### *The Farm Animals You May Choose*

Beef Cattle  
Dairy Cow  
Horse

Poultry  
Sheep  
Swine

Rabbit  
Goat

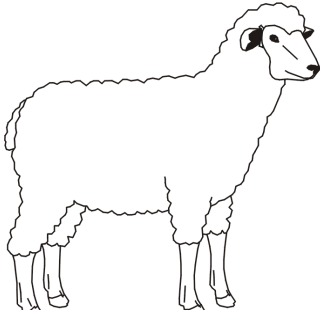


When you are old enough for regular 4-H (in the third grade) you can join the County 4-H Club for your animal. Each of these animals has a special club where 4-H'ers learn to care for and show their animals. Think about visiting some of the livestock (animal) barns or shows at the fair this summer so you can see how 4-H'ers how these animals. Talk with some of the 4-H'ers in the barns about their animals.

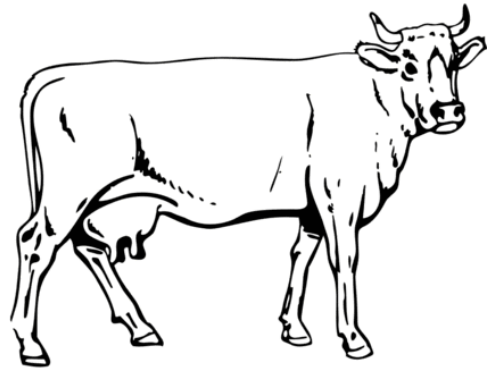
**Materials needed for this activity:** Activity sheets   Pencil   Crayons

**What you will do:**

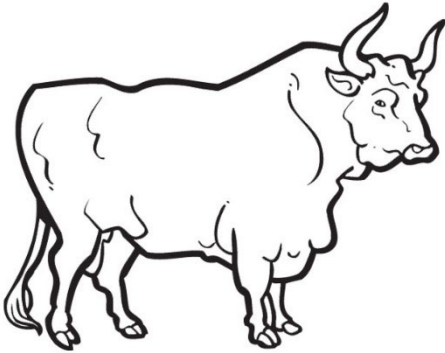
1. Look at the pictures of the animals.
2. Write the name of each animal on the line below each animal.
3. Color the picture of the animal you have chosen for your project.



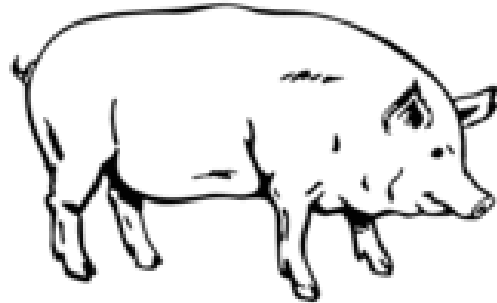
\_\_\_\_\_



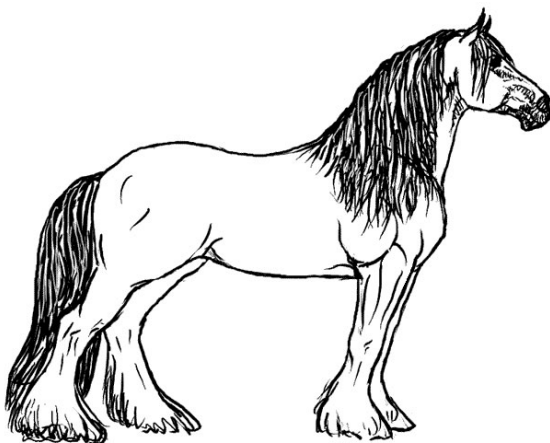
\_\_\_\_\_



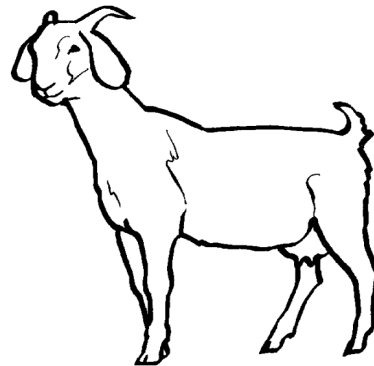
\_\_\_\_\_



\_\_\_\_\_

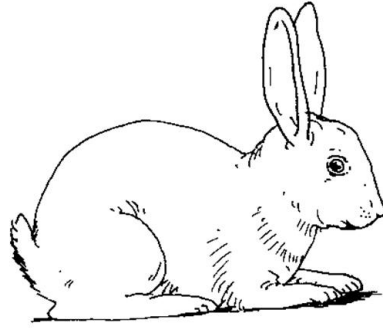
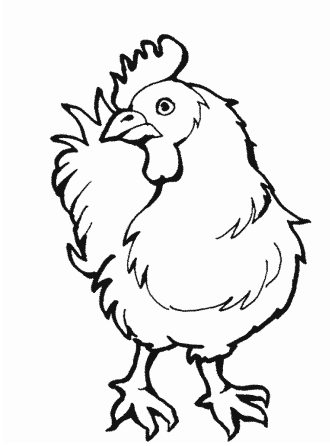


\_\_\_\_\_



Coloring & Activity Pages by: [www.HonkingDonkey.com](http://www.HonkingDonkey.com)

\_\_\_\_\_



---

**What did you learn?**

What animal did you choose for your project? \_\_\_\_\_

Why? \_\_\_\_\_

---



## **ACTIVITY 2 – ANIMAL BODY PARTS**

**Materials needed for this activity:**      Activity sheets      Pencil

**What you will do:**

1. Look at the pictures of animal body parts for the farm animal you have chosen. You will see that they have numbers pointing to a part of their bodies.
2. Name the body part. Some animal's body parts have special names. Use the word bank below.

*Hint: Check your answers in the back of this manual!*

### Farm Animal Body Parts Word Bank

poll  
breast  
round  
crops  
beak  
neck  
dewlap  
elbow  
gaskin  
rump

leg of lamb  
wing  
hock  
muzzle  
heart girth  
withers  
throat latch  
comb  
barrel

dewclaw  
crest  
fetlock  
toe  
ham  
dock  
thurl  
thigh  
ribs  
loins

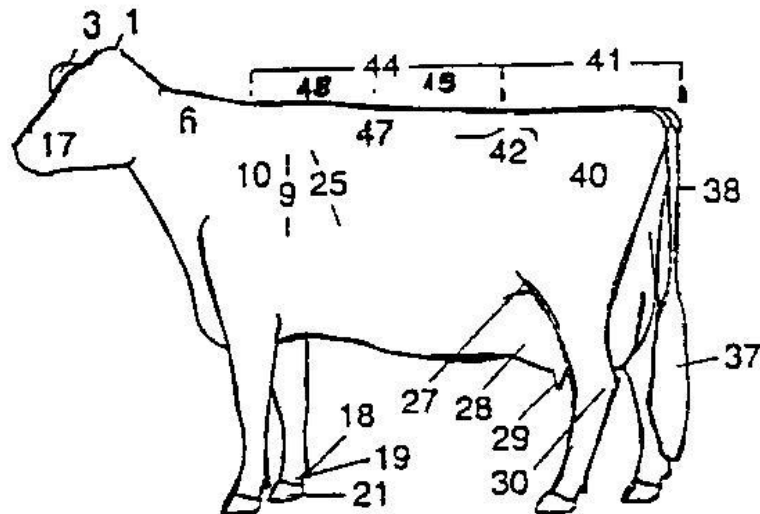
back  
snout  
shoulder  
croup  
switch  
hoof  
udder  
hip  
teat

knee  
jowl  
ear  
stifle  
pastern  
brisket  
foot  
spur  
tail  
chine



### Dairy Cow

Name the body parts of the dairy cow. Remember to use the word bank!

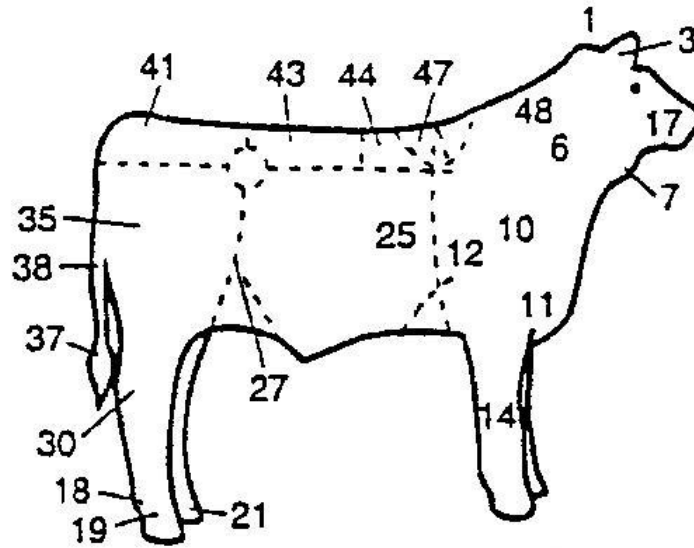






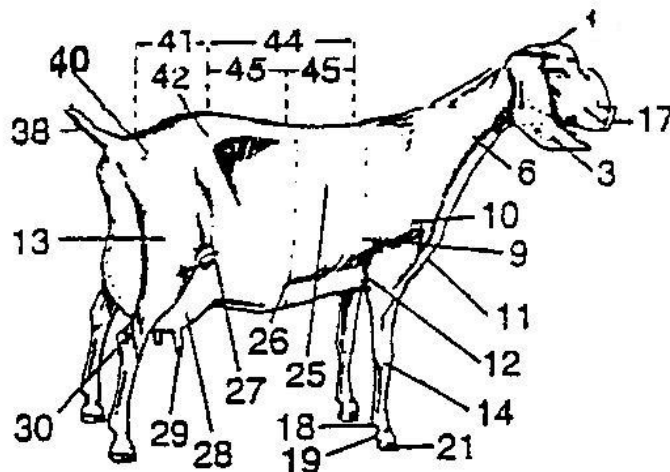
## Beef Cattle

Name the body parts of the beef cattle. Remember to use the word bank!



## Goat

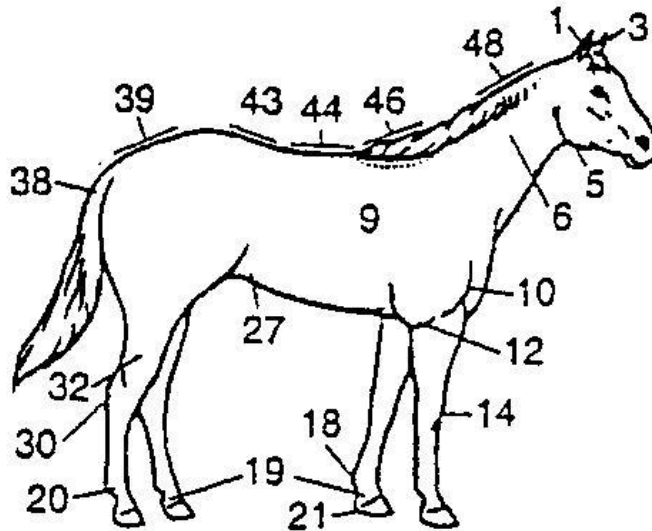
Name the body parts of the dairy goat. Remember to use the word bank!





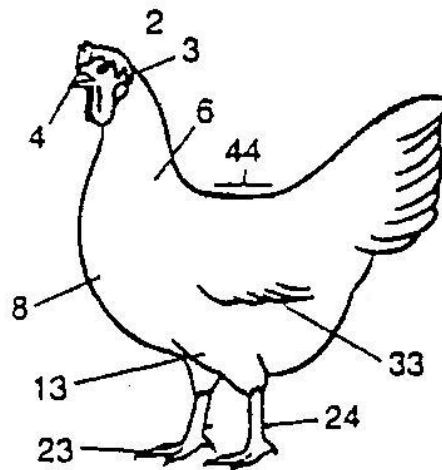
## Horse

Name the body parts of the horse. Remember to use the word bank!



## Poultry

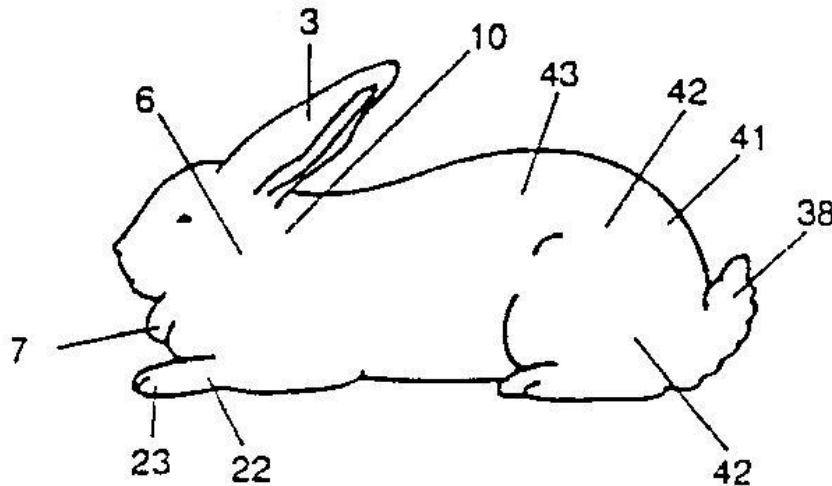
Name the body parts of the chicken. Remember to use the word bank!





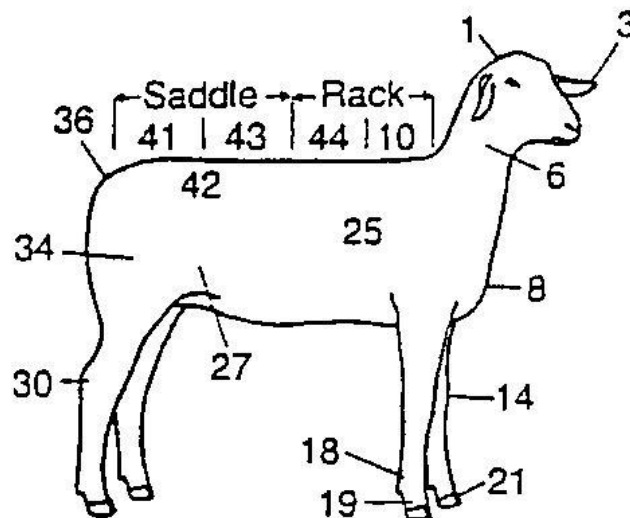
## Rabbits

Name the body parts of the rabbit. Remember to use the word bank!



## Sheep

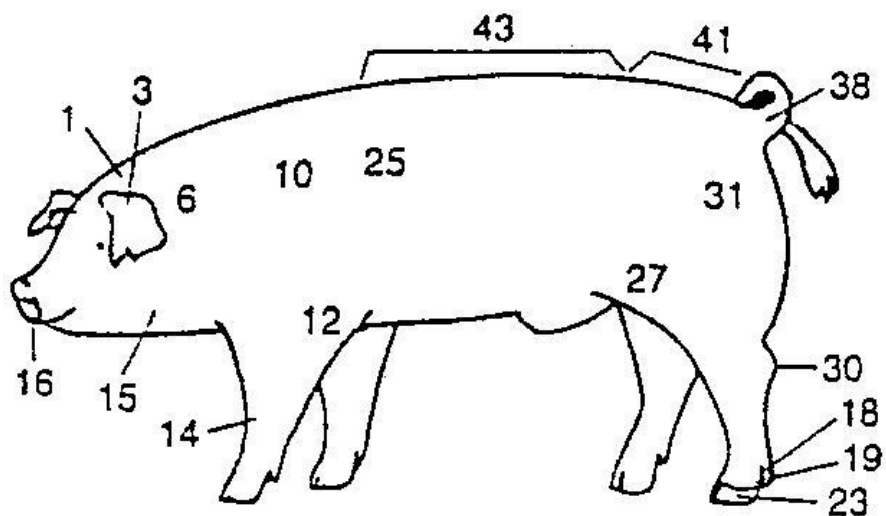
Name the body parts of the sheep. Remember to use the word bank!





## Swine

Name the body parts of the swine. Remember to use the word bank!



### What did you learn?

Did you need to check the answer key to label the body parts? \_\_\_\_\_

Name 3 parts of your animal that you learned in this activity. \_\_\_\_\_

---

---

---



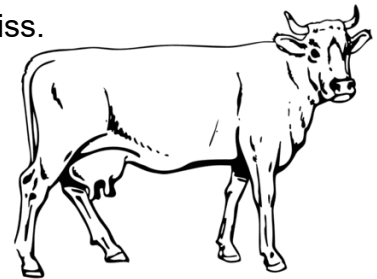
## ACTIVITY 3 – DAIRY COWS

Dairy cows give us most of the milk that we drink. This milk also is used to make many other food items, such as cheese, ice cream, butter, cottage cheese and yogurt. These foods are important for the calcium they contain. Calcium helps us build strong bones and teeth.

Cows are milked twice a day. The dairy farmer uses milking machines for milking. The machines take the milk from the udder and put the milk into a tank. A truck picks up the milk from the farm and takes it to the dairy for pasteurization.

A young dairy cow is called a heifer. After she has had a calf, she can be milked and is called a cow. A male is called a bull. A group of dairy cows is called a herd.

Most major dairy breeds are descended from Northern Europe. There are five major breeds raised by farmers in the United States. These breeds are Jersey, Guernsey, Holstein-Friesian, Ayrshire and Brown Swiss.



### **Materials needed for this activity:**

Activity sheet

Pencil

### **What you will do:**

1. Look at the questions below.
2. Read about dairy cows above to find the answers.

### **List Four or More Dairy Products**

- |          |          |
|----------|----------|
| 1. _____ | 4. _____ |
| 2. _____ | 5. _____ |
| 3. _____ | 6. _____ |

### List the 5 Major Breeds of Dairy Cows

1. \_\_\_\_\_
2. \_\_\_\_\_
3. \_\_\_\_\_
4. \_\_\_\_\_
5. \_\_\_\_\_

### What did you learn?

What dairy breed would you like to exhibit when you are old enough for regular 4-H? \_\_\_\_\_

What is your favorite dairy food? \_\_\_\_\_



## ACTIVITY 4 – BEEF CATTLE

Beef cattle give us lots of meats. The hamburger is the most famous. Beef cattle also give us leather, gelatin, medicines and glue. These are all things that we use every day.

A young female that has not had a calf is called a heifer. The adult female is called a cow. The adult male is called a bull or steer. All young beef cattle are called calves.

Some beef cattle have horns and others are polled. Polled means they were born without horns.

There are over 50 breeds of beef cattle in the United States. Each breed has unique traits.

**Materials needed for this activity:**

Pencil

Activity sheet

Glue

Scissors

**What you will do:**

1. Answer the questions. Read about beef cattle to find the answers.
2. On the following page, cut out the pictures of cuts of meat and glue them into the correct place on the steer.

**List Five Products from Beef Cattle**

1. \_\_\_\_\_

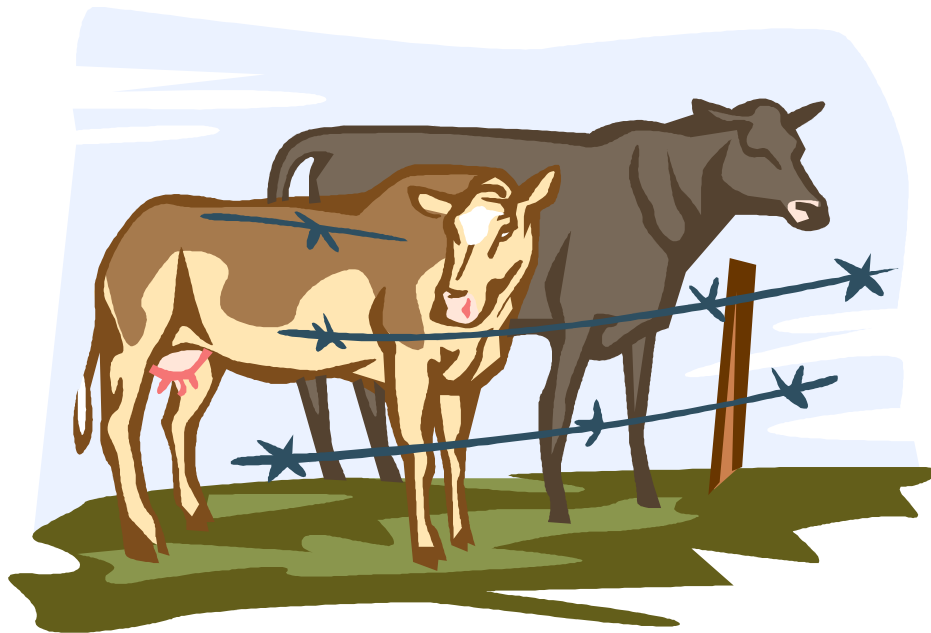
4. \_\_\_\_\_

2. \_\_\_\_\_

5. \_\_\_\_\_

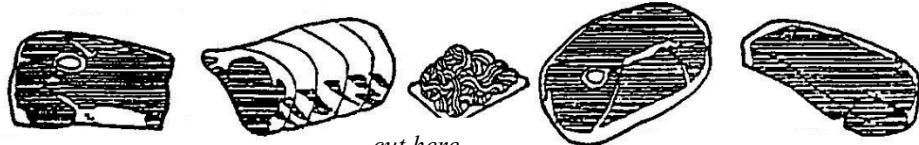
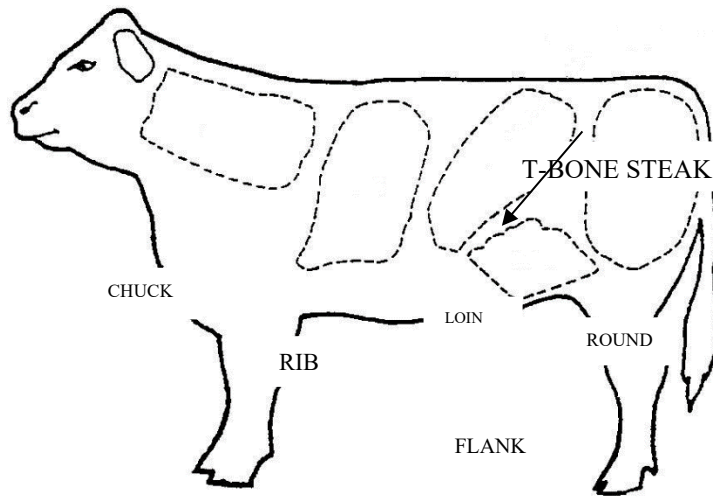
3. \_\_\_\_\_

6. \_\_\_\_\_



## BEEF CUTS

At the bottom of the page, you will find listed some of the favorite “cuts” or kinds of meat that come from beef cattle. Cut out each cut of meat and glue it over the right place on the beef animal where it would be found. Then re-label each “cut.”



*cut here*

Major cuts from the forequarter  
(or front) are chuck and rib.

Hindquarter cuts are loin and round.

**CHUCK**  
Arm Pot-Roast  
or Steak Rib

**RIB**  
Rib Roast  
Small End

**FLANK**  
Hamburger

**ROUND**  
Round

**LOIN**  
T-Bone Steak



### **What did you learn?**

What is your favorite "cut" of beef? \_\_\_\_\_

\_\_\_\_\_

From what part of the beef animal do we get hamburger? \_\_\_\_\_

\_\_\_\_\_

What one other beef cattle product do you use every day? \_\_\_\_\_

\_\_\_\_\_



## **ACTIVITY 5 - GOATS**

The goat is thought to have been the earliest animal domesticated besides sheep and dogs. Cave art 10,000 to 20,000 years old indicates that goats were common and important then. Goats have advantages over other animals. Goats are the most underrated of all domestic animals. They thrive and reproduce in tropical or cold climates and in humid as well as dry regions. Their small size compared to cattle permit them to be maintained in a small area.

There are 60 breeds of goats. The types are dairy, meat and fiber. The facts are that goat meat and milk can be as good as those from any animal. Goats eat a variety of grasses, weeds, leaves, and small branches of bushes or trees. In the U.S. goats are fed alfalfa and other kinds of hay, grains like barley, oats, corn and roasted soybeans.

Like deer, the female goat is called a doe. The male goat is called a buck. Baby goats are called kids. The doe, after 5 months of carrying her kids, gives birth. This is called freshening. Giving birth to the kids brings the doe into milk. The kids only need the milk for 6 to 8 weeks.

Goats of any breed can produce a variety of products. Goats can be grouped into milk, meat, other products and pets. The products from milk are fresh, canned and dried milk, ice cream, yogurt, soft and hard cheese, fudge and soap. Other products are meat (called chevron), leather, cashmere and mohair.

The six dairy breeds that are common in the U.S. are Alpine, LaMancha, Nubian, Oberhasli, Saanen, and Toggenburg. Some of these breeds are certain colors and others have other breed characteristics. A LaMancha, which is the only goat breed native to the U.S., has a very small ear like a gopher or an elf. The Nubian goat breed is known for being the most talkative of all the goat breeds and has long wide ears like a banana peel. All other goat breeds have upright ears and certain color requirements.

A properly fed doe will give one or more gallons of milk a day. Goat milk is more easily digested than cow milk, having a finer curd and smaller fat globules. Some people's bodies do not digest cow milk but can digest goat milk.

All goat breeds produce meat. The Boar and Pygmy are the meat breeds common to the U.S. Chevron is a delicious meat product that can be eaten baked, fried, grilled, BBQ, stewed and made into jerky. It is low in fat and cholesterol.

The fiber goat that is most popular in the U.S. is the Angora. The Angora is small in size with twisted horns. It has white and cream colored locks and ringlets of hair. The hair is sheared yearly from the goat.

**Materials needed for this activity:**      Activity sheets      Pencil

**What you will do:**

1. Read about goats and answer the questions.
2. See if you can name the different breeds of goat.



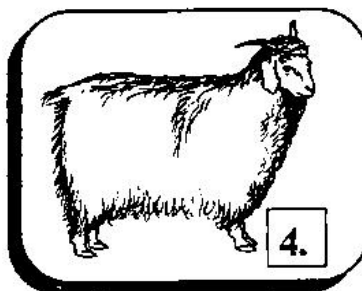
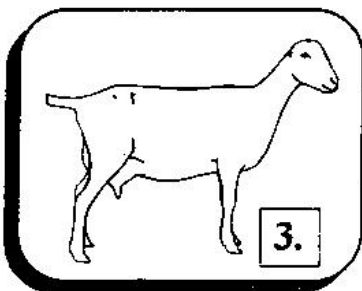
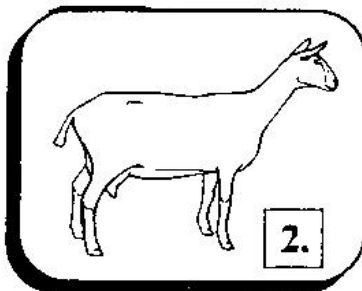
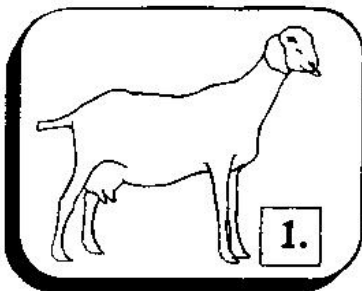
### List Six Products from the Goat

1. \_\_\_\_\_
2. \_\_\_\_\_
3. \_\_\_\_\_
4. \_\_\_\_\_
5. \_\_\_\_\_
6. \_\_\_\_\_

### Name the Six Breeds of Goat

1. \_\_\_\_\_
2. \_\_\_\_\_
3. \_\_\_\_\_
4. \_\_\_\_\_
5. \_\_\_\_\_
6. \_\_\_\_\_

Identify the breeds in these pictures:



1. \_\_\_\_\_
2. \_\_\_\_\_
3. \_\_\_\_\_
4. \_\_\_\_\_

**What did you learn?**

What goat food product have you tried? \_\_\_\_\_

\_\_\_\_\_

What did you think of that food? \_\_\_\_\_

\_\_\_\_\_

Was it difficult to match the goat breeds? \_\_\_\_\_

Who helped you? \_\_\_\_\_



**ACTIVITY 6 – HORSE**

All horses need special care and training. It takes about two years for a young horse to be big enough to ride.

There are many tools for grooming and caring for horses, as well as “tack” or equipment that the horse wears. There are three styles of riding equipment, which includes the saddle, bridle and halter. These styles are Western, Hunt Seat and English Seat.

The male horse is called a stallion. The female horse is called a mare. A young horse, less than one year old, is called a foal. A young female horse is called a filly, and a young male horse is called a colt. A group of horses is called a herd.



**Materials needed for this activity:**

Activity sheets

Pencil

**What you will do:**

1. Read the names of breeds of horses and find these breeds in the word search.
2. Label the parts of the “tack” needed to care for a horse. Use the word bank.

**HORSE BREEDS WORD SEARCH**

Find the following names of different breeds of horses in the word search.

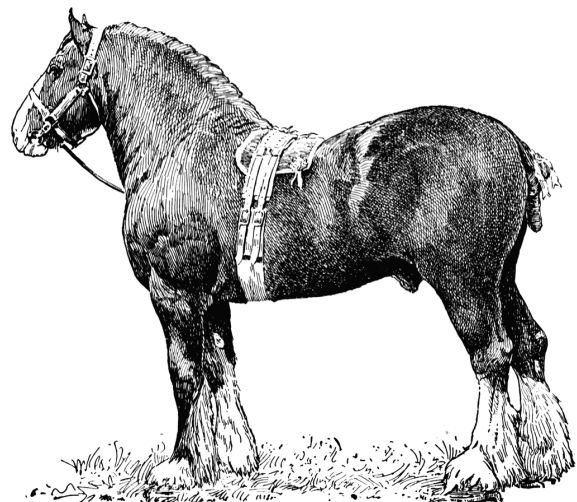
Arabian  
Buckskin  
Thoroughbred  
Clydesdale  
Pinto

Palomino  
Quarter  
Saddlebred  
Welsh

Standardbred  
Percheron  
Belgian  
Paint

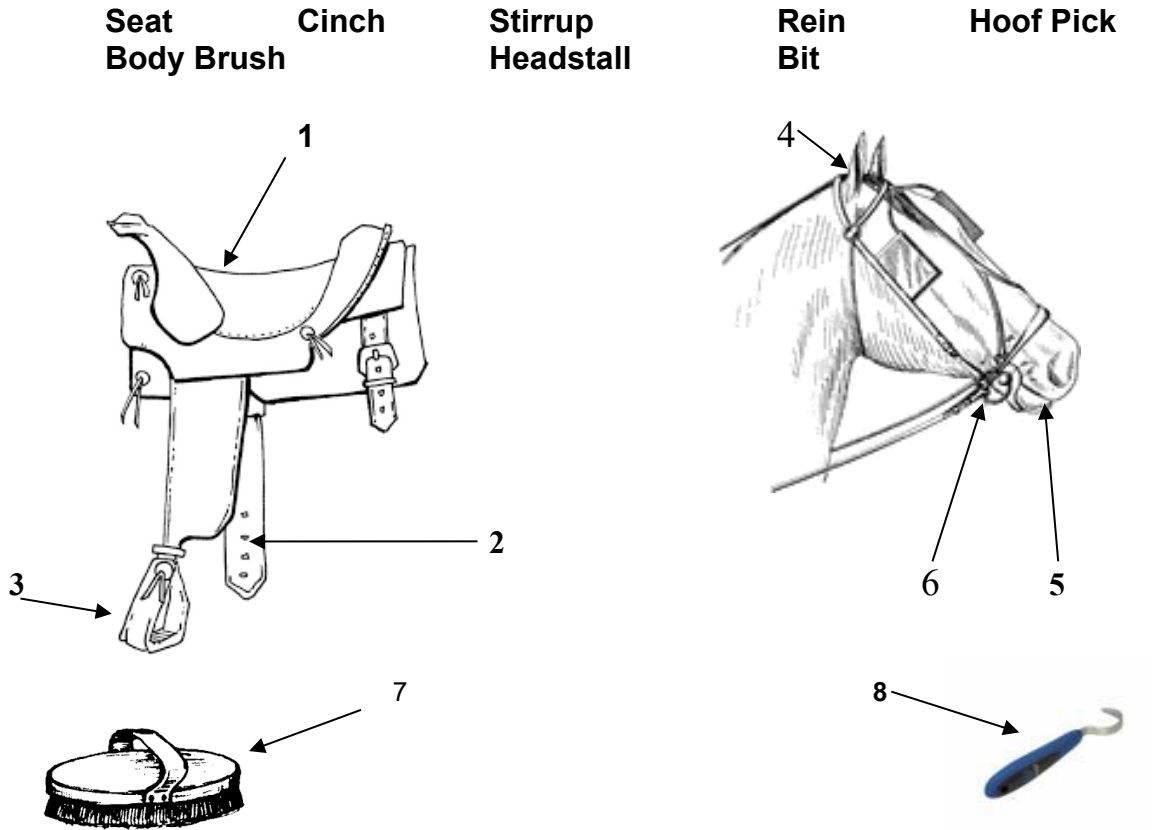
Morgan  
Appaloosa  
Shetland  
Hackney

A	Q	B	C	B	E	L	G	I	A	N	D	F	E	G
T	U	H	I	P	I	N	T	O	W	J	K	Y	L	M
N	A	M	O	S	A	D	D	L	E	B	R	E	D	A
P	R	O	Q	R	S	L	T	U	L	V	W	N	X	P
Y	T	R	Z	A	C	B	O	C	C	M	N	K	O	P
P	E	G	D	E	G	F	H	M	H	I	M	C	K	A
A	R	A	B	I	A	N	V	X	I	D	M	A	M	L
I	D	N	A	L	T	E	H	S	S	N	I	H	I	O
N	C	D	E	P	E	R	C	H	E	R	O	N	N	O
T	F	B	U	C	K	S	K	I	N	S	A	B	G	S
K	G	H	C	L	Y	D	E	S	D	A	L	E	O	A
L	I	J	D	E	R	B	D	R	A	D	N	A	T	S
T	H	O	R	O	U	G	H	B	R	E	D	M	N	O



## “Tack”

Name the following “tack” or equipment needed for a horse. Use the words below to fill in the blanks. The answers are in the back of this manual if you get stuck.



1. \_\_\_\_\_

2. \_\_\_\_\_

3. \_\_\_\_\_

4. \_\_\_\_\_

5. \_\_\_\_\_

6. \_\_\_\_\_

7. \_\_\_\_\_

8. \_\_\_\_\_

### What did you learn?

Name the “tack” you would use to brush your horse after a ride. \_\_\_\_\_

What is your favorite horse breed? \_\_\_\_\_



## ACTIVITY 7 – POULTRY

Chickens, ducks, geese, turkeys, pigeons and peafowl are all called poultry. There are many types and breeds of each of these. Each breed is different in size, shape and color.

Most people are familiar with chickens. Female chickens are called hens. Male chickens are called roosters. A young chicken is called a chick. A group of chickens is called a flock.

Most chickens lay one egg each day. If the eggs are incubated by the hen sitting on the nest of eggs to keep them warm or in a special machine called an incubator, then a chick will hatch from the egg.

It takes 21 days to hatch a chick from an egg.

If the eggs are not incubated, they are used for eating. We eat eggs fried, scrambled, poached, or hard and soft boiled.

Poultry is also used to produce meat. The most common are chicken fryers and roasters. Don't forget that turkey for our Thanksgiving dinner!

**Materials needed for this activity:**      Activity sheets      Pencil

### **What you will do:**

1. Read about the parts of the egg and label the drawing.
2. Find the rooster body parts in the word search.



## Definitions of Egg Parts

**Air Cell** – The pocket of air at the large end of the egg.

**Albumen** – The white of the egg. This gives the growing embryo food and water.

**Chalazae** – The two twisted cords at each end of the yolk. These keep the yolk from moving around and sticking to the shell.

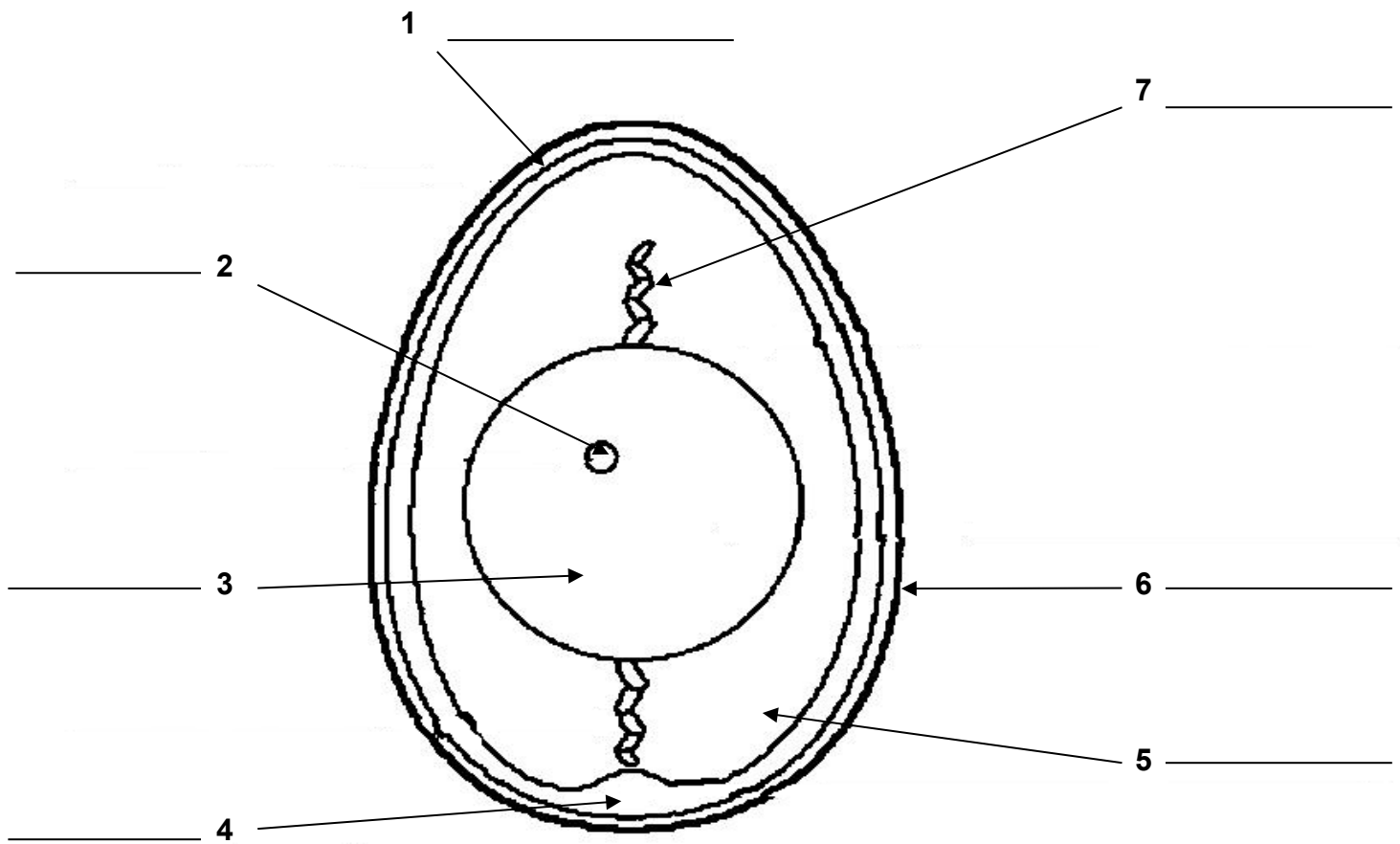
**Germ Spot** – The “white” spot on the yolk where the embryo develops.

**Membrane** – The two thin layers inside the egg shell.

**Shell** – The hard, protective outer covering of an egg.

**Yolk** – The yellow of an egg. This is where the embryo gets most of its food.

**Match the definitions above to the egg parts you see below.**





## ROOSTER PARTS WORD SEARCH

Find the following names of body parts belonging to a rooster in the word search.

comb  
breast  
shank  
primaries  
tail feathers  
earlobe

beak  
keel  
toes  
secondaries  
saddle  
eye

wattles  
thigh  
spur  
saddle feathers  
buck  
blade

hackle  
hock  
fluff  
sickle  
cape

T	A	I	L	F	E	A	T	H	E	R	S
A	P	L	E	O	P	A	E	B	Y	S	A
C	A	P	E	U	O	L	C	H	E	C	D
B	E	A	K	L	D	W	L	O	D	R	D
N	H	M	B	D	S	A	T	C	M	N	L
T	E	C	A	P	I	T	S	K	T	B	E
K	D	S	C	U	C	T	A	P	O	L	F
E	F	H	A	C	K	L	E	D	U	N	E
B	L	A	D	E	L	E	R	B	T	R	A
O	U	N	E	F	E	S	B	U	C	K	T
L	F	K	G	P	S	K	E	T	C	L	H
R	F	C	T	H	I	G	H	O	G	E	R
A	S	E	C	O	N	D	A	R	I	E	S
E	A	P	R	I	M	A	R	I	E	S	T

### What did you learn?

What is your favorite way to eat eggs? \_\_\_\_\_

\_\_\_\_\_

Name a body part of the rooster and tell where it is located. \_\_\_\_\_

\_\_\_\_\_





## ACTIVITY 8 – RABBITS

Rabbits, like other farm animals, need food, water and shelter. Rabbits live in a hutch. This is made of strong wire with a box inside to give them shelter from bad weather. The hutch should give a rabbit fresh air so they are cool and comfortable in the summer and warm in the winter.

Rabbits need to be fed a balanced diet. Rabbit pellets are made of alfalfa and grain. Fresh water is also very important and must be provided daily.

The male rabbit is called a buck. The female rabbit is called a doe. The young rabbit is called a kit. When a kit is born, it has no hair and the eyes are closed. The young kit must stay with the doe for six to eight weeks after birth.

Rabbits are raised for meat and for their skins. The skins are used to make cloth, felt, fur coats and angora for sweaters.

There are many breeds of rabbits. Some of the more common are Rex, Californian and English Lop.

Rabbits, like other farm animals, are not pets. You need to be careful as they can scratch, kick and bite. It is best to wear long sleeves when handling rabbits.

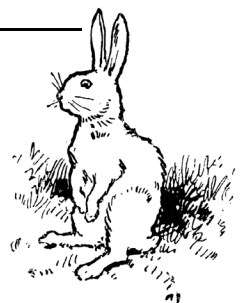
**Materials needed for this activity:**      Activity sheet      Pencil

### **What you will do:**

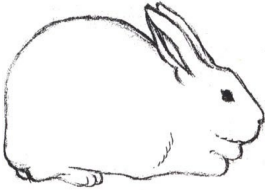
1. Fill in the blanks using the information above.

### **List Four Products From the Rabbit**

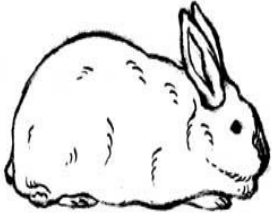
- |          |          |
|----------|----------|
| 1. _____ | 3. _____ |
| 2. _____ | 4. _____ |



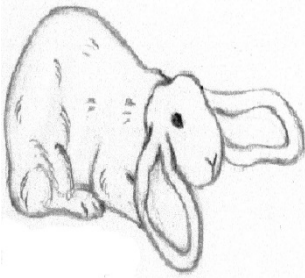
**Unscramble Three Breeds of Rabbit**



**XRE** \_\_\_\_\_



**NCALAIROFN** \_\_\_\_\_



**GLHSNEI PLO** \_\_\_\_\_

**What did you learn?**

Can you name any other breeds of rabbits? \_\_\_\_\_

What breed would you like to raise when you are old enough for regular 4-H?

\_\_\_\_\_

Name a product that comes from the rabbit. \_\_\_\_\_

\_\_\_\_\_

What is the name of a rabbit's home? \_\_\_\_\_



## ACTIVITY 9 – SHEEP

Sheep are raised in all parts of the world. They provide meat for food and wool for clothing.

Sheep are raised two ways in the United States. The first way has large flocks of 1,000 – 2,000 sheep ranged on large tracts of land. Here sheep graze on pasture grass and shrubs. The sheep can live without water for long periods of time. This helps the sheep survive on these dry plains.

In the second way, sheep are raised in smaller numbers on a farm in a fenced pasture. They graze on grasses and shrubs and are also fed hay and grains.

A female sheep is called a ewe. The male is called a ram. A young sheep is called a lamb. A group of sheep is called a flock.

There are 23 breeds of sheep. Some of the more common are Suffolk, Columbia, Hampshire, Merino, Dorset, Finnsheep, Cheviot and Southdown.

**Materials needed for this activity:**      Activity sheet      Pencil

### **What you will do:**

1. Read in this manual about sheep. Use what you have read to answer the questions.
2. Look in your closet and read the labels to find out what clothing came from sheep.



### Name Eight Breeds of Sheep

1. \_\_\_\_\_
2. \_\_\_\_\_
3. \_\_\_\_\_
4. \_\_\_\_\_
5. \_\_\_\_\_
6. \_\_\_\_\_
7. \_\_\_\_\_
8. \_\_\_\_\_

### Check Out Your Closet

Look around your house, in the closet, in drawers and on your bed. Read the labels to find items that are made from wool. Remember we get wool from sheep. If you can't find any items made from wool, go to a store to see what you can find.

ITEM	% of WOOL	WHERE FOUND

### **What did you learn?**

Was it hard to find things containing wool in your closet? \_\_\_\_\_

Were you surprised at how many things you found? \_\_\_\_\_

What kinds of things did you find? \_\_\_\_\_

\_\_\_\_\_

What season of the year do people wear the most wool clothing? \_\_\_\_\_



## **ACTIVITY 10 – SWINE**

Swine give us a lot of meat. The meat, pork, is often called, “the other white meat.” Swine also provide lard, leather, brushes, glue, medicines and other products.

Swine have a stout, heavy body covered with coarse bristly hair. They have short tails that are usually curled. They have small eyes, poor eyesight, and use their sense of smell to find their food.

Swine have no sweat glands. They need shaded areas to keep them cool in hot summer weather. They also keep cool by panting and swallowing mud. Swine also need to drink lots of water.

The female swine is called a gilt. If a female has young, she is called a sow. The male is called a boar. All young swine are called pigs. Pigs are born in groups called a litter. A group of swine is called a herd.

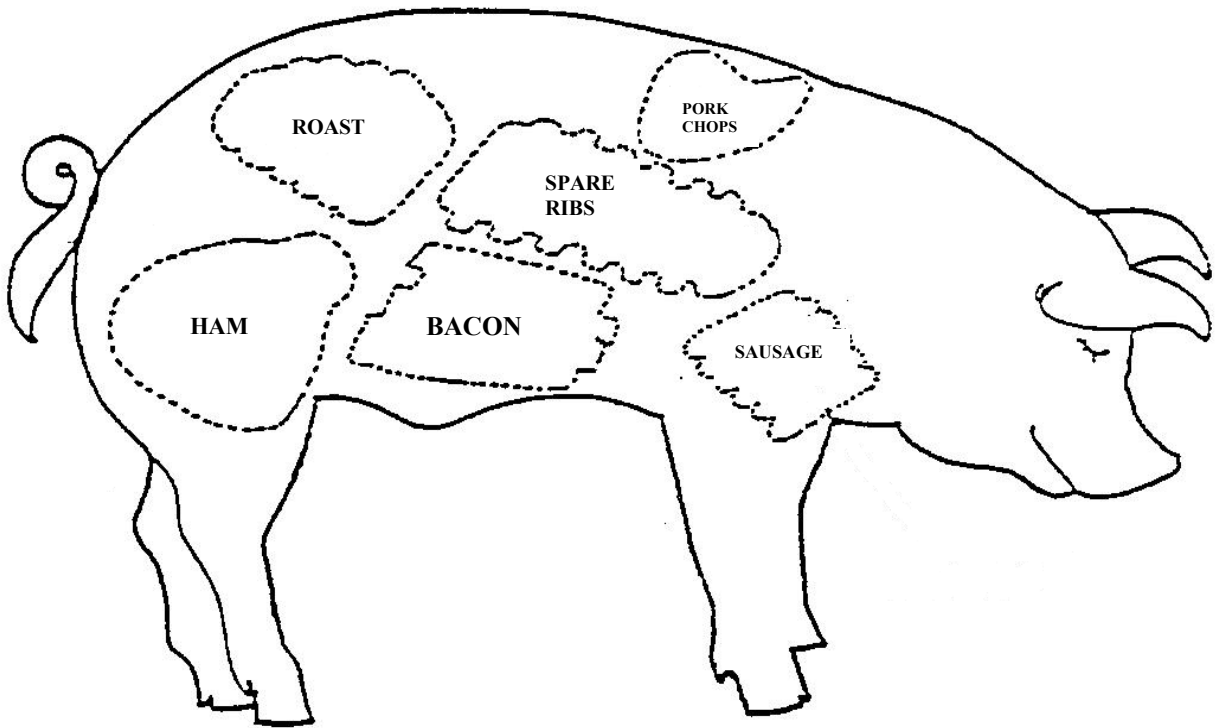
**Materials needed for this activity:**      Activity sheet      Pencil

### **What you will do:**

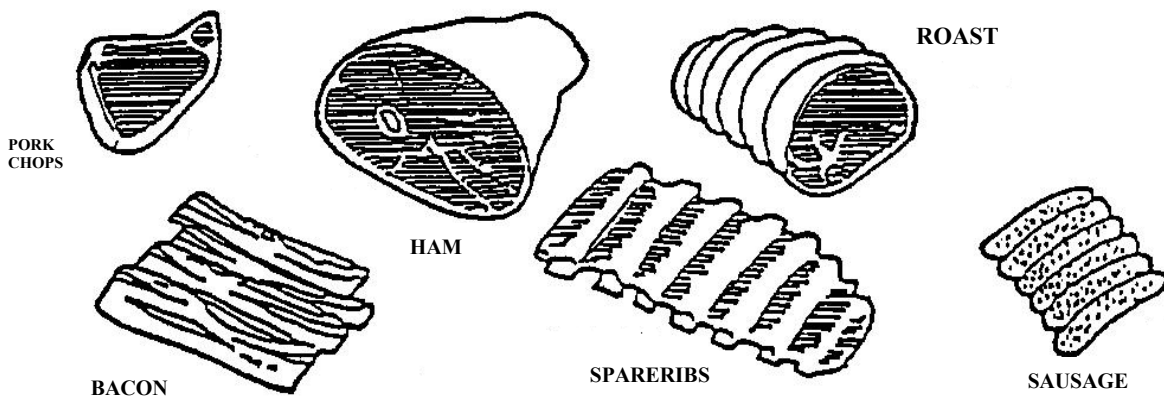
1. Read in this manual about swine. Answer the questions.
2. Cut out the favorite meat cuts and glue them on the swine pictured on the next page.

## PORK CUTS

Look at the swine in the picture. Cut out the favorite meat cuts and glue them on the swine in their proper place.



*Cut here*



### List Five Products from Swine

1. \_\_\_\_\_
2. \_\_\_\_\_
3. \_\_\_\_\_
4. \_\_\_\_\_
5. \_\_\_\_\_

### What did you learn?

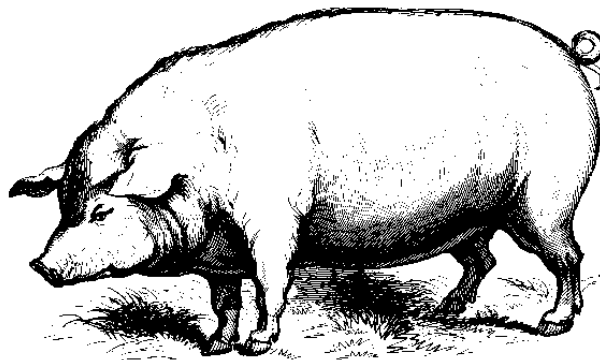
What is your favorite food from swine? \_\_\_\_\_  
\_\_\_\_\_

Were you surprised to learn what meats came from swine? \_\_\_\_\_

What food surprised you the most? \_\_\_\_\_

What is one thing you learned about swine that you didn't know before reading this manual?

\_\_\_\_\_  
\_\_\_\_\_





## ***Answers:***

### Pages 7-12 Farm Animal *Body Parts*

1. poll	13. thigh	* 25. ribs	37. switch
* 2. comb	* 14. knee	26. barrel	* 38. tail
* 3. ear	15. jowl	27. stifle	39. croup
* 4. beak	* 16. snout	* 28. udder	40. thurl
5. throat latch	17. muzzle	* 29. teat	41. rump
* 6. neck	18. dewclaw	30. hock	* 42. hip
7. dewlap	19. pastern	* 31. ham	43. loin
8. breast	20. fetlock	32. gaskin	* 44. back
9. heart girth	* 21. hoof	* 33. wing	45. chine
10. shoulder	* 22. foot	34. leg of lamb	46. withers
11. brisket	* 23. toe	35. round	47. crops
12. elbow	24. spur	36. dock	48. crest

\* Easier parts to learn

### Pages 19 Identify Goat Breeds

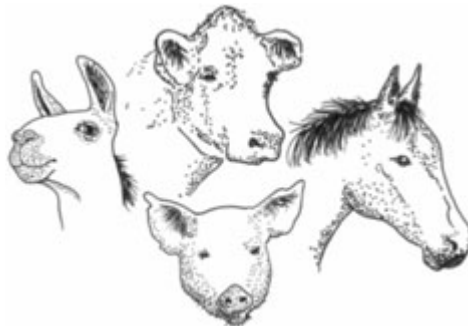
1. Nubian      2. Toggenburg, Saanen, Alpine or Oberhasli      3. LaMancha      4. Angora

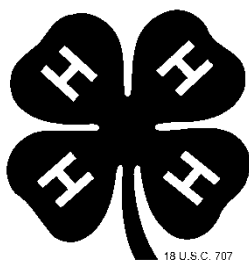
### Pages 21 Horse “Tack” or Equipment

1. Seat      2. Cinch      3. Stirrup      4. Headstall      5. Bit      6. Rein  
7. Body Brush      8. Hoof Pick

### Pages 24 Parts of the Egg

1. Membrane      2. Germ Spot      3. Yolk      4. Air Cell      5. Albumen      6. Shell  
7. Chalazae



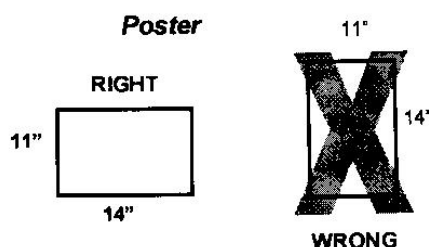


# What to Exhibit

## *Farm Animals*

Choose one farm animal from this manual for your project. *You do not need to do all the activities in this manual. Look at the ones that deal with your chosen animal.*

Make a Farm Animals poster. Your poster must be exactly 11 x 14 inches, displayed horizontally (wider than it is tall) and attached to a stiff backing (like cardboard). You may use foam board. Foam board is already stiff and does not require additional backing. Your poster must be covered with clear plastic. This can be a poster sleeve. If you have made a three dimensional item, you may use clear vinyl. Your poster must have a title.



**NOTE:** No oversize posters will be accepted for exhibition.  
No un-mounted items will be accepted for exhibition.

**Choose one of these ideas for your poster!**

- A picture you have drawn of your animal.
- A story about your animal.
- A collection of cut out pictures or photographs of your animal.
- A combination of any of the above.

**NOTE:** If you are unable to pick your project up on Project Release Day, please make arrangements to have it picked up. All projects must be removed from the exhibit building on that day. There is no available storage space for unclaimed projects.

**All posters must include: (both are found on page 35)**

- Record Sheet (attached to the back of the poster).
- Exhibit Tag (attached in the lower right front corner of the poster).

## Exhibit Tag:

<b>Mini 4-H</b>						<b>Farm Animals</b>
	<b>Name</b>		<b>City</b>		<b>Grade</b>	
					<b>School</b>	

## Record Sheet

-----Cut here-----

Name \_\_\_\_\_ Grade \_\_\_\_\_

Why did you choose this project? \_\_\_\_\_

\_\_\_\_\_

How much time did you spend on this project? \_\_\_\_\_

\_\_\_\_\_

Who helped you with your project? \_\_\_\_\_

What is the most important thing you learned in this project? \_\_\_\_\_

\_\_\_\_\_

