

# Mini 4-H Pig



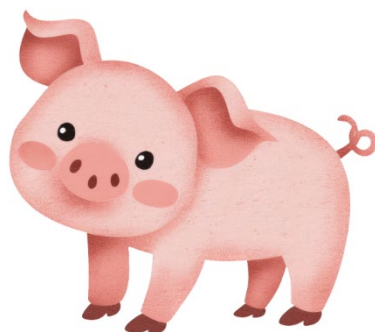
## Kindergarten, 1st & 2nd Grades

Purdue University is an equal opportunity/equal access/affirmative action institution.

## Mini 4-H Parent's Page

As a Mini 4-H parent, your job will be to guide and encourage your child through this project. We suggest that you do not complete the activities for them. Instead, help them, guide them, work with them, and let them do all that they possibly can. The 4-H motto is “Learn by doing” and is the best educational tool that we can provide for youth.

If you have any questions about this project, please contact  
Purdue Extension- Hancock County at 317-462-1113 or  
[hancockces@purdue.edu](mailto:hancockces@purdue.edu)



## Mini 4-H

Welcome to Mini 4-H! You are now a member of the 4-H family. Mini 4-H'ers have lots of fun. There are many activities for you to explore. You can try new things. You can share it with your friends and family.

An adult can help you with your project, and you can bring your project to the 4-H fair. Many people will be able to see what you have done. You will receive a ribbon made just for Mini 4-H.

The 4-H fair is an exciting time for 4-H members and families. It is a week that allows community youth to show their talents, interests, and enthusiasm for learning!

4-H Symbol: A four-leaf clover with an "H" in each leaf

4-H Colors: Green and white

4-H Motto: To make the best, better

4-H Pledge: I pledge my Head to clearer thinking



My Heart to greater loyalty

My Hands to larger service and

My Health to better living,

For my club, my community

my country, and my world.

## Mini 4-H Pig

Welcome to the Mini 4-H Pig project! You are going to learn a lot of exciting things about pigs! Here are some fun facts to get you started!

1. Pigs are easy to handle.
2. Pigs are gentle and friendly.
3. Pigs are very smart.
4. Pigs love mud!

## What Will I Do?

Depending on what grade you are in you will complete the project by:

- Kindergarten: exhibit a poster with pictures of your favorite breed of pig. Posters are displayed horizontally; 22x14 and mounted on a firm backing and covered in clear plastic. Attach a label to your exhibit.
- 1<sup>st</sup> Grade: Exhibit a poster about a product we get from pigs or how to care for a pig. Posters are displayed horizontally; 22x14 and mounted on a firm backing and covered in clear plastic. Attach a label to your exhibit.
- 2<sup>nd</sup> Grade: Learn how to care for a pig and the proper way to show one. You will have the opportunity to show a pig at the Hancock County Fair. Please contact the Extension Office by May 15<sup>th</sup> to be paired with a swine member for the mini pig show.

## How to Show a Pig

When your class number is called, you will enter the holding ring with your pig. You will pen in one of the holding pens. The judge will one 4-H'er at a time to bring their pig out of the pen. You will show your pig around the ring using a show whip. You will use the whip by the pig's shoulders and head to guide it. There will be adults and older 4-Hers in the show ring to help you pen your pig. The judge may ask a question or two about the pig project. Do not get scared if you don't know the answer, the judge will help you!

## Boar, Sow, Gilt or Barrow?

- A sow is a mother pig! Sows give birth after 114 days. They usually have 8-12 piglets in a litter.
- A female pig is a gilt! Around the age of eight months, a gilt is big enough to breed. She becomes a sow after she gives birth or farrows a litter of piglets
- A boar is a male pig! It is the father of the piglets
- A barrow is a male pig that has been castrated. Barrows are market animals and usually weigh 230-270 when they are sold.



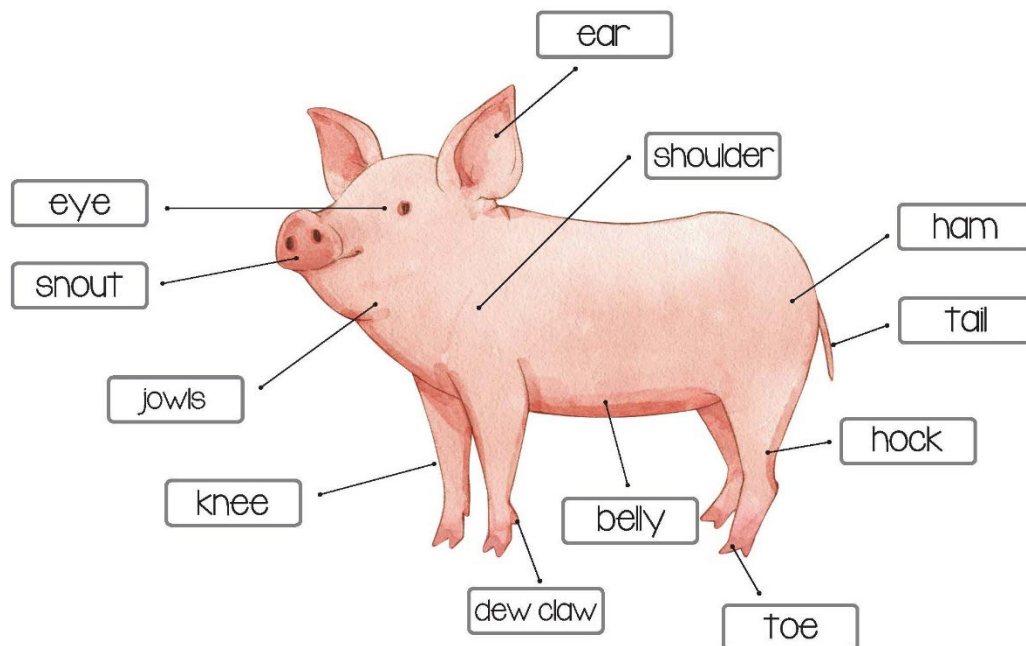
## What Do Pigs Eat?

Pigs are non-ruminant animals, which means they have a digestive system similar to humans. They cannot digest grasses, like cattle. Pigs can only digest feed such as corn and soybean meal which is ground into small particles.

Corn is an excellent energy feed for pigs. It is also very tasty! Corn by itself cannot supply all of the vitamins and minerals a pig need. The rest of the nutrient's pigs need are supplied through soybean meal and minerals. Be sure to always provide clean, fresh water to your pig.

## Parts of a Pig

Become familiar with the part of a pig!





## Breeds of Pigs

There are 11 common breeds of show pigs:

Berkshire, Chester White, Duroc, Hereford, Hampshire, Landrace, Poland China, Spotted, Tamworth, Yorkshire, and Crossbred



Berkshire



Chester White



Duroc



Hereford



Hampshire



Landrace



Poland China



Spotted



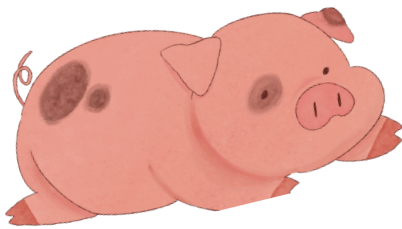
Tamworth



Yorkshire



Crossbred



# All About Pigs!

P T S E T Q C A Z D K P L S O W I L N P  
G J W F T J U O V T A B I H S A W T J K  
G M I J C Q P T Y M E E G G D R G T S D  
J P N L X K K P Y Q L R N Y C H M E H D  
K Z E U D Z T L J M T K H G Q W U V V P  
T S V G L G N I A C R S T N Q B N W Z V  
X L F V K J A G T N T H T O H E G X C B  
Y O R K S H I R E E D I C A R P X I C X  
K F X R P J Y J F K L R R S M X W P L C  
C I X H S O O C J B Y E A E H W T H G T  
P P J A P H E R E F O R D C V J O D O H  
I T M M O D E M I E L A C F E G E R W U  
G E B P T D B N K E V N R X S A Z Q T U  
L I R S T Q A O V H T A O V S M E Z M H  
E F H H E C M P M S D W S C Y B D H M Y  
T D R I D Q O J T D X R S I H A X D D S  
M U Q R E N R R W K H V B T M R L K D K  
U R W E G X G Y N H B N R G L R D B Z Y  
C O J P A P B Z E L A M E H R O E Q N S  
D C Z R I F D L N S C L D H Z W X I E B

berkshire

hampshire

crossbred

gilt

yorkshire

hereford

landrace

corn

tamworth

barrow

piglet

boar

swine

duroc

spotted

pig

sow