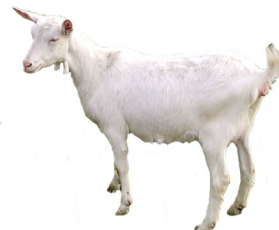


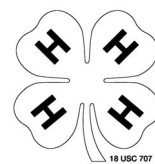
Hendricks County

Mini 4-H



Developed by:

Karla Smith, Program Assistant-Purdue Extension Hendricks County



Mini 4-H Parent's Page

We welcome you and your child to the Mini 4-H program. Mini 4-H is for youth who are in either first or second grade during the current 4-H year. Mini 4-H is designed to supplement and introduce both first and second graders to the Hendricks County 4-H program.

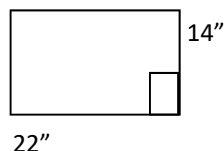
As a Mini 4-H parent, your job is to guide your child through the activities. It is suggested that you do not complete the activities for them. Instead, help them, guide them, work with them, and let them do all that they possibly can. Learning by doing is the best educational tool that we can provide for our youth.

Additionally, the Mini 4-H program is set up to allow your child to exhibit a project at the 4-H Fair. This project is based on information within this manual. The 4-H Fair is an exciting time for 4-H members and families. It is a week that allows community youth to showcase their talents, interests and enthusiasm for learning.

Mini 4-H is fun! Your child will certainly enjoy it. You can have fun too, by guiding and helping as your child participates in the program. Encourage and praise your child as he/she has fun learning and sharing with you.

Rules

1. Mini 4-H is open to any boy or girl who is enrolled in either the first or second grade on January 1st of the current year.
2. Any Mini 4-H participant may enroll in one (1) or two (2) projects. There are 15 projects to choose from. **Participants may exhibit only one (1) activity from a project book.** Additional activities can be done at home, but will not be exhibited.
3. Mini 4-H participants enroll in the County Mini 4-H club, and their projects are done at home.
4. **ALL POSTER EXHIBITS MUST:**
 - A. Have a solid, stiff backing, which is 14" high by 22" wide. This can be HEAVY cardboard or foam core board. The board must be able to stand by itself (Foam core board is available in the Extension Office for a minimal cost)
 - B. Be positioned HORIZONTALLY.
 - C. Have a total exhibit board no larger than 14" high by 22" wide.



All youth will need to complete Enrollment via 4Honline and Fair Entry will need to be completed by July 1st of the current school year. Exhibit Tags will be ready the week before Fair. More information will be sent home as the Fair approaches.

- D. Be COMPLETELY COVERED with CLEAR PLASTIC material. (Available in the Extension Office for a minimal cost.)
5. Mini 4-H participants will complete activities in the book. The Record Sheet located in the back of the project book needs to be completed and will be turned in with their exhibit at the Fair.

Mini 4-Her's Page

Welcome to Mini 4-H! You are now a member of the 4-H family. You are a special person. Mini 4-Her's have a lot of fun! There are many activities for you to explore. You can try new things. You can share it with your friends and family. Mom, Dad, or another adult can help you with your project. Bring your project to the 4-H Fair and lots of people will be able to see what you have done. You also get a ribbon made just for 4-Her's.

Here a few things to know about 4-H.

The 4-H Symbol: A four-leaf clover with an "H" on each leaf

4-H Colors: Green and White

The 4-H Motto: "To make the best, better"

4-H PLEDGE

I pledge my **HEAD** to clearer thinking,

I promise to use my head to make good choices.

my **HEART** to greater loyalty,

I promise to use my heart to be a good friend.

My **HANDS** to larger service,

I promise to use my hands to do helpful things for others.

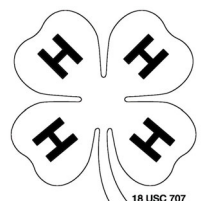
And my **HEALTH** to better living,

I promise to take care of my body and to show others to live in a healthy way.

For my club, my community,

I promise to help my group, my community,

My country, and my world



18 USC 707

Farm Animals Activities

There are many kinds of farm animals. People have farm animals for fun, and to make money. Do you have any farm animals at home?

When you are hungry, you go to the kitchen to eat. Animals also look for food when they are hungry. Some animals get their food from the ground if they live outside. Farm animals get their food from a farmer who feeds them.

Farm animals eat a lot of food. Chickens like corn, cows like hay and horses like oats. Most feed is grown by farmers. Some people buy their feed and grain at local feed stores. Grain is a kind of feed (corn is a grain). Just like you, animals get thirsty, too. They need a lot of water.

Farm animals are very important to us. Not only do they help feed us, but they also give us a lot of other things. Do you have a belt? Some belts are made of leather. Leather comes from a cow. Do you have warm sweaters? Many sweaters are made of wool. Wool comes from sheep. Everywhere we look, there are things that farm animals give us.

This project will help you learn to read and follow directions, choose an activity, be neat, and be creative.

Before you get started:

- Pick an activity.
- Read the directions carefully.
- Make sure you have all of the needed materials.
 - Ask an adult or teenager to help you.
- Clean up your work area and put your supplies away when you are finished.
 - Complete your Mini 4-H Book pages.
- ENJOY!

Exhibit

First Grade:

- Product from “Barn “yarn” Animals” or “Animal Tracks”
- Completed Record Sheet

Second Grade:

- Product from “Farm Diorama” or “What Do Farm Animals Give Us?”
- Completed Record Sheet

First Grade

Barn “Yarn” Animals

Needed Materials:

- 3 Styrofoam eggs
- White craft glue
- Fluffy, Curly and Smooth Yarn
- Felt (pink, tan, white)
- Scissors
- Extra-fine Permanent Marker
- 9” throw away plate
- 6 Black Ball-headed Straight Pins

Directions:

-Flatten the round end of each egg by pressing it on a hard surface.

-Hold the flat end and put glue on the opposite half of the egg. Press the end of the yarn into the glue at the tip and press it on to the glued surface, turning as you go.

-Cut the yarn when you reach the middle.

-Flip egg, and put glue on the other half. Start at the flat end, and keep pressing down the yarn until you have covered the entire egg.

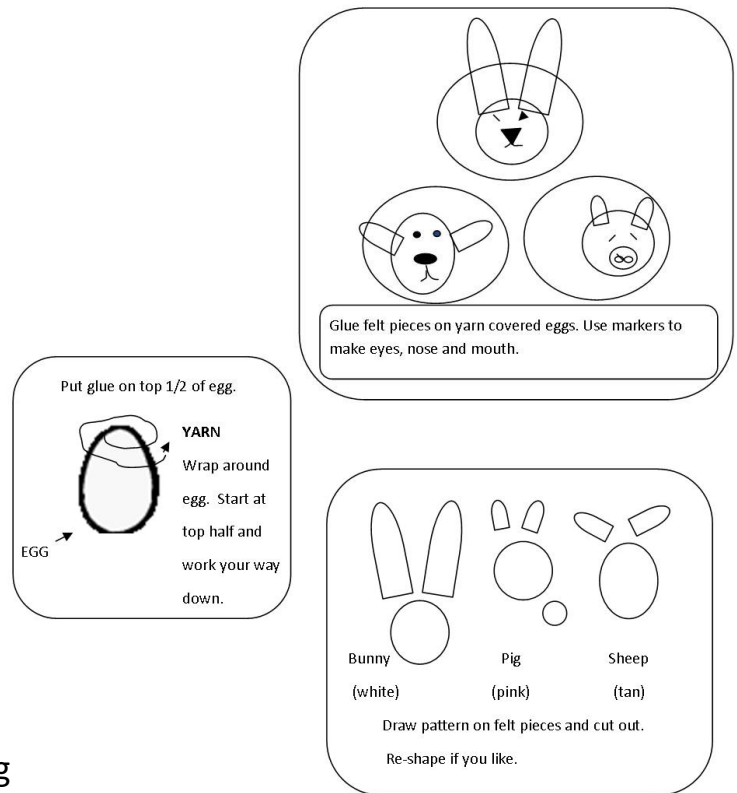
-Cut ears, a pig nose, and faces from felt. See pattern ideas above. To make ears crease, dab glue on the bottom edge and pinch felt from the back. Pin or squeeze until dry.

-Glue the ears and noses to each animal, and attach faces to the flat ends of the eggs.

-Use ball-headed pins for the eyes, then draw on the noses and mouths with a marker.

-Display on a 9” plate.

If planning to exhibit this option at the fair, be sure to add the information to FairEntry once the system opens. This will be used to print your exhibit tag for display at the fair.



Animal Tracks

Needed Materials:

- **Animal Tracks** page— in this manual
- Crayons or colored pencils
- **Farm Animal** pages—in this manual
- Poster board
- Plastic covering

Directions:

Follow directions on **Animal Tracks** page. Cut each box out and save.

Color the animals on the **Animal Picture** pages. Cut out each animal.

Mount the animal tracks and animal pictures on your poster board (See page 10).

If planning to exhibit this option at the fair, be sure to add the information to FairEntry once the system opens. This will be used to print your exhibit tag for display at the fair.

Second Grade

Farm Diorama

Needed Materials:

- Shoe box (Those with attached lids work very well, but not necessary.)
- Miniature Farm Animals (You can also make your own with clay or paper.)
- Any farm related items (rocks, grass, fencing) to make your farm surroundings
- Construction Paper/Computer Paper
- Markers or Water Based Paint (optional)
- Paint Brush (optional)
- Glue/Clay

Directions:

Trace the bottom of your box on a piece of paper. Trace the side of your box on a piece of paper. Cut the pieces out.

Color, paint, or draw a background for your farm on the papers. Glue the pieces to the inside of your box.

Draw or make animals for your farm.

Arrange the animals how you want them in your box. Add ponds, barns, or other items. Be creative!

If planning to exhibit this option at the fair, be sure to add the information to FairEntry once the system opens. This will be used to print your exhibit tag for display at the fair.

What Do Farm Animals Give Us?

Needed Materials:

- **What Do Farm Animals Give Us?** sheet—in this manual
- Pencil
- Pictures (drawn or printed) of items that come from farm animals
- Poster Board (see page 3)

Directions:

With an adult, discuss what types of items we have in our house and around us that come from a farm animal.

Take your **What Do Farm Animals Give Us?** sheet and walk inside your house (one room at a time). Record what items in each room come from a farm animal.

After walking through each room, think about what items you might find outside of your house that come from farm animals. Record these items on your page.

Mount the **What Do Farm Animals Give Us?** sheet to your poster (see page 10).

Add pictures of the items you have listed on your page to decorate your poster. You can draw your own pictures, or print pictures from your computer.

If planning to exhibit this option at the fair, be sure to add the information to FairEntry once the system opens. This will be used to print your exhibit tag for display at the fair.

4-H Fair Exhibit

Listed below are projects you can exhibit at the 4-H Fair judging. Check the fair book for the date and time it is due. The fair book may also list special exhibit rules. You may only exhibit 1 project from this book.

If you have any questions about your projects, please call your Mini 4-H Leader or the Extension Office.

INCLUDE completed Record Sheet with your exhibit.

First Grade

- Barn “yarn” Animals
- Animal Tracks

Second Grade

- Farm Diorama
- What Do Farm Animals Give Us?

Mounting Your Pictures

Needed Materials:

- Rubber Cement or Double Sided Tape
- Scissors
- Poster Board
- Clear Plastic

Directions:

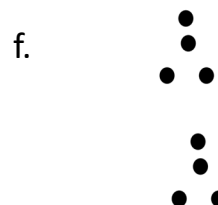
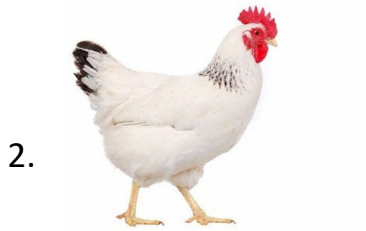
- An adult or teenager can help you cut the poster board. Cut a piece of poster board or foam board so it is 14” high by 22” wide or appropriate sized board available at the Extension Office.
- Use rubber cement or small pieces of double sided tape.
- Arrange the items neatly on your board. Be sure to include a title for your poster.
- Poster must be completely covered by a clear plastic material.

Good Luck at the 4-H Fair!

Animal Tracks

Farm animals are all different! They also have different feet. They leave tracks that are shaped like the bottom of their feet. Animals might have claws, hooves, padded feet or webbed feet.

Match the animal to their tracks. Once you've done this, draw a picture of each animal's tracks in a box provided on the next page. You will match the tracks to the animals on the farm animal pages in this manual and mount to a poster for an exhibit.



Key: 1f, 2d, 3c, 4e, 5a,

Animal Tracks

Draw a picture of each animal's tracks in a box provided on the next page. You will match the tracks to the animals on the farm animal pages in this manual and mount to a poster for

Sheep

Cow

Pig

Chicken

Rabbit

Goat



Sheep



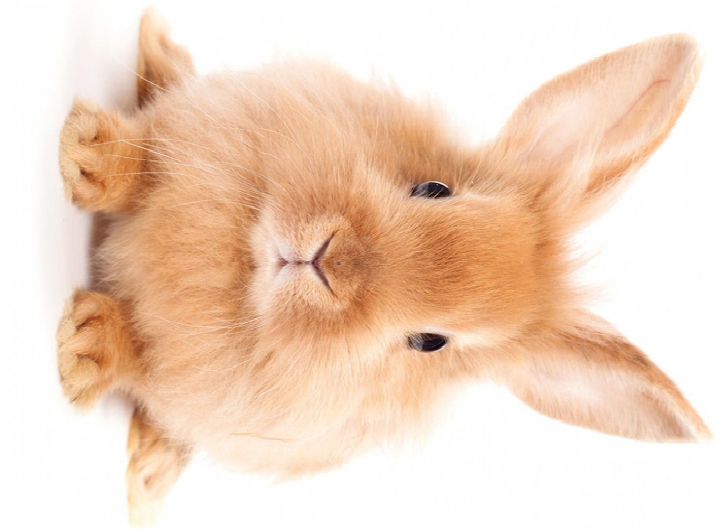
Cow



Pig



Chicken



Rabbit

Goat

What Do Farm Animals Give Us?

Take your **What Do Farm Animals Give Us?** sheet and walk inside your house (one room at a time). Record what items in each room come from a farm animal.

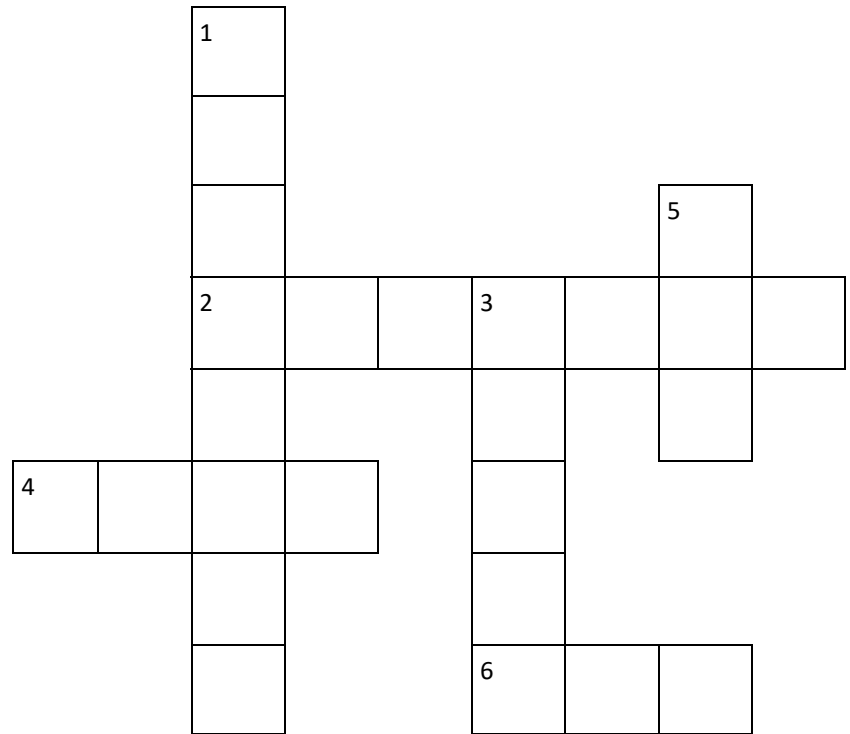
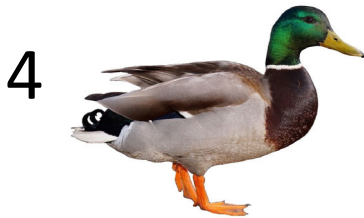
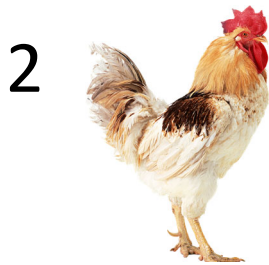
After walking through each room, think about what items you might find outside of your house that come from farm animals. Record these items on your page.

	Beef	Dairy	Goats	Rabbits	Poultry	Sheep	Swine
Example: Garage	Snow boots						Football
1.							
2.							
3.							
4.							
5.							
6.							
7.							

Farm Animals!

Word List: Hen Sheep Pig Duck Rooster Dairy Cow

Across



Down



Farm Animal Word Search

Circle the words for farm animals below.

G L P E E H S G
O T U R K E Y I
A E S R O H I P
T V E S T O W C
S R E T S O O R
N E K C I H C K



COW



PIG



HORSE



SHEEP



ROOSTER



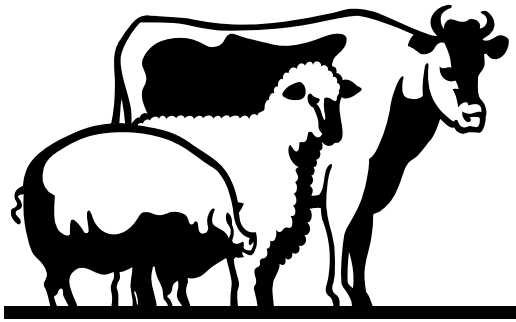
CHICKEN



TURKEY



GOAT



Mini 4-H Farm Animals Record Sheet

My favorite farm animal is

_____.

This farm animal eats

_____.

This farm animal has _____ legs.

This farm animal produces

_____.

Name:

Date:
