



AGRICULTURE & NATURAL RESOURCES

Summer Brown

Extension Educator - Agriculture and Natural Resources

What's the Buzz: Pollinator Workshop Series

If you are interested in learning about honey bees and how to care for them, there is still time to sign up for our last two workshops in the pollinator workshop series! View the attached flyer or call our office for more information.



Fruit Pruning Workshop

Save the date for our annual fruit pruning workshop at MEIGS Purdue Ag Center on February 25th from 1-4:30pm EST. Call our office or watch our Facebook page for more information.



PARP

Do you have your pesticide license and need PARP credits to keep your license? Call our office to learn about programs coming up in January and February. You can also check the "Purdue Pesticide Programs" Page for approved programs in your area.

Jasper County Invasives Initiative



Interested in learning more about invasive species in Jasper County? The Jasper County Invasives Initiative goals are to educate, engage and empower local citizens on invasive species in Jasper County. Check out our Facebook Page for more information on upcoming meetings and events.

www.facebook.com/jaspercounty.ii

Contact us at jaspercountyinvasives@gmail.com

Resources

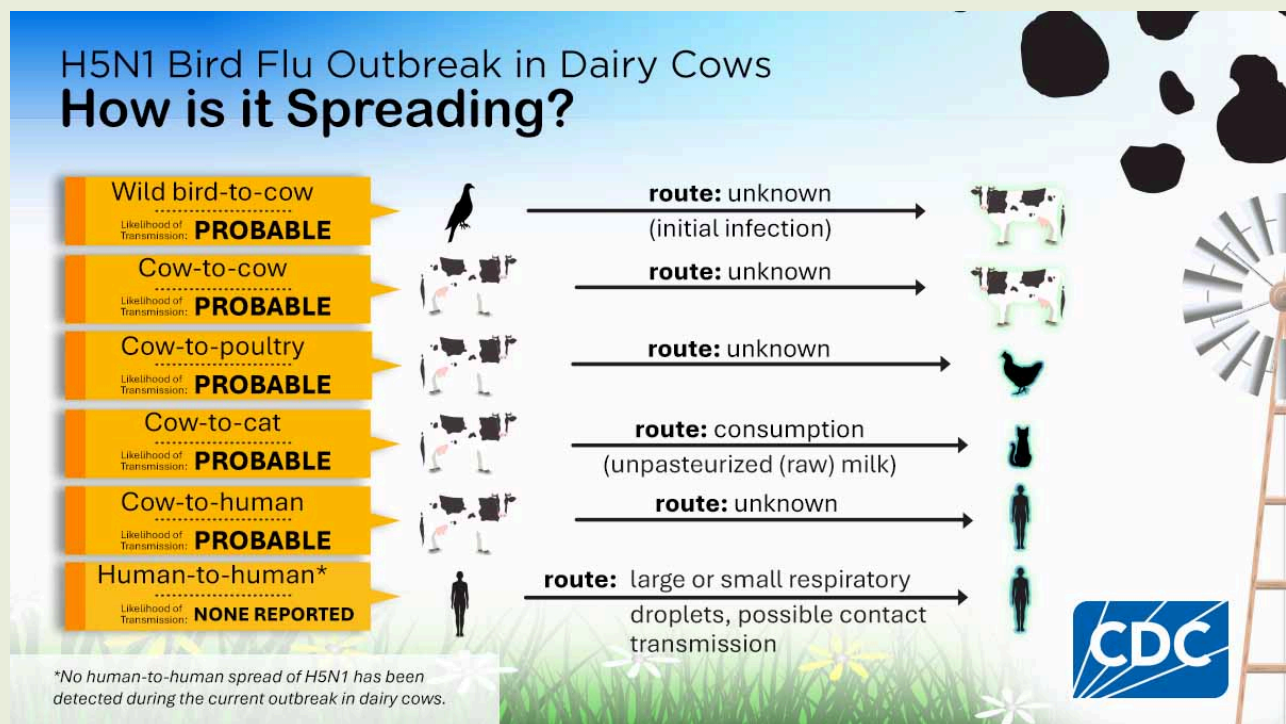


It's not too soon to start planning management for your fruit plants. Did you have issues with fungus last year? Consider planning fungicide treatments for the spring. Read this article from Purdue Extension for some help on managing pests in your fruit plantings. (Code: ID-146-W)

To view this article and many others, visit our
Purdue Extension Education Store at
<https://mdc.itap.purdue.edu/default.asp>

Avian Influenza

Have you heard about the recent cases of avian influenza in Indiana? Are you wondering how #H5N1 bird flu is spreading in dairy cows? This graphic illustrates what is currently known about how spread is happening. Find out more about the current H5N1 bird flu situation: H5 Bird Flu: Current Situation (<https://www.cdc.gov/bird-flu/situation-summary/>)



To report a case or sign up for updates, visit the Indiana State Board of Animal Health Website. <https://www.in.gov/boah/species-information/avianbirds/highly-pathogenic-avian-influenza/>