

MORGAN COUNTY MINI 4-H PROJECT HANDBOOK

4-H PLEDGE

I pledge my **HEAD** to clearer thinking,
my **HEART** to greater loyalty,
my **HANDS** to larger service,
and my **HEALTH** to better living,
for my club, my community,
my country, and my world.



REVISED 9/24

LEADERS, MEMBERS AND PARENTS

PLEASE NOTE THAT SOME OF THE MINI 4-H
EXHIBITS REQUIREMENTS HAVE BEEN
CHANGED THIS YEAR.

TAKE SPECIAL CARE WHEN READING YOUR
PROJECT DIRECTIONS.

ALSO, IF ANY OF THE HANDBOOK RULES DO
NOT AGREE WITH YOUR PROJECT MANUAL
EXHIBIT REQUIREMENTS, THE HANDBOOK
RULES ARE THE ONES YOU SHOULD FOLLOW.

IF YOU HAVE ANY QUESTIONS, CALL THE
EXTENSION OFFICE, 765-342-1010

MINI 4-H GENERAL INFORMATION

Mini 4-H is for children in Kindergarten through Second Grade. 4-H grade is determined by the student's school grade as of January 1 of the current year. Divisions are indicated as K, 1, 2. Children with disabilities that do not allow them to do regular 4-H work, are welcomed in the Mini 4-H program regardless of their grade. If a child has not completed Division K, 1, or 2 of a project he/she may do so regardless of grade, if that division fits the child's abilities better than the grade the child is in. Adults may assist Mini 4-Hers when printing is required. Computerized labels and printing may be used. The child may also be assisted if they are using the computer for their project.

In the Small Animals and Livestock projects there are pictures of animals that require that their parts be identified. If you need help and your leader isn't sure of the answer call the Extension Office (342-1010) for help. Answer keys are available to adults assisting the 4-Her.

Mini members and their families are responsible for taking their exhibits to the fair and picking them up at the end of the fair. Do not leave this responsibility up to your leader. You will receive a letter in June that will outline the times and places of Mini Exhibition and Events.

Mini Food and Garden project exhibitor's projects are donated to the Adult Leader Organization Food Auction. The proceeds are used for 4-H workshops, training, etc. If you choose not to have your exhibit auctioned off, you should attach a card for the exhibit stating "Do Not Sell". It is recommended that only disposable food containers be used in exhibits. Parents may bid at the auction for their child's project. The Fair & 4-H Association will not be responsible for containers, dishes, or utensils left at the fair.

MINI POSTER REQUIREMENTS

The size of mini posters is specified with each exhibit. Follow directions when instructions specify horizontal or vertical placement of a poster. Mini poster sizes are generally 11" x 14" or 14" x 22". **PLEASE NOTE: 22"x26" posters are NOT used** in Mini 4-H. Posters are displayed horizontally or vertically. Horizontal means the long side is on the bottom and top. Vertical means the long side is on the side. Each poster exhibit requirement in this handbook has a picture of the position in which the poster for that project should appear. The child's name, grade and club name should be placed in the lower right-hand corner of each poster. Plastic covering is NOT required for mini posters except for llama, forestry, and geology (see specific project exhibit requirements).



HORIZONTAL



VERTICAL

MINI 4-H ADDITIONAL ACTIVITIES

Mini 4-H Pet Parade Guidelines

1. **ALL** participants **MUST** be enrolled in the Morgan County Mini 4-H program.
2. **ONE** pet per mini 4-H'er. A Mini 4-H'er may **NOT** exhibit the following animals: wild animals, raccoons, ferrets, snakes, reptiles, or potbellied pigs.
3. **NO** pet over 300 lbs.
4. **NO** horses, ponies, or mules.
5. Mini 4-H'ers **MUST** fill out a "Parade Entry" form completely, and turn into the Extension Office by date listed on form. Please be sure to have proper complete health forms turned in with parade entry. Animals without proper health information will not be allowed on fairgrounds.
6. All animals **MUST** be controllable by the mini 4-H'er that has entered the animal. If a parade official feels that the mini 4-H'er **DOES NOT** have proper control of the animal before or during the parade, the animal will be withdrawn from the event. However, the mini 4-H'er will still be allowed to walk in the parade and receive any gifts the other participants receive.
7. All animals **MUST** be contained in one of the following manners:
 - a. Halter
 - b. Cage
 - c. Habitat
 - d. Bowl
 - e. Leash
8. Animals may be transported in a non-motorized vehicle, i.e. wagon, or cart.
9. Costumes and decorations for both the animal and 4-H'er are optional.
10. **NO** ribbon will be awarded – a special gift will be available for all participants.
11. This is not a project, thus no 4-H premium will be paid.
12. If you have any questions please feel free to contact the Extension Office at 765-342-1010

Animal Health Requirements For Pet Parade:

The Mini 4-H Pet Parade is held annually during the Morgan County Fair. Members will be notified by letter of time, place and registration details.

The following animals need to have a 4-H Health form or copy of health form along with entry form. Mini 4-H'er may enter an animal that will be exhibited by a regular 4-H'er during the county fair. However, a copy of the health forms **MUST** be submitted with the entry form.

- Dog – Current State 4-H Health form signed by a licensed veterinarian.
- Cat – Current State 4-H Health form signed by a licensed veterinarian
- Others – Call the State Veterinarian (317) 227-0300 or the Extension Office (765) 342-1010 for specific health requirements.

Effective 12/31/08

MINI ANIMAL CLASSES

If you are enrolled in Mini 4-H by May 15, you will receive a more detailed letter and applications at a later date regarding the following Mini Classes. Please remember, these are classes only and not projects. You will not receive any premium money for participating in these. All Mini members will receive the same color of ribbon, since these classes exist to build a member's experience with animals. If you have questions about any of these classes, call the Extension Office (765-342-1010) or the respective 4-H animal superintendent.

Goals for Mini Animal Classes:

- To promote 4-H and 4-H animal projects
- To introduce a Mini member to animal projects
- To learn the basic care of an animal
- To provide a learning experience which may increase young 4-H members' knowledge

Mini Dog Class:

The Mini Dog class is designed to increase the knowledge and excitement of K-2nd graders in 4-H and in the Morgan County Dog project. The leaders/trainers of the Mini Dog class emphasize safety, general care, and positive training methods with a dog. The Mini will be paired with a Mentor and their dog, who is a current Morgan County Canine Crusader. The Mini participant will NOT be allowed to use their own dog. All Mentors and their dogs will be approved by all Canine Crusader leaders and trainers before being assigned to a Mini participant.

The Mini Dog class is open to all divisions.

Requirements:

- 1) Each participant must be enrolled in Morgan County 4-H as a Mini.
- 2) Each Mini participant must wear close toed shoes that do NOT have a smooth sole to all workshops, trainings, or events where dogs will be present.
- 3) **It is highly recommended that mini participants attend at least 2 dog training/safety workshops.**
- 4) **It is highly recommended the mini members complete and get signed off by a Dog Mini leader/trainer on at least 4 pages from the Canine Crusaders' Mini Workbook.**

Mini Goat Class: This is an activity for **any Mini 4-H member (currently in Grades K-2 before the county fair)** interested in showing a goat at the Morgan County Fair. You may use a goat of your own. If you do not have a goat of your own, a goat will be provided for you. Mini 4-H'ers will be paired with a regular 4-H Goat member who will assist them during the show. **You are very strongly encouraged to attend at least one or more of the Goat workshops before you show a goat.**

Mini Llama Class:

All mini 4-Hers will need to be registered with 4-H by May 15th.

1. **Before participating in any Mini 4-H llama program activities all participants MUST sign a Liability Release Form. (As all llama 4-Hers do)**
2. The mini 4-Her and animal must be under parent/guardian supervision at all times.
3. No mini 4-Her with an uncontrollable or unsafe llama will be allowed to participate in workshops or in the show. This will be determined by the leader.
4. Parent will accompany mini 4-Her at all times when animal is out of the pen at show and use a double lead with the animal to and from the show ring. In the show ring the parent must remain with child, but no added lead.
5. Leaders and/or senior 4-Hers also will be in the show ring to help.
6. Proper footwear is required at all times, workshops and shows: Tennis shoes or boots. No flip flops or sandals allowed.
7. Mini 4-Hers will have 2 categories at show, Showmanship and obstacle course.
8. **4-Her must attend at least 5 workshop meetings.**

MINI ANIMAL CLASSES (CONT)

Mini Poultry Class: This is an activity for any Mini 4-H member (currently in Grades K-2 before the county fair.) The participant may bring a chicken or duck from home or borrow one from an older sibling. If bringing from home, the chicken/duck may be a cross breed and must go home after showing. Participant will be judged on their knowledge of the bird and their ability to handle the bird. All participants will receive a multi-colored ribbon. All chickens must be accompanied with an NPIP certificate showing that it is Pullorium-Typhoid clean.

Mini Rabbit Class: This is an activity for **any Mini 4-H member (currently in Grades K-2 before the county fair)**. The 4-Her must be able to handle a rabbit in order to participate in a Mini Rabbit class at the county fair. The Rabbit Show will be held at the Rabbit and Poultry Building. This class is not considered a project, but an opportunity for Mini members to experience a rabbit show. You may bring your own rabbit, or find an older 4-H Rabbit member who will allow you to use their rabbit in the Mini class. **You must make these arrangements yourself ahead of time.** Mini members may be assisted by an older member during the show.

Mini Sheep Class: This is an activity for **any Mini 4-H member (currently in Grades K-2 before the county fair)**. The adult leader in charge of this class will pair the Mini member with a regular 4-H member who will provide the lamb for this class. The Mini member is **strongly encouraged** to attend the sheep workshop. If a Mini member is unable to attend the workshop, then arrangements must be made with the adult leader in charge of this class. The sheep class will be held at the Morgan County Fair during the 4-H Sheep Show. The member will lead the lamb with a sheep halter. Special consideration will be given to the temperament and ease of handling the lamb. Quality of the animal will not be judged. The lamb should be calm and lead quietly.

Mini Small Animals:

1. This project is for any Mini 4-H member (currently in Grades K-2 before the county fair).
2. A Mini member is allowed to show ONE of the following: bird, gerbil, grade rabbit, guinea pig, hamster, mouse or rat.
3. All Small Animals must remain in their cage at all times.
4. The member will bring the cage to the judging table.
5. All Mini Members will receive the same placing and the same color of ribbon.
6. All Mini Members are strongly encouraged to attend the Small Animal Workshop. Date will be announced in a letter sent to Mini 4-H Members enrolled by May 15. At this workshop a Mini Member who does not own a Small Animal may be paired with a regular 4-H member.
7. The Morgan County Livestock Committee will have the final determination of any problem or question.

Mini Swine Class: This activity is open to **enrolled Mini 4-H Second Graders only (currently in 2nd grade before the county fair)** interested in showing a pig at the Morgan County Fair. **It is strongly suggested that Mini members attend the Swine Showmanship Workshop that will be held.** The Mini Member will use another 4-H member's pig, so **do not bring a pig to the fair.** Mini 4-H members will be paired with an older member who will assist them during the show.

Effective 12/31/16

AEROSPACE (ROCKETRY)

DIVISION – KINDERGARTEN, 1ST GRADE & 2ND GRADE

EXHIBIT:

Do an activity in the manual and exhibit that activity. You must do a different activity each year you are in the project. Choose one each year:

- A. Rocket, bird and airplane (pictures) booklet from pages 7 and 8 in manual.
- B. Poster 11" x14" matching people with jobs from page 10 in project manual.
- C. Space helmet you made
- D. Paper airplane you made

HORIZONTAL

11"x14"



EFFECTIVE 12/31/09

ALL ABOUT ME

DIVISION: KINDERGARTEN, 1ST GRADE & 2ND GRADE

EXHIBIT – ALL DIVISIONS

Decorated notebook (created the first year you exhibit in the project and used every year with activities completed each year)

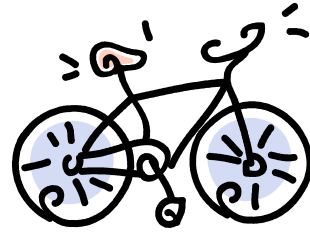
ACTIVITIES (choose at least one new activity each year)

1. All About Me from project booklet.
2. Family Tree from project booklet. (Women should be listed using their maiden name).
3. Photo album page(s) with identified pictures of yourself, brothers, sisters, parents. Put name of person and date taken with picture.
4. A story about a relative's childhood.
5. Ask a relative about a favorite pet. Write the story.
6. Ask a relative where they lived while growing up. Write the story.
7. Interview a relative. Record the interview on a cell phone, video, or computer. Write a story including the name of the person interviewed, how they are related to you and two (2) things you learned about the relative from the interview. You may include a picture of the person taken during the interview with your story.



Effective 12/31/22

MINI BICYCLE



DIVISION: ALL EXHIBITS:

A 14" x 22" poster displayed horizontally about something you learned in the manual. Examples are parts of the bicycle, traffic signs you should know, bicycle safety, hand signals, the importance of wearing a helmet, what to look for to make sure the bicycle fits you. Use your imagination to let others know what you have learned and display it on the poster. You may draw and color the items on the poster, or use cut outs from magazines, coloring books, etc.

HORIZONTAL

14" X 22"

MINI BICYCLE RODEO

DIVISION: ALL EXHIBIT:

Participate in the bicycle Rodeo at the county Fair.

REQUIREMENTS:

In order to participate in the bicycle rodeo, certain requirements must be met. They are:

1. Attend and complete two bicycle safety workshops.
2. Bring your own bicycle to the rodeo; two members **cannot** share the same bicycle at the rodeo.
3. You **must** wear a bike helmet while participating in the rodeo. Bring your own helmet or borrow one provided at the rodeo.
4. Your bicycle must pass the safety inspection given before the rodeo.
5. Participate in 5 activities at the rodeo.
6. Review your bicycle manual before the rodeo so that you know all the safety rules. You **will not** be required to take the written exam that the regular 4-Hers take.

Effective 12/31/08



Mini 4-H Cake/Cookie Decorating

Decorating cakes or cookies for a party is fun. Simple decorations may be made by icing the cake or cookie and then placing small candies or flavored chips on the icing to make a design. Fancy designs may be made by using cake decorating tools. In mini 4-H, you will learn to make lines, dots, and stars for decorating cookies and cup cakes. These skills may be built upon later in the regular 4-H cake decorating project.

Buy large cookies that are not sugar coated or work with an adult to make simple sugar cookies without sugar coating or cupcakes to decorate. Experiment with several different kinds of candies, marshmallows, purchased candy decorations or baking chips to make designs on the cookies or cupcakes.

The icing may be a simple butter cream icing or purchased frosting in a can. Apply the icing using a spatula on the top of the cookie or cupcake then apply the decorations.

Prepackaged cookie and cake decorating supplies can be found in the local groceries. These may be in aerosol cans and have the tips needed for making designs included with them. Packages will include directions for which tips to use and what designs may be made. If you have a family member who decorates cakes they may have the tools you will need. Wilton Products, Inc. has excellent resources for decorating cookies and cakes.

Butter Cream Icing:

2 Tablespoons softened butter, a dash of salt, 1 cup powdered confectioner's sugar, 1 Tablespoon milk, ½ teaspoon vanilla. Combine butter, salt, and 1/3 sugar until creamy, alternately add the rest of the sugar and milk until the mixture is smooth. Add the vanilla and thoroughly stir. If the icing is too thin, add additional confectioner's sugar until the consistency is what you want. If the icing is too thick, thin it with a little milk. The recipe should cover about ½ dozen cupcakes left in the cupcake liners.

Exhibit Requirements (K-2):

- | | |
|--------------|--|
| Kindergarten | – Three (3) iced/frosted cookies decorated with candy, marshmallows, and/or baking chips |
| 1st Grade | – Three (3) iced/frosted cookies decorated with lines and/or dots and candy, marshmallows, and/or baking chips |
| 2nd Grade | – Three (3) cupcakes iced/frosted and decorated with lines, dots, and/or stars and marshmallows, and/or baking chips |

Effective 12/31/08

Mini 4-H Cookie/Cupcake Record Sheet

Name _____ Division K 1 2

How many cookies did you decorate? _____ Cupcakes? _____

What new decorating technique did you learn this year? _____

MINI COLLECTIONS

DIVISION: ALL

EXHIBIT: CHOOSE ONE



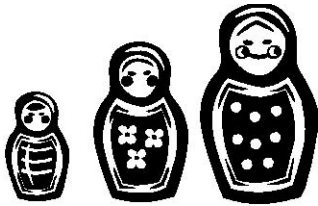
1. Five (5) items or five (5) pairs of items from your collection with a copy of “My Record” (available from the Extension Office) with the “My Collection” information filled out. If the same collection is used more than one year in the project additional or different items must be used for the exhibit. Use a copy of the same “My Record” with the new items added to it.

PLEASE NOTE: Your collection is not left at the fair for exhibit. Please take a photo of your collection at home and bring it to the judging along with your 5 items and “My Collection Record”. After the judging, you will leave your photo for display during the county fair.

2. A short report of your visit to the museum in a folder. Put your name, project, age, and club on a label on the lower right-hand corner of the front of the folder. The report should include the name of the museum you visited, when you visited the museum and something about museums--such as why do they collect stuff, where do they get things they collect, what is the best thing they collect, or what is the most unusual thing they collect?



3. A chart of a survey of family or friends about their collections. The chart should be no larger than 14" x 22", displayed *horizontally*, and should contain three columns:
Name (of persons surveyed), Date (survey was done), Collection (list of items they collect). A minimum of five people should be surveyed and listed on the chart.



HORIZONTAL

14" X 22"

Effective 12/31/08

MINI CRAFTS

All Divisions: A maximum of seven (7) crafts may be exhibited each year from the following:
Attach an exhibit tag to the front of your exhibit.

MINI EMBROIDERY

EXHIBIT: 1. One of the samplers as described in the manual. Edges of the sampler may be machine finished (finish will not be judged; therefore, an adult may help with finishing the edges). Display the sampler flat, in a clear plastic bag.

OR 2. An embroidered item made from a kit or an original design.

MINI MODELS

EXHIBIT: A model constructed by the member according to his/her abilities. *Examples:* Lego snap together model, model made from a kit, log cabin made from sticks and mud, anything that is a replica of something larger.

MINI OTHER CRAFT

EXHIBIT: Any craft not covered by one of the listed crafts. Kits may be used. Giftwrapping is not a specific Mini project, but may be exhibited in the Other Craft category.

MINI PAINTING

EXHIBIT: All paintings must have a wire hanger firmly attached to the picture frame.

1. A paint-by-number picture, framed and ready to hang.

OR

2. A framed, ready to hang freehand painting using one of the following mediums: oil, water color, ink, charcoal, fingerpaint.

Paintings must be framed and ready to hang (must have wire hanger). Homemade frames may be used.

MINI SKETCHING

EXHIBIT: All sketches must have a wire hanger firmly attached to the picture frame.

A framed, ready-to-hang sketch. Sketches may be colored using one of the following mediums: charcoal, colored pencils, crayon, ink, or chalk.

Sketches must be framed and ready to hang (must have wire hanger). Homemade frames may be used.

TEXTILE DESIGN

EXHIBIT: An item which has been tie dyed, screen printed, stamped with a design the member has made, or any article which the member has made using different textures to form a design.

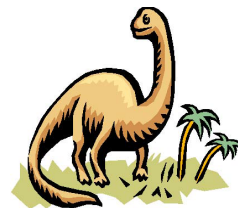
RECYCLING: (this is part of the craft project; each of the following exhibits can be exhibited under “Mini Craft” and will be counted as a craft)

EXHIBIT: All Posters should be 11” x 14” displayed vertically.

1. Collect newspapers and deliver them to a recycling bin. Make a poster with two pictures showing you collecting and delivering the papers.
2. Help clean up a roadside. Make a poster with pictures or drawings showing what you did.
3. Make a poster with pictures of items that can be recycled.
4. Make something out of recycled items. (Item can be no larger than 1’x1’x1’)
5. Make a book about your recycling activities. Pictures may be photographs or drawn.

Effective 12/31/19

DINOSAURS



What to Exhibit

Here is a list of projects that can be shown at the 4-H Fair. Pick **one** of the projects you would like to exhibit at the fair. You do not need to make the projects in a special order. If you have any questions about your projects, please call the Extension Office. There are people there who can help you. (765-342-1010)

- Make a fossil cast. Use something that will make a fossil that might have been around 200 million years ago.
(Example: bones, leaves, and twigs)
- Find four (4) pictures of dinosaurs. Answer these questions for each picture. You can use the dinosaurs in this book. Put the pictures and information in a self-made notebook.
 - Name of dinosaur
 - Size of dinosaur
 - Weight of dinosaur
 - Type of dinosaur
- Make a 14"x22" poster displayed horizontally that shows how big dinosaurs were. Draw pictures of yourself, your house, your school, and your favorite dinosaur. Answer these questions for each item drawn:
 - Name of item/person/dinosaur
 - Size of item/person/dinosaur
- Make a model of your favorite dinosaur. You can use model materials of your choice.
- Make a dino-time Dinorama. Should not exceed 12"x12"x16".
 - Find a large shoebox.
 - Paint the inside of the box to look like the Earth when dinosaurs were alive.
 - Put soil in the bottom of the box. Put enough in to make hills and swamps. You can use poster board painted blue for water.
 - Collect rocks for your dinorama.
 - Collect small twigs, leaves, and other plants.
 - Make models of dinosaurs and put them in your box. You can use poster board to add stiffness. Clay works, too!
- Make a model of your favorite dinosaur. Put your model on a flat surface and add other items to make it look like it is standing in a swamp.
- Collect five types of plants that dinosaurs would be able to eat if they lived today. (Hint: the plants that dinosaurs ate did not have flowers.) Put the plants in a self-made notebook. Answer the following questions next to each plant.
 - Name of plant
 - Why a dinosaur would eat it
 - Where you found the plant

Effective 12/31/22

DO YOUR OWN THING

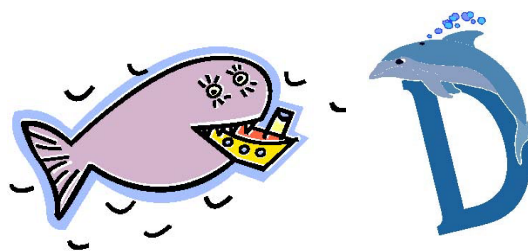
DIVISION/GRADE – ALL

The exhibit will be something that doesn't fit in any other existing project category.

Examples are items such as short stories, creative writing, puzzles, 3-Dimensional puzzles, games, vocal recordings, instrumental recordings, pine derby cars, etc.

Effective 12/31/19

MINI WHALES & DOLPHINS



DIVISION - KINDERGARTEN EXHIBIT: CHOOSE ONE

1. Make a model of your favorite dolphin. Use a kit, clay, paper mache', or material of your own choice.
2. Color the pictures in *Activity 5 - My Favorite Dolphin* and put them on a 14" x 22" poster displayed *horizontally*. Put the name of each dolphin below it. Xerox the dolphin pictures in your manual to use on the poster.

DIVISION - 1ST GRADE EXHIBIT: CHOOSE ONE

1. Make a model of a whale. Use a kit, clay, paper mache' or material of your choice.
2. A poster using *Activity 4 - My Favorite Whale*. Xerox and use three (3) of the whales from *Activity 4*. Color them, cut them out and put them on a 14" x 22" poster displayed *horizontally*. Put the name of each whale below it.
3. Find four pictures of whales. You may use whales from Activity 4. Color them, cut them out. Put the pictures in a self-made notebook with the name of each whale, its size and weight and type.

DIVISION - 2ND GRADE EXHIBIT: CHOOSE ONE

1. A 11" x 14" poster identifying the parts of a whale. Pick one of the whales in your manual, Xerox it, cut it out and put it on the poster and identify the five (5) parts of a whale: blowhole, dorsal fin, flippers, fluke, eyes. Display the poster *horizontally*. Look at *Activity 3* in the manual for help.

HORIZONTAL 11" x 14"

2. A mobile made of three whales or three dolphins. You may Xerox pages from your manual, color the whales or dolphins, construct and make a mobile, or make (3) whales or dolphins of a material of your choice and construct a mobile.
3. Make a 14"x22" poster that shows how big whales are. Draw pictures of yourself, your house, your school and your favorite whale. Tell what kind of whale it is and how big it gets.
4. Make a whalerama in a shoe box.

Effective 12/31/09

MINI ENTOMOLOGY

DIVISION - KINDERGARTEN

EXHIBIT:

The bee picture from the manual, colored and mounted on an 11" x 14" poster displayed VERTICALLY.



DIVISION - 1ST GRADE

EXHIBIT:

The butterfly picture from the manual colored like a Monarch, Viceroy, Red Admiral, Cabbage, Wood Nymph, or Orange Sulphur butterfly. Identify the parts of the butterfly and mount the picture on an 11" x 14" poster displayed HORIZONTALLY.

DIVISION - 2ND GRADE

EXHIBIT:

The grasshopper picture from the manual mounted on an 11" x 14" poster displayed HORIZONTALLY. Label the grasshopper parts and color the grasshopper. Fill in the information below the grasshopper.

VERTICAL

K

HORIZONTAL

Div. 1st & 2nd

Effective 12/31/09

MINI FARM ANIMALS

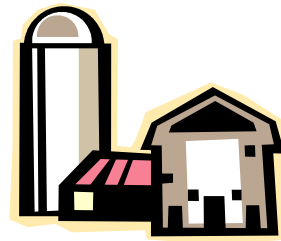


EXHIBIT: CHOOSE ONE

1. Make a 14" x 22" poster showing different kinds of farm animals. You can use the pictures from Activity 1 in your manual. Draw your own animals or cut them out of magazines. Display the poster **HORIZONTALLY**.
2. Make your own farm. Use the picture of the barn in your manual. Draw animals that you would raise. Add grass, tractors, people. Use your imagination and make the farm you would like to have. Put your farm on a 14"x 22" poster. Display the poster **HORIZONTALLY**.
3. Make a model of your favorite farm animal. You may use clay, paper mache', popsicle sticks, a purchased model kit, etc.. Put the farm animal in his own farm. Use a shoebox for your farm; add to the farm using things from around the house, adding more animals.
4. A poster showing different things that farm animals make for us. Include at least 8 different things such as hamburger, wool, eggs, milk. You can use the chart in your manual if you wish. Display the items on a 14" x 22" poster displayed **HORIZONTALLY**.
5. Write a story about your favorite farm animal. The story must have at least three sentences. Make a book of your story. You might want to include pictures. Put the name of your story and your name on the cover of the book.

HORIZONTAL
14" X 22"

6. Write a story about the farmer to whom you talked. The story must have four (4) sentences. Include pictures in your story and put your name on the cover of the book.
7. Make a fairy tale book by retelling your favorite fairytale using farm animals. Put pictures in your book and put the title of the book and your name on the cover of the book.

MINI FLOWERS

EXHIBITS - Choose One-All Levels

Choose a project from the list below to exhibit at the county fair. You should choose a different project each year.

- One zinnia or one marigold bloom OR 1 houseplant cared for 2 or 3 months.
- A container with two different house plants for which you have cared. Label attached that tells type of plants.
- Two different flower blooms from flowers you have grown from seed. (Example: zinnia, marigold)
It is recommended that valuable vases/containers NOT be brought to the fair for exhibit. You should use plastic or disposable containers for displaying your cut flowers.
- A flowering plant in a pot that you have cared for. Attach a label that tells the kind of flowering plant.
- A notebook of at least 3 pictures of flowers. Write the name of each flower next to it. You can cut out pictures of the flowers or draw them.
- A cacti with a label attached that tells the type of cactus. You must have cared for the cactus for 2 or 3 months.
- Activity 1 – Sun, Water and Air Chart displayed **VERTICALLY** on an 11”x14 poster that shows your information.
- Activity 2 – Parts of a Plant – Draw arrows to the parts of the plant, color the picture. Display **VERTICALLY** on an 11”x14” poster.

EFFECTIVE 12/31/19

MINI FOODS

There are **two** Mini manuals. The manual containing *Foods Activities* is to be used to complete activities and as a supplement to the Mini manuals produced by Morgan County. The exhibits come out the Morgan County manuals.

DIVISION - KINDERGARTEN

EXHIBIT: A 14" x 22" poster about measuring ingredients. Include measuring cups/spoons for measuring dry ingredients and measuring cups/spoons for measuring liquids. Include dry ingredients and liquids. Pictures may be cut from magazines or drawn. Consult your manuals for information. Display the poster *horizontally*.

OR

Measure liquids or dry ingredients for the judge. Measuring utensils and liquid or dry ingredients will be provided at the judging.

HORIZONTAL
14" X 22"

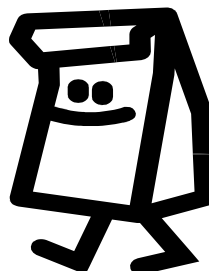
DIVISION - 1ST GRADE

EXHIBIT: Six (6) no-bake cookies and a copy of the recipe. You may use any recipe of your choosing. Bring the cookies to the fair on a paper plate or in a plastic bag. (Include a copy of your recipe) Your cookies will be sold in the 4-H Food Auction unless a note is attached to the exhibit stating

"Do Not Sell".

DIVISION - 2ND GRADE

EXHIBIT: A packed sack lunch with a menu attached to the outside of the sack. Don't use a lunch box or thermos. (A paper cup may represent the thermos). Pack a real lunch but after the project is judged, take the "real" food with you. Leave your sack, menu, and paper cup for exhibit. You may decorate your sack if you wish. Make sure your name, grade, and 4-H Club name is on the sack.



Effective 12/31/08

MINI FORESTRY

ALL POSTER EXHIBITS IN MINI FORESTRY ARE 14" X 22" DISPLAYED *HORIZONTALLY*.

HORIZONTAL
14" X 22"

DIVISION - KINDERGARTEN

EXHIBIT: 1. Draw and color a tree showing all its parts: roots, trunk, branches and leaves.
You may draw birds and animals in the picture.

OR

2. A poster about the uses of wood. The poster should contain 5 to 7 pictures of things made from wood. Pictures may be cut from a magazine, taken with a camera, or hand drawn.

OR

3. A forestry collage made with items you found while walking in the woods: leaves, twigs, grasses, flowers, feathers, weeds. Rocks, fossils, pine cones, etc.
You *must* cover this poster with plastic.

DIVISION - 1ST GRADE

EXHIBIT: 1. A poster with 5 to 7 pictures of animals and/or birds that make their homes in trees. Pictures may be cut from magazines, taken with a camera, or drawn.

OR

2. Your leaf book of 5 to 7 leaves, each on a separate 8 ½ x 11 piece of paper. Put a title and your name on the cover of the book. Notebooks may be homemade.

OR

3. A notebook of 5 to 7 bark and leaf rubbings with a title and your name on the front of the book. Notebooks may be homemade.

DIVISION - 2ND GRADE

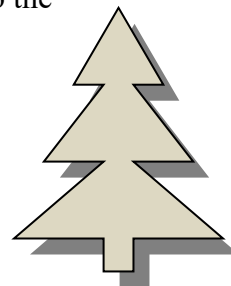
EXHIBIT: 1. A poster of 5 to 7 pictures of different types of trees or a picture you have drawn of your house, yard, and trees showing the types of trees in your yard.

OR

2. A book (may be homemade) of 5 to 7 things you saw, smelled, heard or touched during your walk in the woods, park or neighborhood. The book should be 5 to 7 pages with the items glued or taped to each page. Put your name and *Senses* title on the front of the book.

OR

3. A poster displaying 5 to 7 colored leaves you collected. Glue the leaves to the poster. *Cover the poster with plastic.*



MINI GARDENING

DIVISIONS - ALL

EXHIBIT: CHOOSE ONE OF THE FOLLOWING:

1. A garden plant in a pot no larger than 10" in diameter that you have cared for at least 2 months. Label the pot with your name, club, and the name of the plant. A chia pet you have grown can be substituted for the potted plant.
2. A plate of vegetables. For large vegetables such as pumpkin, squash eggplant, broccoli, cauliflower exhibit one item. For medium sized vegetables such as tomatoes, green peppers, banana peppers, carrots, cucumbers, onions exhibit five (5). For small vegetables such as green beans, snap peas, lima beans, exhibit 20. When more than one vegetable is needed to make the exhibit, each vegetable should be as much like the other vegetables in size and shape as possible. All vegetables will be sold in the 4-H Food Auction unless a note is attached stating "Do Not Sell".
3. A scrapbook (may be homemade) of at least seven (7) different vegetables. Label each vegetable with its name and put your name on the cover of the scrapbook. Title your scrapbook "*Mini Gardening*".
- 4 A plant in a disposable container of colored water that you used to do in the Activity: "See Plants Drink".

Example: celery, carnation, Queen Anne's lace, etc.

5. A plate with three (3) different vegetables. All vegetables will be sold in the 4-H Food Auction unless a note is attached stating "Do Not Sell".



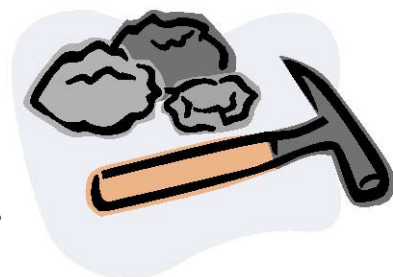
Effective 12/31/16

MINI GEOLOGY

DIVISION – KINDERGARTEN

EXHIBIT: CHOOSE ONE

1. A 11" x 14" poster displayed **HORIZONTALLY** with two pictures of the rock garden you made. Below the pictures write/print three (3) sentences that describe how you made your garden and what rocks you used.
2. A decorated egg carton containing the 12 rocks you collected. Label the rocks from 1 to 12 and include a numbered list that tells something about each rock. You must have one pretty rock, one rock of unusual shape, 3 rocks that are different colors. The other 7 rocks are your choice.



DIVISION - 1st GRADE

EXHIBIT:

Two of the following sedimentary rocks: sand, gravel, limestone, sandstone, shale or coal on a 11" x 14" poster displayed **HORIZONTALLY**. Put the identification labels from your manual below each rock. You may cover your exhibit with plastic but the judge may need to remove it to identify the rocks. If the poster needs reinforced use a cardboard or Styrofoam backing; do not use wood.

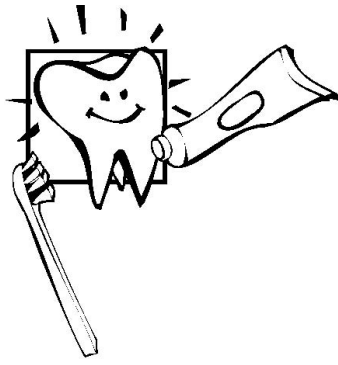
DIVISION - 2nd GRADE

EXHIBIT:

Two rocks containing minerals on a 11" x 14" poster displayed **HORIZONTALLY**. Use the labels in your manual to identify the minerals. It is best to use rocks which contain a large amount of one mineral rather than rocks which contain a long list of several minerals. Back the poster with cardboard if reinforcement is needed. You may cover the poster with plastic, but the judge may need to remove it to identify the rocks.

HORIZONTAL
11" X 14"

Effective 12/31/08



MINI HEALTH

ALL MINI HEALTH POSTERS ARE 11" X 14" DISPLAYED VERTICALLY.

DIVISION - KINDERGARTEN

EXHIBIT:

A poster on dental care. Pictures may be cut from magazines or drawn. Use your imagination. Poster should be displayed **HORIZONTALLY**.

DIVISION - 1ST GRADE

EXHIBIT:

Complete "My Food Plate" from your manual and mount it **VERTICALLY** on a 11 x 14 poster.

DIVISION - 2ND GRADE

EXHIBIT:

Exhibit the human chart on an 11" x 14" poster board displayed **VERTICALLY** and cover with plastic. Do NOT mount your poster on hardboard or wood. Match the vitamins, protein, or fats with the parts of the body they help. Hint: If you worked the crossword puzzle you have the answers for the poster. Go back and use the puzzle and its questions to fill in the poster. You may color the poster if you wish, but use different colors for each part of the body. For example, use red for the muscles, brown for the bones, pink for the digestive tract, etc.

CAUTION: When you are filling in the blanks on your exhibit poster one part of the body is used two times and one of the vitamins has two answers, you must list both answers.

VERTICAL

11"X14"

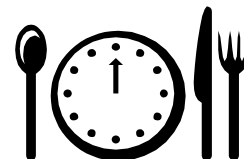
1st & 2nd Grade

MINI HOME FURNISHINGS

DIVISION - KINDERGARTEN

EXHIBIT:

Color, cut out, and arrange the place setting from your manual on a 14" x 22" poster. You may also use a paper/plastic plate and paper napkin with plastic utensils and a picture of a glass to arrange a place setting on your 14" x 22" poster. Display the poster *horizontally*.



HORIZONTAL

14" X 22"

DIVISION – 1st GRADE

EXHIBIT:

The bedroom nameplate designed by the member. Use your imagination. You could paint your name on a board, stitch in fabric, write your name in glue on poster board and sprinkle glitter over it, cut out block letters and string them together to make your name, glue macaroni in the shape of your name on paper and paint it or finger paint your name on fabric.

DIVISION – 2nd GRADE

EXHIBIT:

A pencil box or holder you have made according to the example in your manual or one of your own design.

Effective 12/31/09

MINI HORSELESS HORSEMAN

REQUIREMENT: Chose one of the following to exhibit. Choose a different one to exhibit each year. Label is to be attached to the lower right hand corner of your exhibit.

EXHIBIT:

1. Color and mount the horse and foal picture from your manual on a 11" x 14" poster. Display the poster **vertically**.
2. Make a book with pictures of horses that you have drawn and colored or cut from magazines. The book must have at least 3 pages. Title the book "Mini Horseless Horseman".
3. Color the horse picture from your manual giving it face and leg markings. Mount the picture on an 11" x 14" poster. Display the poster **vertically**.
4. Color and mount the numbered horse and the parts page from your manual side by side on a 14" x 22" poster. Display the poster **HORIZONTALLY**.
5. Cut out or draw a picture of a horse and write a story you made up about the horse. The story must be a least 3 sentences long. You may have your parent write the story as you tell it. Attach the picture and story to a 14" x 22" poster. Display the poster **HORIZONTALLY**

NAME _____

PROJECT _____

GRADE _____

CLUB _____

HORIZONTAL
14"x22" – 2nd Grade

VERTICAL
Kindergarten
1st Grade

11"x14"

MINI 4-H HORSE AND PONY GUIDELINES

GOALS:

1. Promote and encourage safety.
2. Provide a fun learning experience that may increase enrollment in regular horse and pony 4-H.
3. Help mini 4-Her's learn the rules of horse showing.
4. Provide knowledge of a horse and pony project, which is very complex because an animal may be shown for several years and there are a variety of different classes to show in.
5. Rewarding experience for the mini and their parent or guardian.

INFORMATION:

1. This is a county only project.
2. Special attention must be given in selecting a horse or pony for this project. Remember we are promoting safety; the quality of the animal will not be judged.
3. The child must be enrolled in mini 4-H.
4. Those in Mini Horse & Pony should have their general member enrollment form in to the Extension Office by **April 15th**.
5. Classes offered include a safety showmanship with a parent and a lead line class with a parent.
6. A special time will be set aside for the mini show. During the time of mini 4-H show and preparation, no regular 4-H members may lead or ride their animal anywhere on the fairgrounds.
7. Advanced 4-H showman and 4-H leaders may be in the show ring during the mini show to assure safety of the participants.
8. Awards will be given for participation in the mini 4-H horse and pony project.

RULES:

1. ASTM approved safety helmets with harness in place and fastened must be worn at all workshops and the mini show. This includes the showmanship and lead line classes.
2. The mini 4-Her and animal **must be under parent/guardian supervision at all times.**
3. **Before participating in any Mini 4-H Horse & Pony program activities all participants MUST sign a Liability Release Form.**
4. No mini 4-Her with an uncontrollable or unsafe horse or pony will be allowed to participate in the workshops or in the show. Uncontrollable or unsafe animals can be determined by the Horse and Pony Committee or the mini 4-H judge.
5. The same combination of parent, mini and the animal that will show at the fair should attend and participate in 2 (two) Mini safety workshops. It is **strongly recommended** that you attend at least 2 workshops. Additional mini workshops may be attended. *** See Below**
6. Proper footwear of western boots with a heel, hunt or jodhpur boots must be worn at all workshops and the show. All members must wear long pants. No shorts will be allowed. Also members must wear short or long-sleeved shirts. There will be no tank tops, halter-tops, or bathing suits tops allowed.
7. Only Mini 4-Her's will be in the make-up arena or the show ring at a given time.
8. No Mini 4-Her may lead an animal unless the parent/guardian also has a lead rope on the animal.
9. The Mini 4-Her is only allowed to mount in the make-up arena. The parent/guardian must lead the animal in the make-up arena before the Mini 4-Her may mount.
10. For the lead line class the Mini 4-Her must have a proper fitting saddle with stirrups of proper lengths. **ADD ON STIRRUPS ARE NOT ALLOWED. MINI MEMBER MAY NOT PARTICIPATE IN A WORKSHOP OR BE ALLOWED TO SHOW WITH THEM.**

*** It is extremely important to attend these workshops. The member and animal will become familiar with the arena and receive instructions from the clinicians. Effective 12/31/09**

MINI LLAMA

DIVISION – KINDERGARTEN EXHIBIT:

Cut out llama picture and color it. Mount on 11” x 14” poster board displayed HORIZONTALLY. Cover with plastic and place on stiff backing.

DIVISION – 1ST GRADE EXHIBIT:

Draw or cut out llama picture and color it. Add cutouts of things llamas need. For example: barn, hay and water. Mount on 14” x 22” poster board displayed horizontally. Cover with plastic and place on stiff backing.

DIVISION – 2ND GRADE EXHIBIT:

Make a shoebox scene using llama cutouts provided in manual. Paste on cardboard to make stand-up figures. Decorate shoebox and mount figures in box.

NOTE: BE SURE TO READ AND COMPLETE THE DIVISION REQUIREMENTS LISTED IN THE MANUAL FOR YOUR GRADE.

HORIZONTAL

11”X14” – Kindergarten

14”x22” – 1st Grade

Effective 12/31/08

MINI LIVESTOCK

DIVISION - KINDERGARTEN

EXHIBIT:

Cut out or draw a picture of a sheep, cow or pig and display it on 11" x 14" poster with pictures of two things that we use that come from the animal. Display the poster **HORIZONTALLY**.

DIVISION - 1ST GRADE

EXHIBIT:

Complete one of the charts (cow, pig or sheep) in the manual identifying the parts of the animal. Display the chart on an 11" x 14" poster displayed **VERTICALLY**.

DIVISION - 2ND GRADE

EXHIBIT:

Complete the two charts you did not do in Division - 1st Grade in your manual, identifying the parts of the animals, and mount them on a 14" x 22" poster displayed **HORIZONTALLY**. Color the animals and below each one list the breed of the animal and three (3) characteristics of that breed.

VERTICAL

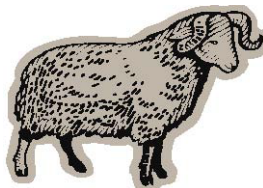
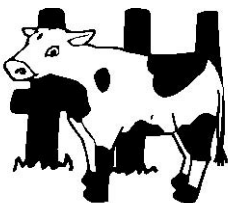
11"x14"

Kindergarten and
1st Grade

HORIZONTAL

14" X 22"

2nd Grade





MINI MY PET & ME

DIVISIONS - ALL

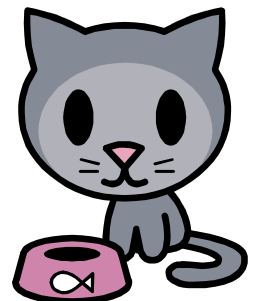
EXHIBIT: CHOOSE ONE

1. A scrapbook, homemade or purchased, 4 pages minimum about a pet you have or a pet you would like to have. Include photographs or cut out pictures of the pet and tell why you like the pet. Put the title "My Pet & Me" on the cover along with your name, grade and club name.
2. An 11" x 14" poster displayed HORIZONTALLY of pictures of you and your pet or of a pet you would like to have. Drawings, cut outs or photographs may be used. Put your name, grade, and club name in the lower right hand corner of the poster and the title "My Pet & Me" across the top of the poster.

HORIZONTAL

11" X 14"

Effective 12/31/08



MINI 4-H PHOTOGRAPHY



Capturing memories in photographs is a pastime many people enjoy. Do you like to take pictures? It is fun to experiment taking different kinds of pictures. Do you like taking pictures of animals, people, or scenery? Did you take a camera with you on your last vacation or visit to the zoo? In Mini 4-H, you will have the opportunity to share the best pictures you have taken.

Cameras often come with suggestions on how to take a good picture. You can consult books at the library or the regular 4-H Photography manual for help in improving your picture taking skills. Take at least twenty-four (24) pictures.

EXHIBIT REQUIREMENTS

All posters are to be displayed horizontally

HORIZONTAL

14" X 22"

All Divisions:

- Pictures are to be no smaller than 3 ½ x 5" and no larger than 4" x 6".
- Pictures must be taken by the Mini 4-H within the last year.
- Pictures should be mounted on the poster with rubber cement.
- Poster may be covered with plastic and backed with cardboard or Styrofoam.
- Place a label with your name, 4-H Club, and Division in the lower right hand corner of the poster.

Kindergarten – Exhibit 3 color pictures you have taken on a 14" x 22" poster. Number each picture and place a title at the top of your poster. The title may be of your choosing.

1st Grade – Exhibit 3 color pictures (one of an animal, one of a person, and one of scenery) you have taken on a 14" x 22" poster. Number each picture and place a title at the top of your poster. The title may be of your choosing.

2nd Grade – Exhibit 3 or 4 color pictures that tell a story about one topic on a 14" x 22" poster. Number and label each picture according to what it tells about your topic. Place a title at the top of your poster that tells the topic you have chosen.

Effective 12/31/09

SEWING

DIVISION - KINDERGARTEN

EXHIBIT: CHOOSE ONE

1. A Sewing Kit with at least scissors, pins, small ruler, needles, tape measure, pin cushion, and thread. You may add other items such as a thimble, tailor's chalk, needle threader, etc. The kit should be displayed in a shoe box or container you made to hold your sewing kit.
2. A 14" x 22" poster showing the items needed for a sewing kit displayed **HORIZONTALLY**. You may draw and color or cut the items out of a magazine.
3. A free style, hand sewn item. A design of your choice sewn on burlap, a dish cloth or other loosely woven fabric. Use different kinds of stitches and different lengths of stitches in different colors to show that you have learned to sew with a needle.

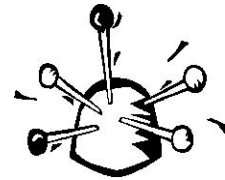
HORIZONTAL

14" x 22"

DIVISON - 1ST GRADE

EXHIBIT: CHOOSE ONE

1. A pin cushion you have made. It may be the one in your manual or a design of your choice.
Make sure pins will stick easily into the pin cushion.
2. Honey Bear or Cool Cat. See instructions in your manual. The project may be left unstuffed with an opening if the member desires to use Honey Bear or Cool Cat as a change purse.



DIVISION - 2ND GRADE

EXHIBIT:

A throw pillow from the instructions in the manual or one of your own design.

Effective 12/31/16

MINI SMALL ANIMALS - POSTER

DIVISION - KINDERGARTEN

EXHIBIT:

Draw or cut out pictures of one of the following: rabbit, goat, or chicken and mount it on an 11" x 14" poster with the three things the animal or bird needs to live. The three items may be drawn or cut out. Display the poster **VERTICALLY**.

VERTICAL
11" X 14"
Kindergarten 1 st Grade

DIVISION - 1ST GRADE - EXHIBIT:

Exhibit the completed chart for the chicken from the manual identifying the parts of the animal. Mount the chart on 11" x 14" poster and display it **VERTICALLY**.

DIVISION - 2ND GRADE - EXHIBIT:

Complete the Goat & Rabbit charts from the manual. Identify the parts of the two animals, color them, and below each animal or bird list the breed of that animal or bird, and list three (3) characteristics of that breed. Mount the two charts on a 14" x 22" poster and display **HORIZONTALLY**.

●In addition to naming the parts of the other two animals or birds, put at the bottom of your poster:

Breed:

Characteristics:

●The breed you will list will depend on how you have colored your animal. A black rabbit could be a New Zealand or a white rabbit with a black or dark nose, ears, feet, and tail would be a Californian.

A white or slightly cream colored goat would be a Saanen or if it is a Nubian goat it would be red to tan or black. The Nubian breed also has long drooping ears and is one of the best breeds for high butterfat milk production.

●Under characteristics you can list such things as whether the animal is principally a meat, show, or fur rabbit; how much a meat rabbit should weigh when you sell it, or if the particular breed you have colored might be a color other than what you have shown.

If the picture does not show something specific about the breed that should be known, tell about that; for instance, floppy ears on the rabbit. Maybe the goat you have colored is supposed to have longer hair than is shown. If that is the case, mention this under the characteristics. You might also tell whether the animal produces something besides meat for us to eat, or if the goat's skin or hair is used in some way, how many babies the animal usually has, what foods the animal eats. You may think of many other characteristics. Your leader can help you decide what animal breed you want to color and where to get the information about it.

●List at least three (3) characteristics.

HORIZONTAL
14" X 22"
2 nd Grade

Effective 12/31/16

MINI STEM

EXHIBIT – ALL (KINDERGARTEN, 1ST GRADE, 2ND GRADE)

Choose a different project each year from the suggestions in the project book or you may exhibit a project of your own that is age-appropriate considered STEM.

Effective 12/31/19

MINI SUN, STARS AND SPACE



DIVISION - KINDERGARTEN

EXHIBIT: CHOOSE ONE

1. Exhibit the comet made in *Activity 4* out of a foam ball, cotton balls and strips of paper. Name the comet.
2. Make a poster 14" x 22" displayed **HORIZONTALLY** showing one or two different constellations. You can use the ones shown in *Activity 6* of your manual or other ones that you have learned about. Put the name of constellation(s) below them on the poster.
3. A 14" x 22" poster about Planet X. Display the poster **HORIZONTALLY**. Include a drawing or picture of the planet and things you would find on the planet if you went to visit it.

DIVISION - 1ST GRADE

EXHIBIT: CHOOSE ONE

1. The asteroid you made in *Activity 3* of your manual out of a foam ball, brown paint; label the craters.
2. A 14" x 22" poster about one or two planets. Label the planets and tell something about them. Refer to *Activity 1* in your manual. Display the poster **HORIZONTALLY**.

DIVISION - 2ND GRADE

EXHIBIT: CHOOSE ONE

1. A solar system mobile made of materials of your choice. Label each planet. Refer to *Activity 1* of your manual for your solar system.
2. A model of the shuttle made of materials of your choice.
3. An 11" x 14" poster displayed **VERTICALLY** with a picture of the shuttle with its parts labeled. See *Activity 6* in your manual.

HORIZONTAL
14" X 22"

KINDERGARTEN
1ST GRADE

VERTICAL

11" X 14"

2ND GRADE

Mini Tractor Safety Lawn & Farm Tractors

Exhibit Requirements K-2:

All posters are to be 11" x 14" displayed horizontally.

- Draw a picture about one of the safety rules listed in the Mini Tractor & Safety project book. Exhibit the picture on an 11" x 14" horizontal poster. Under the picture state the rule in a few words.
- Find a picture about tractor safety and place it on an 11" x 14" poster displayed horizontally. Under the picture list the safety rule.
- Make a tractor safety scene using toy tractors, cut outs or tractors you have made from clay, play dough, etc. The display should be no larger than 12" x 12". The scene should depict one of the safety rules.
- Make a story book about tractor safety. The book should have at least 4 pages and a front and back cover.



12/31/09

MINI TREES

WHAT TO EXHIBIT - Do an activity below and exhibit at the fair. You must do a different exhibit each year.

This is a list of project activities that can be shown at the 4-H fair or other places. Pick a project activity you would like to try. You do not have to make them in any order. If you have any questions, please call the Extension Office. There are people there who can help you.

*Exhibit a project activity at the fair.

*Make a scrapbook of pictures showing the fun you had while making the project activities in this manual. On the cover of the scrapbook put the title “Mini Trees” and your name.

*Draw a picture of the ways your favorite tree looks in each of the four seasons.
Display on an 11” x 14” poster **HORIZONTALLY**.

*Make a collage of pictures cut from magazines. Show as many different kinds of trees as you can find. See if you can find at least one picture of a tree with an unusual shape. Display on an 11” x 14” poster **HORIZONTALLY**.

*Take a walk in a local park. Collect things that have fallen from trees onto the ground. Make a tree shaped poster and glue all the things you found onto the poster. Be sure to match the items with the part of the tree where they are found.
Display on an 11” x 14” poster **HORIZONTALLY**.

*Make a leaf rubbings book using 5 leaves you find that you think are interesting. To make the leaf rubbings, place each leaf on a flat surface with the vein side up. Next, place a piece of paper over the leaf and use the side of a crayon to rub color over it. Label each page with the leaf name. On the cover of the leaf rubbings book, put the title “Mini Trees” and your name.

HORIZONTAL

11” X 14”

MINI WILDLIFE



DIVISION - KINDERGARTEN EXHIBIT:

A birdfeeder made from a milk carton, milk jug or one of your own design. ***DO NOT*** put birdseed or rocks into your feeder when you bring it for exhibit. The birdfeeder must have a hanger so that it may be hung at the fair.

DIVISION - 1st GRADE EXHIBIT:

The colored, completed pages from your manual displayed on a 14" x 22" poster displayed HORIZONTALLY. Pages should appear from left to right in this order: Oscar Owl, Dudley Dove, Cheeky Chipmunk. Make sure each animal/bird is labeled (Oscar Owl, Seymour Snake, etc.) And that a line is drawn from the animal/bird to its food. Color the animals and birds the way they look in real life.

DIVISION -2nd GRADE EXHIBIT:

The colored, completed pages from your manual displayed on a 14" x 22" poster displayed HORIZONTALLY. Pages should appear left to right in this order: Casey Cardinal, Elmer Squirrel, Bob Bobwhite, Peter Rabbit, Robbie Robin. Label the animals and birds and draw a line from it to the food it eats. Make sure you color them the way they look in real life.



HORIZONTAL

14" X 22"

1ST & 2ND GRADES

Effective 12/31/08

MINI WILDLIFE ADVENTURES - BIRDS

DIVISION - KINDERGARTEN

EXHIBIT: CHOOSE ONE

1. Three plastic jars with three different insects, one in each jar. On a slip of paper write the common name of the insect, where the insect was captured, and your name. Tape one slip of paper to each jar.
2. Birds poster 11" x 14" displayed **HORIZONTALLY**. Cut pictures of birds out of magazines and make a collage poster.
3. Birds poster 11" x 14" displayed **HORIZONTALLY**. Using the birds from *Activity 1 - Birds of Indiana*, color and cut out the seven birds and put them on the poster. Have someone Xerox the pages before you begin.

DIVISION - 1st GRADE

EXHIBIT: CHOOSE ONE

1. A birds mobile. Xerox the pages of birds from Activity 1 - Birds of Indiana. Color and cut out the pictures, tape or glue string to each bird and tie the strings to two twigs tied together.
2. Bird feeder made from a milk carton, milk jug or material of your own choice. If you made a bird feeder in Wildlife in a previous year you cannot exhibit it in this division.
3. Airplane. Make an airplane according to instructions in the manual or a paper airplane of your own design that can be flown.

DIVISION - 2nd GRADE

EXHIBIT: CHOOSE ONE

1. A birdwatching chart poster 14" x 22" displayed **HORIZONTALLY**. The chart should contain columns for the bird species, how many you saw, date seen, time, and location. See Activity 3 – Birdwatching in your manual.
2. Animal Characteristics poster 14" x 22" displayed **HORIZONTALLY**. See *Activity 6* in your manual. The chart should include group, characteristics. Include pictures of the groups you describe.
3. A bird mobile. Xerox the pages of birds from Activity 1 – Birds of Indiana. Color and cut out the pictures, tape or glue string to each bird and tie the strings to two twigs tied together. You *may not* choose this exhibit if you did it in *Division-1st Grade*.

HORIZONTAL

14" X 22"

1ST & 2ND GRADES

Effective 12/31/08

