



# Steuben County 4-H Sheep Worksheet

## Grade 5



Name: \_\_\_\_\_ 4-H Club: \_\_\_\_\_

**Answers to these questions can be found in the “Sheep Resource Handbook” 4-H 194 R**

Use Chapter 1 to answer the following questions:

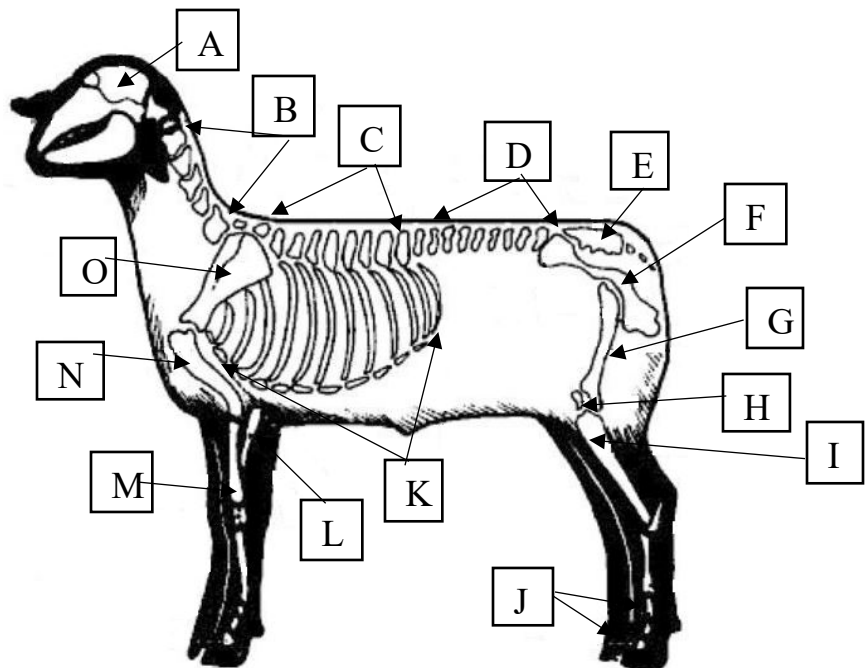
1. Write the letter of the definition next to the vocabulary word it matches.

- |                 |  |
|-----------------|--|
| ___ Incisors    | a. meat from sheep older than 12 months of age                             |
| ___ Polled      | b. naturally hornless  |
| ___ Tagging     | c. the fat within the muscle   |
| ___ Concentrate | d. a feed high in nutrients and low in fibrous materials                   |
| ___ Marbling    | e. front teeth   |
| ___ Gestation   | f. Trimming/shearing the wool away from the tail or dock area              |
| ___ Mutton      | g. Removal of the tail   |
| ___ Docking     | h. time from the date the ewe is mated with the ram until the lamb is born |

Use Chapter 2 to answer the following questions:

2. Match the correct letter to the correct part of the sheep.

- \_\_\_ Ribs
- \_\_\_ Thoracic Vertebrae
- \_\_\_ Sacrum
- \_\_\_ Humerus
- \_\_\_ Phalanges
- \_\_\_ Patella
- \_\_\_ Pelvis
- \_\_\_ Lumbar Vertebrae
- \_\_\_ Tibia
- \_\_\_ Scapula
- \_\_\_ Cranium
- \_\_\_ Radius
- \_\_\_ Cervical Vertebrae
- \_\_\_ Femur
- \_\_\_ Ulna



Use the feed label (and page 63 in the manual) to the right to answer the following questions:

3. What is the active drug ingredient?

\_\_\_\_\_

4. What is the maximum crude fat?

\_\_\_\_\_

5. What vitamins are in the feed?

\_\_\_\_\_

6. What disease does this prevent?

\_\_\_\_\_

7. What growth stage should receive this feed?

\_\_\_\_\_

16% LAMB FINISHER B

Net Weight 50 Pounds

**GRO-MOR**

16% Lamb Finisher B

**Medicated**

For the prevention of coccidiosis caused by *Eimeria ovina*, *E. crandallis*, *E. ovinoidalis*, *E. ninakohlyakimovae*, *E. parva*, and *E. intricata*.

**Active Drug Ingredient**

Lasalocid ..... 30 gm/ton

**Guaranteed Analysis**

Crude Protein	.....	Min. 16.00%
(Includes not more than 1.0% Crude protein equivalent from nonprotein nitrogen)		
Crude Fat	.....	Min. 2.50%
Crude Fiber	.....	Max 4.75%
Calcium	.....	Min. 0.40%      Max. 0.50%
Phosphorus	.....	Min. 0.60%
Salt	.....	Min. 0.40%      Max. 0.60%

**Ingredients**

Grain Products, Animal Protein Products, Plant Protein Products, Dicalcium Phosphate, Calcium Carbonate, Salt, Potassium Chloride, Magnesium Oxide, Vitamin A Acetate in Gelatin, D-Activated Animal Sterol (Source of Vitamin D3), Vitamin E Supplement, Menadione Dimethylprimidinol Bisulfite (Source of Vitamin K), Riboflavin Supplement, D-Calcium Pantothenate, Niacin, Vitamin B12 Supplement, Choline Chloride, Zinc Oxide, Ethylene Diamine Dihydrodiode, Cobalt Carbonate, and Sodium Selenite.

**Caution**

The safety of Lasalocid in unapproved species and breeding animals has not been established. Do not allow horses or other equines access to Lasalocid as ingestion may be fatal. Feeding undiluted or mixing errors resulting in excessive concentrations of Lasalocid could be fatal to sheep.

**Feeding Directions**

Feed as the sole ration to lambs from 80 pounds body weight to market. Feed continuously to provide not less than 15 mg. nor more 75 mg. of Lasalocid per head per day depending on body weight. Provide plenty of clean fresh water.

Manufactured by: XYZ Feed Company  
Sheep Division  
Anytown, USA 12345

Please answer the general questions below.

8. Why did you select this project?

\_\_\_\_\_  
\_\_\_\_\_

9. What type of housing are you providing for your animal and what three things would you like to improve in the care of your animal? \_\_\_\_\_

\_\_\_\_\_  
\_\_\_\_\_  
\_\_\_\_\_

10. Now that you have identified some areas to improve, please list your specific goals for this year.

\_\_\_\_\_  
\_\_\_\_\_  
\_\_\_\_\_

Completed (40 possible) \_\_\_\_\_

Accuracy of answers (30 possible) \_\_\_\_\_

Appropriate grammar (15 possible) \_\_\_\_\_

Neatness of record (15 possible) \_\_\_\_\_

Total \_\_\_\_\_

A = 86-100 points

B = 71-85 points

C = 70 points or less