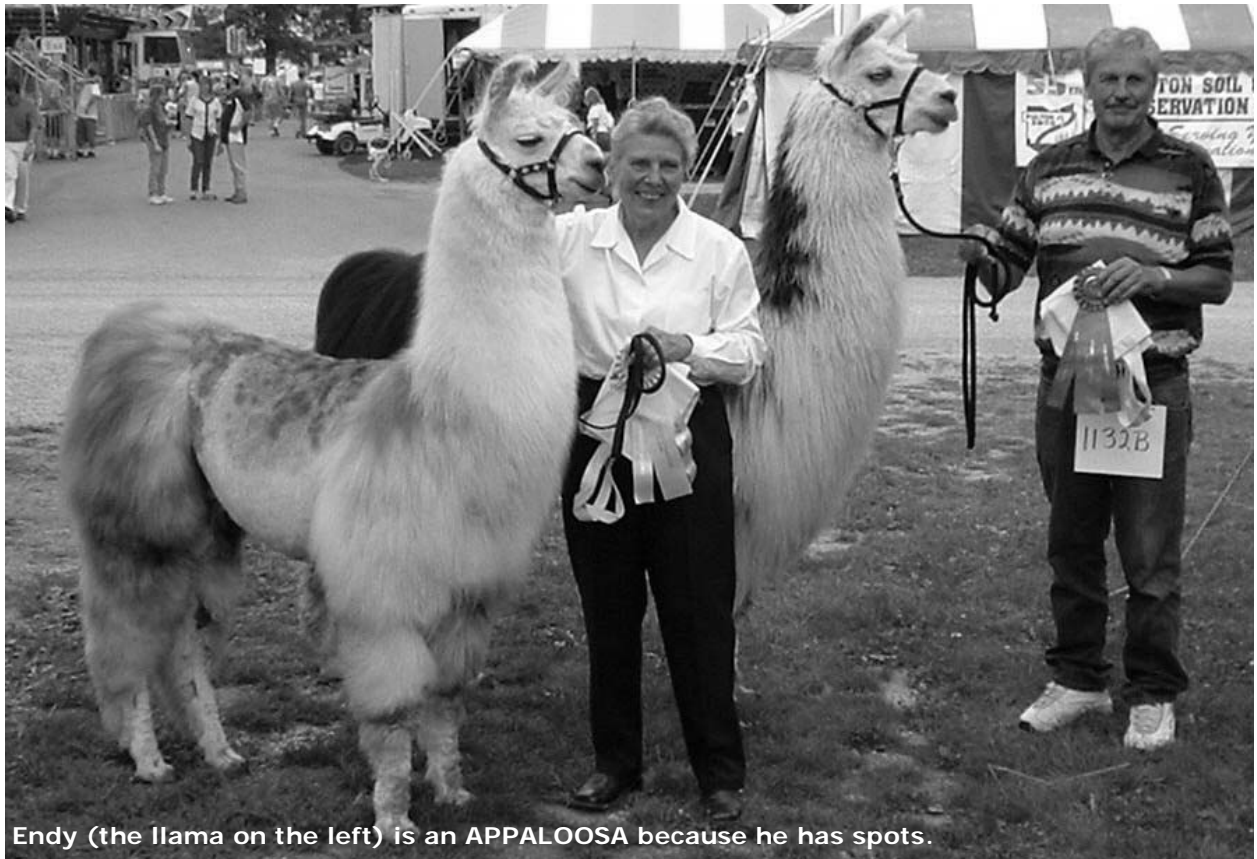


Know Your LLAMA ABC's



Endy (the llama on the left) is an APPALOOSA because he has spots.

This book was created for the Mini members of the Allen County 4-H Llama Club.

©2010 All rights reserved.

A is for **alpaca** used for wool, yarn, and goods.



Llamas and alpacas are social, herd animals that come from South America. Just like you have your family, llamas have a family, too. Their family is called the **Camelid** family. Llamas also have members of their family, just like you have members of your family. Vicuña, guanaco, and alpaca are all members of the llama's family.

The llama and alpaca are tame. This means they are **domesticated**. The vicuña and guanaco are not tame.

What is the name of the llama's family?

What country do llamas come from?

Who are members of the CAMELID family?

B is for **beasts of burden**. They'll carry your packs through the woods.

Llamas are beasts of burden. This means that they are used to carry loads for many miles a day through the woods and mountains.

Draw a picture below of your llama with a pack on its back.



C is for **carting**. Look at the load this one handles.

Some llamas can be taught to pull carts. There are classes at shows for cart llamas, and other llamas give rides as fundraisers or for other reasons.

Have you ever ridden in a llama cart? (circle one) Yes No

Describe what you know about llamas who pull carts.

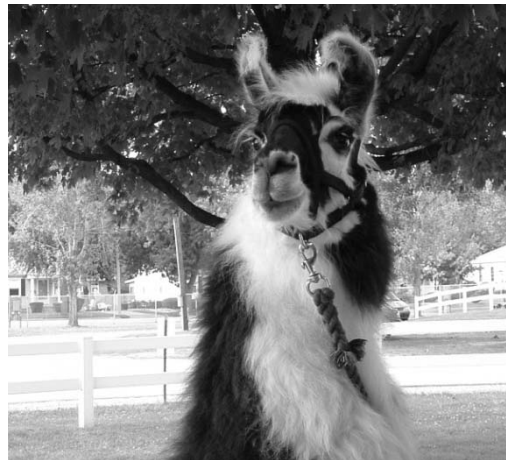


D is for **Dromedary** because they're cousins to camels.



Camels and llamas carry loads for people.

What other similarities do you see between llamas and camels?



E is for **ears**. Llamas hear it all, so no one can hide.

Llamas have large, banana shaped ears. Alpacas have smaller, straighter ears. Excellent hearing is one thing that helps llamas to be very good guard animals.

Circle the ears on the llamas in the picture.



F is for **feet**, so on rocks they don't slide.

Llamas are beasts of burden. This means that they are able to carry packs of our stuff through the woods or mountains on treks (or hikes).

In order for a llama to be safe on these travels, they have two toes and a soft, rubbery pad on the bottom of each foot. This makes them “sure-footed.”

They are able to maintain their balance on rocks and other dangerous ground. A llama's toenails must be cut in order to keep them from curling and in order to maintain the llamas' sure-footed abilities.



Photo courtesy ShagbarkRidge Llamas

Circle the answer to the questions below.

Llamas have hooves. True False

A llama's toenails must be cut in order to be safe. True False

Who trims the toenails on your farm? _____

G is for **guard llamas** who keep livestock safe from harm.



Llamas are very useful to farmers as **guard llamas**. With their large eyes and ears, llamas are very alert to all predators. That way, llamas can keep goats, sheep and other livestock safe.

Circle the guard llama in the picture above.

Are any llamas at your farm guard llamas? (circle one) Yes No

If so, what do they guard?

Why are llamas valuable as guard animals?

H is for **hay** that llamas are fed on the farm.



Hay is made from grass in a field that is cut, dried, and made into bales. The picture above on the left shows you what a hay field looks like after a tractor cuts the hay.

Llamas eat hay in the winter or other times when there is not enough grass in the pasture. There are several different types of hay such as alfalfa, grass, and oats. The hay is baled in either squares or round bales. Llamas need plenty to eat and lots of water to drink.

What kind of hay does your leader feed your llama? _____

Does your leader use round or square bales? _____

Name two other animals that eat hay.

I is for the **Incans** who domesticated llamas for us.

Incans are the people of an ancient civilization who used llamas in ways similar to how our Indians used buffalo or mules. They used everything, from their dung to their wool and hides to make their lives easier. The Incans “domesticated” llamas.



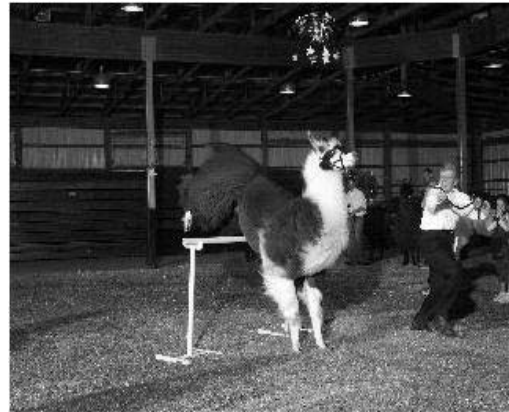
Cats and dogs are also domesticated.



Name two more domesticated animals.

What did the Incans train llamas to do for people?

J is for **jump**. Llamas leap with no fuss.



One of the classes at the 4-H fair is **Leaping Llama**. This is a class where the llamas jump over a bar that is raised higher and higher. The llama that jumps the tallest bar wins the class. Another time you would make your llama jump is in your performance class, but those jumps are not as high as in a leaping class. A lot of llamas have fun jumping and are very good at it.

Do you like to jump your llama? (circle one) Yes No

Draw a picture of your llama jumping.

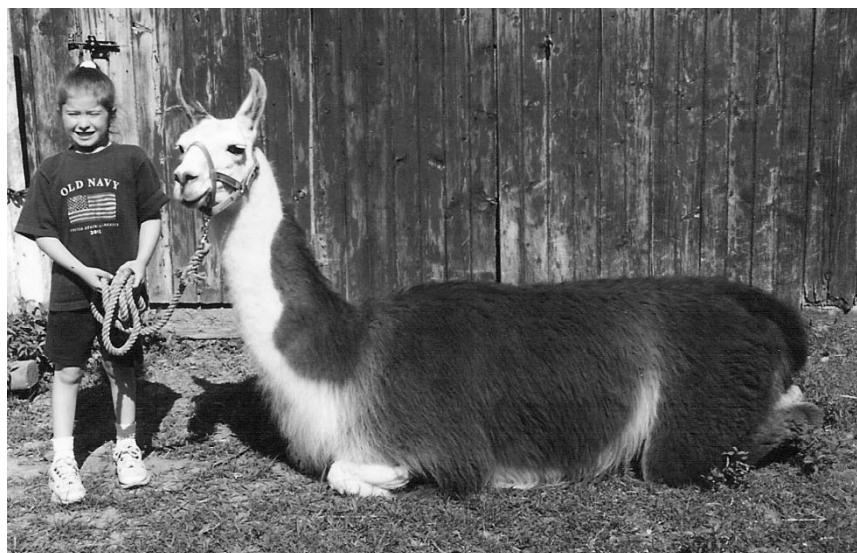
K is for **kush**. That is the word for “lie down.”



“Kush” is a useful command that is taught to a llama to make them lay down when we want them to. This is a very handy command when it comes to riding in a van or taking pictures.

Does your llama know how to kush? (circle one) Yes No

Ask your leader to show you how to make a llama kush and take a picture.



L is for **limbo** where llamas crawl on the ground.



Photo courtesy of David Elmore

Limbo is the class at the 4-H fair where llamas crawl under a barrier, and the goal is to see how low they will go. This class is basically the opposite of leaping. Some llamas are very good - they will get down on the ground and inch forward like an army man. Other llamas simply do not want to go any under anything lower than their withers.

Does your llama like to limbo? (circle one) Yes No

Watch a llama doing the limbo and describe what they do.

M is for **mouth** to eat what is around.

Llamas use their mouths for the same thing we use ours – to eat! They also use their mouths to drink water. Inside their mouths, llamas have teeth on the bottom in the front and a hard rubber gum on top.

Llamas have a **prehensile** lip. This means that the top lip of the llama's mouth is split. They use their split lip to grab and pull things like grass and hay, making it easier for them to eat.



Photo courtesy of David Elmore

Look at your llama's mouth and describe it.

What kinds of things do you see your llama doing with its mouth?

N is for **nose** to smell all that is found.

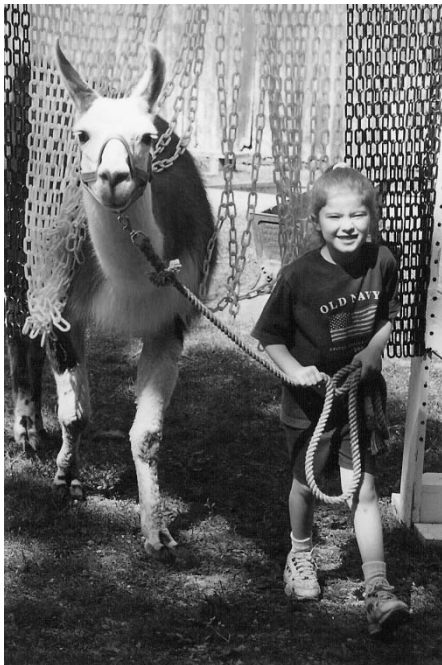


A llama's nose has two nostrils. They use their noses for smelling and breathing. Llamas breathe through their nose, unless they are too hot or just got spit on – then they breathe through their mouths.

Circle the llama's nose in the picture above.

O is for the **obstacles** that you do at a show.

Obstacles are different things that you practice walking your llama through at your leader's farm. Then, at the show, you get to do those obstacles in front of a judge. There are different obstacles, such as jumps, bridges, tires, and trailers (just to name a few).



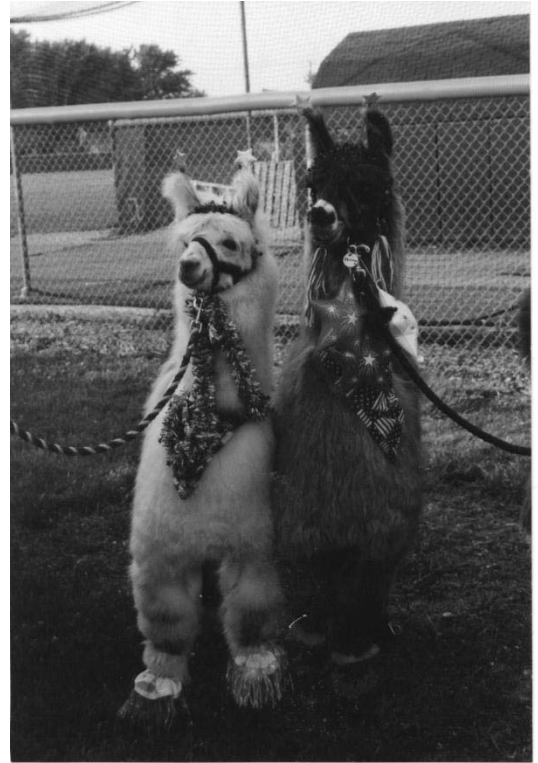
What are your favorite obstacles to do?

What do you think are the hardest obstacles?

P is for **parades** to do, where all the people go.

Parades are one of the things we do with the llamas that are called community service projects. We get the llamas cleaned up and decorated, and we walk through the parade route. Some of the llamas will stop and let people pet them along the parade route. This is a good way to get llamas out in public and draw attention to our 4-H project.

In the picture to the right, Dipstick and Cheeno are all dressed up and ready to go!



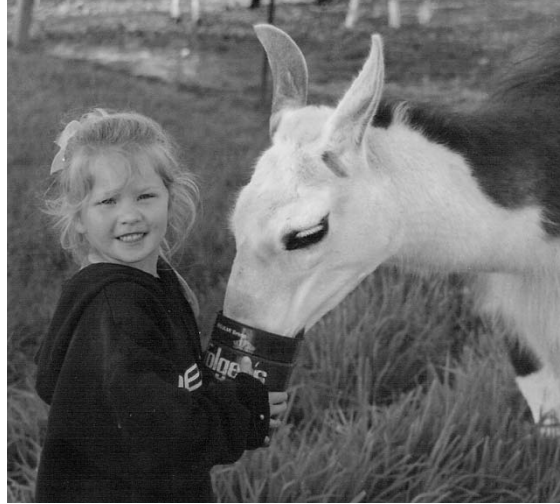
What do you do to get your llama ready for a parade?

What other community service projects do you do with your llama?



Doris Schlemmer at a nursing home with her llama, Zodiac.

Q is for **quite friendly** with kids.



Llamas have always been known for being very gentle with children and following along wherever they are being led. This is one thing that makes llamas and llama 4-H so special! Llamas all have personalities of their own, but they are very loving and compassionate to people.

Draw a picture of you and your llama.



R is for **radius**. Do you know where it is?

Llamas have a skeleton just like we do. Our bones support our body parts. That is why our arms and legs only bend in certain places (like our knees and our elbows).

The radius is a bone inside the llama's leg (see picture below). You have a radius, too. Do you know where it is? Inside your arm! (It's between your elbow and wrist.)

Circle the back bones and the neck bones of the llama below.



S is for **showmanship** – we hope the judge is kind!

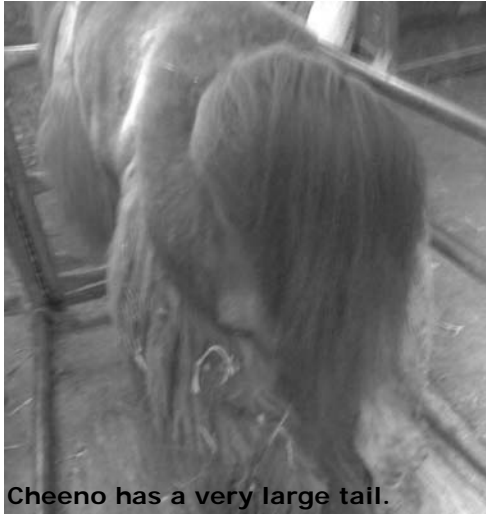


Showmanship is a class where the judge is looking at how well you can show your llama. We practice showmanship during our 4-H meetings, so we are ready for the class at the show. We have to get our llamas to stand still, hold your arm up, look at the judge, and smile.

Showmanship can be a hard class, but once you remember all the things you have to do, it can be a lot of fun, too! The llamas look so pretty, and the judges are always very nice.

List three things you need to remember during showmanship.

T is for **tail** that follows the llamas behind.

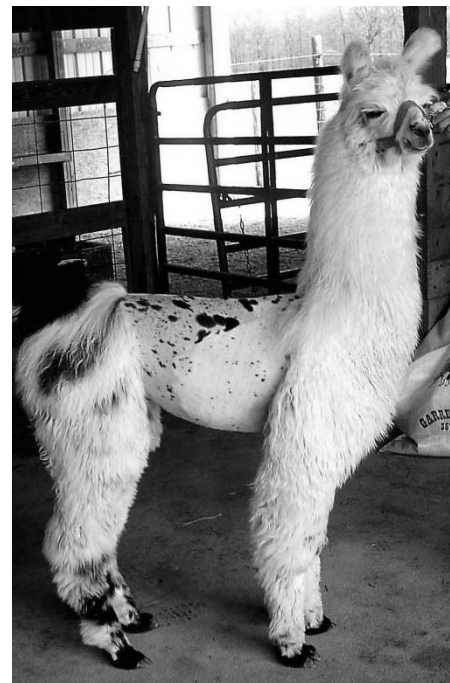


Cheeno has a very large tail.

The tail is another body part mini 4-H'ers should know. The showmanship judge, an audience member, or your leader might ask you different body parts. Other animals have very long, skinny tails that are used to chase flies away, but llamas primarily have tails to communicate to other llamas if they are happy and interested, or submissive (meaning “please don’t hurt me”), or if they just want to be left alone. Some llamas have very long tails

that hang half way down their legs, and others have very short tails that don’t have a lot of hair on them.

Draw a tail on the llama in the picture.



U is for **umbrella**, often held by a petter.



Walking under or holding an umbrella is often an obstacle in one of our classes we do with the llamas. Often times, the umbrella is held by a petter – someone who pets our llama as we walk by.

Place a picture of your llama below and draw an umbrella over its head.

V is for **veterinarian**, who makes llamas feel better.



Veterinarians are very special doctors who have gone to school to learn how to make animals feel better when they are sick or hurt. You would call a veterinarian if you have a llama that is sick or injured.

Purdue University has a program for people who want to learn how to be veterinarians. Purdue also has a Large Animal Hospital where they treat sick and injured livestock. In the picture to the left, you can see two of the Purdue students who took care of a baby llama that was born too early.

Draw a heart around the two doctors in the picture because of the love they give to the llamas.

Why might you need to call a veterinarian to take care of your llama?

W is for **wool**, which we groom to be shown.

Llamas have wool all over their bodies. The amount of wool means that they have light wool, medium wool, or heavy wool. There are different types of wool, but it all serves the same purpose: keeping the llamas warm and dry. People also use the wool from a llama to make into yarn, which then gets turned into articles of clothing, or blankets, etc. In order to show a llama, you must brush its wool nice and clean.



Light Wool



Medium Wool



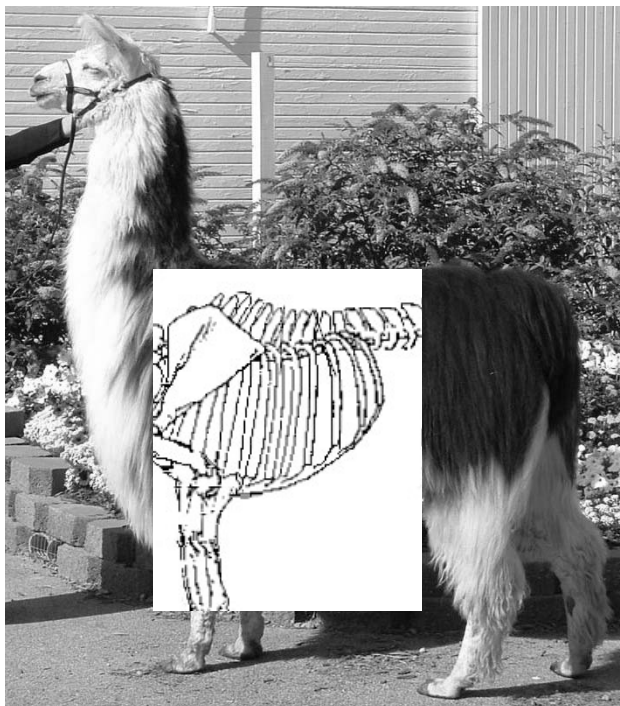
Heavy Wool

What type of wool does your llama have?

What color of wool does your llama have?

X is for **x-ray** to show us their bones.

When a llama has something wrong with its leg or another part of its body, the veterinarian may take an x-ray. This is like taking a picture of the insides of their body. An x-ray can show the doctor if a bone is broken.

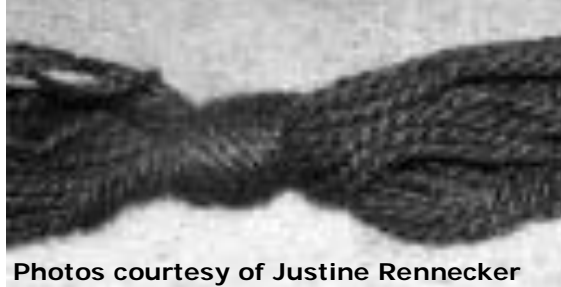


This is an example of what an x-ray taken of a llama may look like. You can clearly see the llama's back bone and ribs.

Have you ever had an x-ray? (circle one) Yes No

How would an x-ray help a veterinarian take care of a llama?

Y is for **yarn**, made of wool to make things for you.

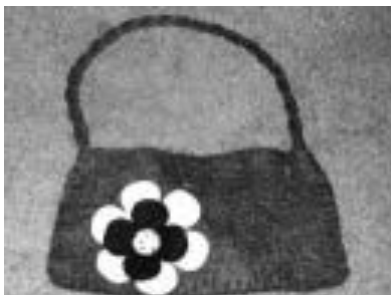


Photos courtesy of Justine Rennecker

Wool from a llama can be used to make yarn. This yarn can be used to make a blanket, afghan, gloves, sweater, and many other things that we find very useful.

What would you like to make out of llama wool?

Glue three different pieces of yarn below. It can be synthetic or made of whatever you like, but feel the yarn and imagine a llama's wool being cleaned up and spun into yarn.



This is a purse made out of llama wool made by a process called “felting.” This is just another example of what we can do with llama

Z is for **zoo** which houses many llamas, too.

The first time many people ever see llamas is at a zoo. We are among some of the lucky few who get to play with these awesome creatures and do hands-on activities with them!

Have you ever seen llamas in the zoo? (circle one) Yes No

What other animals do you see at the zoo?

