

September/October 2022 Newsletter

**Purdue Extension
Jennings County Office**

200 E Brown, St.

P O Box 365

Vernon, IN 47282

Phone: 812-352-3033

FAX: 812-352-3040

Hours: Monday - Friday

8 a.m. - 4 p.m.

www.extension.Purdue.edu/Jennings

Purdue Extension Jennings County



Purdue Extension Jennings County



PurdueExtJenCo

2022-2023 4-H Enrollment begins October 1st!!!



The 4-H enrollment window is October 1, 2022 through January 15, 2023. Starting October 1, youth in grades K-12 will be able to enroll in the Jennings County 4-H program at the 4HOnline 2.0 website at

<http://v2.4honline.com>.

2022 4-H Projects: We still have a few 4-H projects lingering in the office from the 2022 fair season, please make arrangements to pick them up ASAP!

In celebration of National Farm to School Month, the annual **Great Lakes Apple Crunch** will be celebrated throughout October. This event provides hundreds of thousands of students, teachers and others across the Midwest with a chance to try local apples and learn more about agriculture.

Check out more information at:

<https://www.cias.wisc.edu/applecrunch/>



Jennings County Staff

**Atina Rozhon**Health & Human Sciences
arozhon@purdue.edu**Deidre Wagster**Health and Human Sciences
Assistant
dwagster@purdue.edu**Jeff Walker**Community Wellness Coordinator
walke526@purdue.edu**Rebekah Barger**Ag. & Natural Resources
County Extension Director
bargerr@purdue.edu**Baylee Dwenger**4-H Youth Development
bdwenger@purdue.edu

Make sure to check out the full details enclosed for our upcoming Fall Festival & Annual Update!! Dinner will be served by the Jennings Co. 4-H Junior Leaders. We are requesting admission be a non-perishable food item(s) or free will donation to benefit the JCHS Food Pantry! See their current needs on the flyer.





Extension - Jennings County



Fall Festival & Annual Update



**SATURDAY
OCTOBER 29
4:00-7:00 PM**

JENNINGS CO. FAIRGROUNDS

Purdue University is an equal opportunity/equal access/affirmative action institution.

**Meet the Extension Staff and learn about our programs!
Dinner will be served by the Jennings Co. 4-H JR Leaders.**

A non-perishable item(s) or free will donation for the JCHS Food Pantry is requested for admission.

Special Events

5:00 PM - Raptors Rise

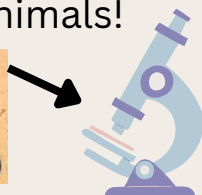
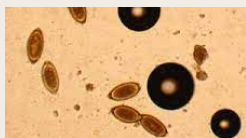


Raptors Rise is a wildlife rehabilitation center dedicated to helping injured and orphaned eagles, owls, hawks, and falcons. Raptors Rise is a nonprofit organization and is fully permitted through INDNR and Federal Fish and Wildlife.

6:00 PM - Apple Crunch



Curious about the fecal egg count service we offer? Come check out the creepy, crawlies that could be hiding inside your animals!



Rebekah will also be offering this service at half price during the event!



Dress up as your favorite book character and join us for a StoryWalk® and learn all about Purdue Extension along the way!



Rock the Blender Bike to create a delicious Apple Smoothie!



Interested in 4-H? Learn about our clubs and programs!



Learn Fun Facts about Pumpkins and sample a nutritional pumpkin soup!



STEM Activities and MUCH MORE!

For more information, please call 812-352-3033 or email Rebekah Barger at bargerr@purdue.edu

The StoryWalk® Project was created by Anne Ferguson of Montpelier, VT and developed in collaboration with the Kellogg-Hubbard Library. Storywalk® is a registered service mark owned by Ms. Ferguson.



THANK YOU TO OUR FALL FESTIVAL SPONSORS

Rose Acre Farms

JCB

Shepherd's Insurance

Friends of Extension

Jennings Co. 4-H Junior Leaders

Jennings Co. 4-H Livestock Committee

P&Y Farm Fresh Market

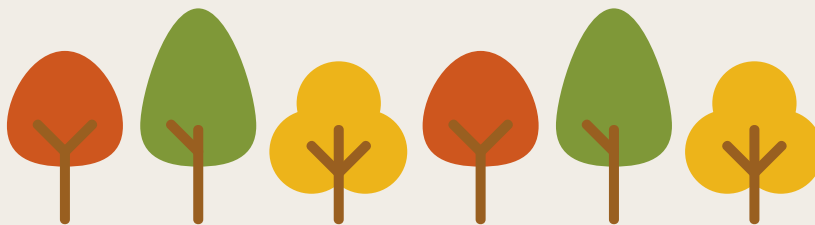


If you are interested in sponsoring an activity booth or door prize at our event, please contact Stacey at 812-352-3033.

JCHS FOOD PANTRY NEEDS

Oatmeal
Pancake Mix/Syrup
Poptarts
Cereal
Granola Bars
Crackers
Salt/Pepper
Cooking Oils
Canned Vegetables
Canned Soup

We will be accepting
non-perishable items
or free will donations
as admission to benefit
the JCHS Food Pantry!



September/October

Jennings County 4-H

2022



Dear 4-H Families & Volunteers,

As fall approaches, it's time to think about signing up for 4-H again! The 4-H enrollment window will be October 1, 2022 through January 15, 2023. Be sure to complete your enrollment online at **v2.4honline.com** or come into the extension office for help. If you are a returning 4-H member or volunteer you should have received a special mailing with enrollment instructions. Please review that for more information on enrollment. If you know someone who would like to join 4-H for the first time please have them contact the Extension Office at 812-352-3033 to receive enrollment information.

We are so excited for the upcoming 4-H year, and to see all the wonderful things the youth in Jennings County can do!

Sincerely,

Baylee Dwenger

4-H Youth Development Educator

2023 Jennings County Fair

The 2023 Jennings County Fair will be held June 12-17. A more detailed schedule will be sent out in the coming months as we plan for the upcoming year.

T-shirt Contest



All 4-Hers are welcome to turn in a t-shirt design for the 2023 4-H t-shirts. Designs need to be turned into the Extension Office by Friday, October 21st. The 4-Her with the best design will receive a prize.

State Fair Projects

Please have all state fair projects picked up ASAP.

Club Meetings & Events

- **Barefoot Bandits:** October 5, 6-7pm @ the Jennings Co. Community Building
- **JC Riders:** End of year awards, October 16, 2pm @ Goins Auction Barn
- **Junior Leaders:** October 20, 6pm location TBD

(Please let the extension office know of any updated club meetings or events)

Important Dates

October

**1 - 4-H ENROLLMENT
OPENS**

10 - 6:00pm Livestock
Committee Meeting @
Jennings Co. Public
Library

21 - 4:00pm 2023 4-H T-
Shirt Designs Due

24 - 6:00pm 4-H Council
Meeting @ Jennings Co.
Public Library

29 - 4:00-7:00pm Fall
Festival @ Jennings Co.
Fairgrounds

31 - 5:00-8:00pm
Sweet Street

November

14 - 6:00pm Livestock
Committee Meeting @
Jennings Co. Public
Library

28 - 6:00pm 4-H
Council Meeting @
Jennings Co. Public
Library

Jennings County 4-H

Sep/Oct
2022

Junior Leader Food Drive



Jennings County Coordinating Council Food Drive



HELP US FULFILL CURRENT PANTRY NEEDS FOR THE
JENNINGS COUNTY COORDINATING COUNCIL

- Canned Chicken
- Canned Tuna
- Canned Soups
- Cereal
- Egg Noodles
- Elbow Macaroni
- Peanut Butter
- Peas (canned)
- Spaghetti
- Spaghetti Sauce
- Tomatoes (diced)
- Tomato Sauce
- Tuna Helper
- Bars of Soap

Other non-perishable food welcome!

Drop off at the
Extension Office!

P
PURDUE
UNIVERSITY

Extension - 4-H Youth
Development

Junior
Leaders
INDIANA 4-H



200 E Brown St.
Vernon, IN 47282

The Junior Leaders are collecting nonperishable food which will be donated to the Coordinating Council. The food drive will run now through December 9.

Some of the Coordinating Council needs include these items...



In the spirit of competition, the junior leaders will host a pizza party for the 4-H club who collects the most food. Boxes for each club will be set up in the extension office.



Sweet Street 2022

Come find the 4-H booth at Sweet Street!

Can you find the four H's hidden in the
4-H newsletter?



HEAD



HEART



HANDS



HEALTH



State Fair Top Honors

Therese Hauersperger's Weather project was granted the Weather Sweepstakes award! Being a Sweepstakes winner is the highest honor at the state fair level. Therese also exhibited her sewing project in the Fashion Revue competition and placed in the top ten for the Free Choice Category! Another Jennings county stand out was Susan Davis. Her Woodworking project was one of the eleven projects selected from throughout the state as the State 4-H Leaders Choice! This honor means that Susan's cookie jar will be displayed in the State 4-H Office until the 2023 State Fair.



Hats & Tumblers for Sale

Hats are \$20.00 each and the proceeds support the 4-H Council. Tumblers are \$25.00 each and the proceeds support the 4-H Livestock Committee. Both the hats and tumblers can be purchased at the extension office.



Front Back

Let's Talk Parasites

Parasites can cause disease and loss of production in livestock impacting the welfare of livestock and an economic loss. Control measures and treatment options can be costly and time consuming. Five of the eight highest cost endemic diseases of cattle, sheep, and goats are caused by parasites. There are many different parasites that affect livestock in different ways. Parasites that commonly affect cattle, sheep, and goats include internal parasites like worms and external parasites like flies and ticks. Parasites can impact health and welfare of your livestock by causing blood loss, diarrhea, reduced appetite, and transfer of disease. A parasite infestation will result in a decrease in productivity such as reduced growth rates, milk production, reproductive weight, and may cause death. Creating a preventative program is crucial in decreasing the risk of parasite infestation.

Antiparasitic resistance has posed a major concern in recent years after the discovery that rotation dewormer is no longer effective. The best way to prevent antiparasitic resistance and to save money on dewormer is to perform fecal egg counts on your livestock's stool. Using this practice will allow livestock producers to use a more specific dewormer that attacks the parasites that are effecting the animal.

If you have questions or need help creating a parasite prevention plan contact Rebekah Barger at the Extension Office.



October Garden Calendar

Lawns, Woody Ornamentals, and Fruits

Keep plants, especially newly planted stock, well-watered until ground freezes.

Have soil ready to mound roses for winter protection. Do not mound or cover roses until after leaves drop and soil is near freezing, usually late November or early December.

Strawberry plants need protection from winter's extremes, but applying winter mulch too early may cause crowns to rot. Apply winter protection when plants are dormant but before temperatures drop below 20F, usually late November or early December.

Rake or shred large, fallen tree leaves, such as maple, to prevent them from matting down and smothering grass. Raking smaller leaves, such as honey locust, is optional.

Continue mowing lawn as needed.

August Garden Calendar Continued

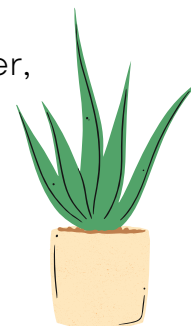
Indoor Plants And Activities

Keep poinsettia in complete darkness for 15 hours each day – for example, between 5 p.m. and 8 a.m. – for eight to 10 weeks until red bracts begin to show.

Pot spring-flowering bulbs to force into bloom indoors. Moisten soil and refrigerate 10 to 13 weeks. Transfer to a cool, sunny location, and allow an additional three to four weeks for blooming.

Houseplants, especially those grown outdoors during the summer, commonly drop some or many of their leaves in response to the lower natural light intensity in the autumn and reduced light intensity indoors.

Water indoor plants less frequently, and discontinue fertilizer as plants slow down or stop growing for the winter season.



Flowers, Vegetables, and Small Fruits

Harvest root crops and store in a cold (32 F), humid location. Storing produce in perforated plastic bags is a convenient, easy way to increase humidity.

Harvest brussels sprouts as they develop in the axils of the leaves from the bottom of the stem. Brussels sprouts will continue to develop up the stem.

Harvest pumpkins and winter squash before frost, but when rind is hard and fully colored. Store in a cool location until ready to use.

Harvest gourds when stems begin to brown and dry. Cure at 70-80 F for two to four weeks.

Harvest mature, green tomatoes before frost and ripen indoors in the dark. Warmer temperatures lead to faster ripening.

Asparagus top growth should not be removed until foliage yellows. Let foliage stand over winter to collect snow for insulation and moisture.

Remove plant debris from the garden to protect next year's plantings from insect and disease buildup. Compost plant refuse by alternating layers of soil, plant material, and manure or commercial fertilizer.

Have garden soil tested for fertilizer needs every three to five years.

Incorporate organic matter in fall to avoid the rush of garden activities and waterlogged soil in spring. Soils prepared in the fall tend to warm faster and allow earlier planting in spring.

Dig tender garden flower bulbs for winter storage. Gladiolus corms should be dug when leaves begin turning yellow. Caladiums, geraniums and tuberous begonias should be lifted before killing frost. Dig canna and dahlia roots after a heavy frost. Allow to air dry, then pack in dry peat moss or vermiculite, and store in a cool location.

Complete planting of spring-flowering bulbs.



References:

<https://www.agric.wa.gov.au/livestock-animals/livestock-management/livestock-parasites>

<https://agrilifeextension.tamu.edu/asset-external/common-cattle-parasites/>

<https://www.purdue.edu/hla/sites/yardandgarden/october-garden-calendar/?cat=32>



Seek and Find on the ANR Newsletter!!!

Find this pumpkin hidden somewhere in the ANR Newsletter!!!

Upcoming PARP Events

There are no upcoming PARP Events for the Southeast District at this time.


Featured Jennings ANR Services

Soil Sample and Testing:

Jennings Co. Extension Office offers soil sample bags and test forms for sample submission. We have a soil probe available to borrow. Office hours are Monday-Friday, 8am-4pm


Plant and Bug Identification:

If you need a plant, weed, or bug identified, bring it to our office and Rebekah Barger, our ANR Educator, should be able to assist you with that. Please call ahead at 812-352-3033 to make sure Rebekah is in the office and available to assist you. You can always take some photos of the specimen and email those to Rebekah for ID as well at bargerr@purdue.edu



Jennings County Extension now offers

FECAL EGG COUNTS



WHAT IS A FECAL EGG COUNT?

- A quantitative assessment and identification of the number of parasite eggs an animal is shedding at the time of sample collection

WHY SHOULD I GET A FECAL EGG COUNT ON MY LIVESTOCK?

- Fecal Egg Counts assess your livestock's parasite burden and target the parasite your livestock might be suffering from at the time of collection.

SAMPLE COLLECTION INSTRUCTIONS

- Use gloves to collect a fresh sample of feces from your livestock. The sample should still be both moist and soft. It should be collected and turned into the office no more than 6 hours from the time of defecation
- Collect at least 1/2 cup or 4oz. of feces and place in a clean ziplock bag.
- Label the bag with the species of livestock that the sample came from and the animal's identification.

Cost: \$10

LET'S REDUCE ANTIPARASITIC RESISTANCE!

Ag & Natural Resources

Sept/Oct
2022

Upcoming Events





2022 Purdue Extension Small Ruminant Lunch & Learn Webinars

Join the Purdue Extension Small Ruminant Team for an exciting line up of topics for 2022. See the full list on the next page

Permanent link for ALL Webinars in 2022:
<https://bit.ly/2022PurdueSheepGoat>



JANUARY 27, 2022: GENETICS OF WOOL SHEEP
FEBRUARY 24, 2022: PREPARING FOR LAMBING & KIDDING
MARCH 24, 2022: MANAGING THE EWE OR DOE AT LAMBING OR KIDDING
APRIL 28, 2022: INTERNAL PARASITES OF SHEEP & GOATS
MAY 26, 2022: SHOW PREPARATION: MEAT & DAIRY GOATS
JUNE 23, 2022: SHOW PREPARATION: WOOL & HAIR SHEEP
JULY 28, 2022: EVALUATING FORAGE NEEDS OF SHEEP & GOATS
AUGUST 25, 2022: RAISING HAIR SHEEP
SEPTEMBER 22, 2022: FENCING & HOUSING FOR SHEEP & GOAT
OCTOBER 27, 2022: HOOF CARE
NOVEMBER 17, 2022: FIRST AID FOR SHEEP & GOATS
DECEMBER 15, 2022: WINTER FEEDING OF SHEEP & GOATS
JANUARY 26, 2023: PREPARING FOR LAMBING & KIDDING





SAVE THE DATE

Saturday October 15, 2022 2 PM EST

90th IBEP Performance Tested Bull Sale & Springville Feeder Auction Heifer and Cow Sale

Sale Location: Springville Feeder Auction— Springville, Indiana
View and Bid online with CattleUSA.com

IBEP Website: <https://ag.purdue.edu/departments/ansc/ibep/index.html>
Springville Feeder Auction Market Website: springvillefeederauction.org/





FORESTRY FIELD DAY

FRIDAY NOVEMBER 4
10 AM
4425 East 350 North, Butlerville
1 PM
1816 N County Rd 950 W, Holton
Cost \$15/\$25 family

2022-2023 Indiana Beef Cattle Association (IBCA) and Purdue Area 1 Beef Meeting

WHEN: Wednesday, December 14th, 2022 at 6:00 pm
WHERE: South East Purdue Ag Center (SEPAC), Butlerville, IN
WHY: The meetings will feature great food and valuable information on a variety of beef topics. IBCA will provide an update on current policy and programs. Purdue Dept. of Animal Science will provide the educational presentation.
HOW: RSVP to Jennings County Extension office at 812-352-3033 by 12/3/22.

The counties in this AREA are: Bartholomew, Brown, Dearborn, Decatur, Jackson, Jefferson, Jennings, Ohio, Ripley and Switzerland.

Current IBCA Director: Fred Glover

An IBCA Area Director will be elected at this meeting. All beef producers are eligible to vote in the elections as the Director will represent their respective area on the IBCA Board of Directors which oversees the IBCA membership programs and the utilization of the national beef checkoff funds.

Sponsors:

HOOSIER ENERGY
A Truist Energy Cooperative



It is the policy of the Purdue University Cooperative Extension Service that all persons have equal opportunity and access to its educational programs, services, activities, and facilities without regard to race, religion, color, sex, age, national origin or ancestry, marital status, parental status, sexual orientation, disability or status as a veteran. Purdue University is an Affirmative Action Institution.

Southeast Purdue Agricultural Center 10 – 11:30 AM

Join Purdue forester Don Carlson at this Jennings County property. Topics include ID of oak wilt disease and management. After the tour meet in the SEPAC classroom for a lunch break, bring your own sack lunch, drinks will be provided.

Following lunch travel on your own to the afternoon tour, 15 minutes away.

Meisberger property 1 – 3:15 PM

Located in NW Ripley County. The tour will include two woodland sites: A tornado damaged area 32 years after a tornado in June 1990 completely leveled and destroyed all of the trees in the woodland, and a dense mixed hardwood tree planting, 24-years-old on approximately 5 x 5' spacing.

Sponsored by:
Indiana Forestry & Woodland Owners Association

Indiana Forestry Educational Foundation

Indiana Tree Farm Committee

In partnership with Indiana Division of Forestry

This event is part of the 2022 Woodland Owner Conference.

Register and learn more at:

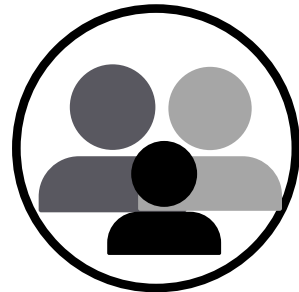
<https://www.ifwoa.org/resources/annual-woodland-owner-conference/>

Contact IFWOA at
ifwoa1@gmail.com or
765-496-5013

Get WalkIN'

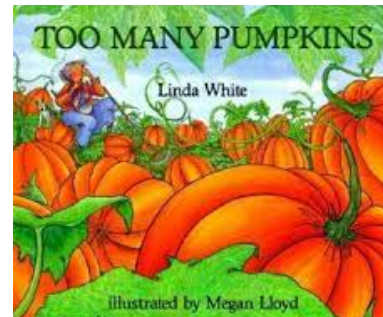


Fall is a great time to walk more! Whether you need additional motivation or need motivation to get started, Purdue Extension has a free email based program to help you. We have our next Get WalkIN' starting on October 17. Contact the office to join at 812-352-3033 or email Deidre at dwagster@purdue.edu.



StoryWalk® @ Extension Fall Festival & Annual Update

StoryWalk® is an innovative and delightful way for children – and adults! – to enjoy reading while walking down a trail or path. Laminated pages from a children's book are attached to stakes to read along the way. As you stroll along, you're directed to the next page in the story. Please join us for our first StoryWalk® and other activities showcasing our Extension programming during our Fall Festival & Annual Update on Oct. 29th! Please see our enclosed flyer for more details.



The StoryWalk® Project was created by Anne Ferguson of Montpelier, VT and developed in collaboration with the Kellogg-Hubbard Library. Storywalk® is a registered service mark owned by Ms. Ferguson.

Reading Made Fun

We are reading in all JCSC, St. Mary's, and CC-NV Kindergarten classes as well as OVO Head Start this year (that's over 300 youth)! We are needing to increase our reading volunteer pool to support our additional efforts. If you are interested in reading during the months of December to May, please contact our office. Background checks and minor safety training will be required.

READING MADE FUN VOLUNTEER TRAINING

.....
Nov. 29 10 AM
Extension Office
Contact Deidre
for more info!

Farm Fresh Foods (F3)

Our 2022 F3 twelve-week program wrapped up at the end of September. Eight participants received weekly education on improving their overall health and how to incorporate fruits and veggies into their daily meals. We would like to thank the Schneck Foundation for their generous sponsorship and to our partners at the Jennings County Farmers Market for supporting this program



Nutrition Education Program Updates

Hi all,

Can you feel it? Fall is in the air! From the copious number of tomato sandwiches I've been eating to the great running and walking weather – this is a time of year that I often feel lends itself best to healthy activities (as long as you can handle the allergies).

- The Bike and Pedestrian Master Plan process has begun. The Jennings County Commissioners approved our Request for Qualifications, which will be sent out to potential consulting firms that will help our local advisory team write the master plan. Be on the lookout for announcements of public input sessions in a few months!
- This month is Walktober – a chance to get out and move around in many different ways in our community. On the next page is a community calendar listing all the opportunities to get out for a walk and socialize in Jennings County. Included in that is Walk with a Doc, a chance to learn from Dr. Jennifer Stanley and Dr. Dashrath Gautam before an easy group walk. It's a simple concept that promotes health - join us Friday, October 21st at 4pm at the North Vernon City Park and check out the other events in the calendar!
- If you're looking for a way to volunteer and help people get the food they need this year, then come help the monthly Gleaners Mobile Food Pantry Distribution being held every 2nd Friday from 4-6pm (volunteers needed at 3pm) at the CSL Clubhouse. More details are in the flier on the next page.
- The Jennings County Community Foundation recently convened a meeting of community organizations and individuals that provide food to youth in Jennings County. During the meeting attendees decided a Jennings County Food Security Coalition should form to coordinate across groups and make sure all children in Jennings County have access to nutritious food. If you are interested in helping this group please contact me at 812-352-3037 or the Jennings County Community Foundation at 812-346-5553.

If you're interested by this work or know someone who is, contact our office or email me at jeffwalker@purdue.edu. Many groups in our community are looking for people with the willingness to work on making Jennings a healthier place. I'd be happy to connect you with one of those efforts!

Healthfully yours,
Jeff Walker
Community Wellness Coordinator



National Fruits & Veggies Month–September



September is National Fruits & Veggie Month and the arrival of one of our favorite seasons, APPLES! There are many ways to enjoy this seasonal favorite. Scan the QR code to check out fruitsandveggies.org's "Top 10 Ways to Enjoy Apples". Then head over to our Food Link webpage for this Hurry Up Baked Apples recipe! <https://bit.ly/3CnKabW> **have a plant.**

Cybersecurity Awareness Month



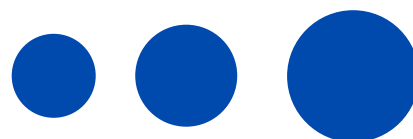
October has been Cybersecurity Awareness Month since 2004. Follow our Purdue Extension-Jennings County Facebook page as we share tips to keep you safe!

What's Cybersecurity you ask?? It is the art of protecting networks, devices, and data from unlawful access or criminal use, and providing confidentiality, integrity, and availability of information. Much of your personal information is stored either on your computer, smartphone, or tablet. Knowing how to protect your information is important, not just for individuals but for organizations, as well. Every time you use the internet, you face choices related to your security. Your security and the security of the nation depends on making responsible online decisions. Making the internet safe and secure requires all of us to take responsibility for our own cybersecurity behavior.

KNOW YOUR CYBER BASICS

- **Think Before You Click:** Recognize and Report Phishing: If a link looks a little off, think before you click. It could be an attempt to get sensitive information or install malware.
- **Update Your Software:** Don't delay – if you see a software update notification, act promptly. Better yet, turn on automatic updates.
- **Use Strong Passwords:** Use passwords that are long, unique, and randomly generated. Use password managers to generate and remember different, complex passwords for each of your accounts. A password manager will encrypt passwords securing them for you!
- **Enable Multi-Factor Authentication:** You need more than a password to protect your online accounts, and enabling MFA makes you significantly less likely to get hacked.

For more information, check out <https://www.cisa.gov/cybersecurity-awareness-month>



Community Connections



— OCTOBER —
**DOMESTIC
VIOLENCE**
Awareness Month

Come join us and take a stand against Domestic Violence in our community! We will be holding a walk at the North Vernon City Park on the evening of October 27th, 2022 from 6-7pm

Together we can put an end to Domestic Violence! All ages are welcome!

Thank you for your support!

PO Box 455 Vernon, IN. 47282 812-346-1592 Fax: 346-3017

www.jccdv.org

MOBILE FOOD PANTRY



AT **BOYS AND GIRLS CLUB OF CSL**

PLACE

3342 COUNTRY MANOR BLVD,
NORTH VERNON, IN 47265

**FREE
FOOD**

WHEN

OCT. 14TH
FROM 4PM-6PM

WHILE SUPPLIES LAST

**walk[®] with a
DOC**
Jennings

Date: Friday, October 21st, 2022

Time: 4pm

Location: North Vernon City Park

(Farmers Market Shelter - 604 N. State St., North Vernon)

More Info



Join Dr. Jen Stanley and Dr. Dashrath Gautem for a fun and safe place to walk, learn about health, and meet people.

This month we will mark Breast Cancer Awareness Month with a talk about screenings.

The event is **FREE** and all are welcome!



**Ascension
Medical Group**



**PURDUE
UNIVERSITY**

Extension - Nutrition
Education Program

Questions?

jeffwaker@purdue.edu
(812) 352-3037

We are a local chapter of an international 501(c)3. Learn more at walkwithadoc.org

Community Connections-continued

WALKTOBER 2022

LOOKING TO GET OUTSIDE FOR FRESH AIR WHILE THE WEATHER IS WARM-ISH AND THE LEAVES ARE ORANGE-ISH?

CHECK OUT THESE COMMUNITY EVENTS AND GET MOVING!



SUN	MON	TUE	WED	THU	FRI	SAT
2	3	4	5	6	7	8 Autumn Stroll Stellar Plaza (\$) (5:30-8PM)
9	10	11 Calli Nature Preserve Walk (6:30pm)	12	13	14 Vernon Ghost Walk (\$) (6:30-9:30pm)	15 Vernon Ghost Walk (\$) (6:30-9:30pm)
16	17	18 Vernon Walk at Annex Building (4:30pm)	19	20	21 Walk with a Doc City Park (4PM)	22
23	24	25	26	27 Light Up the Night City Park (6-7 PM)	28	29
30	31 Sweet Street Downtown NV (5-8PM)	Autumn Stroll Help pick the winners of Main Street's decorating competition and eat a farm to table meal. Come downtown!	Ghost Walk Visit the Jennings Historical Society as they share the legends of Vernon with help from local drama students.	Walk with a Doc Come walk with Dr. Stanley and Dr. Gautam to get your steps in at the City Park! It's the group's one year!	Light Up the Night Raise awareness of domestic violence and support victims with JCCDV. Wear your purple!	Sweet Street Bring the kids to the best trick or treating around on Halloween night and get your steps in!

Purdue Extension NEP is an equal opportunity provider.

JENNINGS COUNTY COORDINATING COUNCIL

CHRISTMAS FOOD BOX SIGN-UP

October 17, 18, 20 & 21
9:30 AM - 12:30 PM

203 Hoosier St.
North Vernon, IN 47265

Contact Bee Murphy at 812.346.5183
for more details or to donate.



**DONATIONS
NEEDED**

Christmas is celebrated for so many through the generous hearts of our community.

We are seeking monetary donations to purchase supplies needed to fill our Christmas baskets.