

November/December 2020 Newsletter

Purdue Extension Jennings County Office

200 E Brown, St.

P O Box 365

Vernon, IN 47282

Phone: 812-352-3033

FAX: 812-352-3040

Hours: Monday - Friday

8 a.m. - 4 p.m.

www.extension.purdue.edu/Jennings



Purdue Extension Jennings County



Purdue Extension Jennings County



PurdueExtJenCo



2020 Purdue Extension-Jennings County Annual Meeting

December 11, 2020 12:00 PM

Jennings County Government Center

The 4-H enrollment window is through January 15, 2021.

Youth in grades K-12 will be able to enroll in the Jennings County 4-H program at the **NEW** 4HOnline 2.0 website at <http://v2.4honline.com>.



PURDUE FAST START

PROGRAM

Learn more at:

<https://www.admissions.purdue.edu/purdufaststart/>



Jennings County Staff



Atina Rozhon

Health & Human Sciences
County Extension Director
arozhon@purdue.edu

Jeff Walker

Community Wellness Coordinator
wake526@purdue.edu



Melessa Wiesehan

4-H Youth Development
mwieseha@purdue.edu



ANR Extension Educator-Vacancy
Please see the ANR Update page
in this newsletter for more details.



Purdue University's winter recess will be held December 21st- January 1, 2021.

Our Extension Educators will have limited availability during this timeframe.

**Save the date for this four part series with
Atina on Tuesdays starting January 19
through February 9th in 2021!**



Extension - Jennings County

2021
Virtual
**LUNCH
& LEARN
SERIES**



Jennings County 4-H

November/December 2020

Dear 4-H Families and Volunteers,

4-H enrollment has begun and will continue through January 15, 2021. Youth in grades K-12 may enroll in the Jennings County 4-H program at the NEW 4HOnline 2.0 website at <http://v2.4honline.com>.

Paper enrollment forms are available at the Extension Office. Please contact the Extension office at 812-352-3033 if you need assistance with enrollment.

The enrollment fee is \$5.00 for Mini 4-H members in grades K-2 and \$20.00 for regular members in grades 3-12. If you are paying your 4-H program fees with a check or cash, please try to submit your payment to the Extension Office within 2 weeks of your enrollment date. Checks are payable to **Jennings CES Fund**.

Thank you to those 4-H families who were able to attend the 2020 Awards Drive Thru event on Monday, October 5. There are still a few awards and t-shirts at the Extension Office. Please make arrangements to pick up those items by December 1.

State 4-H Projects: The following state 4-H projects were updated for the 2020-2021 4-H program year: Beekeeping, Computer, Electric, Food Safety Policy, Photography, and Sewing. Once all state and county 4-H project updates are complete, project requirements will be made available to all members. More information will be shared with 4-H families as soon as possible

4-H Scholarships: The State 4-H scholarship flyer is included in this newsletter. All applications are due via electronic file to the Extension Office by January 25, 2021.

Sincerely,

Melessa Wiesehan

Melessa Wiesehan— Extension Educator, 4-H Youth Development



PURDUE
UNIVERSITY®

Extension

4-H Livestock!

Beef and Dairy Beef Animal ID (Tagging) Days

Friday, February 26, 5-7 pm

Jennings County Fairgrounds

ALL market steers (beef and dairy beef) and commercial/non-registered heifers must attend the Animal ID day. Animal ID **worksheets**, requirements and 4HOnline instructions will be mailed (after January 15) to 4-H members enrolled in the beef and dairy projects.

If you do NOT receive this information in the mail, contact the Extension Office.

A completed worksheet MUST be brought to Animal ID Day.

NEW THIS YEAR! Beef and Dairy Beef Steer information must be entered into 4HOnline no later than MAY 15, 2021.



YQCA training will be implemented again this year. All 4-H members exhibiting animals at the fair must complete their YQCA training. "YQCA is designed as an annual education and certification program focused on food safety, animal well-being and character awareness for youth ages 8 to 21 producing and/or showing pigs, beef cattle, dairy cattle, sheep, goats, rabbits and poultry."

Visit <http://yqca.org> to learn more!

In-person YQCA training dates will be advertised in January.

Premise ID

Registering your premises may be done online, at no charge, and takes only about 5 minutes. Visit the Indiana State Board of Animal Health's (BOAH) website: **<https://www.in.gov/boah/2328.htm>**. Please get your Premise ID number prior to tagging day! All Indiana premises associated with the purchase, sale and/or exhibition of cattle, swine, sheep, goats and farmed cervids must be registered by state law.

4-H EVENTS!

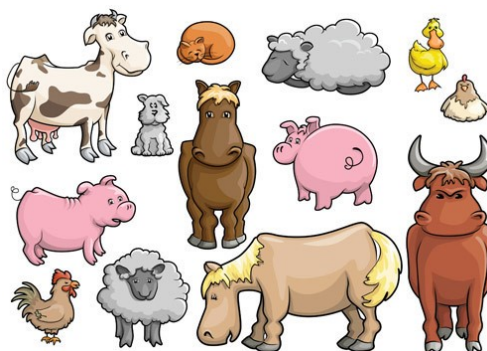
Furry and Feathered Friends Zoom Program

For youth in grades K-5

Wednesday, November 18 at 6 pm

Youth will “show and tell” others about their pets while learning about animal species, basic pet care and animal science careers. Email Melessa at mwieseha@purdue.edu or call 812-352-3033 to register for the program and to receive the Zoom meeting invitation.

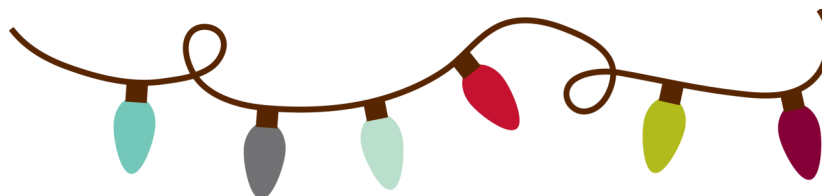
Owning an animal is not a requirement. Any youth in grades K-5 interested in learning more about animals may register for the program.



Christmas in the City Parade

The Junior Leaders 4-H Club and the 4-H Royalty and Court are planning to have an entry in this year’s Christmas in the City parade on Saturday, December 5. All Jennings County 4-H members are invited. Melessa will write a safety plan to include all members and clubs. The Junior Leaders plan to have just one wagon/trailer. The majority of members will be walking in the parade in order to follow social distancing guidelines. If 4-H Club Leaders want to coordinate their own entry, please contact Melessa at mwieseha@purdue.edu.

More information about the parade will be shared on the Purdue Extension Facebook page and through 4HOnline emails.



4-H Club Connection



Due to ongoing COVID-19 precautionary measures, some clubs may hold 4-H meetings virtually or wait to start meetings later in the 4-H year. 4-H Club Leaders who choose to meet in-person are required to submit a safety plan to the Extension Office 4 weeks prior to the event. 4-H members, family members and guests attending 4-H meetings and events will be required to wear face coverings and observe social distancing guidelines. Please be patient with 4-H Club Leaders as they determine what is best for them and their clubs. Everyone's safety is our first priority!

General Project Clubs:

Barefoot Bandits— Jessica Bailey (baileyjm12@gmail.com or 812-592-5279)

Muscatatuck Mud Puppies - Jeff Jones (812-592-2496)

Shining Stars - Mary Burton (812-592-6201)

Zenas Livewires & Plowboys – Cheryl Ward (cward@jcsc.org or 812-344-3409)

Project Specific Clubs:

Beef Club – Jenny Vogel (jlvogel89@gmail.com or 812-592-2144)

JC Riders – Krysta Thompson (krystaydanton@gmail.com or 812-592-1014)

Junior Leaders – Melessa Wiesehan (mwieseha@purdue.edu or 812-352-3033)

Llama Club – Connie Taylor and Jenny Gabbard (jgab38@aol.com or 812-756-1106)

Shooting Sports – We are searching for NEW club leaders. Contact Melessa at 812-352-3033 if you are interested in learning more about being a club leader or a member!

Swine Club — Chelsie Sharp (jenningscounty4hswineclub@gmail.com or 812-592-8619)

Tractor Club—Dave Vogel (jlvogel89@gmail.com or 812-592-2144)

Tractor Club is open to youth in grades 3-12.



4-H COUNCIL & FAMILY FUN!

NEW 4-H COUNCIL MEMBERS

The Jennings County 4-H Council will elect new council members at the annual meeting on November 30, 2020 at 6 pm at the Jennings County Public Library.

There are two vacancies to fill on the 4-H Council.

Thank you to Rhonda Ponsler and Jennifer Wahlman for their service to the 4-H program.

4-H families may vote for the new candidates by completing this survey link by November 27.

https://purdue.ca1.qualtrics.com/jfe/form/SV_1Uq46ZNXHEPVTmt

If 4-H families would prefer an alternate way to vote, please call the Extension Office at 812-352-3033 or email Melessa at mwieseha@purdue.edu by November 23.

Family Fun: The Importance of Being Outside

The following are 10 benefits from being outside:

1. Relieves Stress
2. Strengthens Immunity
3. Sharpens Your Focus
4. Helps Develop a Healthier Diet
5. Calms the Mind
6. Aids in Weight Management
7. Betters Your Short-Term Memory
8. Improves Vision
9. Fights Nature Deficit Disorder
10. Increases Longevity



Spend time with your family enjoying outdoor activities and reap the benefits listed above. Jennings County is blessed with lots of parks and nature areas. Go for a nature walk with your family. Included in this newsletter is a nature scavenger hunt. Enjoy!

Source: Askthescientist.com

Scavenger Hunt- *Nature Walk*

Can you find all 20?



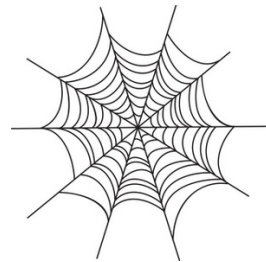
bird



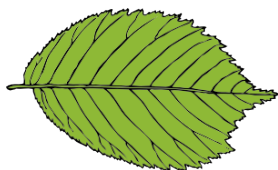
tree roots



ant



spiderweb



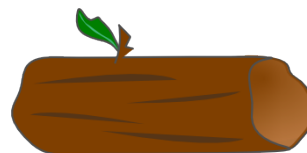
green leaf



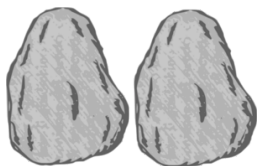
acorn



flower



log



two similar rocks



mushroom



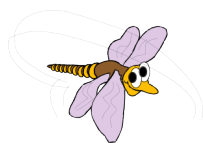
squirrel



tall grass



stick that looks
like a letter 'y'



flying bug



brown leaf



cloud



dandelion



animal footprints



wild berries



pine cone



2021 SCHOLARSHIP OPPORTUNITIES

Senior Year Scholarship

Available to 4-H members in their senior year of high school

Club Scholarship

Available to 4-H members entering Purdue University majoring in the College of Agriculture or select majors in the College of Health and Human Sciences

Purdue Horticulture & Landscape Architecture Scholarship

Available to a 4-H member majoring in horticulture or landscape architecture at Purdue University and studied plant science in 4-H.

Accomplishment Scholarship

Available to 4-H members in grades 10-12 of high school and the year immediately following high school graduation. The purpose of the 4-H Accomplishment Scholarship is to recognize youth who have excelled in life skills development through their 4-H activities and involvement.

Categories: Animal Science—Meat and Milk Production; Animal Science—Companion and Small Animal Production; Citizenship; Communications; Engineering and Technological Science; Healthy Living, Food and Nutrition Science; Leadership Development; and Plant and Environmental Science. Three additional categories are reserved for applicants demonstrating life skills development in more than one of the previously listed categories. Those are Premier Achievement, Premier Citizenship, and Premier Leadership.

Eligibility: Applicants must be in grade 10, 11, 12, or their first year immediately following 4-H enrollment eligibility at the time applications are due. While an applicant does not have to be a current 4-H member, they must demonstrate multiple years of involvement in Indiana's 4-H Youth Development Program.

Youth who have previously been awarded a \$1,000 accomplishment scholarship are only eligible to compete in the Premier Achievement, Premier Citizenship, and Premier Leadership categories. Youth who have previously been awarded a \$2,000 scholarship are no longer eligible to compete in any category.

Awards: A minimum of thirty \$1,000 scholarships will be awarded to youth based on their demonstration of life skills development in these eight categories: Animal Science—Meat and Milk Production; Animal Science—Companion and Small Animal Production; Citizenship; Communications; Engineering and Technological Science; Healthy Living, Food, and Nutrition Science; Leadership Development; and Plant and Environmental Science.

A minimum of one \$2,000 scholarship, and a silver tray, will be awarded in each of these categories: Premier Achievement; Premier Citizenship; and Premier Leadership.

Additional scholarships may be awarded depending on sponsorship availability. The number of scholarships awarded in each category may be adjusted to meet special criteria of a particular sponsor.

Visit bit.ly/IN4Hscholarships to download applications.

Applications due to County 4-H Educator January 25.

Contact your county's Purdue Extension Office to learn more.

\$136,850 AWARDED IN 2020



Diabetes Support Group

A new Diabetes Support Group has been formed. We are happy to share that the Farm Fresh Foods program participants desired to form a diabetes support group. The group will be meeting the first and third Tuesdays of each month at 10 AM at the Jennings County Library. If you or someone you know is a diabetic, please share this opportunity with them. Educational programs will be offered periodically to the group. The first program will be on November 17th, Diabetes through the Holidays.

Healthy Holiday Hacks

If you follow us on Facebook, or if you don't go to Purdue Extension Jennings County and like us, you will be able to view a series of Healthy Holiday Hacks presented on behalf of Area 1 HHS Educators. While you are there, please be sure to click on the survey - we would greatly appreciate it!

Lunch N Learn Series

Atina will be offering the following Lunch N Learn Series. Each session will be held via zoom at Noon on the date listed below. Please contact the Extension Office to sign up and receive the zoom link information.

January 19: Empower Me To Be Clutter Free

January 26: Electric Pressure Cookers

February 2: Meal Planning

February 9: Food Preservation Basics

Reading Made Fun

We just received word that we have received funding for this year's Reading Made Fun program. Atina will have details soon as to what this year's program will look like. We appreciate all the volunteers for this program. Contact the Extension Office if you would like to have a volunteer part, if needed, with this year's program. This would be in a virtual capacity.

Dining With Diabetes

Dining With Diabetes will be offered January 26, February 2, 9 and 16 at 6 PM, via zoom. Please contact the Extension Office to learn more about how to register for this program.

ServSafe

ServSafe classes are currently not being held in-person; however Atina is still proctoring exams for individuals that are needing to get the certification and taking the course online.

County Extension Director Comments

Purdue Extension is currently working to fill our Ag and Natural Resources Extension Educator position. If you know of someone that might be qualified for the position, please encourage them to apply.

Pending State approval of our budget, we will be hiring a program assistant. If you or someone you know would be interested in learning more about this position, please email Atina at arozhon@purdue.edu.

We will be holding our Annual Meeting on December 11th at noon. This will be a hybrid meeting, those wishing to participate, in person or virtually, should contact the Extension Office.

Atina Rozhon, County Extension Director

arozhon@purdue.edu

PO Box 365, 200 E Brown St., Vernon, IN 47282

812-352-3033

www.extension.purdue.edu/Jennings

Facebook Purdue Extension Jennings County

Upcoming Mental Health First Aid courses available that will be held in December:

ADULT COURSES

Dec. 1st -registration closes Nov. 17th
Dec. 10th -registration closes Nov. 24th
Dec. 15th -registration closes Dec. 1st

YOUTH COURSES

Dec. 2nd -registration closes Nov. 18th
Dec. 15 -registration closes Dec. 1st

Register for a course at <https://extension.purdue.edu/mhfa>



MENTAL HEALTH FIRST AID IS NOW AVAILABLE VIRTUALLY!



WHY MENTAL HEALTH FIRST AID?

- Mental health affects everyone.
- Like CPR, it's good to know what to do when someone is in crisis.
- You can raise awareness and reduce stigma.





DETAILS



Two Course Types Available:

- Adult
- Youth (teaches adults to help youth)



Each Course Includes:

- Self-paced online learning
- Instructor-led training over Zoom



\$20 per person*
Advance Sign-up **REQUIRED**



Some CEUs available

LEARN MORE AND SIGN UP

www.extension.purdue.edu/mhfa

QUESTIONS?

Contact
Purdue Extension: mhfa@purdue.edu

*Supported by the Substance Abuse and Mental Health Services Administration (grant number 1 H79 TI081898-01 or TI083276), as grant funds are available.
Purdue University is an equal access/equal opportunity institution.

Healthy Holidays

11.17.2020
10AM | TUESDAY
JENNINGS CO.
PUBLIC LIBRARY

LEARN TIPS TO MANAGE
YOUR HEALTH AND
STAY ON TRACK THIS
HOLIDAY SEASON
-NUTRITION-FITNESS-WELLNESS-



Extension - Jennings County

Purdue Cooperative Extension Services is an Equal Opportunity/Access institution

A collection of holiday-themed fitness items including a red sneaker, pink dumbbells, a colorful jump rope, gold pinecones, a small orange gift box, a candy cane, a snowflake ornament, and a reindeer ornament, all arranged on a dark blue wooden surface.

Simple Stay-Healthy
Tips to Survive the Holidays

November–December Update

Hi all,

I hope that you're all doing well and enjoying the remnants of Halloween (along with some healthy fall produce!). Before we end 2020, I want to share some updates with you from the work I've been doing over the last month along with some more thoughts on nutrition.

Here's what I've been up to:

1. The Farm Fresh Foods (F3) initiative was launched in August and we finished our last class of twelve on October 27th. F3 is a produce prescription program where individuals who were eligible can join to learn how to manage their Type 2 Diabetes through food choices, participants also receive vouchers to spend on produce at the Jennings County Farmers Market. Congrats to all of the participants who completed the program and thanks to our partners who made it possible!
2. In response to the pandemic, I have continued to help coordinate the donation of eggs from Jen Acre to assist with the Gleaners Mobile Pantries that have occurred monthly. I've also been working with the Jennings County School Corporation on restarting a local back sack program this year – look for more news on that in the near future.
3. I presented virtually at the Food and Nutrition Conference and Expo, which is the largest gathering dietitians in the world alongside some other Community Wellness Coordinators with Purdue Extension. The conference was originally supposed to be held in Indianapolis, but we were able to make sure it still had some Indiana flavor!

Now that the weather is getting cold and there's less daylight to work with, I encourage you to reach out to friends and family for support in staying active this winter. Many of us stayed seated and indoors more often this year due to COVID-19 and while we need to keep taking precautions, it's important to get moving! If you like to walk, make it a group activity by checking out the app Stridekick. It's free and you can use to prove to your friends that you do get the most steps in each day!

If you're interested by the work of making Jennings County a healthier place to live or know someone who is, contact our office at (812) 352-3033 or email me at walke526@purdue.edu. I am always ready to partner with people with ideas and a willingness to work, or help get them involved in what we're already doing! Now, more than ever promoting health benefits everyone in Jennings County!

Healthfully yours,

Jeff Walker



**Are you ready to learn how to eat smart
and move more on a budget?**

FREE NUTRITION EDUCATION LESSONS AVAILABLE!

**The Purdue Extension Nutrition Education Program
provides free, engaging nutrition education classes
for all ages!**

- New skills that you can use at home every day
- Planning, grocery shopping, and cooking tips
- Healthy eating and physical activity made easy
- Healthy recipes for cooking together at home

Topics include:

- MyPlate
- Fix it Safe
- Plan: Know What's for Dinner
- Fix It Fast
- Move More Throughout the Day
- Shop: Get the Best for Less
- Shop for Value, Check the Facts
- Smart Size Your Portions

...and more!

**visit eatgathergo.org/free-programs
to sign up!**



**PURDUE
UNIVERSITY®**

Extension - Nutrition
Education Program

Agriculture & Natural Resources Update

It is that time of year again and private and commercial applicator credits are due. If you are unsure about the current status of your license, please give our office or the Indiana State Chemist a call. More details about upcoming PARP events can be found at <https://ppp.purdue.edu>

See next page for more details on 2020 Virtual SEPAC Field Day!

Area 1 Agriculture & Natural Resources

2020 Virtual SEPAC Field Day

Live Webcast November 30 from 6-8:30 pm

Use this link above to register/participate or call your local extension office.

PARP/CCH Credits are available to attendees.

bit.ly/2020SEPACFieldDay



November 2020

11/10/2020 - [AREA PARP SCOTT COUNTY](#)
9:00 am EST - 11:15 am EST Scott County Fairgrounds, Saddle Club Bldg

11/10/2020 - [AREA PARP WASHINGTON COUNTY](#)
1:00 pm EST - 3:15 pm EST 4-H Building Washington County Fairgrounds

11/10/2020 - [AREA PARP CRAWFORD COUNTY](#)
6:00 pm EST - 8:15 pm EST Leavenworth Town Hall

11/10/2020 - [HARRISON COUNTY DRIVE-IN PARP](#)
6:00 pm EST - 8:15 pm EST Harrison County Fairgrounds

11/13/2020 - [OHIO COUNTY CONSERVATION PARP](#)
9:00 am EST - 11:30 am EST Rising Sun Senior Center

11/18/2020 - [HORTICULTURE CROPS -- ZOOM](#)
6:00 pm EST - 8:00 pm EST

11/30/2020 - [SEPAC VIRTUAL FIELD DAY](#)
6:00 pm EST - 8:30 pm EST SEPAC



**More Than
A Handshake**
**Building Successful & Equitable
Land Lease Agreements**

Landowners and farmers can learn more about different types of farmland leases, legal aspects of leases, and leasing trends by participating in the Purdue University Extension virtual workshop, "More Than a Handshake." Sign up at <https://www.cvent.com/d/q7qdjr>

ANR Extension Educator-Vacancy

If you know of individuals who are qualified and would be interested in a position, please share with them the [Purdue Careers website](#). The new career site for Purdue is: careers.purdue.edu. When external applicants go to this page, they'll have to click on "staff" positions and they can search by "Extension" in keywords. If anyone has questions or would like more information about the position, they are asked to contact Atina Rozhon, County Extension Director, at arozhon@purdue.edu or call the Extension Office at 812-352-3033.

Check out the following information in this newsletter on:

- **Holiday Plant Webinar**
- **More Than a Handshake: Building Successful & Equitable Land Lease Agreements**
 - **Securing Indiana's Pork Supply**
 - **2020 Virtual SEPAC Field Day**
 - **Annual Ag Outlook Program**



HOLIDAY PLANTS WEBINAR

**THURSDAY, NOVEMBER 12, 2020
11:30 AM**

JOIN RICHARD BECKORT, JACKSON CO. ANR
EDUCATOR, TO LEARN:

- *POINSETTIA CARE
- *CARE FOR OTHER HOLIDAY PLANTS
- *MANAGING LIVE & FRESH TREES
- *AND MORE!

RICHARD WILL ALSO ANSWER
ALL OF YOUR HOLIDAY PLANT
QUESTIONS!



TO JOIN THE WEBINAR OR TO RECEIVE
A LINK TO THE WEBINAR RECORDING,
REGISTER BY TUES., NOV. 10 AT:

<http://bit.ly/2020holidayplants>

PURDUE UNIVERSITY IS AN EQUAL OPPORTUNITY/EQUAL ACCESS/
AFFIRMATIVE ACTION INSTITUTION.



More Than A Handshake

Building Successful & Equitable Land Lease Agreements

Dates & Times

November 12, 2020

10:00 am - 12:00 pm EST

9:00 am - 11:00 am CST

or

November 17, 2020

6:30 pm - 8:30 pm EST

5:30 pm - 7:30 pm CST

Pick Which Works Best For You!

Cost

\$25 per household/farm

- Enhance your ability to negotiate an equitable lease.
- Understand various ways to determine rental rates.
- Develop an understanding of different types of leases.
- Discover the common pitfalls made when developing a lease agreement.

Anthony Crowell, Attorney
Gordon & Associates

Anthony Crowell will discuss the
legal side of having an effective
land lease.



Register Online Today!

<https://www.cvent.com/d/q7qdjr>

For more information, or if you need a reasonable accommodation to participate in this program, contact Jenna Nees at 765-653-8411, smith535@purdue.edu, prior to the program.

Purdue University is an equal opportunity/equal access/affirmative action institution.



**BARTHOLOMEW, JACKSON, JENNINGS COUNTIES
OFFER**

Securing Indiana's Pork Supply

How will disease outbreak and spread affect your operation?



Scan me to learn more!

**11.16.20
6:00 pm
Register today!
812-358-6101**

**THE TEAM AT BOAH WANTS TO ENSURE THAT EVERY
HOOSIER PORK PRODUCER IS AS PREPARED AS
POSSIBLE NOW, BEFORE A DISEASE EVENT HAPPENS.**

Plan to attend this information session on November 16th at 6:00 pm at the Jackson County Learning Center, 323 Dupont Dr., Seymour, IN 47274. There is no charge, but advance registration is required. Please contact rbeckort@purdue.edu or 812-358-6101. Masks required and social distancing rules will be followed.

More information about Securing Indiana's Pork Supply is online at:

www.in.gov/boah/2857.htm



**PURDUE
UNIVERSITY**

Extension



Purdue is an equal opportunity/equal access institution.



Area 1 Agriculture & Natural Resources

2020 Virtual SEPAC Field Day

Live Webcast November 30 from 6-8 pm

You are invited to join us virtually from the comfort of your home as Purdue Extension specialists discuss the following topics as part of the 2020 Virtual SEPAC Field Day! Feel free to pick and choose the live presentations you engage with as it pertains to your operation.

6:00: Tile Drainage- Eileen Kladvko & Dena Anderson

Installation, design, economics, field data, and 35-year usage summary.

6:30: Potassium Fertility- Jim Camberato & Alex Helms

7:00: Soybean Update- Shaun Casteel & Richard Smith

7:30: Crop Disease & Response to Foliar Fungicides -Darcy Telenko



bit.ly/2020SEPACFieldday

Use the link above to register/participate

Questions about how to join? Contact your local Purdue Extension Office or Call (812) 926-1189



PURDUE
UNIVERSITY®

Extension - Agriculture
and Natural Resources

Annual Ag Outlook Program

Virtual Presentation
by
Dr. Todd Kuthe
*Purdue Agricultural Economist and Agricultural Financial
Specialist.*

Tuesday, December 15, 2020

9:00 a.m.

Face-to-Face Locations Available:

- ♦ Scott County
Fairgrounds
710 Fairground Rd.
Scottsburg, IN 47171
- ♦ Washington County
Purdue Extension Office
806 Martinsburg Rd. Ste 104,
Salem, IN 47167
- ♦ Crawford County
Schwartz Restaurant,
6738 W. Governors Trace,
Eckerty, IN 47116
(Doors open at 8:30 am)



**You can also register
to watch from home!**

**RSVP required by
December 11, 2020**

**No walk-ins allowed due
to seating limits**

Ag Outlook Registration Link:
<https://tinyurl.com/yxhg5ja5>



PURDUE EXTENSION - JENNINGS COUNTY
200 EAST BROWN STREET, P.O. BOX 365
VERNON, IN 47282

U.S. Postage
PRSRT STD
PAID
Vernon, IN 47282
Permit No. 9



PURDUE EXTENSION JENNINGS COUNTY

Atina Rozhon

Health & Human Sciences
County Extension Director
arozhon@purdue.edu

Jeff Walker

Community Wellness Coordinator
walke526@purdue.edu

Melessa Wiesehan

4-H Youth Development
mwieseha@purdue.edu

Deidre Wagster

Office Manager
dwagster@purdue.edu

Office Hours: 8 AM to 4 PM Phone: 812-352-3033

It is the policy of the Purdue University Cooperative Extension Service that all persons have equal opportunity and access to its educational programs, services, activities, and facilities without regard to race, religion, color, sex, age, national origin or ancestry, marital status, parental status, sexual orientation, disability or status as a veteran.

Purdue University is an Affirmative Action institution. This material may be available in alternative formats.



1-888-EXT-INFO • www.extension.purdue.edu



Order or download materials from
Purdue Extension • The Education Store
www.the-education-store.com